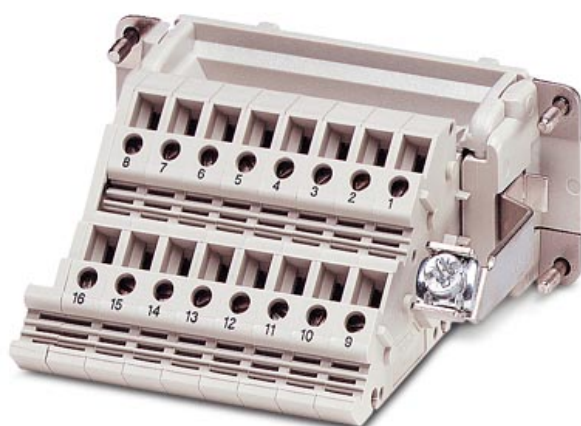


Please note that the data given here has been taken from the online catalog. For comprehensive information and data, please refer to the user documentation at <http://www.download.phoenixcontact.com>. The General Terms and Conditions of Use apply to Internet downloads.

## ▶ Extract from the online catalog



Terminal block adapter with female insert, ground connection on right of terminal block, no. of positions 24, dimensions A 111 mm, B 104 mm, C 85.7 mm

The illustration shows version HC-KA-B 16-BU/PER

Order No.	1772955
Ord designation	HC-KA-B 24-BU/PER
EAN	4017918037567
Pack	5 Pcs.
Customs tariff	85369010
Catalog page information	Page 186 (PC-2005)

## ▶ Product notes

WEEE/RoHS-compliant since: 12/01/2005



## ▶ Technical data

**Electrical characteristics**

Rated surge voltage	4 kV
Number of positions	24
Connection in acc. with standard	IEC/ DIN VDE
Nominal voltage $U_N$	400 V
Nominal current $I_N$	16 A
Conductor cross section flexible min.	0.2 mm <sup>2</sup>
Conductor cross section, flexible max.	2.5 mm <sup>2</sup>
Conductor cross section, rigid min.	0.2 mm <sup>2</sup>
Conductor cross section, rigid max.	4 mm <sup>2</sup>
Insulating material group	I
Conductor cross section AWG/kcmil min.	24
Conductor cross section AWG/kcmil max	12

**Mechanical characteristics**

Screw thread	M 2,5
--------------	-------

**General characteristics**

Insulation material, contact inserts	PC
Drill hole distance, horizontal	104 mm
Housing width	111 mm
Terminal adapter width	85.7 mm
Contamination class	2
Surge voltage category	II
Connection in acc. with standard	IEC/ DIN VDE

► **Certificates**

**Certificate logos**



**CSA**

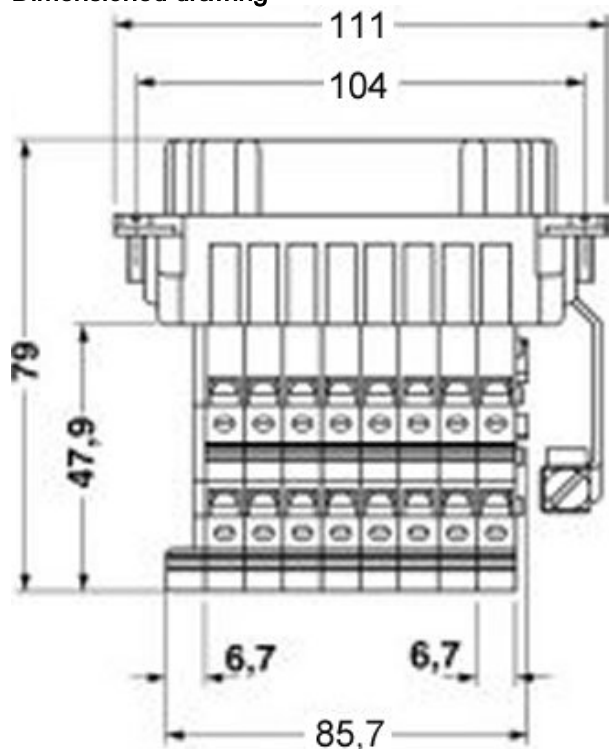
Nominal voltage $U_N$	300 V
Nominal current $I_N$	9 A
AWG/kcmil	22-12

**UL**

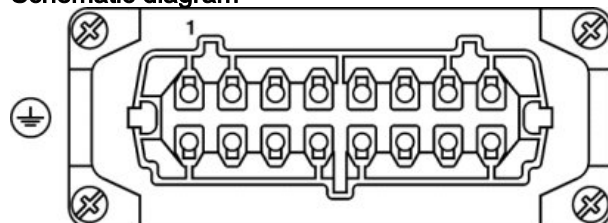
Nominal voltage $U_N$	600 V
Nominal current $I_N$	10 A
AWG/kcmil	22-12

► Drawings

Dimensioned drawing



Schematic diagram



---

## ► Accessories

---

Item	Designation	Description
<b>Assembly</b>		
1775240	HC-KA-FE	Foot element, for mounting on mounting rail NS 32, mounting rail NS 35/7.5 or mounting rail NS 35/15, can be inserted between basic and side element
1660083	HC-VSH	Locking screw barrel to firmly connect contact inserts and rail-mountable terminal adapters

---

---

## ► Address

---

PHOENIX CONTACT GmbH & Co. KG  
Flachsmarktstr. 8  
32825 Blomberg  
Germany  
Phone +49 5235 3 00  
Fax +49 5235 3 41200  
<http://www.phoenixcontact.com>  
Phoenix Contact  
Technical modifications reserved;