

FEATURES AND SPECIFICATIONS

Features and Benefits

- Snap-in peg locks header to PCB for optimum retention
- Fully polarized to mating receptacle
- Surface Mount Compatible

Reference Information

Product Specification: PS-43650
 Packaging: Tray
 UL File No.: E29179
 CSA File No.: LR19980
 TUV License No.: R95107
 Mates With: **43645**
 Designed In: Millimeters

Electrical

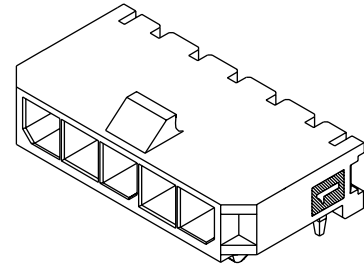
Voltage: 250V
 Current: 5.0A max.
 Contact Resistance: 10mΩ max.
 Dielectric Withstanding Voltage: 1500V AC
 Insulation Resistance: 1000 MΩ min.

Physical

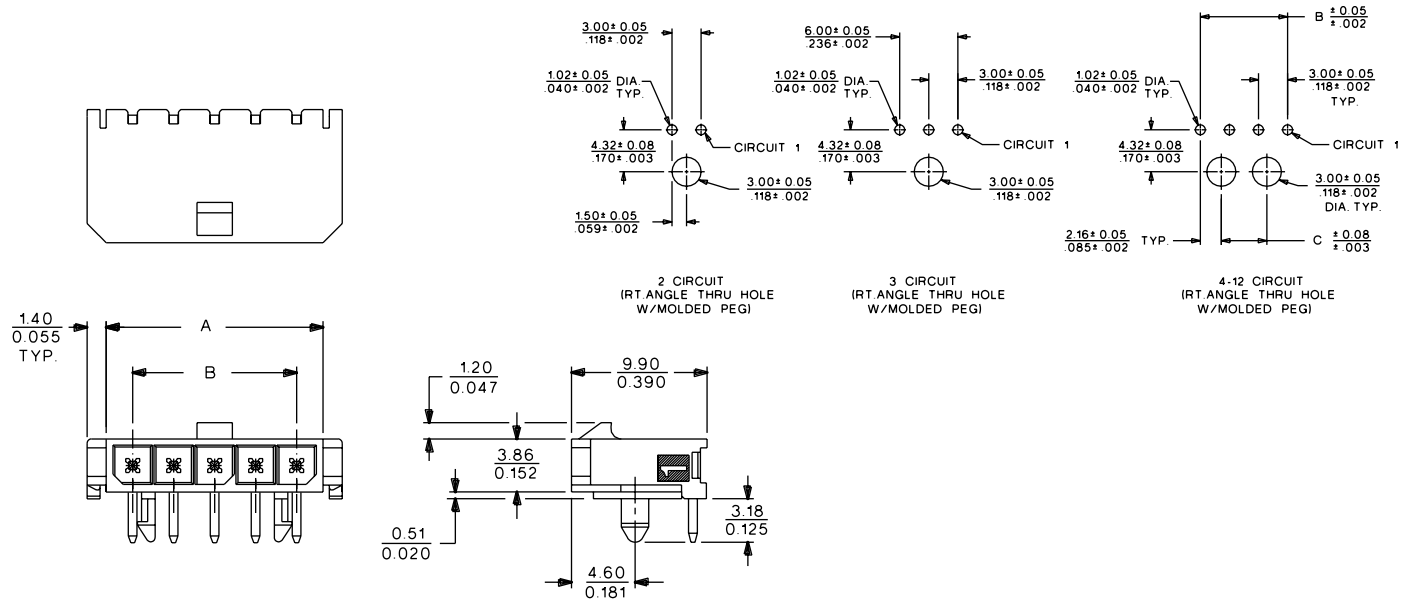
Housing: High temperature LCP, UL 94V-0
 Contact: Brass
 Plating: Tin or Gold

**molex® 3.00mm (.118") Pitch
 Micro-Fit 3.0™
 Wire-to-Board
 Header**

**43650
 Single Row
 Right Angle**



CATALOG DRAWING (FOR REFERENCE ONLY)



ORDERING INFORMATION AND DIMENSIONS

Circuits	Order No.			Dimension		
	Tin	15µ" Gold	30µ" Gold	A	B	C
2	43650-0200	43650-0201	43650-0202	6.85 (.270)	3.00 (.118)	
3	43650-0300	43650-0301	43650-0302	9.85 (.388)	6.00 (.236)	
4	43650-0400	43650-0401	43650-0402	12.85 (.506)	9.00 (.354)	4.70 (.185)
5	43650-0500	43650-0501	43650-0502	15.85 (.624)	12.00 (.472)	7.70 (.303)
6	43650-0600	43650-0601	43650-0602	18.85 (.742)	15.00 (.591)	10.70 (.421)
7	43650-0700	43650-0701	43650-0702	21.85 (.860)	18.00 (.709)	13.70 (.539)
8	43650-0800	43650-0801	43650-0802	24.85 (.978)	21.00 (.827)	16.70 (.657)
9	43650-0900	43650-0901	43650-0902	27.85 (1.096)	24.00 (.945)	19.70 (.775)
10	43650-1000	43650-1001	43650-1002	30.85 (1.215)	27.00 (1.063)	22.70 (.893)
11	43650-1100	43650-1101	43650-1102	33.85 (1.333)	30.00 (1.181)	25.70 (1.011)
12	43650-1200	43650-1201	43650-1202	36.85 (1.451)	33.00 (1.299)	28.70 (1.129)