

Switch Language

English

Need Assistance?

- Contact Us
- Find a Distributor
- Order Samples
- Tech Library

Printer-friendly page

Email this page

[Home](#) [PCB Headers](#) [Datasheet](#)

Part Number: 0022032021

Status: Active

Description: 2.54mm (.100") Pitch KK® Wire-to-Board Header, Single Row, Vertical, 2 Circuits, PA Polyamide Nylon, Tin (Sn) Plating

Documents:

Note - Please disable browser pop-up blockers for documents on www.molex.com

- [Drawing \(PDF\)](#)
- [Product Specification PS-10-07 \(PDF\)](#)
- [3D Model](#)
- [Packaging Specification \(PDF\)](#)
- [Related Catalog Page \(PDF\)](#)

Order Products:

- [Check Distributor Inventory](#)
- [Add to My Parts](#)
- [Request Samples](#)

Part Detail: (show all)

[General](#) [Physical](#) [Electrical](#) [Material Info](#)

General

Product Family	PCB Headers
Series	<u>4030</u>
Application	Board-to-Board
Application	Wire-to-Board
Product Name	KK®

Physical

Breakaway	No
Circuits (Loaded)	2
Circuits (maximum)	2
Color - Resin	Natural (White)
Durability (mating cycles) min	25 cycles
Flammability	94V-0
Lock to Mating Part	None
Material - Metal	Brass
Material - Plating Mating	Tin
Material - Plating Termination	Tin
Material - Resin	Nylon
Number of Rows	1
Orientation	Vertical
PC Tail Length (in)	0.135 In
PC Tail Length (mm)	3.43 mm
PCB Locator	No
PCB Retention	None
PCB Thickness Recommended (in)	0.062 In
PCB Thickness Recommended (mm)	1.60 mm
Packaging Type	Bag
Pitch - Mating Interface (in)	0.100 In
Pitch - Mating Interface (mm)	2.54 mm
Plating min: Mating (uin)	200
Plating min: Mating (um)	5
Plating min: Termination (uin)	200
Plating min: Termination (um)	5
Polarized to Mating Part	No



EU RoHS

ELV and RoHS Compliant

China RoHS



Need more information on product compliance?

Email productcompliance@molex.com

Please visit the [Contact Us](#) section for any non-product compliance questions.

Duration at Max. Process Temperature (seconds)	5
Lead-free Process Capability	Wave Capable (TH only)
Max. Cycles at Max. Process Temperature	1
Process Temperature max. C	235

Search Parts in this Series

[4030](#) Series

Mates With

[2695](#), [6471](#), [7880](#), [4455](#), [7720](#)

Polarized to PCB	No
Shrouded	No
Stackable	Yes
Surface Mount Compatible (SMC)	No
Temperature Range - Operating	0°C to +75°C
Termination Interface: Style	Through Hole

Electrical

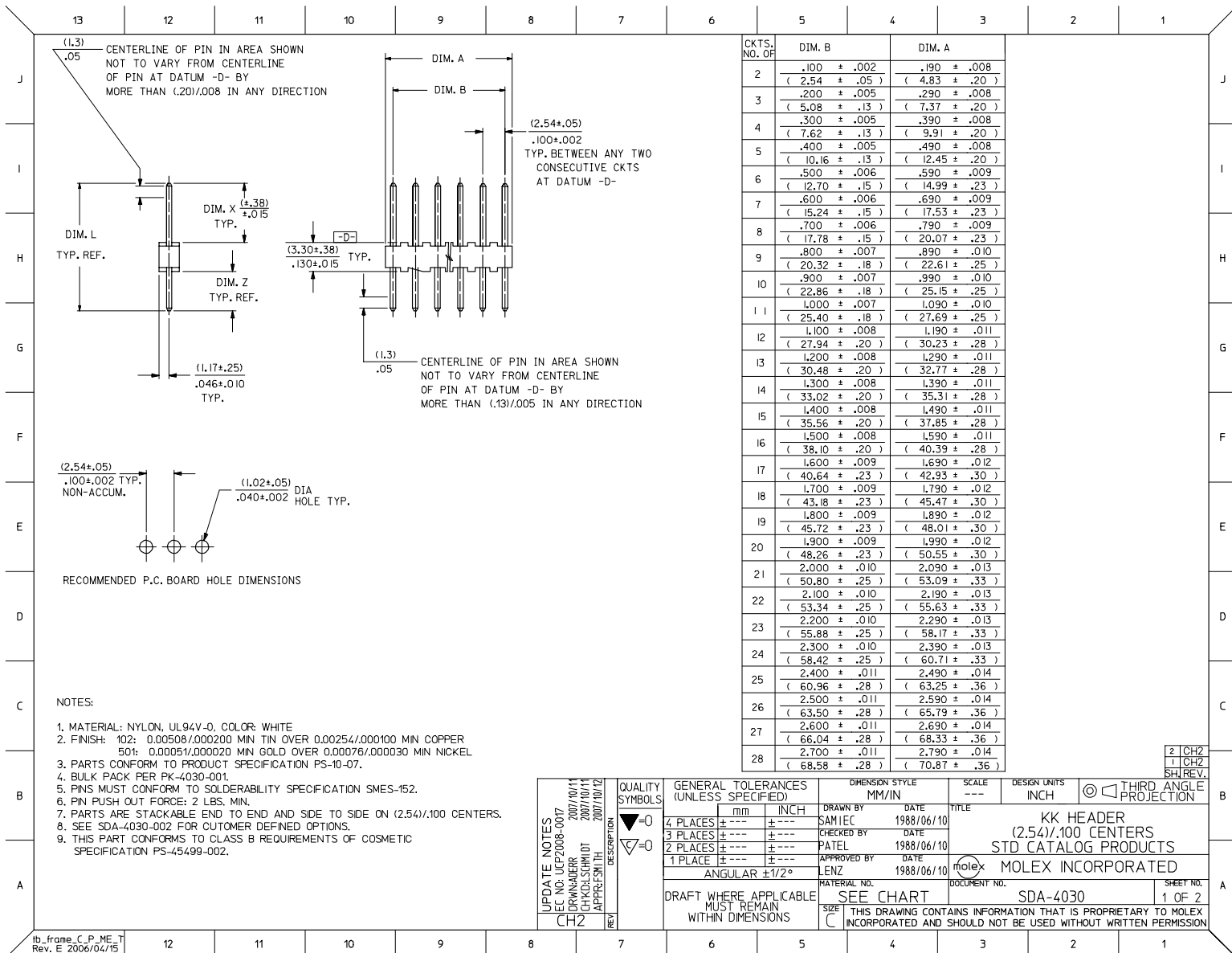
CSA	LR19980
Current - Maximum	4.000 Amp
UL	E29179
Voltage - Maximum	250V

Material Info

Old Part Number	A-4030-02A102
-----------------	---------------

Reference - Drawing Numbers

Product Specification	PS-10-07
Sales Drawing	SDA-4030



CKTS. NO. OF	DIM. B	DIM. A
2	.100 ± .002 (2.54 ± .05)	.190 ± .008 (4.83 ± .20)
3	.200 ± .005 (5.08 ± .13)	.290 ± .008 (7.37 ± .20)
4	.300 ± .005 (7.62 ± .13)	.390 ± .008 (9.91 ± .20)
5	.400 ± .005 (10.16 ± .13)	.490 ± .008 (12.45 ± .20)
6	.500 ± .006 (12.70 ± .15)	.590 ± .009 (14.99 ± .23)
7	.600 ± .006 (15.24 ± .15)	.690 ± .009 (17.53 ± .23)
8	.700 ± .006 (17.78 ± .15)	.790 ± .009 (20.07 ± .23)
9	.800 ± .007 (20.32 ± .18)	.890 ± .010 (22.61 ± .25)
10	.900 ± .007 (22.86 ± .18)	.990 ± .010 (25.15 ± .25)
11	1.000 ± .007 (25.40 ± .18)	1.090 ± .010 (27.69 ± .25)
12	1.100 ± .008 (27.94 ± .20)	1.190 ± .011 (30.23 ± .28)
13	1.200 ± .008 (30.48 ± .20)	1.290 ± .011 (32.77 ± .28)
14	1.300 ± .008 (33.02 ± .20)	1.390 ± .011 (35.31 ± .28)
15	1.400 ± .008 (35.56 ± .20)	1.490 ± .011 (37.85 ± .28)
16	1.500 ± .008 (38.10 ± .20)	1.590 ± .011 (40.39 ± .28)
17	1.600 ± .009 (40.64 ± .23)	1.690 ± .012 (42.93 ± .30)
18	1.700 ± .009 (43.18 ± .23)	1.790 ± .012 (45.47 ± .30)
19	1.800 ± .009 (45.72 ± .23)	1.890 ± .012 (48.01 ± .30)
20	1.900 ± .009 (48.26 ± .23)	1.990 ± .012 (50.55 ± .30)
21	2.000 ± .010 (50.80 ± .25)	2.090 ± .013 (53.09 ± .33)
22	2.100 ± .010 (53.34 ± .25)	2.190 ± .013 (55.63 ± .33)
23	2.200 ± .010 (55.88 ± .25)	2.290 ± .013 (58.17 ± .33)
24	2.300 ± .010 (58.42 ± .25)	2.390 ± .013 (60.71 ± .33)
25	2.400 ± .011 (60.96 ± .28)	2.490 ± .014 (63.25 ± .36)
26	2.500 ± .011 (63.50 ± .28)	2.590 ± .014 (65.79 ± .36)
27	2.600 ± .011 (66.04 ± .28)	2.690 ± .014 (68.33 ± .36)
28	2.700 ± .011 (68.58 ± .28)	2.790 ± .014 (70.87 ± .36)

UPDATE NOTES DEC NO: UCP2008-0017 DRAWN BY: ZORWADER 2007/10/11 CHECKED BY: CHACKSCHMIDT 2007/10/11 APPROVED BY: JEFFREY SMITH 2007/10/11	QUALITY SYMBOLS ◻=0 ◻=0	GENERAL TOLERANCES (UNLESS SPECIFIED) <table border="1"> <tr><th></th><th>mm</th><th>INCH</th></tr> <tr><td>4 PLACES</td><td>± .005</td><td>± .0005</td></tr> <tr><td>3 PLACES</td><td>± .004</td><td>± .0004</td></tr> <tr><td>2 PLACES</td><td>± .003</td><td>± .0003</td></tr> <tr><td>1 PLACE</td><td>± .002</td><td>± .0002</td></tr> </table>		mm	INCH	4 PLACES	± .005	± .0005	3 PLACES	± .004	± .0004	2 PLACES	± .003	± .0003	1 PLACE	± .002	± .0002	DIMENSION STYLE MM/IN	SCALE ---	DESIGN UNITS INCH	<input checked="" type="checkbox"/> THIRD ANGLE PROJECTION
				mm	INCH																
4 PLACES	± .005	± .0005																			
3 PLACES	± .004	± .0004																			
2 PLACES	± .003	± .0003																			
1 PLACE	± .002	± .0002																			
DRAFT WHERE APPLICABLE MUST REMAIN WITHIN DIMENSIONS	DRAWN BY SAM IEC DATE 1988/06/10	CHECKED BY PATEL DATE 1988/06/10	APPROVED BY LENZ DATE 1988/06/10	TITLE KK HEADER (2.54)/.100 CENTERS STD CATALOG PRODUCTS	MOLEX MOLEX INCORPORATED	SHEET NO. 1 OF 2															

	13	12	11	10	9	8	7	6	5	4	3	2	1	
	ENG. NO.	PIN NO.	DIM. L	DIM. X	DIM. Z	PACKAGE PER	EDP NO. IN COL NO							
J	A-4030 -NA(102)	2766 -I(102)	.560 (14.22)	.295 (7.49)	.135 (3.43)	PK-4030-001 BULK	1							J
	A-4030 -NA(50I)	2766 -I(50I)	.560 (14.22)	.295 (7.49)	.135 (3.43)	PK-4030-001 BULK	2							
	A- -	-	()	()	()									
I	A- -	-	()	()	()									I
	A- -	-	()	()	()									
	A- -	-	()	()	()									
H														H
G														G
	COLUMN NO. 1			COLUMN NO. 2										
	EDP NO.	ENG. NO.	NO OF DCTS	EDP NO.	ENG. NO.	NO OF DCTS								
	22-03-202I	A-4030-02A(102)	2	22-10-202I	A-4030-02A(50I)	2								
	22-03-203I	A-4030-03A(102)	3	22-10-203I	A-4030-03A(50I)	3								
F	22-03-204I	A-4030-04A(102)	4	22-10-204I	A-4030-04A(50I)	4								F
	22-03-205I	A-4030-05A(102)	5	22-10-205I	A-4030-05A(50I)	5								
	22-03-206I	A-4030-06A(102)	6	22-10-206I	A-4030-06A(50I)	6								
	22-03-207I	A-4030-07A(102)	7	22-10-207I	A-4030-07A(50I)	7								
	22-03-208I	A-4030-08A(102)	8	22-10-208I	A-4030-08A(50I)	8								
	22-03-209I	A-4030-09A(102)	9	22-10-209I	A-4030-09A(50I)	9								
E	22-03-210I	A-4030-10A(102)	10	22-10-210I	A-4030-10A(50I)	10								E
	22-03-211I	A-4030-11A(102)	11	22-10-211I	A-4030-11A(50I)	11								
	22-03-212I	A-4030-12A(102)	12	22-10-212I	A-4030-12A(50I)	12								
	22-03-213I	A-4030-13A(102)	13	22-10-213I	A-4030-13A(50I)	13								
	22-03-214I	A-4030-14A(102)	14	22-10-214I	A-4030-14A(50I)	14								
	22-03-215I	A-4030-15A(102)	15	22-10-215I	A-4030-15A(50I)	15								
D	22-03-216I	A-4030-16A(102)	16	22-10-216I	A-4030-16A(50I)	16								D
	22-03-217I	A-4030-17A(102)	17	22-10-217I	A-4030-17A(50I)	17								
	22-03-218I	A-4030-18A(102)	18	22-10-218I	A-4030-18A(50I)	18								
	22-03-219I	A-4030-19A(102)	19	22-10-219I	A-4030-19A(50I)	19								
	22-03-220I	A-4030-20A(102)	20	22-10-220I	A-4030-20A(50I)	20								
	22-03-221I	A-4030-21A(102)	21	22-10-221I	A-4030-21A(50I)	21								
	22-03-222I	A-4030-22A(102)	22	22-10-222I	A-4030-22A(50I)	22								
C	22-03-223I	A-4030-23A(102)	23	22-10-223I	A-4030-23A(50I)	23								C
	22-03-224I	A-4030-24A(102)	24	22-10-224I	A-4030-24A(50I)	24								
	22-03-225I	A-4030-25A(102)	25	22-10-225I	A-4030-25A(50I)	25								
	22-03-226I	A-4030-26A(102)	26	22-10-226I	A-4030-26A(50I)	26								
	22-03-227I	A-4030-27A(102)	27	22-10-227I	A-4030-27A(50I)	27								
	22-03-228I	A-4030-28A(102)	28	22-10-228I	A-4030-28A(50I)	28								
B														B
A														A
	ib_frame_C_P_ME_T Rev. E 2006/04/15	12	11	10	9	8	7	6	5	4	3	2	1	

UPDATE TITLE BLOCK REC NO: UCP2008-0017 DRAWN BY: 2007/10/11 CHECKED BY: 2007/10/11 APPR: FSW/TH 2007/10/11 REV	QUALITY SYMBOLS	GENERAL TOLERANCES (UNLESS SPECIFIED)	DIMENSION STYLE IN/MM	SCALE --- INCH	DESIGN UNITS INCH	THIRD ANGLE PROJECTION	
	▽=0	4 PLACES ±--- ±--- 3 PLACES ±--- ±--- 2 PLACES ±--- ±--- 1 PLACE ±--- ±---	mm INCH	DRAWN BY DATE SAM IEC 1993/07/15	TITLE KK HEADER (2.54)/.100 CENTERS STD CATALOG PRODUCTS		
	▽=0	ANGULAR ±1/2°	CHECKED BY DATE PATEL 1993/07/15	APPROVED BY DATE LENZ 1993/07/15			
		DRAFT WHERE APPLICABLE MUST REMAIN WITHIN DIMENSIONS	MATERIAL NO. SEE CHART	DOCUMENT NO. SDA-4030	SHEET NO. 2 OF 2		

THIS DRAWING CONTAINS INFORMATION THAT IS PROPRIETARY TO MOLEX INCORPORATED AND SHOULD NOT BE USED WITHOUT WRITTEN PERMISSION