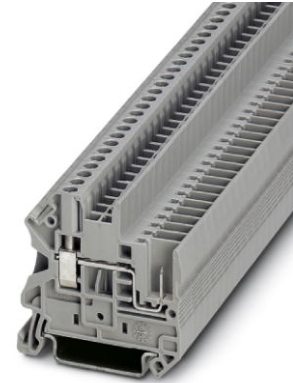


UT 2,5/1P

Order No.: 3045017

<http://eshop.phoenixcontact.de/phoenix/treeViewClick.do?UID=3045017>

Pluggable screw terminal for mounting on NS 35

Commercial data

| | |
|--------------------------|--------------------|
| EAN | 4017918975357 |
| Pack | 50 Pcs. |
| Customs tariff | 85369010 |
| Weight/Piece | 0.007544 KG |
| Catalog page information | Page 198 (CL-2007) |

Product notesWEEE/RoHS-compliant since:
01/01/2003

<http://www.download.phoenixcontact.com>
Please note that the data given here has been taken from the online catalog. For comprehensive information and data, please refer to the user documentation. The General Terms and Conditions of Use apply to Internet downloads.

Technical data**General**

| | |
|------------------------------------|------|
| Number of levels | 1 |
| Number of connections | 2 |
| Color | gray |
| Insulating material | PA |
| Inflammability class acc. to UL 94 | V0 |

Dimensions

| | |
|------------------|---------|
| Width | 5.2 mm |
| Length | 47.6 mm |
| Height NS 35/7,5 | 47.5 mm |
| Height NS 35/15 | 55 mm |

Technical data

| | |
|----------------------------------|------------|
| Maximum load current | 24 A |
| Rated surge voltage | 6 kV |
| Pollution degree | 3 |
| Surge voltage category | III |
| Insulating material group | I |
| Connection in acc. with standard | IEC 61 984 |
| Nominal voltage U_N | 500 V |
| Open side panel | ja |

Connection data

| | |
|--|----------------------|
| Conductor cross section solid min. | 0.14 mm ² |
| Conductor cross section solid max. | 4 mm ² |
| Conductor cross section stranded min. | 0.14 mm ² |
| Conductor cross section stranded max. | 4 mm ² |
| Conductor cross section AWG/kcmil min. | 26 |
| Conductor cross section AWG/kcmil max | 12 |
| Conductor cross section stranded, with ferrule without plastic sleeve min. | 0.25 mm ² |
| Conductor cross section stranded, with ferrule without plastic sleeve max. | 2.5 mm ² |
| Conductor cross section stranded, with ferrule with plastic sleeve min. | 0.25 mm ² |
| Conductor cross section stranded, with ferrule with plastic sleeve max. | 2.5 mm ² |
| 2 conductors with same cross section, solid min. | 0.14 mm ² |
| 2 conductors with same cross section, solid max. | 1.5 mm ² |
| 2 conductors with same cross section, stranded min. | 0.14 mm ² |
| 2 conductors with same cross section, stranded max. | 1.5 mm ² |

| | |
|---|-------------------------------|
| 2 conductors with same cross section, stranded, TWIN ferrules with plastic sleeve, min. | 0.5 mm ² |
| 2 conductors with same cross section, stranded, TWIN ferrules with plastic sleeve, max. | 1.5 mm ² |
| 2 conductors with same cross section, stranded, ferrules without plastic sleeve, min. | 0.25 mm ² |
| 2 conductors with same cross section, stranded, ferrules without plastic sleeve, max. | 1.5 mm ² |
| Type of connection | Special and hybrid connection |
| Stripping length | 9 mm |
| Internal cylindrical gage | A3 |
| Screw thread | M3 |
| Tightening torque, min | 0.6 Nm |
| Tightening torque max | 0.8 Nm |

Certificates / Approvals

Approval logo



CSA

| | |
|--------------------------------|-------|
| Nominal voltage U _N | 300 V |
| Nominal current I _N | 20 A |
| AWG/kcmil | 26-12 |

CUL

| | |
|--------------------------------|-------|
| Nominal voltage U _N | 300 V |
| Nominal current I _N | 20 A |
| AWG/kcmil | 26-12 |

UL

| | |
|--------------------------------|--------------|
| Nominal voltage U _N | 300 V |
| Nominal current I _N | 20 A |
| AWG/kcmil | 26-12 |
| Certification | CSA, CUL, UL |

Accessories

| Item | Designation | Description |
|-----------------|-----------------------------|---|
| Assembly | | |
| 3047167 | ATP-UT | Partition plate, for visual and electrical separation of terminal groups, width: 2 mm, color: gray |
| 3047154 | D-UT 2,5/1P | Cover, width: 2.2 mm, color: gray |
| 0801762 | NS 35/ 7,5 CU UNPERF 2000MM | DIN rail, material: Copper, unperforated, height 7.5 mm, width 35 mm, length: 2 m |
| 1207640 | NS 35/ 7,5 PERF 755MM | NS 35 DIN rail, height 7.5 mm, length 755 mm |
| 1207653 | NS 35/ 7,5 PERF 955MM | NS35 DIN rail, height 7.5 mm, length 955 mm |
| 1207666 | NS 35/ 7,5 PERF 1155MM | NS 35 DIN rail, height 7.5 mm, length 1155 mm |
| 0801733 | NS 35/ 7,5 PERF 2000MM | DIN rail, material: Steel, perforated, height 7.5 mm, width 35 mm, length: 2 m |
| 0801681 | NS 35/ 7,5 UNPERF 2000MM | DIN rail, material: Steel, unperforated, height 7.5 mm, width 35 mm, length: 2 m |
| 1201756 | NS 35/15 AL UNPERF 2000MM | DIN rail, deep-drawn, high profile, unperforated, 1.5 mm thick, material: Aluminum, height 15 mm, width 35 mm, length 2 m |
| 1201895 | NS 35/15 CU UNPERF 2000MM | DIN rail, material: Copper, unperforated, 1.5 mm thick, height 15 mm, width 35 mm, length: 2 m |
| 1207679 | NS 35/15 PERF 755MM | NS 35 DIN rail, height 15 mm, length 755 mm |
| 1207682 | NS 35/15 PERF 955MM | NS 35 DIN rail, height 15 mm, length 955 mm |
| 1207695 | NS 35/15 PERF 1155MM | NS 35 DIN rail, height 15 mm, length 1155 mm |
| 1201730 | NS 35/15 PERF 2000MM | DIN rail, material: Steel, perforated, height 15 mm, width 35 mm, length: 2 m |
| 1201714 | NS 35/15 UNPERF 2000MM | DIN rail, material: Steel, unperforated, height 15 mm, width 35 mm, length: 2 m |
| 1201798 | NS 35/15-2,3 UNPERF 2000MM | DIN rail, material: Steel, unperforated, 2.3 mm thick, height 15 mm, width 35 mm, length: 2 m |
| Bridges | | |
| 3030161 | FBS 2-5 | Plug-in bridge for cross-connections in the terminal center, 2-pos., color: Red |
| 3030174 | FBS 3-5 | Plug-in bridge for cross-connections in the terminal center, 3-pos., color: Red |
| 3030187 | FBS 4-5 | Plug-in bridge for cross-connections in the terminal center, 4-pos., color: Red |
| 3030190 | FBS 5-5 | Plug-in bridge for cross-connections in the terminal center, 5-pos., color: Red |
| 3030213 | FBS 10-5 | Plug-in bridge for cross-connections in the terminal center, 10-pos., color: Red |

| | | |
|---------|------------------|--|
| 3030226 | FBS 20-5 | Plug-in bridge for cross-connections in the terminal center, 20-pos., color: Red |
| 3038930 | FBS 50-5 | Plug-in bridge for cross-connections in the terminal center, 50-pos., color: Red |
| 3047060 | RB UT 10-(2,5/4) | Reducing bridge, for connection from UT 10 to UT 4 or UT 2,5 |

General

| | | |
|---------|--------------|--|
| 3022276 | CLIPFIX 35-5 | Snap-on end bracket, for NS 35/7.5 or NS 35/15 DIN rail, can be fitted with Zack strip ZB 5 and ZBF 5, terminal strip marker KLM 2 and KLM, parking facility for FBS...5, FBS...6, KSS 5, KSS 6, width: 5,15 mm, color: gray |
|---------|--------------|--|

Marking

| | | |
|---------|------------------------|--|
| 3040588 | PC | Coding for all basic terminal blocks |
| 0811228 | X-PEN 0,35 | Marker pen without ink cartridge, for manual labeling of markers, labeling extremely wipe-proof, line thickness 0.35 mm |
| 1050017 | ZB 5,LGS:FORTL.ZAHLEN | Zack strip, 10-section, printed horizontally: with the numbers, 1-10, 11-20 etc. up to 991-1000, color: white |
| 5060906 | ZB 5/WH-100:UNBEDRUCKT | Zack strip, unprinted: 10-section, for individual labeling with M-PEN, ZB-T or CMS system, large batch, sufficient for labeling 1000 terminal blocks, for a terminal width of 5.2 mm, color: White |
| 1050295 | ZB 5:SO/CMS | Zack strip, 10-section, divisible, special printing, marking according to customer requirements |

Plug/Adapter

| | | |
|---------|-----------|--|
| 0201689 | MPS-IH BU | Insulating sleeve (blue), for MPS metal part to be ordered separately (0201744) |
| 0201676 | MPS-IH RD | Insulating sleeve (red), for MPS metal part to be ordered separately (0201744) |
| 0201663 | MPS-IH WH | Insulating sleeve (white), for MPS metal part to be ordered separately (0201744) |
| 0201744 | MPS-MT | Test plug, consisting of: Metal part for 2.3 mm diameter socket hole |
| 3030925 | PAI-4 | Test adapter, for 4 mm diameter test plug PS and safety test plug, makes contact in the bridge shaft |
| 3030983 | PS-5 | Modular test plug, for individual assembly of test plug strips, for UT, ST, DT and QT terminal blocks, can be labeled with ZBF 5, color: Red |

Tools

| | | |
|---------|-------------|--|
| 1205053 | SZS 0,6X3,5 | Screwdriver, bladed, matches all screw terminal blocks up to 4.0 mm ² connection cross section, blade: 0.6 x 3.5 mm, without VDE approval |
|---------|-------------|--|

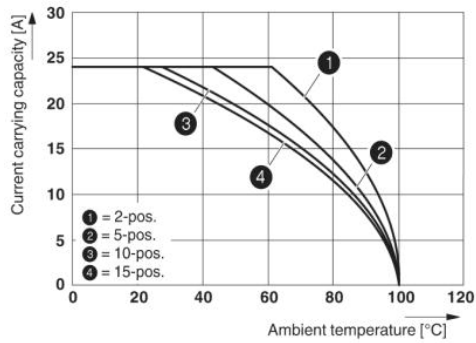
Additional products

| Item | Designation | Description |
|---------------------|-----------------|------------------------------------|
| Plug/Adapter | | |
| 3040258 | SP 2,5/ 1 | ST-COMBI connector, not bridgeable |
| 3040698 | SP 2,5/ 1 BU | ST-COMBI connector, not bridgeable |
| 3040708 | SP 2,5/ 1 GNYE | ST-COMBI connector, not bridgeable |
| 3040261 | SP 2,5/ 2 | ST-COMBI connector, not bridgeable |
| 3040274 | SP 2,5/ 3 | ST-COMBI connector, not bridgeable |
| 3040287 | SP 2,5/ 4 | ST-COMBI connector, not bridgeable |
| 3040290 | SP 2,5/ 5 | ST-COMBI connector, not bridgeable |
| 3040300 | SP 2,5/ 6 | ST-COMBI connector, not bridgeable |
| 3040313 | SP 2,5/ 7 | ST-COMBI connector, not bridgeable |
| 3040326 | SP 2,5/ 8 | ST-COMBI connector, not bridgeable |
| 3040339 | SP 2,5/ 9 | ST-COMBI connector, not bridgeable |
| 3040342 | SP 2,5/10 | ST-COMBI connector, not bridgeable |
| 3040355 | SP 2,5/11 | ST-COMBI connector, not bridgeable |
| 3040368 | SP 2,5/12 | ST-COMBI connector, not bridgeable |
| 3040371 | SP 2,5/13 | ST-COMBI connector, not bridgeable |
| 3040384 | SP 2,5/14 | ST-COMBI connector, not bridgeable |
| 3040397 | SP 2,5/15 | ST-COMBI connector, not bridgeable |
| 3040106 | SPB 2,5/ 1 | ST-COMBI connector, bridgeable |
| 3040724 | SPB 2,5/ 1 BU | ST-COMBI connector, bridgeable |
| 3040711 | SPB 2,5/ 1 GNYE | ST-COMBI connector, bridgeable |
| 3040119 | SPB 2,5/ 2 | ST-COMBI connector, bridgeable |
| 3040122 | SPB 2,5/ 3 | ST-COMBI connector, bridgeable |
| 3040135 | SPB 2,5/ 4 | ST-COMBI connector, bridgeable |
| 3040143 | SPB 2,5/ 5 | ST-COMBI connector, bridgeable |
| 3040151 | SPB 2,5/ 6 | ST-COMBI connector, bridgeable |
| 3040164 | SPB 2,5/ 7 | ST-COMBI connector, bridgeable |
| 3040177 | SPB 2,5/ 8 | ST-COMBI connector, bridgeable |
| 3040180 | SPB 2,5/ 9 | ST-COMBI connector, bridgeable |
| 3040193 | SPB 2,5/10 | ST-COMBI connector, bridgeable |
| 3040203 | SPB 2,5/11 | ST-COMBI connector, bridgeable |
| 3040216 | SPB 2,5/12 | ST-COMBI connector, bridgeable |

| | | |
|---------|------------|--------------------------------|
| 3040229 | SPB 2,5/13 | ST-COMBI connector, bridgeable |
| 3040232 | SPB 2,5/14 | ST-COMBI connector, bridgeable |
| 3040245 | SPB 2,5/15 | ST-COMBI connector, bridgeable |

Drawings

Diagram



The figure shows the derating curve of the UT 2,5/1P... terminal block in connection with the UPBV 2,5 connector

Dimensioned drawing

