

Switch Language

English

Need Assistance?

- Contact Us
- Find a Distributor
- Order Samples
- Tech Library

Printer-friendly page

Email this page

[Home](#) [Crimp Housings](#) [Datasheet](#)

Part Number: 0430200201

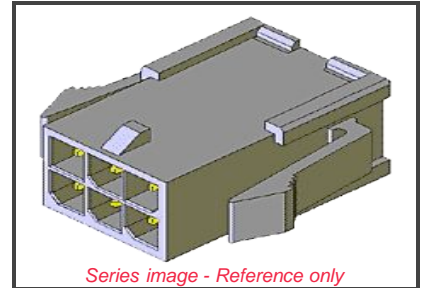
Status: Active **Overview:** [Micro-Fit, 3.0™](#)

Description: 3.00mm (.118") Pitch Micro-Fit 3.0™ Plug Housing, Dual Row, without Panel Mount Ears, 2 Circuits

Documents:

Note - Please disable browser pop-up blockers for documents on www.molex.com

- [Drawing \(PDF\)](#) [Product Specification PS-43045 \(PDF\)](#)
- [3D Model](#) [Product Literature \(PDF\)](#)
- [Related Catalog Page \(PDF\)](#)



Order Products:

- [Check Distributor Inventory](#) [Add to My Parts](#)
- [Request Samples](#)

Part Detail: (show all)

[General](#) [Physical](#) [Electrical](#) [Material Info](#)

General

Product Family	Crimp Housings
Series	43020
Overview	Micro-Fit, 3.0™
Product Name	Micro-Fit 3.0™

Physical

Circuits (maximum)	2
Circuits Detail	2
Color - Resin	Black
Flammability	94V-0
Gender	Male
Lock to Mating Part	Yes
Material - Resin	Polyester
Number of Rows	2
Packaging Type	Bag
Panel Mount	No
Pitch - Mating Interface (in)	0.118 In
Pitch - Mating Interface (mm)	3.00 mm
Pitch - Term. Interface (in)	0.118 In
Pitch - Term. Interface (mm)	3.00 mm
Polarized to Mating Part	Yes
Stackable	No
Temperature Range - Operating	-40°C to +105°C

Electrical

CSA	LR19980
TUV	R9650433
UL	E29179

Material Info

Reference - Drawing Numbers

Product Specification	PS-43045
-----------------------	----------

EU RoHS
ELV and RoHS Compliant

China RoHS



Need more information on product compliance?

Email productcompliance@molex.com

Please visit the [Contact Us](#) section for any non-product compliance questions.

Search Parts in this Series

[43020](#) Series

Mates With

[43025](#) Micro-Fit 3.0™ Receptacle Housing

Use With

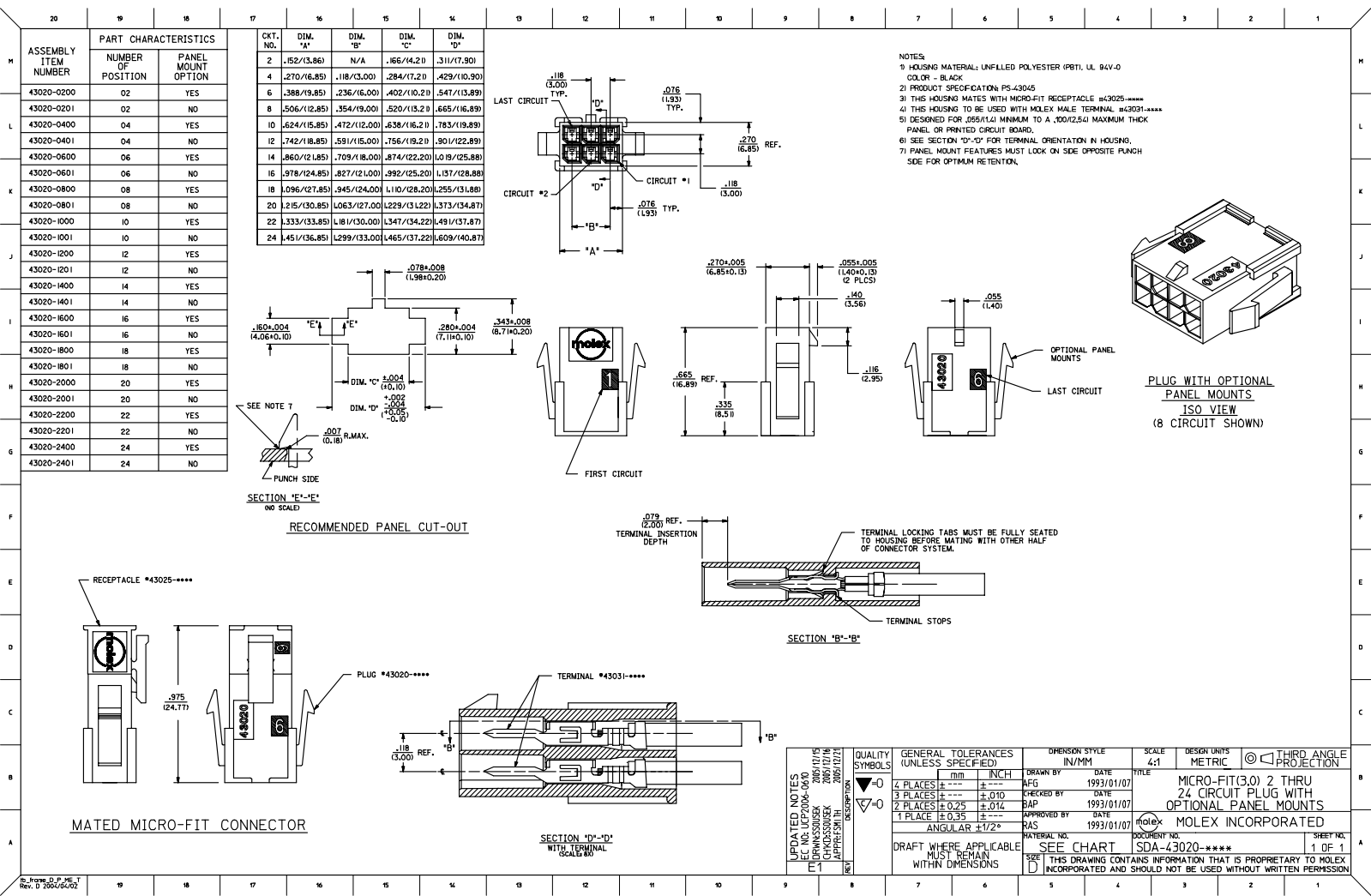
Micro-Fit 3.0™ Crimp Terminal, Male

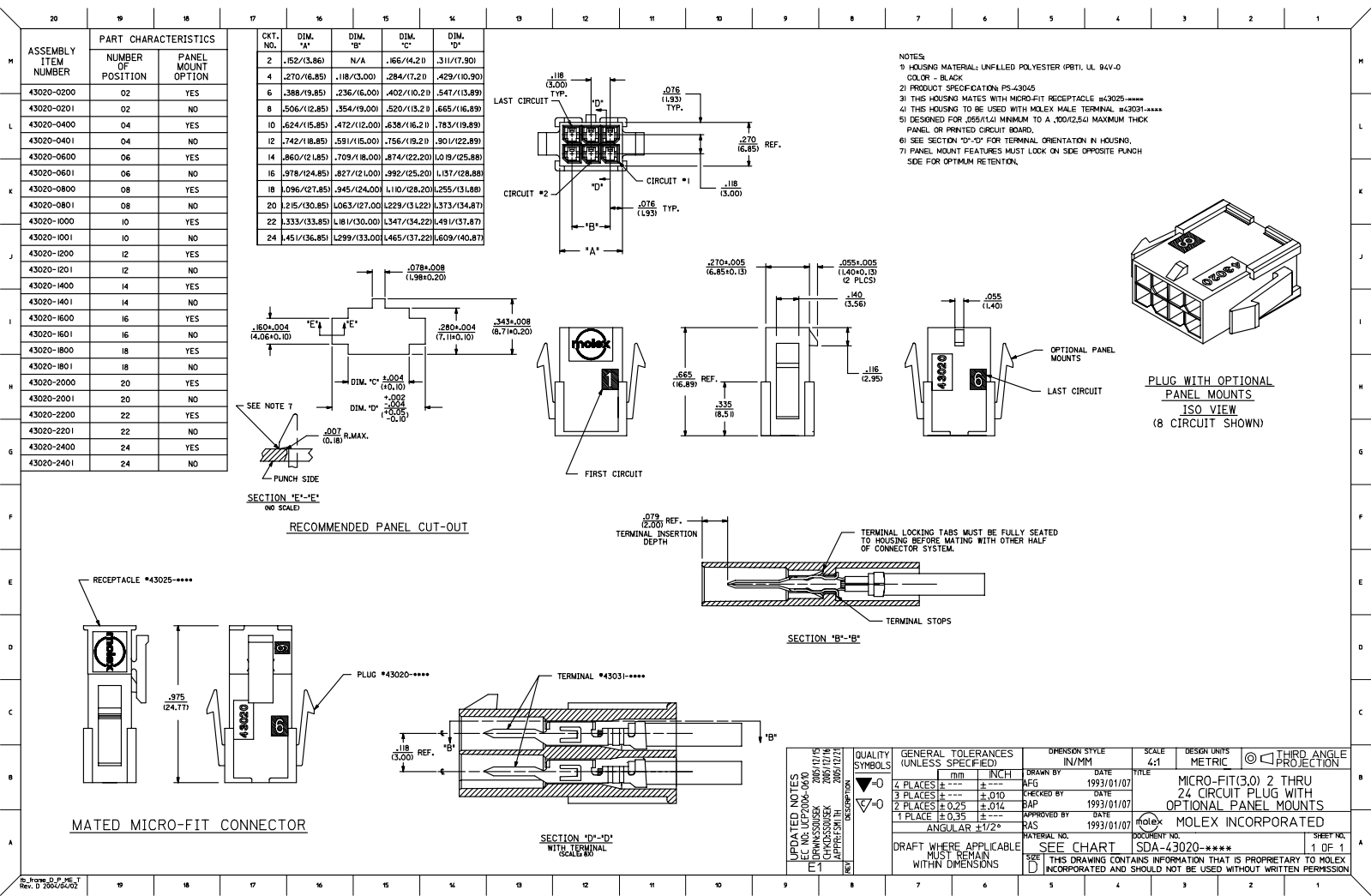
Sales Drawing

SDA-43020-****

[Feedback](#) [Privacy](#) [Legal](#) [Site Map](#) [Help](#)

Copyright 2005-2008

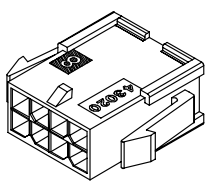




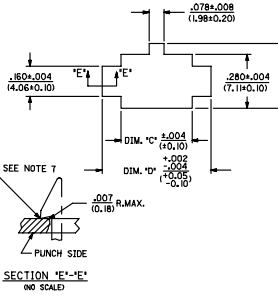
ASSEMBLY ITEM NUMBER	PART CHARACTERISTICS	
	NUMBER OF POSITION	PANEL MOUNT OPTION
43020-0200	02	YES
43020-0201	02	NO
43020-0400	04	YES
43020-0401	04	NO
43020-0600	06	YES
43020-0601	06	NO
43020-0800	08	YES
43020-0801	08	NO
43020-1000	10	YES
43020-1001	10	NO
43020-1200	12	YES
43020-1201	12	NO
43020-1400	14	YES
43020-1401	14	NO
43020-1600	16	YES
43020-1601	16	NO
43020-1800	18	YES
43020-1801	18	NO
43020-2000	20	YES
43020-2001	20	NO
43020-2200	22	YES
43020-2201	22	NO
43020-2400	24	YES
43020-2401	24	NO

CKT. NO.	DIM. "A"	DIM. "B"	DIM. "C"	DIM. "D"
2	.152/(3.86)	N/A	.166/(4.21)	.311/(7.90)
4	.270/(6.85)	.118/(3.00)	.284/(7.21)	.429/(10.90)
6	.388/(9.85)	.236/(6.00)	.402/(10.21)	.547/(13.89)
8	.506/(12.85)	.354/(9.00)	.520/(13.21)	.665/(16.89)
10	.624/(15.85)	.472/(12.00)	.538/(13.62)	.783/(19.89)
12	.742/(18.85)	.591/(15.00)	.756/(19.21)	.901/(22.89)
14	.860/(21.85)	.709/(18.00)	.874/(22.21)	1.019/(25.88)
16	.978/(24.85)	.827/(21.00)	.992/(25.21)	1.137/(28.88)
18	1.096/(27.85)	.945/(24.00)	1.110/(28.21)	1.255/(31.88)
20	1.215/(30.85)	1.063/(27.00)	1.229/(31.22)	1.373/(34.87)
22	1.333/(33.85)	1.181/(30.00)	1.347/(34.22)	1.491/(37.87)
24	1.451/(36.85)	1.299/(33.00)	1.465/(37.22)	1.609/(40.87)

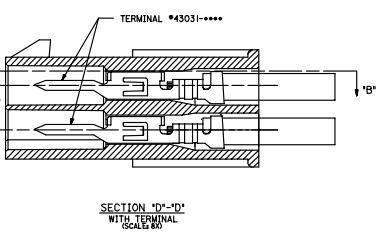
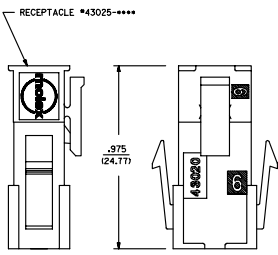
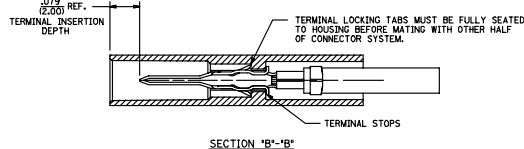
- NOTES:
 1) HOUSING MATERIAL: UNFILLED POLYESTER (PBT), UL 94V-0
 COLOR - BLACK
 2) PRODUCT SPECIFICATION: PS-43025
 3) THIS HOUSING MATES WITH MICRO-FIT RECEPTACLE #43025-*****
 4) THIS HOUSING TO BE USED WITH MOLEX MALE TERMINAL #43031-*****
 5) DESIGNED FOR .055(1.41) MINIMUM TO A .100(2.54) MAXIMUM THICK PANEL OR PRINTED CIRCUIT BOARD.
 6) SEE SECTION "D"- "D'" FOR TERMINAL ORIENTATION IN HOUSING.
 7) PANEL MOUNT FEATURES MUST LOCK ON SIDE OPPOSITE PUNCH SIDE FOR OPTIMUM RETENTION.



PLUG WITH OPTIONAL PANEL MOUNTS
 ISO VIEW
 (8 CIRCUIT SHOWN)



RECOMMENDED PANEL CUT-OUT



QUALITY SYMBOLS ▽=0 ▽=0.05 ▽=0.10 ▽=0.15 ▽=0.20 ▽=0.25 ▽=0.30 ▽=0.35 ▽=0.40 ▽=0.45 ▽=0.50 ▽=0.55 ▽=0.60 ▽=0.65 ▽=0.70 ▽=0.75 ▽=0.80 ▽=0.85 ▽=0.90 ▽=0.95 ▽=1.00	GENERAL TOLERANCES (UNLESS SPECIFIED) 4 PLACES ±.005 3 PLACES ±.010 2 PLACES ±.025 1 PLACE ±.035 ANGULAR ±1/2°	DIMENSION STYLE IN/MM DRAWN BY: AFG CHECKED BY: BAP APPROVED BY: RAS DATE: 1993/01/07 DATE: 1993/01/07 DATE: 1993/01/07	SCALE 4:1 DESIGN UNITS METRIC THIRD ANGLE PROJECTION	TITLE MICRO-FIT(3.0) 2 THRU 24 CIRCUIT PLUG WITH OPTIONAL PANEL MOUNTS MOLEX INCORPORATED DOCUMENT NO. SDA-43020-***** SHEET NO. 1 OF 1	
	DRAFT WHERE APPLICABLE MUST REMAIN WITHIN DIMENSIONS	SEE CHART	THIS DRAWING CONTAINS INFORMATION THAT IS PROPRIETARY TO MOLEX INCORPORATED AND SHOULD NOT BE USED WITHOUT WRITTEN PERMISSION		
	UPDATED NOTES DEC. 1993 LCP2006-0010 CHANGED DIMENSIONS CHANGED DIMENSIONS CHANGED DIMENSIONS				