

Series image - Reference only

EU RoHS

China RoHS

ELV and RoHS Compliant



Duration at Max. Process Temperature (seconds) 5

Lead-free Process Capability

Wave Capable (TH only)

Max. Cycles at Max. Process Temperature

3

Process Temperature max. C

230

Search Parts in this Series

[6410 Series](#)

Mates With

KK® Crimp Terminal Housing [2695](#), [6471](#)

Part Number: **0022272041**

Status: **Active**

Description: 2.54mm (.100") Pitch KK® Header, Vertical, with Friction Lock, 4 Circuits, Tin (Sn) Plating

Documents:

- [Drawing \(PDF\)](#)
- [Product Specification PS-10-07 \(PDF\)](#)
- [Product Specification PS-99020-0088 \(PDF\)](#)
- [3D Model](#)
- [Related Catalog Page \(PDF\)](#)

Order Products:

[Check Distributor Inventory](#)

Part Detail: [\(show all\)](#)

General

Physical

Electrical

Material Info

Reference - Drawing Numbers

General

Product Family	PCB Headers
Series	6410
Application	Wire-to-Board
Product Name	KK®

Physical

Breakaway	No
Circuits (Loaded)	4
Circuits (maximum)	4
Color - Resin	Natural (White)
Flammability	94V-0
Lock to Mating Part	Yes
Material - Metal	Brass
Material - Plating Mating	Tin
Material - Plating Termination	Tin
Material - Resin	Nylon
Number of Rows	1
Orientation	Vertical
PC Tail Length (in)	0.140 In
PC Tail Length (mm)	3.56 mm
PCB Locator	No
PCB Retention	None
Packaging Type	Bag
Pitch - Mating Interface (in)	0.100 In
Pitch - Mating Interface (mm)	2.54 mm
Plating min: Mating (uin)	200
Plating min: Mating (um)	5
Plating min: Termination (uin)	200
Plating min: Termination (um)	5
Polarized to PCB	No
Shrouded	Partial
Stackable	No
Temperature Range - Operating	0°C to +75°C

Termination Interface: Style

Through Hole

Electrical

CSA	LR19980
Current - Maximum	4.000 Amp
UL	E29179
Voltage - Maximum	250V

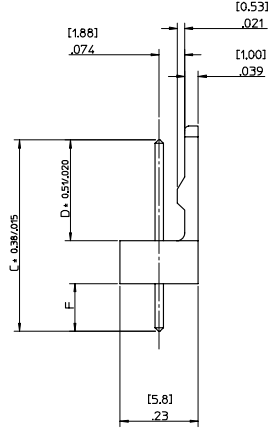
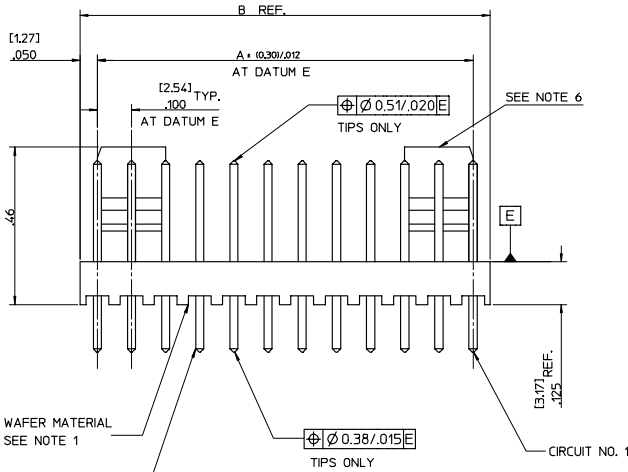
Material Info

Old Part Number	AE-6410-04A(102)
-----------------	------------------

Reference - Drawing Numbers

Product Specification	PS-10-07
Product Specification	PS-99020-0088
Sales Drawing	SDAE-6410-N

NO. OF CCTS	DIMN. 'A'	DIMN. 'B'
2	(2.54) 100	(5.08) 200
3	(5.08) .200	(7.62) .300
4	(7.62) .300	(10.16) .400
5	(10.16) .400	(12.70) .500
6	(12.70) .500	(15.24) .600
7	(15.24) .600	(17.78) .700
8	(17.78) .700	(20.32) .800
9	(20.32) .800	(22.86) .900
10	(22.86) .900	(25.40) 1.000
11	(25.40) 1.000	(27.94) 1.100
12	(27.94) 1.100	(30.48) 1.200
13	(30.48) 1.200	(33.02) 1.300
14	(33.02) 1.300	(35.56) 1.400
15	(35.56) 1.400	(38.10) 1.500
16	(38.10) 1.500	(40.64) 1.600
17	(40.64) 1.600	(43.18) 1.700
18	(43.18) 1.700	(45.72) 1.800
19	(45.72) 1.800	(48.26) 1.900
20	(48.26) 1.900	(50.80) 2.000
21	(50.80) 2.000	(53.34) 2.100
22	(53.34) 2.100	(55.88) 2.200
23	(55.88) 2.200	(58.42) 2.300
24	(58.42) 2.300	(60.96) 2.400
25	(60.96) 2.400	(63.50) 2.500
26	(63.50) 2.500	(66.04) 2.600
27	(66.04) 2.600	(68.58) 2.700
28	(68.58) 2.700	(71.12) 2.800

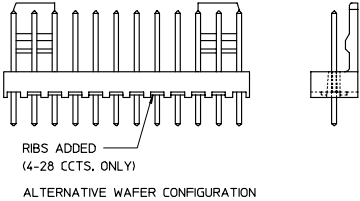


(0.64)/.025 SQ. PIN BRASS FOR PLATING SEE SHEET 2

AE-6410- N * (*)

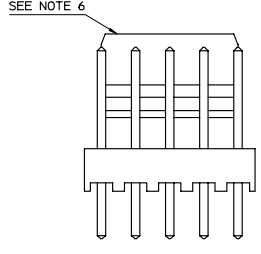
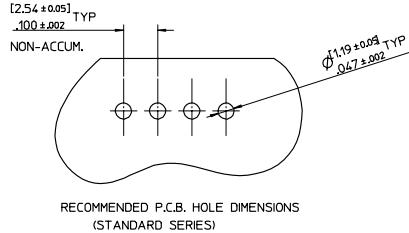
NO. OF CCTS
WAIVER ASSY. OPTION

PLATING TYPE



NOTES:

1. WAIVER MATERIAL: NYLON, 94V-0
2. PIN PUSH OUT FORCE: (0.907 Kg)/2lbs MIN.
3. WAFERS STACKABLE END TO END WITH (2.54)/.100 BETWEEN END PINS
4. THIS PART CONFORMS TO MOLEX PROD. SPEC. PS99020-0088.
5. PIN SOLDERABILITY PER MOLEX SPEC. NO. 152.
6. SINGLE RAMP ON 2-6 CCTS TWO RAMPS ON 7-28 CCTS. AS SHOWN.
7. PRODUCT SPECIFICATION: PS-99020-0087
8. PCB THICKNESS 1.6MM



CHANGED DOC. TYPE EC NO. E2008-0119 DRAWN BY CHKD: APPR. COMMUNITY AZ	2007/09/10 2007/09/10 2007/09/10	DESCRIPTION	QUALITY SYMBOLS ▽=0	GENERAL TOLERANCES (UNLESS SPECIFIED)		MM/IN	SCALE	DESIGN UNITS	THIRD ANGLE PROJECTION
				4 PLACES ± .010 ± .010	3 PLACES ± .010 ± .010	2 PLACES ± .025 ± .014	1 PLACE ± .035 ± .010	ANGULAR ± 5°	MM/IN
DRAWN BY T. MAHON				DATE 28/01/03		TITLE WAIVER, FRICTION LOCK KK (2.54)/.100 FOR (0.64)/.025 SQ. PINS		MATERIAL NO. SDAE-6410-N	
CHECKED BY BMAGUIRE				DATE 28/01/03		APPROVED BY JDENNEHY		DATE 2005/03/11	
DRAFT WHERE APPLICABLE MUST REMAIN WITHIN DIMENSIONS				SEE CHART		DOCUMENT NO.		SHEET NO. 1 OF 3	
SIZE A2 THIS DRAWING CONTAINS INFORMATION THAT IS PROPRIETARY TO MOLEX INCORPORATED AND SHOULD NOT BE USED WITHOUT WRITTEN PERMISSION									

ENG. NO.	AE-6410-NA (102)	AE-6410-NC (102)	AE-6410-ND (102)	AE-6410-NH (102)	AE-6410-NJ (102)	AE-6410-NL (102)		
DIMN. "D"	(7.50 ±0.25) .295 ±.010	(7.14 ±0.25) .281 ±.010	(8.05 ±0.25) .317 ±.010	(7.49 ±0.25) .295 ±.010	(18.80 ±0.38) .740 ±.015	(8.50 ±0.38) .335 ±.015		
DIMN. "C"	(14.22) / .560	(20.32) / .800	(14.22) / .560	(14.98) / .590	(25.40) / 1.000	(23.80) / .937		
DIMN. "F"	(3.56) / .140 REF	(10.00) / .394 REF	(2.99) / .118 REF	(4.32) / .170 REF	(3.43) / .135 REF	(12.13) / .477 REF		
PLATING	TIN MIN. (0.005)/.0002 OVER (0.0025)/.0001 COPPER MIN.	TIN MIN. (0.005)/.0002 OVER (0.0025)/.0001 COPPER MIN.	TIN MIN. (0.005)/.0002 OVER (0.0025)/.0001 COPPER MIN.	TIN MIN. (0.005)/.0002 OVER (0.0025)/.0001 COPPER MIN.	TIN MIN. (0.005)/.0002 OVER (0.0025)/.0001 COPPER MIN.	TIN MIN. (0.005)/.0002 OVER (0.0025)/.0001 COPPER MIN.		
NO. OF CIRCUITS	2	AE-6410-241(102) 22-27-2021	AE-6410-261(102) 38-00-6292	AE-6410-201(102) 38-00-5882	AE-6410-241(102) 38-00-6754	AE-6410-241(102) NOT TOOLED	AE-6410-241(102) NOT TOOLED	
	3	3 A(102) 2031	3 C(102) 6293	3 D(102) 5883	3 H(102) NOT TOOLED	3 J(102) NOT TOOLED	L(102) NOT TOOLED	
	4	4 A(102) 2041	4 C(102) 6294	4 D(102) 5884	4 H(102) 22-27-2046	4 J(102) NOT TOOLED	L(102) NOT TOOLED	
	5	5 A(102) 2051	5 C(102) 6295	5 D(102) 5885	5 H(102) NOT TOOLED	5 J(102) 22-27-2057	L(102) NOT TOOLED	
	6	6 A(102) 2061	6 C(102) 6296	6 D(102) 5886	6 H(102) NOT TOOLED	6 J(102) NOT TOOLED	L(102) NOT TOOLED	
	7	7 A(102) 2071	7 C(102) 6297	7 D(102) 5887	7 H(102) NOT TOOLED	7 J(102) NOT TOOLED	L(102) NOT TOOLED	
	8	8 A(102) 2081	8 C(102) 6298	8 D(102) 5888	8 H(102) NOT TOOLED	8 J(102) 22-27-2087	L(102) NOT TOOLED	
	9	9 A(102) 2091	9 C(102) 6299	9 D(102) 5889	9 H(102) NOT TOOLED	9 J(102) NOT TOOLED	L(102) NOT TOOLED	
	10	10 A(102) 2101	10 C(102) 6300	10 D(102) 5890	10 H(102) NOT TOOLED	10 J(102) NOT TOOLED	L(102) NOT TOOLED	
	11	11 A(102) 2111	11 C(102) 6301	11 D(102) 5891	11 H(102) NOT TOOLED	11 J(102) NOT TOOLED	L(102) NOT TOOLED	
	12	12 A(102) 2121	12 C(102) 6302	12 D(102) 5892	12 H(102) 22-27-2126	12 J(102) NOT TOOLED	L(102) NOT TOOLED	
	13	13 A(102) 2131	13 C(102) 6303	13 D(102) 5893	13 H(102) NOT TOOLED	13 J(102) NOT TOOLED	L(102) NOT TOOLED	
	14	14 A(102) 2141	14 C(102) 6304	14 D(102) 5894	14 H(102) NOT TOOLED	14 J(102) NOT TOOLED	L(102) NOT TOOLED	
	15	15 A(102) 2151	15 C(102) 6305	15 D(102) 5895	15 H(102) NOT TOOLED	15 J(102) NOT TOOLED	L(102) NOT TOOLED	
	16	16 A(102) 2161	16 C(102) 6306	16 D(102) 5896	16 H(102) NOT TOOLED	16 J(102) NOT TOOLED	L(102) NOT TOOLED	
	17	17 A(102) 2171	17 C(102) 6307	17 D(102) 5897	17 H(102) NOT TOOLED	17 J(102) NOT TOOLED	L(102) NOT TOOLED	
	18	18 A(102) 2181	18 C(102) 6308	18 D(102) 5898	18 H(102) NOT TOOLED	18 J(102) NOT TOOLED	L(102) NOT TOOLED	
	19	19 A(102) 2191	19 C(102) 6309	19 D(102) 5899	19 H(102) NOT TOOLED	19 J(102) NOT TOOLED	L(102) NOT TOOLED	
	20	20 A(102) 2201	20 C(102) 38-00-6310	20 D(102) 5900	20 H(102) NOT TOOLED	20 J(102) NOT TOOLED	L(102) NOT TOOLED	
	21	21 A(102) 2211	21 C(102) NOT TOOLED	21 D(102) 5901	21 H(102) NOT TOOLED	21 J(102) NOT TOOLED	L(102) NOT TOOLED	
	22	22 A(102) 2221	22 C(102) NOT TOOLED	22 D(102) 5902	22 H(102) NOT TOOLED	22 J(102) NOT TOOLED	L(102) NOT TOOLED	
	23	23 A(102) 2231	23 C(102) NOT TOOLED	23 D(102) 5903	23 H(102) NOT TOOLED	23 J(102) NOT TOOLED	L(102) NOT TOOLED	
	24	24 A(102) 2241	24 C(102) NOT TOOLED	24 D(102) 5904	24 H(102) NOT TOOLED	24 J(102) NOT TOOLED	L(102) NOT TOOLED	
	25	25 A(102) 2251	25 C(102) NOT TOOLED	25 D(102) 5905	25 H(102) NOT TOOLED	25 J(102) NOT TOOLED	L(102) NOT TOOLED	
	26	26 A(102) 2261	26 C(102) NOT TOOLED	26 D(102) 5906	26 H(102) NOT TOOLED	26 J(102) NOT TOOLED	L(102) NOT TOOLED	
	27	27 A(102) 2271	27 C(102) NOT TOOLED	27 D(102) 5907	27 H(102) NOT TOOLED	27 J(102) NOT TOOLED	L(102) NOT TOOLED	
	28	AE-6410-281(102) 22-27-2281	AE-6410-281(102) NOT TOOLED	AE-6410-281(102) NOT TOOLED	38-00-5908	AE-6410-281(102) NOT TOOLED	AE-6410-281(102) NOT TOOLED	AE-6410-281(102) NOT TOOLED

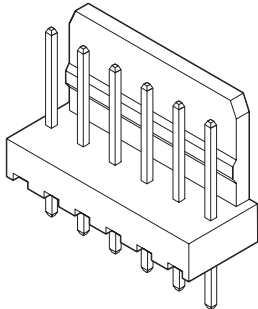
SEE SHEET 1 EC NO: E2008-0119 DRAWN BY: DRW:ND/PRMS CHKCD: 2007/09/10 APPR:COM/MDNY 2007/09/10 REV: AZ	QUALITY SYMBOLS	GENERAL TOLERANCES (UNLESS SPECIFIED)	DIMENSION STYLE	SCALE	DESIGN UNITS	THIRD ANGLE PROJECTION
	$\nabla=0$ $\nabla=0$	4 PLACES ±.--- ±.--- 3 PLACES ±.--- ±.010 2 PLACES ±0.25 ±.014 1 PLACE ±0.35 ±.--- ANGULAR ± 5 °	MM/IN	4:1	METRIC	
	DRAWN BY	DATE	TITLE	WAFER, FRICTION LOCK KK (2.54)/.100 FOR (0.64)/.025 SQ. PINS		
	CHECKED BY	DATE	APPROVED BY	DATE	MOLEX INCORPORATED	
MATERIAL NO.		DOCUMENT NO.		SHEET NO.		
SEE CHART		SDAE-6410-N		2 OF 3		
DRAFT WHERE APPLICABLE MUST REMAIN WITHIN DIMENSIONS THIS DRAWING CONTAINS INFORMATION THAT IS PROPRIETARY TO MOLEX INCORPORATED AND SHOULD NOT BE USED WITHOUT WRITTEN PERMISSION						

ENG. NO.	AE-6410-NA (501)	AE-6410-NA (516)	AE-6410-NK (516)	AE-6410-NC (501)	AE-6410-NA (509)	AE-6410-NS (501)	AE-6410-NA (503)	
DIMN. 'D'	(7.50 ±0.25) .295 ±0.010	(7.50 ±0.25) .295 ±0.010	(9.22) REF .363	(7.14 ±0.25) .281 ±0.010	(7.50 ±0.25) .295 ±0.010	(7.50 ±0.25) .295 ±0.010	(7.50 ±0.25) .295 ±0.010	
DIMN. 'C'	(14.22) / .560	(14.22) / .560	(15.88) / .625	(20.32) / .800	(14.22) / .560	(16.15) / .636	(14.22) / .560	
DIMN. 'F'	(3.56) / .140 REF	(3.56) / .140 REF	(3.48 ±0.25) .137	(10.00) / .394 REF	(3.56) / .140 REF	(5.48) / .216 REF	(3.56) / .140 REF	
PLATING	GOLD MIN. (0.0005)/.000020 OVER (0.00076)/.000030 NICKEL MIN.	GOLD MIN. (0.00025)/.000010 OVER (0.00076)/.000030 NICKEL MIN.	GOLD MIN. (0.00025)/.000010 OVER (0.00076)/.000030 NICKEL MIN.	GOLD MIN. (0.00051)/.000020 OVER (0.00076)/.000030 NICKEL MIN.	GOLD MIN. (0.00127)/.000050 OVER (0.00076)/.000030 NICKEL MIN.	GOLD MIN. (0.00051)/.000020 OVER (0.00076)/.000030 NICKEL MIN.	GOLD MIN. (0.00076)/.000030 OVER (0.00127)/.000050 NICKEL MIN.	
NO. OF CIRCUITS	2	AE-6410-2A(501) 22-29-2021	AE-6410-2A(516) 22-29-2022	AE-6410-2K(516) 38-00-0932	AE-6410-2C(501) 38-00-5909	AE-6410-2A(509) 38-00-7250	AE-6410-2A(503) 38-00-7062	
	3	3 A(501) 2031	3 A(516) 2032	3 K(516) 0933	3 C(501) 0934	3 A(509) 0935	3 A(503) 0936	
	4	4 A(501) 2041	4 A(516) 2042	4 K(516) 0935	4 C(501) 0936	4 A(509) 0937	4 A(503) 0938	
	5	5 A(501) 2051	5 A(516) 2052	5 K(516) 0936	5 C(501) 0937	5 A(509) 0938	5 A(503) 0939	
	6	6 A(501) 2061	6 A(516) 2062	6 K(516) 0937	6 C(501) 0938	6 A(509) 0939	6 A(503) 0940	
	7	7 A(501) 2071	7 A(516) 2072	7 K(516) 0938	7 C(501) 0939	7 A(509) 0940	7 A(503) 0941	
	8	8 A(501) 2081	8 A(516) 2082	8 K(516) 0939	8 C(501) 0940	8 A(509) 0941	8 A(503) 0942	
	9	9 A(501) 2091	9 A(516) 2092	9 K(516) 0940	9 C(501) 0941	9 A(509) 0942	9 A(503) 0943	
	10	10 A(501) 2101	10 A(516) 2102	10 K(516) 0941	10 C(501) 0942	10 A(509) 0943	10 A(503) 0944	
	11	11 A(501) 2111	11 A(516) 2112	11 K(516) 0942	11 C(501) 0943	11 A(509) 0944	11 A(503) 0945	
	12	12 A(501) 2121	12 A(516) 2122	12 K(516) 0943	12 C(501) 0944	12 A(509) 0945	12 A(503) 0946	
	13	13 A(501) 2131	13 A(516) 2132	13 K(516) 0944	13 C(501) 0945	13 A(509) 0946	13 A(503) 0947	
	14	14 A(501) 2141	14 A(516) 2142	14 K(516) 0945	14 C(501) 0946	14 A(509) 0947	14 A(503) 0948	
	15	15 A(501) 2151	15 A(516) 2152	15 K(516) 0946	15 C(501) 0947	15 A(509) 0948	15 A(503) 0949	
	16	16 A(501) 2161	16 A(516) 2162	16 K(516) 0947	16 C(501) 0948	16 A(509) 0949	16 A(503) 0950	
	17	17 A(501) 2171	17 A(516) 2172	17 K(516) 0948	17 C(501) 0949	17 A(509) 0950	17 A(503) 0951	
	18	18 A(501) 2181	18 A(516) 2182	18 K(516) 0949	18 C(501) 0950	18 A(509) 0951	18 A(503) 0952	
	19	19 A(501) 2191	19 A(516) 2192	19 K(516) 0950	19 C(501) 0951	19 A(509) 0952	19 A(503) 0953	
	20	20 A(501) 2201	20 A(516) 2202	20 K(516) 0951	20 C(501) 0952	20 A(509) 0953	20 A(503) 0954	
	21	21 A(501) 2211	21 A(516) 2212	21 K(516) 0952	21 C(501) 0953	21 A(509) 0954	21 A(503) 0955	
	22	22 A(501) 2221	22 A(516) 2222	22 K(516) 0953	22 C(501) 0954	22 A(509) 0955	22 A(503) 0956	
	23	23 A(501) 2231	23 A(516) 2232	23 K(516) 0954	23 C(501) 0955	23 A(509) 0956	23 A(503) 0957	
	24	24 A(501) 2241	24 A(516) 2242	24 K(516) 0955	24 C(501) 0956	24 A(509) 0957	24 A(503) 0958	
	25	25 A(501) 2251	25 A(516) 2252	25 K(516) 0956	25 C(501) 0957	25 A(509) 0958	25 A(503) 0959	
	26	26 A(501) 2261	26 A(516) 2262	26 K(516) 0957	26 C(501) 0958	26 A(509) 0959	26 A(503) 0960	
	27	27 A(501) 2271	27 A(516) 2272	27 K(516) 0958	27 C(501) 0959	27 A(509) 0960	27 A(503) 0961	
	28	AE-6410-28A(501) 22-29-2281	AE-6410-28A(516) 22-29-2282	AE-6410-28K(516) 38-00-0958	AE-6410-28C(501) 38-00-0958	AE-6410-28A(509) 38-00-0958	AE-6410-28A(503) 38-00-0958	AE-6410-28A(503) 38-00-0958

SEE SHEET 1 EC NO: E2008-0119 DRAWN BY: JRM/ND/PRMS CHKD: JRM/ND/PRMS APPLD: JRM/ND/PRMS DATE: 2007/09/10 DATE: 2007/09/10 DATE: 2007/09/10 AZ	QUALITY SYMBOLS	GENERAL TOLERANCES (UNLESS SPECIFIED)	DIMENSION STYLE	SCALE	DESIGN UNITS	THIRD ANGLE PROJECTION	
	$\nabla=0$ $\nabla=0$	4 PLACES ±--- ±--- 3 PLACES ±--- ±.010 2 PLACES ±0.25 ±.014 1 PLACE ±0.35 ±--- ANGULAR ± 5°	MM/IN	4:1	METRIC		
	DRAWN BY: T. MAHON CHECKED BY: BMAGUIRE APPROVED BY: JDENNEHY DATE: 28/01/03 DATE: 28/01/03 DATE: 2005/03/11	TITLE	WAFFER, FRICTION LOCK KK (2.54)/.100 FOR (0.64)/.025 SQ. PINS	MOLEX INCORPORATED MOLEX	MATERIAL NO. SEE CHART	DOCUMENT NO. SDAE-6410-N	SHEET NO. 3 OF 3
	DRAFT WHERE APPLICABLE MUST REMAIN WITHIN DIMENSIONS						THIS DRAWING CONTAINS INFORMATION THAT IS PROPRIETARY TO MOLEX INCORPORATED AND SHOULD NOT BE USED WITHOUT WRITTEN PERMISSION

2.54mm (.100") Pitch KK[®] Header

6410 Vertical Friction Lock



Features and Benefits

- Sizes 2 to 28 circuits
- Friction lock provides passive lock to connector with ramp
- Good in high vibration applications
- Higher backwall than the 6373 Series
- Various pin lengths available

Reference Information

Product Specification: PS-10-07
 Packaging: Bag
 UL File No.: E29179
 CSA File No.: LR19980
 Mates With: 2695 with locking ramp, 6471 and 7880
 Designed In: Inches

Electrical

Voltage: 250V
 Current: 4.0A
 Contact Resistance: 20 milliohms max.
 Dielectric Withstanding Voltage: 1500V
 Insulation Resistance: 50K Megohms min.

Physical

Housing: Nylon, UL 94V-0
 Contact: Brass, 0.64mm (.025") square
 Plating: See Table
 Operating Temperature: 0 to +75°C

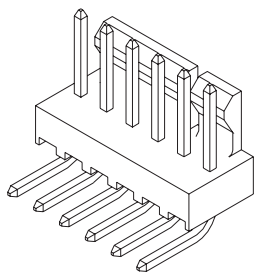
Circuits	Order No.		Lead-free
	Tin	Gold	
2	22-27-2021	22-29-2021	Yes
3	22-27-2031	22-29-2031	
4	22-27-2041	22-29-2041	
5	22-27-2051	22-29-2051	
6	22-27-2061	22-29-2061	
7	22-27-2071	22-29-2071	
8	22-27-2081	22-29-2081	
9	22-27-2091	22-29-2091	
10	22-27-2101	22-29-2101	

Circuits	Order No.		Lead-free
	Tin	Gold	
11	22-27-2111	22-29-2111	Yes
12	22-27-2121	22-29-2121	
13	22-27-2131	22-29-2131	
14	22-27-2141	22-29-2141	
15	22-27-2151	22-29-2151	
16	22-27-2161	22-29-2161	
17	22-27-2171	22-29-2171	
18	22-27-2181	22-29-2181	
19	22-27-2191	22-29-2191	

Circuits	Order No.		Lead-free
	Tin	Gold	
20	22-27-2201	22-29-2201	Yes
21	22-27-2211	22-29-2211	
22	22-27-2221	22-29-2221	
23	22-27-2231	22-29-2231	
24	22-27-2241	22-29-2241	
25	22-27-2251	22-29-2251	
26	22-27-2261	22-29-2261	
27	22-27-2271	22-29-2271	
28	22-27-2281	22-29-2281	

2.54mm (.100") Pitch KK[®] Solid Header

7478 Right Angle, Friction Lock



Features and Benefits

- Sizes 2 to 28 circuits
- Friction lock provides passive lock to connector with ramp
- 7478 with voids is 7832 Series
- Various pin lengths available
- End-to-end stackable
- Edge mount only

Reference Information

Product Specification: PS-10-07
 Packaging: Bag
 UL File No.: E29179
 CSA File No.: LR19980
 Mates With: 2695, 4455, 6471, 7720 and 7880
 Designed In: Inches

Electrical

Voltage: 250V
 Current: 4.0A
 Contact Resistance: 20 milliohms max.
 Dielectric Withstanding Voltage: 1500V
 Insulation Resistance: 50K Megohms min.

Mechanical

Durability: Tin—25 cycles max.
 Gold—100 cycles max.

Physical

Housing: Nylon, UL 94V-0
 Contact: Brass, 0.64mm (.025") square
 Plating: See Table
 Operating Temperature: 0 to +75°C

Circuits	Order No.		Lead-free
	Tin	Gold	
2	22-05-3021	22-12-2024	Yes
3	22-05-3031	22-12-2034	
4	22-05-3041	22-12-2044	
5	22-05-3051	22-12-2054	
6	22-05-3061	22-12-2064	
7	22-05-3071	22-12-2074	
8	22-05-3081	22-12-2084	
9	22-05-3091	22-12-2094	
10	22-05-3101	22-12-2104	

Circuits	Order No.		Lead-free
	Tin	Gold	
11	22-05-3111	22-12-2114	Yes
12	22-05-3121	22-12-2124	
13	22-05-3131	22-12-2134	
14	22-05-3141	22-12-2144	
15	22-05-3151	22-12-2154	
16	22-05-3161	22-12-2164	
17	22-05-3171	22-12-2174	
18	22-05-3181	22-12-2184	
19	22-05-3191	22-12-2194	

Circuits	Order No.		Lead-free
	Tin	Gold	
20	22-05-3201	22-12-2204	Yes
21	22-05-3211	22-12-2214	
22	22-05-3221	22-12-2224	
23	22-05-3231	22-12-2234	
24	22-05-3241	22-12-2244	
25	22-05-3251	22-12-2254	
26	22-05-3261	22-12-2264	
27	22-05-3271	22-12-2274	
28	22-05-3281	22-12-2284	

Note: Circuit 1 designation is used to orient the header to locate the voided circuit. Review mating connector to assure correct mating orientation.