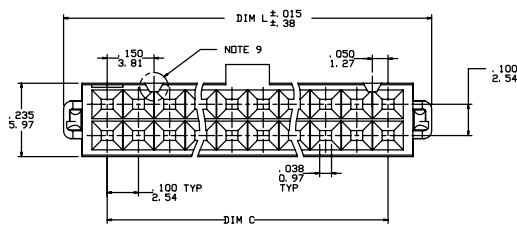
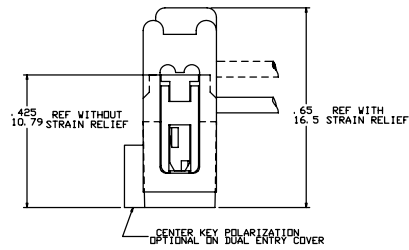
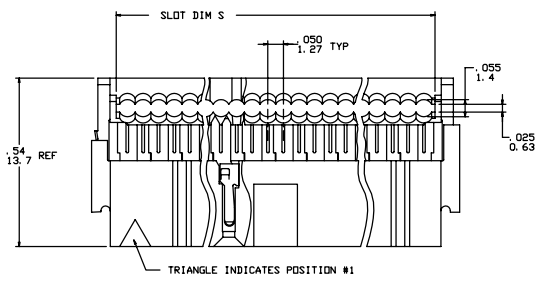
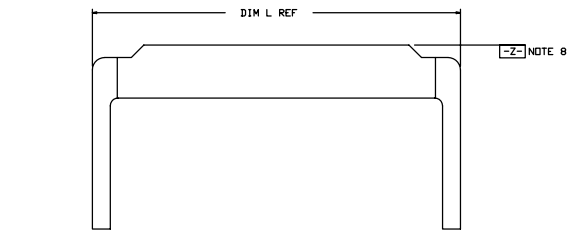




Copyright FCI.

PRODUCT NUMBER
SEE TABLE



mat'l. code		tolerances unless otherwise specified		CUSTOMER COPY		www.fciconnect.com
ltr	ecr no	dr	date	.XX ±.01/.X±.3	projection	title
N	REDRAW	MRC	1991-01-03	.XXX ±.005/.XX±.13		DUAL POLARIZED QUICKIE II ASSEMBLY
P	V13269	JM	1991-12-12	.XXXX ±.0020/.XXX±.051		product family QUICKIE
R	V22169	MSC	1992-05-21	0° ±2°	INCH/MM	size
S	N05-0060	MHT	2005-07-25	engr	scale	NT
T	N09-0400	A.ZH	2010-01-18	M.SYMK	8:1	sheet
				Chr		1 of 2
				appd		
sheet index	revision sheet	T	1-2			

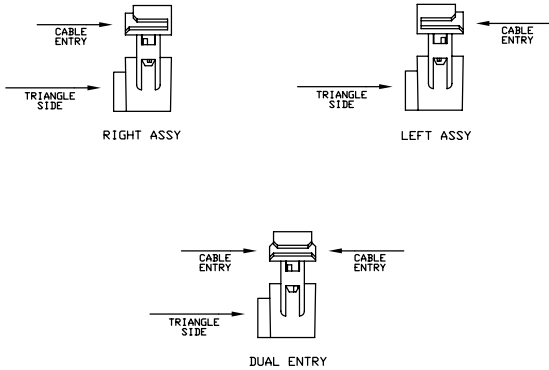
PRODUCT No. NOTE 12	SIZE	DIM L	DIM S	DIM C
66900-X10	2X5	.680/17.27	.520/13.21	.400/10.16
-X14	2X7	.880/22.35	.720/18.29	.600/15.24
-X16	2X8	.980/24.89	.820/20.83	.700/17.78
-X20	2X10	1.180/29.97	1.020/25.91	.900/22.86
-X24	2X12	1.380/35.05	1.220/30.99	1.100/27.94
-X26	2X13	1.480/37.59	1.320/33.53	1.200/30.48
-X30	2X15	1.680/42.67	1.520/38.61	1.400/35.56
-X34	2X17	1.880/47.75	1.720/43.69	1.600/40.64
-X40	2X20	2.180/55.37	2.020/51.31	1.900/48.26
-X44	2X22	2.380/60.45	2.220/56.39	2.100/53.34
-X50	2X25	2.680/68.07	2.520/64.01	2.400/60.96
66900-X60	2X30	3.180/80.77	3.020/76.71	2.900/73.66

DASH NO	COVER		POLARIZATION	STRAIN RELIEF
	STYLE	ORIENTATION		
-0XX	THRU	DUAL ENTRY	DUAL POL.	YES
-1XX	THRU	DUAL ENTRY	DUAL POL.	NO
-2XX	THRU	DUAL ENTRY	CENTER KEY & DUAL POL.	YES
-3XX	THRU	DUAL ENTRY	CENTER KEY & DUAL POL.	NO
-4XX	BLIND	RIGHT	DUAL POL.	YES
-5XX	BLIND	RIGHT	DUAL POL.	NO
-6XX	BLIND	LEFT	DUAL POL.	YES
-7XX	BLIND	LEFT	DUAL POL.	NO
-8XX	BLIND	RIGHT	CENTER KEY & DUAL POL.	YES
-9XX	BLIND	LEFT	CENTER KEY & DUAL POL.	YES

NOTES:

1. TERMINAL MATERIAL: FULL HARD PHOS. BRONZE ALLOY, UNS-C51000.
2. TERMINAL PLATING: 50u"/27u MIN NI UNDERPLATE OVER ENTIRE TERMINAL AND 30u"/.76u MIN Au DR GXT IN CONTACT AREA ONLY.
3. MOLDING MATERIAL: BASE & COVER- GLASS FILLED POLYESTER, FLAME RETARDANT PER UL94V-0, COLOR- BLUE.
4. CONNECTOR ASSEMBLIES PACKAGED IN TUBES.
5. THE FIRST TWO CAVITY POSITIONS AND THE LAST TWO, ARE IDENTIFIED BY NUMBER.
6. POLARIZING FEATURES ARE DESCRIBED IN TABLE.
7. MOLDING MATERIAL: STRAIN RELIEF- NYLON, FLAME RETARDANT PER UL94V-0, COLOR- BLUE.
8. STRAIN RELIEF DIM APPLIES WHEN DATUM -Z- IS HELD IN A RESTRAINED CONDITION.
9. THE POLARIZING FEATURE ON THIS END IS NON-EXISTANT ON 2X5 AND 2X7 POSITION CONNECTORS.
10. 2x5 POSITION NOT AVAILABLE WITH POLARIZATION SLOT ON CENTER KEY STYLE.
11. TO ORDER PARTS THAT DO NOT HAVE 'MARKED INFO', (DATE, P/N, ETC), ADD A 'U' AFTER THE PART NUMBER. EXAMPLE 66900-010 U.
12. ADD 'LF' SUFFIX AT THE END OF PART NUMBER FOR LEAD FREE OPTION.
13. IF 'LF' P/N THE PRODUCT MEETS EUROPEAN UNION DIRECTIVES AND OTHER COUNTRY REGULATION AS DESCRIBED IN GS-22-008.
14. THE PRODUCT IS NOT INTENDED TO BE EXPOSED TO A MANUFACTURING SOLDER PROCESS.
15. PRODUCT SPEC. BUS-12-082
16. PLATING OPTIONS: MAY BE EITHER GOLD OR GXT PLATED AT MANUFACTURER'S OPTION.

COVER ORIENTATION



Copyright FCI.

tolerances unless otherwise specified		CUSTOMER COPY	www.fciconnect.com
linear	.XX ±.01/.XX.3 .XXX ±.005/.XXX.13 .XXXX ±.0020/.XXXX.051	projection	
angles	0° ±2°	INCH/MM	product family QUICKIE
dr	M. CORNMAN 1/3/91	scale	code NT
enfr	M.SYMK 1/3/91	8:1	sheet 2 of 2
chr	M.SYMK 1/3/91	A4	size 66900
appd	M.SYMK 1/3/91		