

Switch Language

English

Need Assistance?

Contact Us
Find a Distributor
Order Samples
Tech Library

Printer-friendly page

Email this page

[Home](#) [Crimp Housings](#) [Datasheet](#)

Part Number: 0039012105

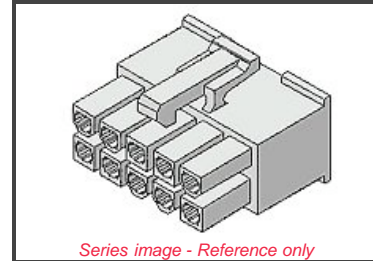
Status: Active **Overview:** [Mini-Fit Jr.™](#)

Description: 4.20mm (.165") Pitch Mini-Fit Jr.™ Receptacle Housing, Dual Row, UL 94V-0, 10 Circuits

Documents:

Note - Please disable browser pop-up blockers for documents on www.molex.com

- [Drawing \(PDF\)](#) [3D Model](#)
- [Test Summary \(PDF\)](#) [Related Catalog Page \(PDF\)](#)



Order Products:

[Check Distributor Inventory](#) [Add to My Parts](#)
[Request Samples](#)

Part Detail: [\(show all\)](#)

[General](#) [Physical](#) [Electrical](#) [Material Info](#)

General

Product Family	Crimp Housings
Series	5557
Overview	Mini-Fit Jr.™
Product Name	Mini-Fit Jr.™

Physical

Breakaway	No
Circuits (maximum)	10
Color - Resin	Ivory
Flammability	94V-0
Flammability	94V-2
Gender	Female
Material - Resin	Nylon
Number of Rows	2
Packaging Type	Bag
Panel Mount	No
Pitch - Mating Interface (in)	0.165 In
Pitch - Mating Interface (mm)	4.20 mm
Pitch - Term. Interface (in)	0.165 In
Pitch - Term. Interface (mm)	4.20 mm
Polarized to Mating Part	Yes
Stackable	No
Temperature Range - Operating	-40°C to +105°C

Electrical

CSA	LR19980
Current - Maximum	9.000 Amp
TUV	R75142
UL	E29179

Material Info

Old Part Number	5557-10R-210
-----------------	--------------

EU RoHS
ELV and RoHS Compliant



Need more information on product compliance?

Email productcompliance@molex.com

Please visit the [Contact Us](#) section for any non-product compliance questions.

Search Parts in this Series

[5557 Series](#)

Mates With

[5559d](#), [5566vw](#), [5566vwo](#), [5569rdf](#),
[5569rdp](#), [43810a](#), [43810b](#), [43810c](#),
[43810d](#), [44068a](#), [44068b](#), [44068c](#),
[44068d](#), [44281](#), [44472dw](#), [44472dwo](#),
[87427](#), [87427r](#), [87427rf](#), [42404](#),
[44474](#), [42440](#), [43879](#), [42475](#)

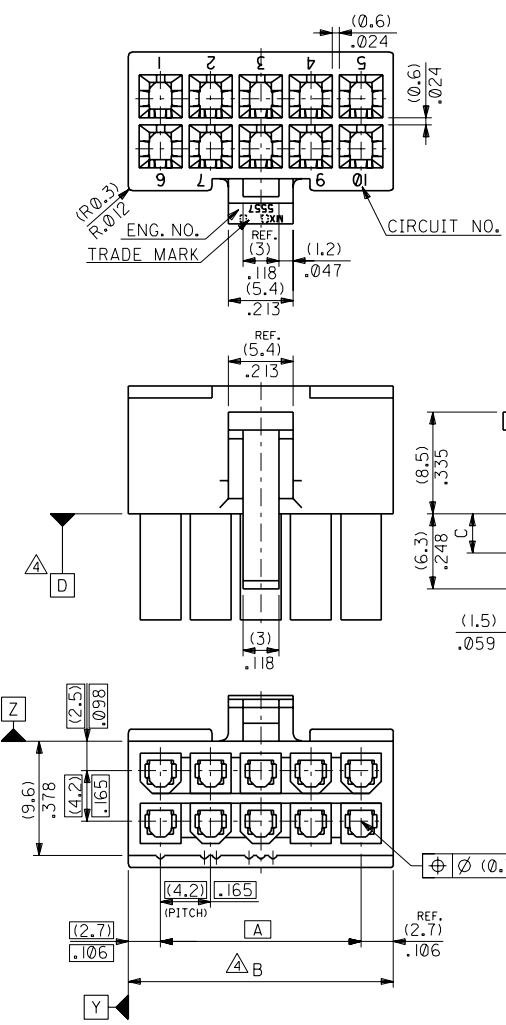
Use With

[5556](#), [44476](#), [44485](#), [41995](#)

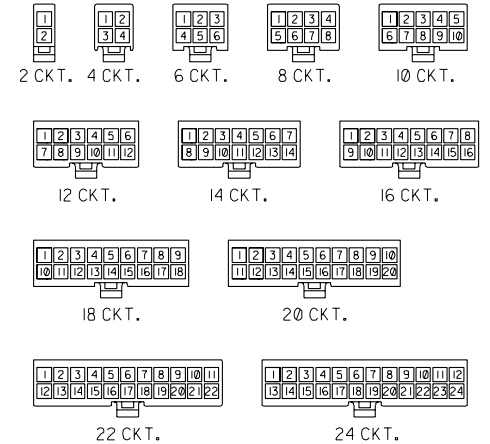
ENG. NO. SD-5557-NR-210
EDP NO. 39-01-2**5

ALL DIMENSIONS IN METRIC DO NOT SCALE DRAWING

8 7 6 5 4 3 2 1



NOTES
 1. TERMINAL : 5556 SERIES
 2. MATE WITH : 5559 SERIES
 5566 SERIES
 5569 SERIES
 3. (METRIC) VALUES SHOWN GOVERN OVER ENGLISH CONVERSION VALUES.
 △ TO BE MEASURED AT POSITION OF □ SURFACE.



CIRCUIT SIZE LAYOUT (SCALE: 1-1)

(3.6)	(47.4)	2.031	(42)	1.819	39-01-2245	5557-24R-210	24
.142	(43.2)	1.866	(37.8)	1.654	-2225	-22R-210	22
	(39)	1.701	(33.6)	1.488	-2205	-20R-210	20
	(34.8)	1.535	(29.4)	1.323	-2185	-18R-210	18
	(30.6)	1.37	(25.2)	1.158	-2165	-16R-210	16
	(26.4)	1.205	(21)	.992	-2145	-14R-210	14
	(22.2)	1.039	(16.8)	.827	-2125	-12R-210	12
(3.3)	(18)	.874	(12.6)	.661	-2105	-10R-210	10
.129	(13.8)	.709	(8.4)	.496	-2085	-08R-210	8
	(9.6)	.543	(4.2)	.331	-2065	-06R-210	6
	(5.4)	.378		.165	-2045	-04R-210	4
		.213			39-01-2025	5557-02R-210	2

材料 MATERIAL		66NYLON (UL94V-0)	
仕上げ FINISH		---	
適用電線範囲 WIRE RANGE		---	
被覆外径 INS. RANGE		---	
DRAWN BY 90/2/22		CHK'D BY 97/0/08	
S.MOCHIZUKI		M.FUKUSHIMA	
APP'D BY 97/0/08		尺度 SCALE 3-1	
M.FUKUSHIMA			

MOLEX	MOLEX-JAPAN CO.,LTD.	EDP NO.	39-01-2**5
日本モレックス株式会社		ENG. NO.	SD-5557-NR-210
		TITLE 名称	NEW MINI FIT CONN. REC. HOUSING

角度 ANGLE	±30
30以上 OVER	±8.4
10以上 未過 UNDER	±3.3
10以下 未過 UNDER	±0.2

記号 LTR	変更内容 REVISION RECORD	DR. CHK.	日付 DATE
一般公差 GENERAL TOLERANCES			

REVISION RECORD
 REVISE ONLY ON CAD SYSTEM
 THIS DRAWING CONTAINS INFORMATION THAT IS PROPRIETARY TO MOLEX(JAPAN) AND SHOULD NOT BE USED WITHOUT WRITTEN PERMISSION
 本図面は日本モレックス(株)の所有する情報を含むもので 当社の許可なく複製を禁止する。

MXJ-8