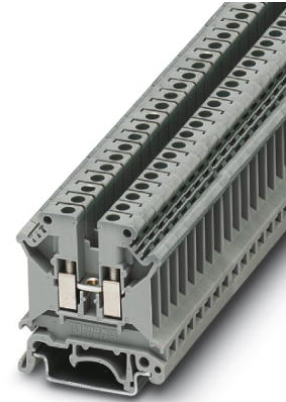


UK 5 N

Order No.: 3004362

<http://eshop.phoenixcontact.de/phoenix/treeViewClick.do?UID=3004362>

Universal terminal block with screw connection, cross section: 0.2 mm²
... 4 mm², AWG: 30 - 10, width: 6.2 mm, color: gray

**Commercial data**

EAN	4017918090760
Pack	50 Pcs.
Customs tariff	85369010
Weight/Piece	0.009233 KG
Catalog page information	Page 277 (CL-2007)

Product notes

WEEE/RoHS-compliant since:
01/01/2003



<http://www.download.phoenixcontact.com>
Please note that the data given here has been taken from the online catalog. For comprehensive information and data, please refer to the user documentation. The General Terms and Conditions of Use apply to Internet downloads.

Technical data**General**

Number of levels	1
Number of connections	2
Color	gray

Insulating material	PA
Inflammability class acc. to UL 94	V0

Dimensions

Width	6.2 mm
Length	42.5 mm
Height NS 35/7,5	47 mm
Height NS 35/15	54.5 mm
Height NS 32	52 mm

Technical data

Maximum load current	41 A (with 6 mm ² conductor cross section)
Rated surge voltage	8 kV
Pollution degree	3
Surge voltage category	III
Insulating material group	I
Connection in acc. with standard	IEC 60947-7-1
Nominal current I _N	41 A
Nominal voltage U _N	800 V
Open side panel	ja

Connection data

Conductor cross section solid min.	0.2 mm ²
Conductor cross section solid max.	6 mm ²
Conductor cross section stranded min.	0.2 mm ²
Conductor cross section stranded max.	4 mm ²
Conductor cross section AWG/kcmil min.	24
Conductor cross section AWG/kcmil max	10
Conductor cross section stranded, with ferrule without plastic sleeve min.	0.25 mm ²
Conductor cross section stranded, with ferrule without plastic sleeve max.	4 mm ²
Conductor cross section stranded, with ferrule with plastic sleeve min.	0.25 mm ²
Conductor cross section stranded, with ferrule with plastic sleeve max.	2.5 mm ²
2 conductors with same cross section, solid min.	0.2 mm ²
2 conductors with same cross section, solid max.	1.5 mm ²

2 conductors with same cross section, stranded min.	0.2 mm ²
2 conductors with same cross section, stranded max.	1.5 mm ²
2 conductors with same cross section, stranded, TWIN ferrules with plastic sleeve, min.	0.5 mm ²
2 conductors with same cross section, stranded, TWIN ferrules with plastic sleeve, max.	2.5 mm ²
2 conductors with same cross section, stranded, ferrules without plastic sleeve, min.	0.25 mm ²
2 conductors with same cross section, stranded, ferrules without plastic sleeve, max.	1.5 mm ²
Cross-section with insertion bridge, solid max.	4 mm ²
Cross-section with insertion bridge, stranded max.	4 mm ²
Type of connection	Screw connection
Stripping length	8 mm
Internal cylindrical gage	A4
Screw thread	M 3
Tightening torque, min	0.6 Nm
Tightening torque max	0.8 Nm

Certificates / Approvals

Approval logo



CSA

Nominal voltage U _N	600 V
Nominal current I _N	40 A
AWG/kcmil	28-10

CUL

Nominal voltage U _N	600 V
Nominal current I _N	30 A
AWG/kcmil	30-10

UL

Nominal voltage U _N	600 V
--------------------------------	-------

Nominal current I_N	30 A
AWG/kcmil	30-10
Certification	ABS, BV, CB, CCA, CSA, CUL, DNV, GL, GOST, KEMA, KR, LR, NK, PRS, RS, UL

requested approbations

Certification Ex:	CUL-EX, FM, GL-EX, IECEx, KEMA-EX, UL-EX
-------------------	--

Accessories

Item	Designation	Description
Assembly		
3003224	ATP-UK	Separating plate, for visual and electrical separation of terminal groups, width: 1.5 mm, color: Gray
3022218	CLIPFIX 35	Snap-on end bracket, for 35 mm NS 35/7.5 or NS 35/15 mounting rail, can be fitted with Zack strip ZB 8 and ZB 8/27, terminal strip marker KLM 2 and KLM, width: 9.5 mm, color: gray
3003020	D-UK 4/10	Cover, width: 1.8 mm, color: gray
1201442	E/UK	End clamp, for supporting the electronic base. If mounted vertically, 2 end clamps are required in each case
1024014	EA 5	Single covers, color: transparent
1024085	EA 5-WS	Single covers, for covering one terminal block, with black symbol (lightning flash) snap fit, color: transparent/yellow
0201595	FB-150 METER	Cross connection rail, for fixed bridging of identical inputs and outputs, made of Cu, nickel-plated, 1 m long
1201028	NS 32 AL UNPERF 2000MM	G rail 32 mm (NS 32)
1201280	NS 32 CU/120QMM UNPERF 2000MM	G-profile DIN rail, deep-drawn, material: Copper, unperforated, height 15 mm, width 32 mm, length 2 m
1201358	NS 32 CU/35QMM UNPERF 2000MM	G-profile DIN rail, material: Copper, unperforated, height 15 mm, width 32 mm, length 2 m
1201002	NS 32 PERF 2000MM	G-profile DIN rail, material: Steel, perforated, height 15 mm, width 32 mm, length 2 m
1201015	NS 32 UNPERF 2000MM	G-profile DIN rail, material: Steel, unperforated, height 15 mm, width 32 mm, length 2 m
0801762	NS 35/ 7,5 CU UNPERF 2000MM	DIN rail, material: Copper, unperforated, height 7.5 mm, width 35 mm, length: 2 m
0801733	NS 35/ 7,5 PERF 2000MM	DIN rail, material: Steel, perforated, height 7.5 mm, width 35 mm, length: 2 m
0801681	NS 35/ 7,5 UNPERF 2000MM	DIN rail, material: Steel, unperforated, height 7.5 mm, width 35 mm, length: 2 m
1201756	NS 35/15 AL UNPERF 2000MM	DIN rail, deep-drawn, high profile, unperforated, 1.5 mm thick, material: Aluminum, height 15 mm, width 35 mm, length 2 m

1201895	NS 35/15 CU UNPERF 2000MM	DIN rail, material: Copper, unperforated, 1.5 mm thick, height 15 mm, width 35 mm, length: 2 m
1201730	NS 35/15 PERF 2000MM	DIN rail, material: Steel, perforated, height 15 mm, width 35 mm, length: 2 m
1201714	NS 35/15 UNPERF 2000MM	DIN rail, material: Steel, unperforated, height 15 mm, width 35 mm, length: 2 m
1201798	NS 35/15-2,3 UNPERF 2000MM	DIN rail, material: Steel, unperforated, 2.3 mm thick, height 15 mm, width 35 mm, length: 2 m
0204071	STL 10/ 5	Step bracket, 2-pos.
0204110	STL 10N/5N	Step bracket, 2-pos.
0204107	STL 35/ 5	Step bracket, 2-pos.
1302215	TS-K	Separating plate, for electrical separation of neighboring bridges, can be fitted later, no loss of pitch, color: Gray
2303608	ZSR	Distance piece, metal, for branches of FB-150, with screw and thrust washer
0200017	ZSR-EX	Distance piece, metal, for branches of FB-150, with screw and thrust washer

Bridges

0201155	EB 2- 6	Insertion bridge, 2-pos., fully insulated
0201142	EB 3- 6	Insertion bridge, 3-pos., fully insulated
0201139	EB 10- 6	Insertion bridge, 10-pos., divisible, fully insulated
0201456	FB 2- 6-EX	Fixed bridge, for cross connections, with screws, screw heads without insulation, 2-pos.
0201469	FB 3- 6-EX	Fixed bridge, 3-pos.
0201029	FB 5- 6	Fixed bridge, for cross connections, with screws, screw heads without insulation, 5-pos.
0201184	FB 10- 6	Fixed bridge, 10-pos., divisible, with screws, screw heads without insulation
0201281	FB 10- 6-EX	Fixed bridge, 10-pos.
0201524	FB 100- 6	Fixed bridge, 100-pos.
0203438	FBI 2- 6	Fixed bridge, for cross connections, with screws, screw heads without insulation, 2-pos.
0203250	FBI 10- 6	Fixed bridge, 10-pos., screw heads with insulating collar, divisible, with screws
0201650	FBI 100- 6	Fixed bridge, 100-pos.
0201867	FBI 20- 6	Fixed bridge, 20-pos.
1302338	IS-K 4	Bridge bar isolator, as distance piece
0301505	ISSBI 10- 6	Isolator bridge bar, 10-position, divisible, with screws, for switchable branches

0201485	KB- 6-EX	Chain bridge, across any number of terminal blocks, 1-pos., with screw
0202280	LB 10-6 BU	L-bridge, 10-position, screw with blue insulation material
0202358	LB 10-6 GY	L-bridge, 10-position, screw with gray insulation material
0202293	LB 10-6 RD	L-bridge, 10-position, screw with red insulation material
0202303	LB 100-6 BU	L-bridge, 100-position, screw with blue insulation material
0202345	LB 100-6 GY	L-bridge, 100-position, screw with gray insulation material
0202316	LB 100-6 RD	L-bridge, 100-position, screw with red insulation material
2303239	USBR 2-7	Switching bridge, 2-pos.
2305538	USBRJ 2-7	Switching bridge, for bridged terminal groups, 2-pos.

Marking

1007222	SBS 6:UNBEDRUCKT	Marker cards for modular terminal blocks, color: white
1004115	WS 3- 6	Warning plate, with 2 plastic screws, across 3 terminal blocks, pitch 6 mm
1004209	WS 4- 6	Warning plate, with 2 plastic screws, across 4 terminal blocks, pitch 6 mm
1004403	WS 5- 6	Warning plate, with 2 plastic screws, across 5 terminal blocks, pitch 6 mm
1050499	ZB 6:SO/CMS	Zack strip, 10-section, divisible, special printing, marking according to customer requirements

Plug/Adapter

0309523	KSS 3- 6	Short circuit connector, for short circuiting neighboring terminal blocks, can only be used with PSB or PSBJ, 3-pos., pitch: 6.2 mm, color: Black
0301547	KSS 6	Short circuit connector, for short circuiting neighboring terminal blocks, can only be used with PSB or PSBJ, 2-pos., pitch: 6.2 mm, color: Black
0201744	MPS-MT	Test plug, consisting of: Metal part for 2.3 mm diameter socket hole
3000214	PAD-LOE/ 5N GY	Connector, color: gray
3001132	PS-UK 2,5 B/E	Individual test plug, 5 mm wide, 1-pos., can be aligned as desired
3001239	PS-UK 2,5 B/Z-6	Modular test plug, 6.2 mm wide, set of 10 with locking latch and connecting pin, interlockable as desired
3001462	PS-UK 3-5/Z-6	Test plug
0601292	PSB 3/10/4	Test plug socket, not insulated, length: 10 mm, screw thread width: 3 mm, socket width: 4 mm
0201304	PSBJ 3/13/4	Test plug socket, insulated, length: 13 mm, screw thread width: 3 mm, socket width: 4 mm, insulation material transparent
0201647	RPS	Reducing plug, for transition from 4 mm diameter test plug socket, insulation: gray