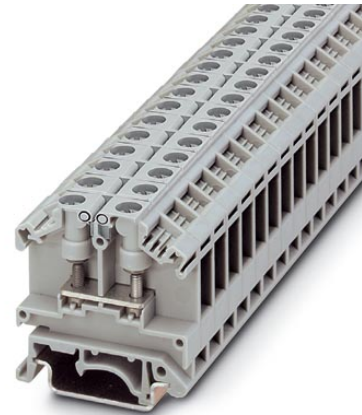


OTTA 2,5

Order No.: 0790530

<http://eshop.phoenixcontact.de/phoenix/treeViewClick.do?UID=0790530>

Universal terminal block with bolt connection, cross section: 0.1 - 2.5 mm², width: 9 mm, color: Gray

Commercial data

| | |
|--------------------------|--------------------|
| EAN | 4017918005641 |
| Pack | 50 Pcs. |
| Customs tariff | 85369010 |
| Weight/Piece | 0.012545 KG |
| Catalog page information | Page 330 (CL-2005) |

Product notes

WEEE/RoHS-compliant since:
01/01/2003



<http://www.download.phoenixcontact.com>
Please note that the data given here has been taken from the online catalog. For comprehensive information and data, please refer to the user documentation. The General Terms and Conditions of Use apply to Internet downloads.

Technical data

General

| | |
|-----------------------|------|
| Number of levels | 1 |
| Number of connections | 2 |
| Color | gray |

| | |
|------------------------------------|----|
| Insulating material | PA |
| Inflammability class acc. to UL 94 | V0 |

Dimensions

| | |
|------------------|---------|
| Length | 43.5 mm |
| Width | 9 mm |
| Height NS 35/7,5 | 45.5 mm |
| Height NS 35/15 | 53 mm |
| Height NS 32 | 50.5 mm |

Technical data

| | |
|----------------------------------|---|
| Rated surge voltage | 8 kV |
| Pollution degree | 3 |
| Surge voltage category | III |
| Insulating material group | I |
| Connection in acc. with standard | IEC 60947-7-1 |
| Nominal current I_N | 24 A |
| Nominal voltage U_N | 800 V (the nominal voltage applies to insulated cable lugs) |

Connection data

| | |
|--|-------------------------------|
| Conductor cross section stranded min. | 0.1 mm ² |
| Conductor cross section stranded max. | 2.5 mm ² |
| Conductor cross section AWG/kcmil min. | 26 |
| Conductor cross section AWG/kcmil max | 14 |
| Type of connection | Special and hybrid connection |
| Screw thread | M 3 |
| Tightening torque, min | 0.6 Nm |
| Tightening torque max | 0.8 Nm |

Certificates / Approvals

Approval logo



CSA

| | |
|-----------------------|-------|
| Nominal voltage U_N | 600 V |
|-----------------------|-------|

| | |
|-----------------------|-------|
| Nominal current I_N | 20 A |
| AWG/kcmil | 22-14 |

UL

| | |
|-----------------------|----------------------|
| Nominal voltage U_N | 600 V |
| Nominal current I_N | 20 A |
| Certification | CSA, GL, LR, PRS, UL |

Accessories

| Item | Designation | Description |
|------|-------------|-------------|
|------|-------------|-------------|

Assembly

| | | |
|---------|-------------------------------|---|
| 0790572 | ATP-OTTA 2,5 | Separating plate, width: 1.5 mm, color: gray |
| 3022218 | CLIPFIX 35 | Snap-on end bracket, for 35 mm NS 35/7.5 or NS 35/15 mounting rail, can be fitted with Zack strip ZB 8 and ZB 8/27, terminal strip marker KLM 2 and KLM, width: 9.5 mm, color: gray |
| 0790569 | D-OTTA 2,5 | Cover, width: 1.5 mm, color: gray |
| 1201442 | E/UK | End clamp, for supporting the electronic base. If mounted vertically, 2 end clamps are required in each case |
| 1201028 | NS 32 AL UNPERF 2000MM | G rail 32 mm (NS 32) |
| 1201280 | NS 32 CU/120QMM UNPERF 2000MM | G-profile DIN rail, deep-drawn, material: Copper, unperforated, height 15 mm, width 32 mm, length 2 m |
| 1201358 | NS 32 CU/35QMM UNPERF 2000MM | G-profile DIN rail, material: Copper, unperforated, height 15 mm, width 32 mm, length 2 m |
| 1201002 | NS 32 PERF 2000MM | G-profile DIN rail, material: Steel, perforated, height 15 mm, width 32 mm, length 2 m |
| 1201015 | NS 32 UNPERF 2000MM | G-profile DIN rail, material: Steel, unperforated, height 15 mm, width 32 mm, length 2 m |
| 0801762 | NS 35/ 7,5 CU UNPERF 2000MM | DIN rail, material: Copper, unperforated, height 7.5 mm, width 35 mm, length: 2 m |
| 0801733 | NS 35/ 7,5 PERF 2000MM | DIN rail, material: Steel, perforated, height 7.5 mm, width 35 mm, length: 2 m |
| 0801681 | NS 35/ 7,5 UNPERF 2000MM | DIN rail, material: Steel, unperforated, height 7.5 mm, width 35 mm, length: 2 m |
| 1201756 | NS 35/15 AL UNPERF 2000MM | DIN rail, deep-drawn, high profile, unperforated, 1.5 mm thick, material: Aluminum, height 15 mm, width 35 mm, length 2 m |
| 1201895 | NS 35/15 CU UNPERF 2000MM | DIN rail, material: Copper, unperforated, 1.5 mm thick, height 15 mm, width 35 mm, length: 2 m |
| 1201730 | NS 35/15 PERF 2000MM | DIN rail, material: Steel, perforated, height 15 mm, width 35 mm, length: 2 m |

| | | |
|---------|----------------------------|---|
| 1201714 | NS 35/15 UNPERF 2000MM | DIN rail, material: Steel, unperforated, height 15 mm, width 35 mm, length: 2 m |
| 1201798 | NS 35/15-2,3 UNPERF 2000MM | DIN rail, material: Steel, unperforated, 2.3 mm thick, height 15 mm, width 35 mm, length: 2 m |

Bridges

| | | |
|---------|----------------|---|
| 3026065 | EB 2-OTTA 2,5 | Insertion bridge, 2-pos., divisible, fully insulated |
| 3026078 | EB 3-OTTA 2,5 | Insertion bridge, 3-pos., divisible, fully insulated |
| 3026081 | EB 4-OTTA 2,5 | Insertion bridge, 4-pos., divisible, fully insulated |
| 3026094 | EB 5-OTTA 2,5 | Insertion bridge, 5-pos., divisible, fully insulated |
| 3026104 | EB 6-OTTA 2,5 | Insertion bridge, 6-pos., divisible, fully insulated |
| 3026117 | EB 7-OTTA 2,5 | Insertion bridge, 7-pos., divisible, fully insulated |
| 3026120 | EB 10-OTTA 2,5 | Insertion bridge, 10-pos., divisible, fully insulated |

Marking

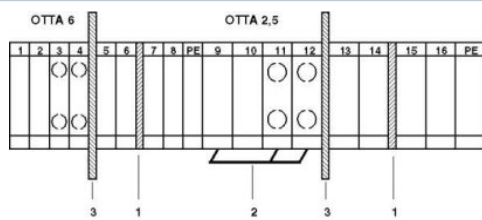
| | | |
|---------|-------------|---|
| 1050512 | ZB 8:SO/CMS | Zack strip, 10-section, divisible, special printing, marking according to customer requirements |
|---------|-------------|---|

Tools

| | | |
|---------|-------------|--|
| 1205053 | SZS 0,6X3,5 | Screwdriver, bladed, matches all screw terminal blocks up to 4.0 mm ² connection cross section, blade: 0.6 x 3.5 mm, without VDE approval |
|---------|-------------|--|

Drawings

Circuit diagram



- 1 = cover
- 2 = insertion bridge
- 3 = partition plate