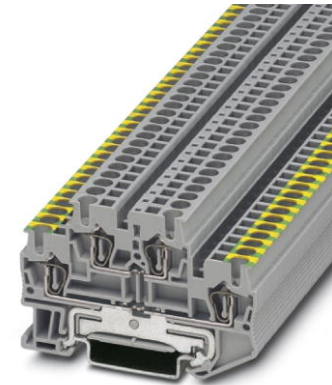


# STTB 2,5-PE/L

Order No.: 3036314



<http://eshop.phoenixcontact.de/phoenix/treeViewClick.do?UID=3036314>

Double-level terminal blocks with a spring-cage connection, cross section: 0.08 mm<sup>2</sup> - 2.5 mm<sup>2</sup>, width: 5.2 mm, color: Gray

Commercial data	
EAN	4017918823122
Pack	50 Pcs.
Customs tariff	85369010
Weight/Piece	0.0144 KG
Catalog page information	Page 84 (CL-2007)

#### Product notes

WEEE/RoHS-compliant since: 01/01/2005



<http://www.download.phoenixcontact.com>  
Please note that the data given here has been taken from the online catalog. For comprehensive information and data, please refer to the user documentation. The General Terms and Conditions of Use apply to Internet downloads.

Technical data	
<b>General</b>	
Number of levels	2
Number of connections	4
Color	gray
Insulating material	PV
Inflammability class acc. to UL 94	V0

**Dimensions**

Width	5.2 mm
Length	67.5 mm
Height NS 35/7,5	47.5 mm
Height NS 35/15	55 mm

**Technical data**

Rated surge voltage	6 kV
Pollution degree	3
Surge voltage category	III
Insulating material group	I
Connection in acc. with standard	IEC 60 947-7-1 / IEC 60 947-7-2
Nominal current $I_N$	32 A
Nominal voltage $U_N$	500 V

**Connection data**

Conductor cross section solid min.	0.08 mm <sup>2</sup>
Conductor cross section solid max.	4 mm <sup>2</sup>
Conductor cross section stranded min.	0.08 mm <sup>2</sup>
Conductor cross section stranded max.	2.5 mm <sup>2</sup>
Conductor cross section AWG/kcmil min.	28
Conductor cross section AWG/kcmil max	12
Conductor cross section stranded, with ferrule without plastic sleeve min.	0.25 mm <sup>2</sup>
Conductor cross section stranded, with ferrule without plastic sleeve max.	2.5 mm <sup>2</sup>
Conductor cross section stranded, with ferrule with plastic sleeve min.	0.25 mm <sup>2</sup>
Conductor cross section stranded, with ferrule with plastic sleeve max.	2.5 mm <sup>2</sup>
2 conductors with same cross section, stranded, TWIN ferrules with plastic sleeve, max.	0.5 mm <sup>2</sup>
Type of connection	Spring-cage connection
Stripping length	10 mm
Internal cylindrical gage	A3

### Certificates / Approvals

Approval logo



#### CUL

Nominal voltage $U_N$	300 V
Nominal current $I_N$	20 A
AWG/kcmil	28-12

#### UL

Nominal voltage $U_N$	300 V
Nominal current $I_N$	20 A
AWG/kcmil	28-12
Certification	CB, CUL, GOST, UL, VDE-PZI

### Accessories

Item	Designation	Description
------	-------------	-------------

#### Assembly

3030747	ATP-STTB 4	Partition plate, for visual and electrical separation of terminal groups, width: 2 mm, color: gray
3030459	D-STTB 2,5	Cover, width: 2.2 mm, color: gray

#### Bridges

3030161	FBS 2-5	Plug-in bridge for cross-connections in the terminal center, 2-pos., color: Red
3030174	FBS 3-5	Plug-in bridge for cross-connections in the terminal center, 3-pos., color: Red
3030187	FBS 4-5	Plug-in bridge for cross-connections in the terminal center, 4-pos., color: Red
3030190	FBS 5-5	Plug-in bridge for cross-connections in the terminal center, 5-pos., color: Red
3030213	FBS 10-5	Plug-in bridge for cross-connections in the terminal center, 10-pos., color: Red
3030226	FBS 20-5	Plug-in bridge for cross-connections in the terminal center, 20-pos., color: Red
3038930	FBS 50-5	Plug-in bridge for cross-connections in the terminal center, 50-pos., color: Red

### Marking

0800967	STP 5-2	Double marker carrier, snaps onto the double-level spring-cage terminal block STTB 2.5 and STTB 4, labeled with ZB 5 or ZBF 5
3030941	WST 2,5	Warning cover, 5-pos., for terminal width: 5.2 mm
0807180	ZBFM 5/OG:UNBEDRUCKT	Zack marker sheet, flat, unprinted: 120-section, 10 strips à 12 markers, sufficient for 120 terminal blocks, for all terminal blocks, pitch 5.2 mm, labeling with M-PEN or CMS system, color: orange
0803595	ZBFM 5/WH:UNBEDRUCKT	Zack marker sheet, flat, unprinted: 120-section, 10 strips à 12 markers, sufficient for 120 terminal blocks, for all terminal blocks, pitch 5.2 mm, labeling with M-PEN or CMS system, color: white
0803647	ZBFM 5/SO/CMS	Special printing, Zack marker sheet, flat, 120-section, divisible, marking according to customer requirements

### Plug/Adapter

3002843	ISH 2,5/0,2	Insulation stop sleeve, color: White
3002856	ISH 2,5/0,5	Insulation stop sleeve, color: gray
3002869	ISH 2,5/1,0	Insulation stop sleeve, color: black
3030925	PAI-4	Test adapter, for 4 mm diameter test plug PS and safety test plug, makes contact in the bridge shaft
3030983	PS-5	Modular test plug, for individual assembly of test plug strips, for UT, ST, DT and QT terminal blocks, can be labeled with ZBF 5, color: Red

### Tools

1204517	SZF 1-0,6X3,5	Screwdriver, blade: 0.6 x 3.5 x 100 mm, length 180 mm
---------	---------------	---

### Drawings

Circuit diagram

