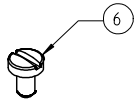
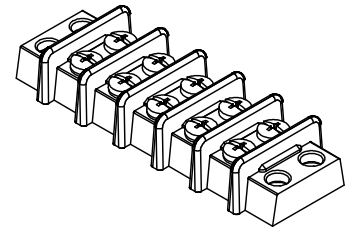
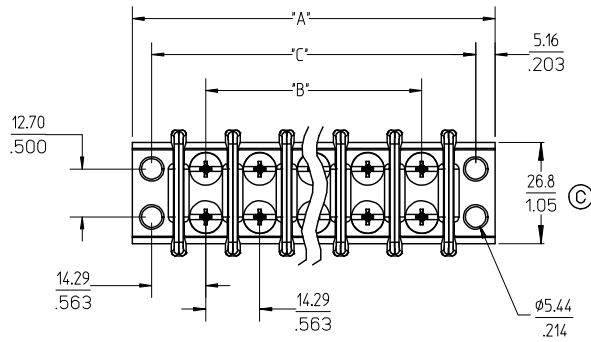


REF. -50 OPT. SCREW
(WHERE APPLICABLE)

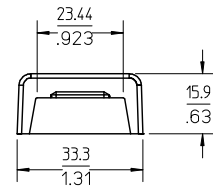
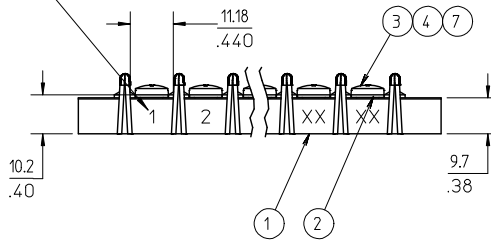


REF. -56 OPT. SCREW
(WHERE APPLICABLE)



5 CIRCUIT SHOWN

IMPRINTING FOR
OPTION -10A ONLY
(SEE NOTE 4)



NOTES

1. MATERIAL: SEE TABLE
2. FINISHES: SEE TABLE
3. PRODUCT SPECIFICATION: NOT REQUIRED
4. IMPRINTING STYLE -10A (ONE SIDE)
IMPRINT TEXT TO BE .135" HEIGHT.
5. 'XX' REFERS TO THE QUANTITY OF CIRCUITS.
6. ROHS COMPLIANT.

7	XX*2	SCREW #8-32X.312 PHLP STAINLESS (OPT-53-56)	STEEL	PASSIVATE	UPDATE DIMENSION EC NO: WNAZ009-0748 2008/09/01 DRAWN: JENC MAS 2008/09/09 CHKD: YORK 2008/09/09 APPR: JMACNEIL 2008/09/10 DESCRIPTION REV	QUALITY SYMBOLS ▽=0 ▽=0	GENERAL TOLERANCES (UNLESS SPECIFIED)		DIMENSION STYLE	SCALE	DESIGN UNITS	THIRD ANGLE PROJECTION	
6	XX*2	SCREW #8-32X.312 SLOT STAINLESS (OPT -56)	STEEL	PASSIVATE			mm	INCH	MM/IN	1:1	INCH	DRAWN BY C. YORK 2004/11/22 DATE CHECKED BY G. ROBERTSON 2004/12/01 DATE APPROVED BY G. ROBERTSON 2004/12/01 DATE MATERIAL NO. SEE CHART DOCUMENT NO. SD-38210-001 SHEET NO. 1 OF 2	
5	XX*2	SCREW #8-32X.312 PAN PHSLZN/BR/STEEL -50	STEEL	ZN, CLEAR CHROMATE			4 PLACES ± --- ± ---	3 PLACES ± --- ± .005	2 PLACES ± 0.13 ± .01	1 PLACE ± 0.3 ± ---	ANGULAR ± 2 °		TITLE
4	XX*2	SCREW #8-32X.312 BHD PHSLN/BRASS -49	BRASS	NICKEL PLATE			DRAFT WHERE APPLICABLE MUST REMAIN WITHIN DIMENSIONS		SIZE	THIS DRAWING CONTAINS INFORMATION THAT IS PROPRIETARY TO MOLEX INCORPORATED AND SHOULD NOT BE USED WITHOUT WRITTEN PERMISSION			
3	XX*2	SCREW, #8-32 X .312, BHD, PHIL-SLOT	STEEL	ZN, CLEAR CHROMATE							14.29MM [.563] DOUBLE ROW PHENOLIC BTS ASSEMBLY MOLEX INCORPORATED		
2	XX	TERMINAL, EYELET, TWIN	BRASS	NICKEL PLATE									
1	1	INSULATOR, AS CUT	PHENOLIC	BLACK									
ITEM	QTY.	DESCRIPTION	MATERIAL	FINISH									

10 9 8 7 6 5 4 3 2 38210

QTY. OF CIRC. "XX"	DIM. "A"	DIM. "B"	DIM. "C"	MATERIAL NO. (STANDARD)	MATERIAL NO. (-49 OPTION)	MATERIAL NO. (-50 OPTION)	MATERIAL NO. (-59 OPTION)	MATERIAL NO. (-49-59 OPTION)	MATERIAL NO. (-56 OPTION)	MATERIAL NO. (-53-56 OPTION)	MATERIAL NO. (-10A OPTION)	MATERIAL NO. (-10A-49 OPTION)	MATERIAL NO. (-10A-50 OPTION)
02	53.2 [2.09]	14.29 [5.63]	42.8 [1.69]	382100102	382100202	382100302	382190067	382190247	382190191	382190063	382100502	- - -	- - -
03	67.5 [2.66]	28.58 [1.125]	57.1 [2.25]	382100103	382100203	382100303	382190069	382190248	382190057	382190195	382100503	- - -	- - -
04	81.7 [3.22]	42.86 [1.688]	71.4 [2.81]	382100104	382100204	382100304	382190080	382190083	382190081	- - -	382100504	- - -	- - -
05	96.0 [3.78]	57.15 [2.250]	85.7 [3.38]	382100105	382100205	382100305	382190090	382190092	382190132	- - -	382100505	- - -	- - -
06	110.3 [4.34]	71.44 [2.813]	100.0 [3.94]	382100106	382100206	382100306	382190109	382190110	382190221	- - -	382100506	382190155	382190156
07	124.6 [4.91]	85.73 [3.375]	114.3 [4.50]	382100107	382100207	382100307	382190200	382190130	382190203	382190129	382100507	- - -	- - -
08	138.9 [5.47]	100.01 [3.938]	128.5 [5.06]	382100108	382100208	382100308	382190011	- - -	382190010	- - -	382100508	- - -	- - -
09	153.2 [6.03]	114.30 [4.500]	142.8 [5.63]	382100109	382100209	382100309	- - -	- - -	382190192	- - -	382100509	- - -	- - -
10	167.5 [6.59]	128.59 [5.063]	157.1 [6.19]	382100110	382100210	382100310	382190202	382190020	382190022	- - -	382100510	- - -	- - -
11	181.8 [7.16]	142.88 [5.625]	171.4 [6.75]	382100111	382100211	382100311	382190047	- - -	382190255	- - -	382100511	- - -	- - -
12	196.0 [7.72]	157.16 [6.188]	185.7 [7.31]	382100112	382100212	382100312	382190030	- - -	382190056	- - -	382100512	- - -	- - -
13	210.3 [8.28]	171.45 [6.750]	200.0 [7.88]	382100113	382100213	382100313	- - -	- - -	- - -	- - -	382100513	- - -	- - -
14	224.6 [8.84]	185.74 [7.313]	214.3 [8.44]	382100114	382100214	382100314	- - -	- - -	- - -	382190032	382100514	- - -	- - -
15	238.9 [9.41]	200.03 [7.875]	228.6 [9.00]	382100115	382100215	382100315	- - -	- - -	- - -	- - -	382100515	- - -	- - -
16	253.2 [9.97]	214.31 [8.438]	242.8 [9.56]	382100116	382100216	382100316	- - -	- - -	382190254	- - -	382100516	- - -	- - -
17	267.5 [10.53]	228.60 [9.000]	257.1 [10.13]	382100117	382100217	382100317	- - -	- - -	- - -	- - -	382100517	- - -	- - -
18	281.8 [11.09]	242.89 [9.563]	271.4 [10.69]	382100118	382100218	382100318	- - -	- - -	382190198	- - -	382100518	- - -	- - -
19	296.1 [11.66]	257.18 [10.125]	285.7 [11.25]	382100119	382100219	382100319	- - -	- - -	- - -	- - -	382100519	- - -	- - -
20	310.3 [12.22]	271.46 [10.688]	300.0 [11.81]	382100120	382100220	382100320	- - -	- - -	- - -	- - -	382100520	- - -	- - -
21	324.6 [12.78]	285.75 [11.250]	314.3 [12.38]	382100121	382100221	382100321	- - -	- - -	- - -	- - -	382100521	- - -	- - -
22	338.9 [13.34]	300.04 [11.813]	328.6 [12.94]	382100122	382100222	382100322	- - -	- - -	- - -	- - -	382100522	- - -	- - -
23	353.2 [13.91]	314.33 [12.375]	342.9 [13.50]	382100123	382100223	382100323	- - -	- - -	- - -	- - -	382100523	- - -	- - -
24	367.5 [14.47]	328.61 [12.938]	357.1 [14.06]	382100124	382100224	382100324	- - -	- - -	- - -	- - -	382100524	- - -	- - -
25	381.8 [15.03]	342.90 [13.500]	371.4 [14.63]	382100125	382100225	382100325	- - -	- - -	- - -	- - -	382100525	- - -	- - -
26	396.1 [15.59]	357.19 [14.063]	385.7 [15.19]	382100126	382100226	382100326	- - -	- - -	- - -	- - -	382100526	- - -	- - -
27	410.4 [16.16]	371.48 [14.625]	400.0 [15.75]	382100127	382100227	382100327	- - -	- - -	- - -	- - -	382100527	- - -	- - -
28	424.7 [16.72]	385.77 [15.188]	414.3 [16.31]	382100128	382100228	382100328	- - -	- - -	- - -	- - -	382100528	- - -	- - -
29	439.0 [17.28]	400.06 [15.750]	428.6 [16.87]	382100129	382100229	382100329	- - -	- - -	- - -	- - -	382100529	- - -	- - -
30	453.3 [17.85]	414.35 [16.313]	442.9 [17.44]	382100130	382100230	382100330	- - -	- - -	- - -	- - -	382100530	- - -	- - -

SEE SHEET 1 EC NO: WNA2009-0148 DRAWN: ENC MAS CHECKED: YORK APPR: JACNEILL 2008.09.01 2008.09.09 2008.09.10	QUALITY SYMBOLS	GENERAL TOLERANCES (UNLESS SPECIFIED)	DIMENSION STYLE	SCALE	DESIGN UNITS	THIRD ANGLE PROJECTION
	$\nabla=0$ $\nabla=0$	mm INCH 4 PLACES ± --- ± --- 3 PLACES ± --- ± .005 2 PLACES ± 0.13 ± .01 1 PLACE ± 0.3 ± --- ANGULAR ± 2 °	MM/IN	1:1	INCH	DRAWN BY DATE C. YORK 2004/11/22 CHECKED BY DATE G. ROBERTSON 2004/12/01 APPROVED BY DATE G. ROBERTSON 2004/12/01
	DESCRIPTION	DRAFT WHERE APPLICABLE MUST REMAIN WITHIN DIMENSIONS	SEE CHART	TITLE	14.29MM [.563] DOUBLE ROW PHENOLIC BTS ASSEMBLY MOLEX INCORPORATED	
				MATERIAL NO.	DOCUMENT NO.	SHEET NO.
			SD-38210-001		2 OF 2	
			THIS DRAWING CONTAINS INFORMATION THAT IS PROPRIETARY TO MOLEX INCORPORATED AND SHOULD NOT BE USED WITHOUT WRITTEN PERMISSION			

lb_frame_B_P_ME_1
Rev. D 2004/04/02

9 8 7 6 5 4 3 2 1