

Switch Language

English

Need Assistance?

- [Contact Us](#)
- [Find a Distributor](#)
- [Order Samples](#)
- [Tech Library](#)

[Printer-friendly page](#)

[Email this page](#)

[Home](#) [Terminal Blocks](#) [Datasheet](#)

Part Number: 0391001012

Status: Active

Description: 10.00mm (.394") Pitch Beau™ Eurostyle™ Two-Screw Terminal Strips, 12 Circuits

Documents:

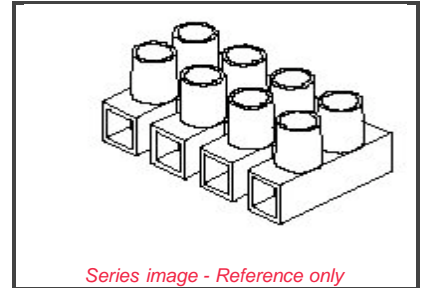
Note - Please disable browser pop-up blockers for documents on www.molex.com

[Drawing \(PDF\)](#)

[3D Model](#)

[Product Literature \(PDF\)](#)

[Related Catalog Page \(PDF\)](#)



Order Products:

[Check Distributor Inventory](#)

[Add to My Parts](#)

[Request Samples](#)

Part Detail: ([show all](#))

[General](#) [Physical](#) [Electrical](#) [Material Info](#)

General

Product Family	Terminal Blocks
Series	39100
Application	Wire-to-Wire
Component Type	One Piece
Product Name	Eurostyle™ Two Screw
Type	Euro Block

Physical

Circuits (Loaded)	12
Entry Angle	Horizontal
Lock to Mating Part	None
Number of Rows	2
Orientation	Vertical
PCB Retention	Yes
Panel Mount	Mounting Holes Between Circuit
Pitch - Mating Interface (in)	0.394 In
Pitch - Mating Interface (mm)	10.00 mm
Pitch - Term. Interface (in)	0.315 In
Pitch - Term. Interface (mm)	8.00 mm
Polarized to Mating Part	No
Stackable	No
Temperature Range - Operating	100°C
Wire Size AWG	10
Wire Size AWG	12
Wire Size AWG	14
Wire Size AWG	16
Wire Size AWG	18

Electrical

Current - Maximum	30.000 Amp
Voltage - Maximum	600V

Material Info

EU RoHS

ELV and RoHS Compliant

China RoHS



Need more information on product compliance?

Email productcompliance@molex.com

Please visit the [Contact Us](#) section for any non-product compliance questions.

Search Parts in this Series

[39100](#) Series

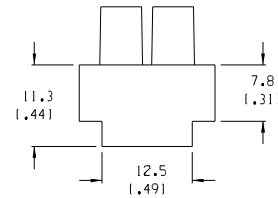
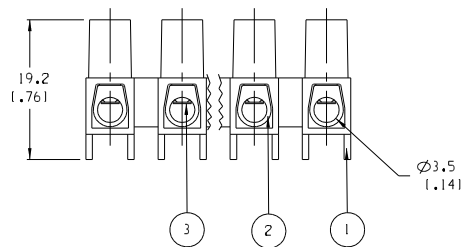
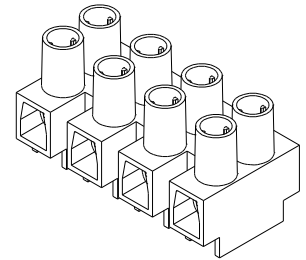
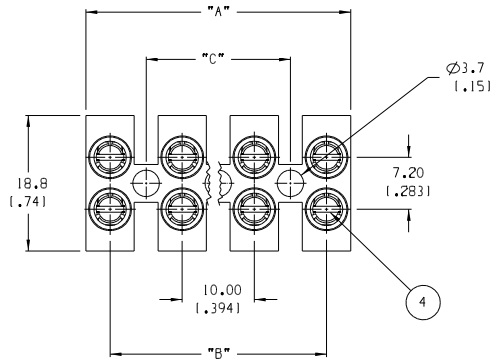
Reference - Drawing Numbers

Sales Drawing

SD-39100-004

[Feedback](#) [Privacy](#) [Legal](#) [Site Map](#) [Help](#)

Copyright 2005-2008



NUMBER OF CIRCUITS	"A" DIM.	"B" DIM.	"C" DIM.	MATERIAL NUMBER
01	7.00 (2.76)	N/A	N/A	391001001
02	17.00 (1.669)	10.00 (1.394)	N/A	391001002
03	27.00 (1.063)	20.00 (1.787)	10.00 (1.394)	391001003
04	37.00 (1.457)	30.00 (1.181)	20.00 (1.787)	391001004
05	47.00 (1.850)	40.00 (1.575)	30.00 (1.181)	391001005
06	57.00 (2.244)	50.00 (1.969)	40.00 (1.575)	391001006
07	67.00 (2.638)	60.00 (2.362)	50.00 (1.969)	391001007
08	77.00 (3.031)	70.00 (2.756)	60.00 (2.362)	391001008
09	87.00 (3.425)	80.00 (3.150)	70.00 (2.756)	391001009
10	97.00 (3.819)	90.00 (3.543)	80.00 (3.150)	391001010
11	107.00 (4.213)	100.00 (3.937)	90.00 (3.543)	391001011
12	117.00 (4.606)	110.00 (4.331)	100.00 (3.937)	391001012

- NOTES:
1. MATERIAL: SEE TABLE
 2. FINISHES: SEE TABLE
 3. PRODUCT SPECIFICATION: NOT REQUIRED
 4. PACKAGING: NOT REQUIRED
 5. MATES WITH: NONE
 6. "XX" REFERS TO THE NUMBER OF CIRCUITS

ITEM	QTY.	DESCRIPTION	MATERIAL	FINISH
4	XX*2	CLAMPING SCREWS, M3	STEEL	ZINC
3	XX	WIRE PROTECTOR	BRASS	NICKEL
2	XX	TERMINAL	BRASS	NICKEL
1	1	INSULATOR	NYLON 6	CLEAR

EC NO. RELEASED
 DRAWN: JF 09-15-04
 CHK: K1
 APPR: [Signature]

DESCRIPTION: [Signature]

QUALITY SYMBOLS: MAJOR, CRITICAL, MINOR, SPC, S

REVISION: A

GENERAL TOLERANCES (UNLESS SPECIFIED)

4 PLACES	mm	±.0015	INCH	±.005
3 PLACES	mm	±.038	INCH	±.005
2 PLACES	mm	±.13	INCH	±.01
1 PLACE	mm	±.3	INCH	±.01

ANGULAR: ±2°

DRAFT WHERE APPLICABLE MUST REMAIN WITHIN DIMENSIONS

SCALE: 2:1

DESIGN UNITS: mm INCH

THIRD ANGLE PROJECTION: mm INCH

DRAWN BY & DATE: J.FARMER 09-15-04

CHECKED BY & DATE:

APPROVED BY & DATE:

CAD FILENAME: 39100-10XX

PROJECT NO.: -

DIMENSIONS: mm INCH

REVISION ON CAD ONLY

TITLE: 10MM HIGH PROFILE WITH WIRE PROTECTOR

MOLEX INCORPORATED

MATERIAL NO.: SEE CHART

DRAWING NO.: SD-39100-004

SHEET NO.: 1 OF 1

SIZE: B

THIS DRAWING CONTAINS INFORMATION THAT IS PROPRIETARY TO MOLEX INCORPORATED AND SHOULD NOT BE USED WITHOUT WRITTEN PERMISSION.