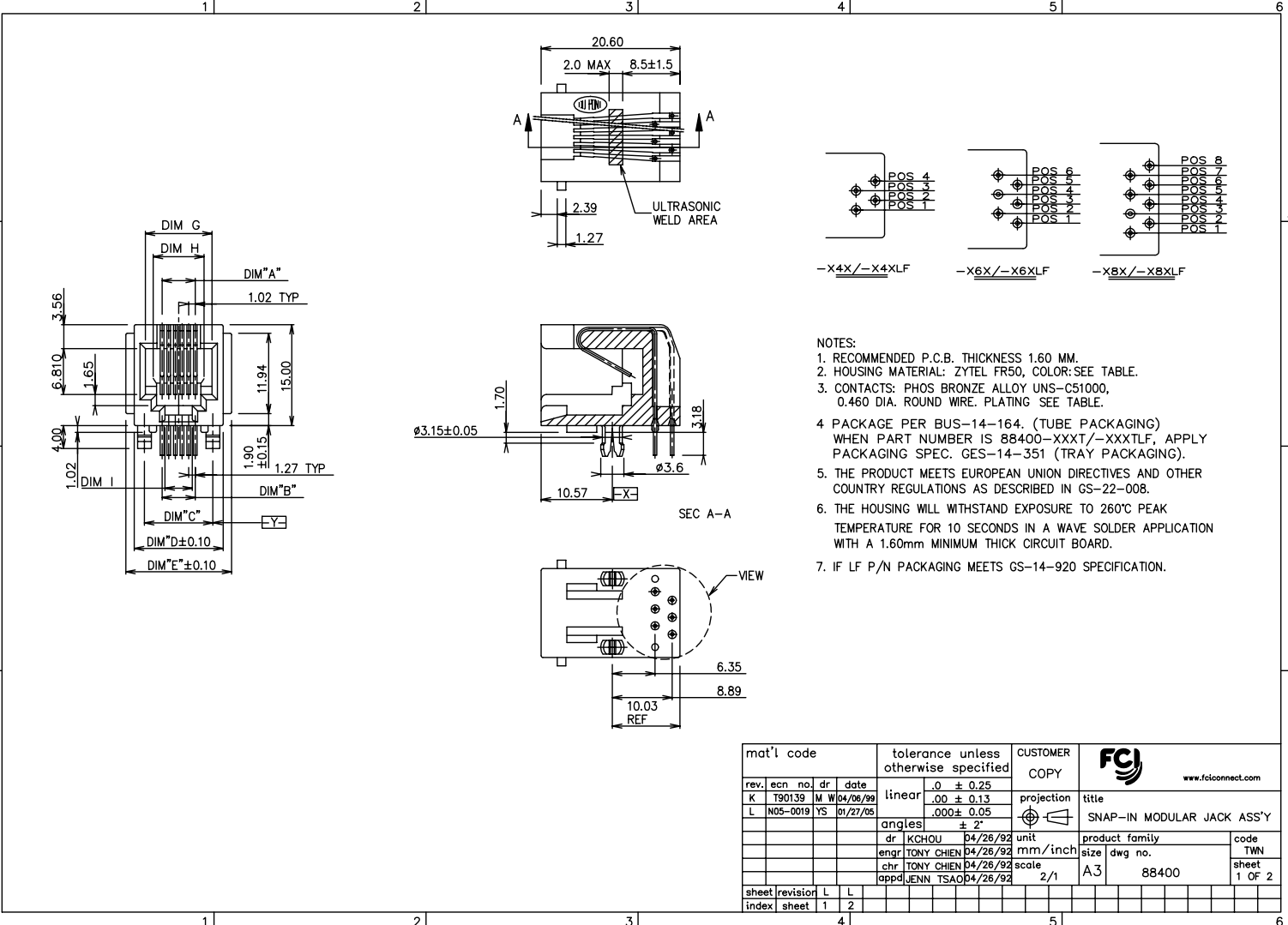


Tous droits strictement réservés. Reproduction ou communication à des tiers sans autorisation écrite du propriétaire.

All rights strictly reserved. Reproduction or communication to any third party without written authority from the proprietor.



- NOTES:
1. RECOMMENDED P.C.B. THICKNESS 1.60 MM.
 2. HOUSING MATERIAL: ZYTEL FR50, COLOR: SEE TABLE.
 3. CONTACTS: PHOS BRONZE ALLOY UNS-C51000, 0.460 DIA. ROUND WIRE. PLATING SEE TABLE.
 4. PACKAGE PER BUS-14-164. (TUBE PACKAGING) WHEN PART NUMBER IS 88400-XXXT/-XXXTLF, APPLY PACKAGING SPEC. GES-14-351 (TRAY PACKAGING).
 5. THE PRODUCT MEETS EUROPEAN UNION DIRECTIVES AND OTHER COUNTRY REGULATIONS AS DESCRIBED IN GS-22-008.
 6. THE HOUSING WILL WITHSTAND EXPOSURE TO 260°C PEAK TEMPERATURE FOR 10 SECONDS IN A WAVE SOLDER APPLICATION WITH A 1.60mm MINIMUM THICK CIRCUIT BOARD.
 7. IF LF P/N PACKAGING MEETS GS-14-920 SPECIFICATION.

mat'l code		tolerance unless otherwise specified		CUSTOMER COPY		FCI		www.fciconnect.com	
rev.	ecn no.	dr	date	linear	.0 ± 0.25	projection	title		
K	T90139	M	W04/06/99	L	.00 ± 0.13		SNAP-IN MODULAR JACK ASS'Y		
L	N05-0019	YS	01/27/05		.000 ± 0.05		product family		
				angles	± 2°	unit		code	
				dr	KCHOU	04/26/92	mm/inch		TWN
				enr	TONY CHIEN	04/26/92	size		sheet
				chr	TONY CHIEN	04/26/92	scale		1 of 2
				appd	JENN TSAO	04/26/92	A3		
sheet	revision	L	L						
index	sheet	1	2						

PDM: Rev:L STATUS:Released Printed: Dec 04, 2009

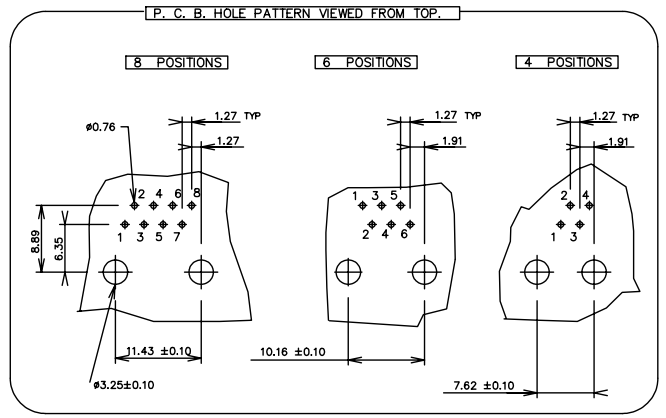
Tous droits réservés. Reproduction ou communication de cet avis sans autorisation écrite du propriétaire.
 All rights reserved. Reproduction or communication of this notice without written authority from the proprietor.
 Property of C. BERNE ELECTRONICS. Copyright BERNE ELECTRONICS by



All rights reserved. Reproduction or communication of this notice without written authority from the proprietor.
 Property of C. BERNE ELECTRONICS. Copyright BERNE ELECTRONICS by

DIM.	NO OF POS	DIM A	DIM B	DIM C	DIM D	DIM E	DIM G	DIM H	DIM I	LOADED POS	REMARK
88400-X44/-X44LF	4	3.05	3.81	7.62	11.20	13.72	7.87	5.50	3.05	ALL POS	
88400-X42/-X42LF										2,3	
88400-X66/-X66LF	6	5.08	6.35	10.16	13.20	15.72	9.906	6.60	4.06	ALL POS	
88400-X64/-X64LF										2,3,4,5	
88400-X62/-X62LF										3,4	
88400-X88/-X88LF	8	7.11	8.89	11.43	15.24	17.76				ALL POS	NOT AVAILABLE
88400-X86/-X86LF										2,3,4,5,6,7	
88400-X84/-X84LF										3,4,5,6	

PLATING & HSG COLOR CODE	PLATING	HSG COLOR
0	30 v " G.X.T.	BLACK
1	15 v " GOLD.	
2	20 v " G.F.P.D.	
3	30 v " GOLD.	
4	15 v " G.X.T.	
5	50 v " GOLD.	
6	6 v " GOLD.	
7	2 v " GOLD.	



mat'l code		tolerance unless otherwise specified		CUSTOMER		FCJ		www.fcjconnect.com	
rev.	ecn no.	dr	date	linear	.0 ± 0.25	COPY		title	
L					.00 ± 0.13	projection		SNAP-IN MODULAR JACK ASS'Y	
				angles	.000 ± 0.05	A3		product family	
				dr	± 2°	mm/inch		code	
				enr		2/1		TWN	
				chr		A3		sheet	
				appd		88400		2 Of 2	
sheet	revision								
index	sheet								

PDM: Rev:L STATUS:Released Printed: Dec 04, 2009