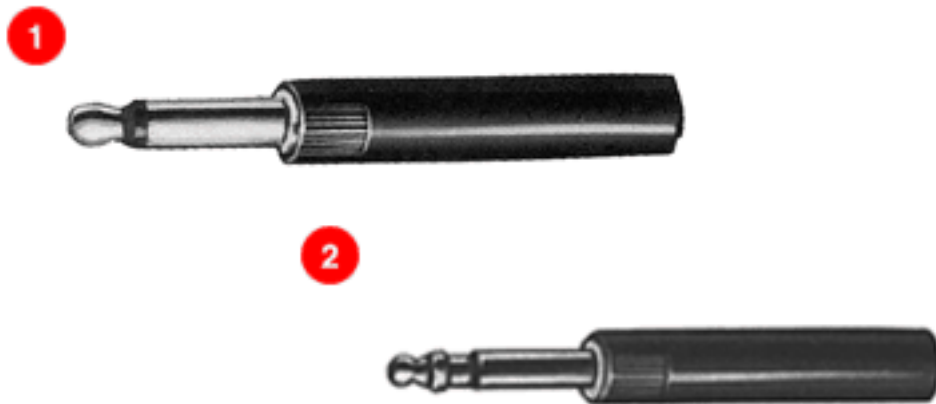


# Switchcraft®

[Previous Page](#) | [Return to Index](#) | [Next Page](#)



## **.173" MINIATURE TELEPHONE PLUGS BANTAM TYPE**

- 1. TT251 and TT252**
- 2. TT253 and TT254**

[click here to download a schematic drawing](#)

(you will need to have Adobe Acrobat installed on your system to do this)



### **FEATURES**

2- and 3-conductor miniature non-shortring telephone plugs designed for use with TT-Jax®, Unijax®, and other phone jacks with a .176 inch inside diameter bushing. Approximately 1/2 the size of standard phone plugs, yet retains the uniformity, dependability and quality of MIL-type phone plugs.

TT-Plug® Miniature Telephone Plugs are the first to offer 2- and 3-conductors in an attachable type with twist handles for quick assembly. Series TT250 phone plug is available with red or black handles. Other color handles available on special order. Also available with nickel-plated plug fingers. (Add "N" to part number: 253N, 254N)

Plugs feature a one-piece tip rod, ring and a one-piece sleeve with integral plug body, assembled together into a mold as inserts. Providing complete continuity of thermoplastic insulation between tip rod, ring and sleeve. Internal interlock of all parts prevents shifting and shorting under extreme rugged usage.

Internal 12-24 threads in end of plug body are intended for threading over outer jacket of a patch cord to provide a superior cable anchor.

Patch cords such as Switchcraft Series TT700 (or other .216 inch diameter cable) are easily attached to Series TT250 by screw terminals.

## SPECIFICATIONS

**Tip Rod, Ring, Sleeve and Body:** Copper alloy, natural finish.

**Terminals and Terminal Screws:** Copper alloy, natural finish.

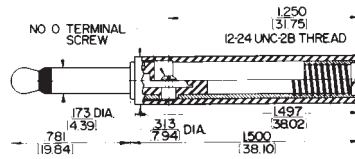
**Insulation:** Thermoplastic.

**Handle:** Molded plastic.

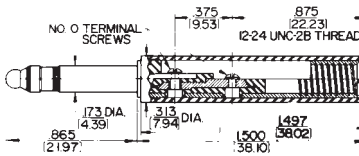
Removing handle from plug body can be easily accomplished by lightly squeezing the knurled area of the handle and twisting 30° counter-clockwise.

| Part Number | Conductors | Terminals          | Typical Mating Jack <sup>1</sup> Handle | Handle      | Handle Part Number | MIL-Type Number |
|-------------|------------|--------------------|---|-------------|--------------------|-----------------|
| TT251       | 2          | Screw <sup>2</sup> | TT31                                    | Black       | T2302              | --              |
| TT252       | 2          |                    | TT31                                    | Red         | T2315              | --              |
| TT253       | 3          |                    | TT32B                                   | Black       | T2307              | M642/13-1       |
| TT253N      | 3          |                    | TT32B                                   | Black       | T2324              | --              |
| TT254       | 3          |                    | TT32B                                   | Red         | T2301              | M642/13-2       |
| TT254N      | 3          |                    | TT32B                                   | Red         | T2325              | --              |
| 2P2003      | 3          |                    | TT32B                                   | Less Handle | --                 | --              |

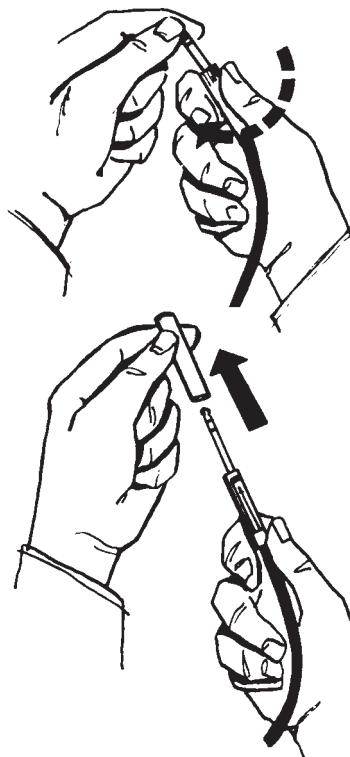
## .173" MINIATURE TELEPHONE PLUGS BANTAM TYPE



TT251 and TT252



TT253 and TT254



DIMENSIONS ARE FOR REFERENCE ONLY  $\frac{\text{Inch}}{\text{(mm)}}$

**NOTE:** Contact your Switchcraft Representative for price and delivery.