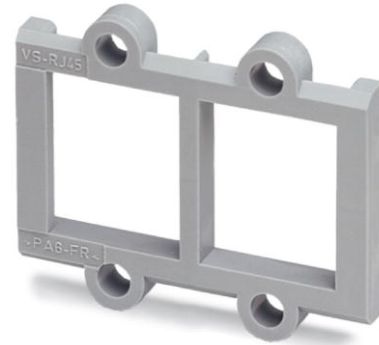


VS-08-A-RJ45/LP-2-IP 20


Order No.: 1688654



<http://eshop.phoenixcontact.de/phoenix/treeViewClick.do?UID=1688654>


RJ45 panel mounting frame, 2x, IP20, for socket inserts for PCB connection, without mounting screws

Ethernet

Commercial data	
GTIN (EAN)	 4 017918 819422
sales group	D510
Pack	5 pcs.
Customs tariff	85389099
Catalog page information	Page 169 (PC-2007)

Product notes

WEEE/RoHS-compliant since: 10/01/2005



<http://www.download.phoenixcontact.com>
Please note that the data given here has been taken from the online catalog. For comprehensive information and data, please refer to the user documentation. The General Terms and Conditions of Use apply to Internet downloads.

Technical data

Mechanical characteristics	
Number of slots	2
Color	gray
Ambient temperature (operation)	-40 °C ... 80 °C

Material data

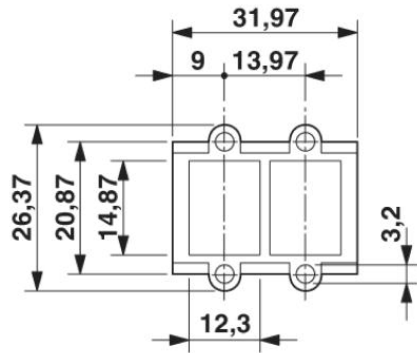
Inflammability class acc. to UL 94	V0
Housing material	PA
Material	Plastic
Degree of protection	IP20

Accessories

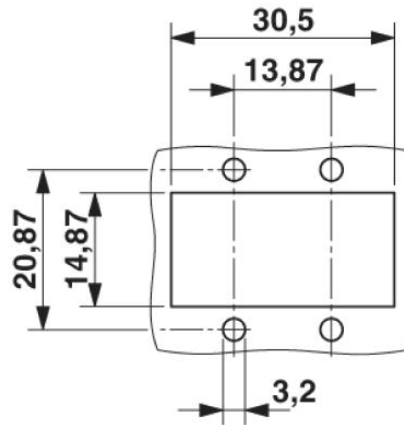
Item	Designation	Description
Female insert		
1688599	VS-08-BU-RJ45/LP-2	RJ45 socket insert, 2x, for PCB assembly, CAT5e, 8-pos., shielded, with angled solder pins

Diagrams/Drawings

Dimensioned drawing



RJ45 panel mounting frame, IP20



Panel cutout

Address

PHOENIX CONTACT Inc., USA
586 Fulling Mill Road
Middletown, PA 17057, USA
Phone (800) 888-7388
Fax (717) 944-1625
<http://www.phoenixcon.com>



© 2011 Phoenix Contact
Technical modifications reserved;