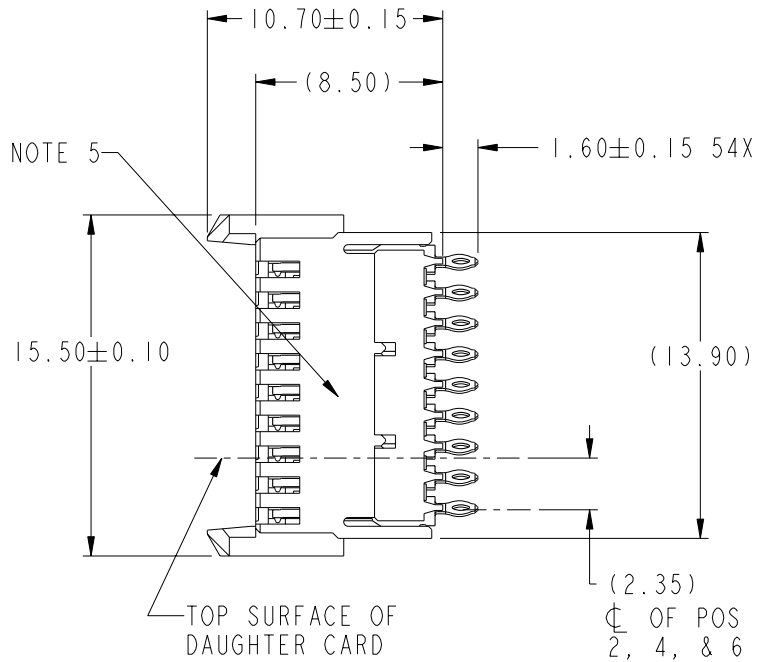
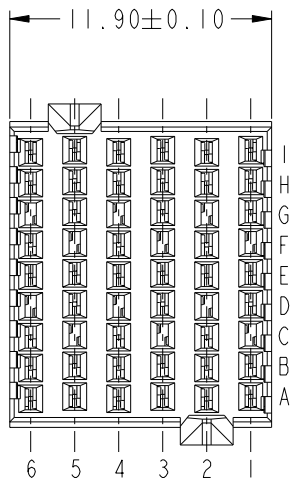


PRODUCT NUMBER
SEE TABLE, SHEET 5



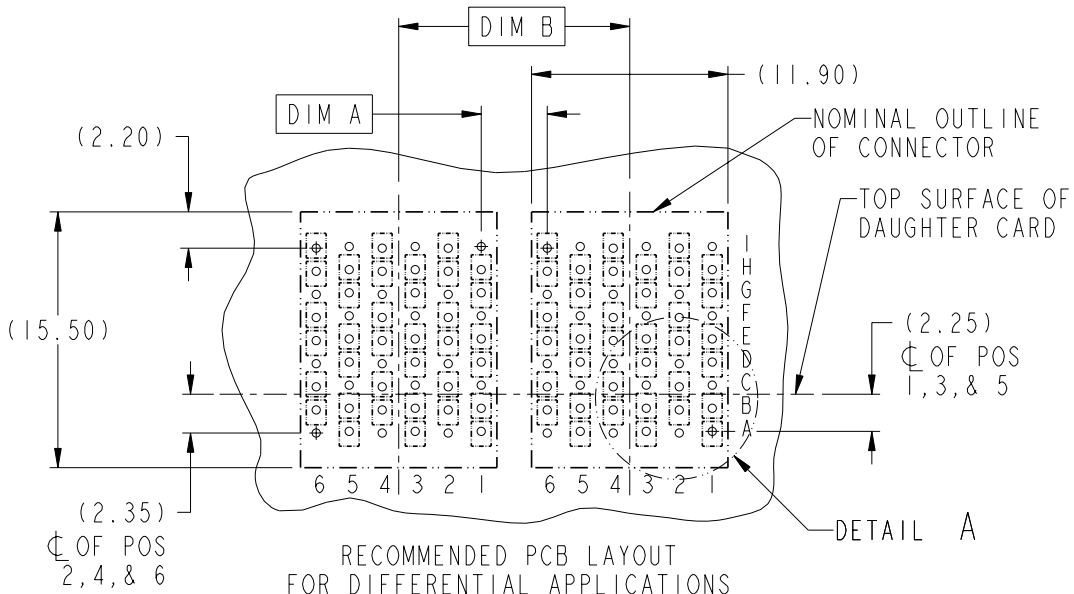
rev	ecn no	dr	date
A	V05-0461	LRJ	2006-02-24
B	S07-0043	LS	2007-02-08
-	-	-	-
-	-	-	-
-	-	-	-
-	-	-	-

www.fciconnect.com		surface	tolerance std	projection	MM
Dr G. HULL 2004-07-27		ASME Y14.5	ASME Y14.5	ASME Y14.5	Scale 4:1
Eng S. MINICH 2004-07-27		TOLERANCES UNLESS OTHERWISE SPECIFIED		size A4	***
Chr C. H. TAN 2007-02-08		ANGULAR	LINEAR	ECN	RELEASED
Appr JOEY NG 2007-02-08		0° ±	0.xxx ±	Product family AirMax VS	Spec ref
FCJ		AirMax VS VERT RECPT ASSY		part no 10043546	Rev. B
catalog no		PRESS-FIT, 54 POS, 12MM		CUSTOMER	sheet 1 of 5

REV F - 2006-04-17

PDM: Rev:B STATUS:Released 4 Printed: Dec 01, 2010

ADJACENT HEADER WIDTHS	DIM A	DIM B
12MM/12MM	2.00	12.00
12MM/14MM	3.00	13.00
14MM/14MM	4.00	14.00



RECOMMENDED PCB LAYOUT
FOR DIFFERENTIAL APPLICATIONS
COMPONENT SIDE
(TWO ADJACENT FOOTPRINTS SHOWN)
NOTES 6 & 7

	AirMax VS VERT RECPT ASSY	title	part no	Rev.
	PRESS-FIT, 54 POS, 12MM	catalog no	CUSTOMER	sheet 2 of 5

REV F - 2008-04-17

PDM: Rev:B

STATUS:Released

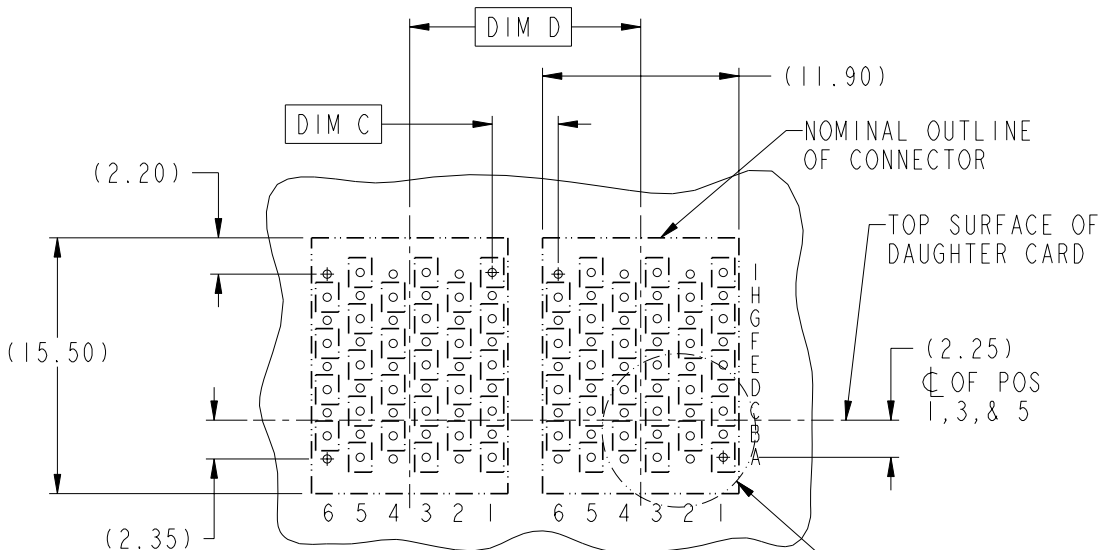
4 Printed: Dec 01, 2010

FCJ
Copyright FCJ.



Copyright FCJ.

ADJACENT HEADER WIDTHS	DIM C	DIM D
12MM/12MM	2.00	12.00
12MM/14MM	3.00	13.00
14MM/14MM	4.00	14.00



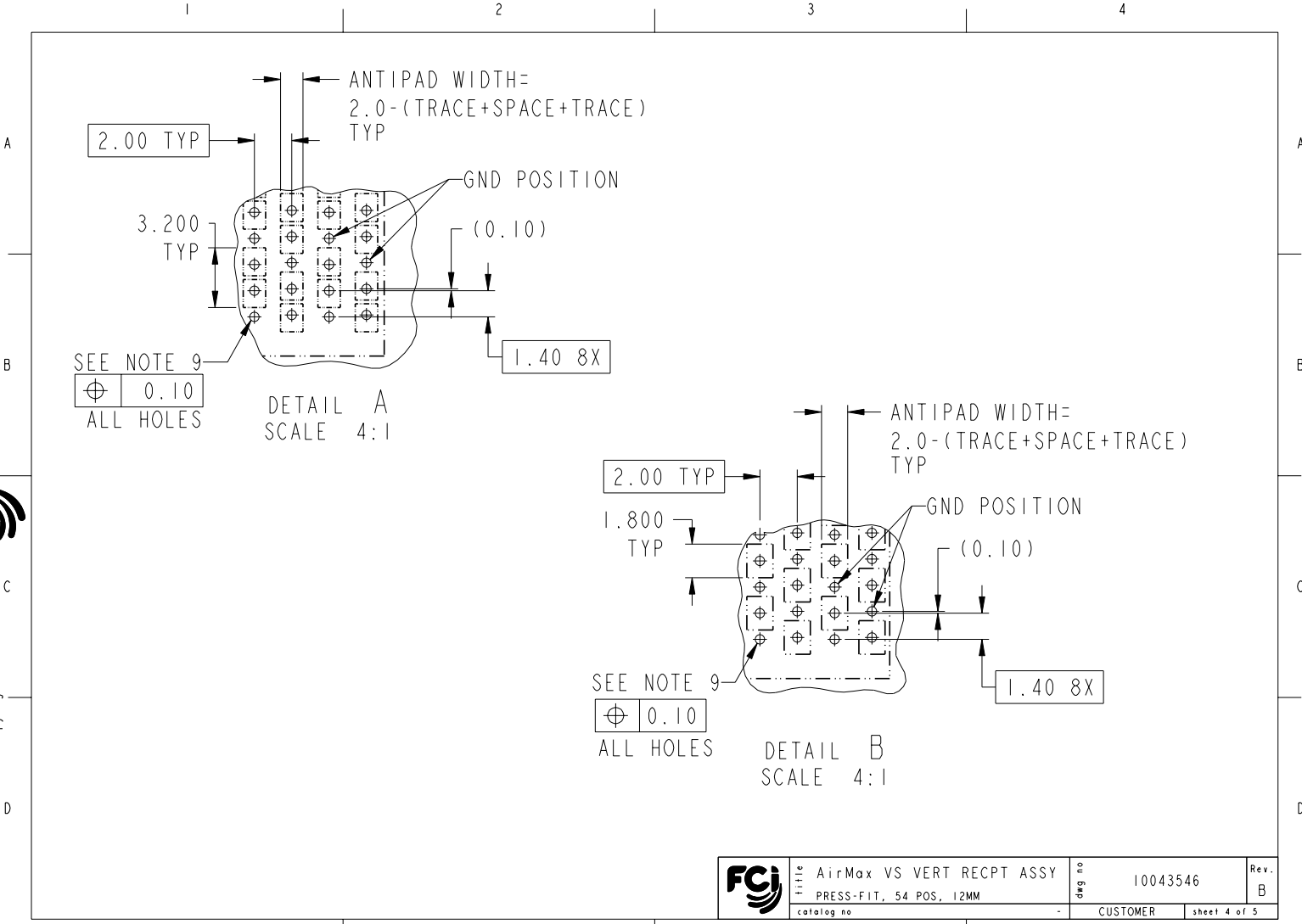
RECOMMENDED PCB LAYOUT
 FOR SINGLE ENDED APPLICATIONS
 COMPONENT SIDE
 (TWO ADJACENT FOOTPRINTS SHOWN)
 NOTES 6 & 7

	title	AirMax VS VERT RECPT ASSY	dwg no	10043546	Rev.	B
	catalog no	PRESS-FIT, 54 POS, 12MM	-	CUSTOMER	sheet	3 of 5

REV F - 2008-04-17



Copyright FCJ.



REV F - 2010-04-17

	part no	AirMax VS VERT RECPT ASSY	dwg no	10043546	Rev.	B
	catalog no	PRESS-FIT, 54 POS, 12MM		CUSTOMER	sheet	4 of 5

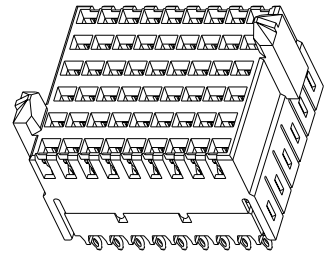
PDM: Rev:B STATUS:Released 4 Printed: Dec 01, 2010

PART NUMBER	PRESS-FIT TAIL PLATING TYPE
10043546-101	TIN/LEAD ALLOY OVER NICKEL
10043546-101LF	TIN OVER NICKEL (LEAD FREE)

NOTES:

1. CONNECTOR MATERIALS:
HOUSING & RETAINER: HIGH TEMP THERMOPLASTIC, NATURAL, UL94V-0
IMLA PLASTIC: HIGH TEMP THERMOPLASTIC, BLACK, UL94V-0
CONTACT: COPPER ALLOY
2. CONTACT PLATING:
SEPARABLE INTERFACE: PERFORMANCE-BASED PLATING, QUALIFIED TO MEET THE REQUIREMENTS OF FCI PRODUCT SPECIFICATION GS-12-239, INCLUDING TELCORDIA GR-1217-CORE (November 1995) CENTRAL OFFICE TEST SEQUENCE.

PRESS-FIT TAILS: SEE TABLE
3. PRODUCT SPECIFICATION: GS-12-239
4. APPLICATION SPECIFICATION: GS-20-035
5. PRODUCT MARKING, (PART NUMBER & LOT CODE), ON THIS SURFACE
6. REFER TO CUSTOMER DRAWING 10035911 FOR INFORMATION REGARDING PCB LAYOUT OF POWER AND GUIDE MODULES RELATIVE TO SIGNAL MODULES
7. POSITIONS F OF ODD NUMBERED COLUMNS AND POSITIONS G OF EVEN NUMBERED COLUMNS CORRESPOND TO EARLY MATE HEADER PINS
8. THERE IS NO GROUND BUSSING WITHIN THE CONNECTOR SYSTEM
9. REFER TO CUSTOMER DRAWING 10045979 FOR INFORMATION ON PCB HOLE DIAMETERS AND PLATING OPTIONS.
10. THIS PRODUCT MEETS EUROPEAN UNION DIRECTIVES AND OTHER COUNTRY REGULATIONS AS DESCRIBED IN GS-22-008.



11. THE HOUSING WILL WITHSTAND EXPOSURE TO 260°C PEAK TEMPERATURE FOR 40 SECONDS IN A CONVECTION, INFRA-RED OR VAPOR PHASE REFLOW OVEN.
12. PACKAGING MEETS GS-14-920 LEAD FREE LABELING SPECIFICATION.

FCJ	title	AirMax VS VERT RECPT ASSY	drwg no	10043546	Rev.	B
	catalog no	PRESS-FIT, 54 POS, 12MM	-	CUSTOMER	sheet	5 of 5

REV F - 2008-04-17

PDM: Rev:B

STATUS:Released

4 Printed: Dec 01, 2010

FCJ
Copyright FCI.