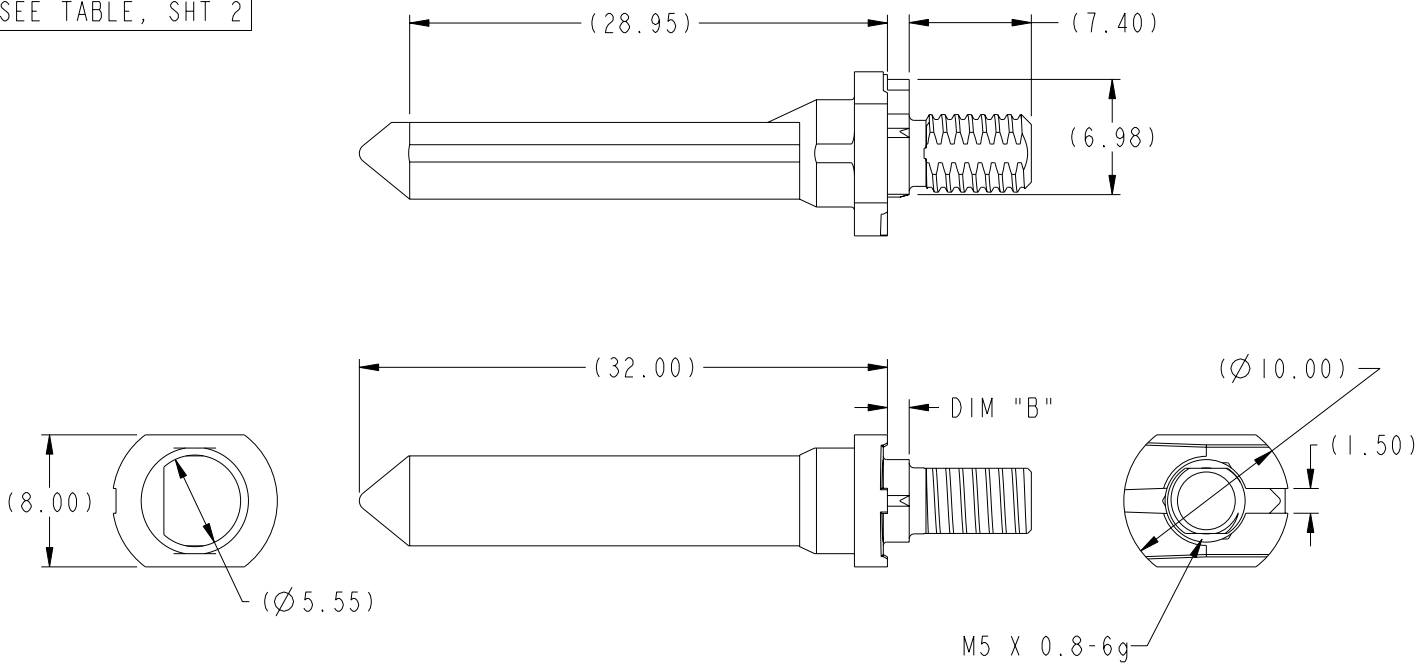




Copyright FCJ.

PRODUCT NUMBER
SEE TABLE, SHT 2



| rev | ecn no | dr | date |
|-----|----------|----|------------|
| A | V05-0103 | AR | 2005-01-27 |
| B | V05-0225 | AR | 2005-03-09 |
| C | V05-0262 | AR | 2005-03-29 |
| D | S08-0112 | CM | 2008-05-05 |
| - | - | - | - |
| - | - | - | - |

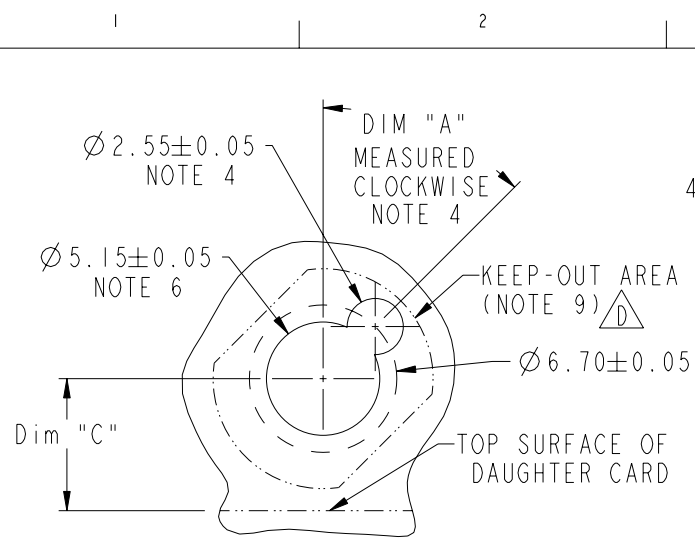
| | | | | | |
|----------------------------|--|---------------------------------------|---------------|--------------|-----------|
| www.fciconnect.com | | surface 3.200 | tolerance std | projection | MM |
| Dr A. RAISTRICK 2004-08-03 | | ASME Y14.5 | ASME Y14.5 | ASME Y14.5 | Scale 3:1 |
| Eng B. MARSHALL 2004-08-03 | | TOLERANCES UNLESS OTHERWISE SPECIFIED | | size A4 | NEW |
| Chr C. H. TAN 2008-05-05 | | ANGULAR | 0.X ±0.3 | ECN | Spec ref |
| Appr JOEY NG 2008-05-05 | | LINEAR | 0.XX ±0.10 | | |
| FCJ | | 0° ±2° | 0.XXX ±0.050 | | |
| 10.8mm GUIDE PIN, | | Product Affinity Accessories | | | |
| EXT. THREAD | | part no | 10037910 | Rev. | D |
| catalog no | | CUSTOMER | | sheet 1 of 3 | |

REV F - 2008-04-17

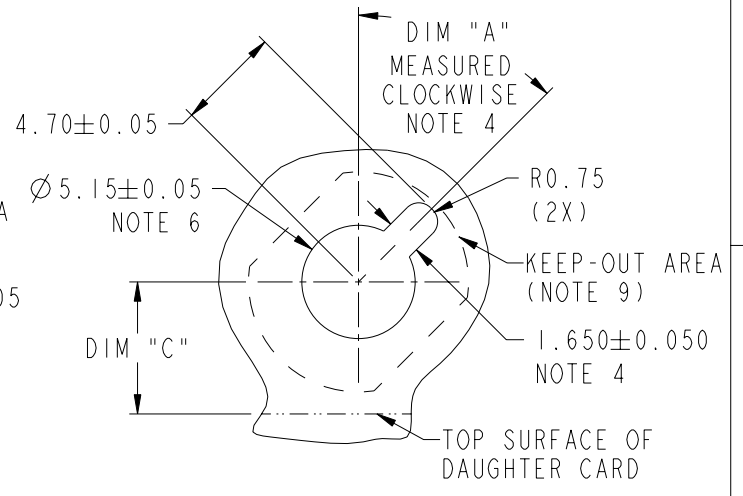
PDM: Rev:D STATUS:Released⁴ Printed: Dec 01, 2010



Copyright FCJ.



RECOMMENDED PCB LAYOUT (DRILLING)
 NOTES 4, 5 & 6
 SCALE 4:1

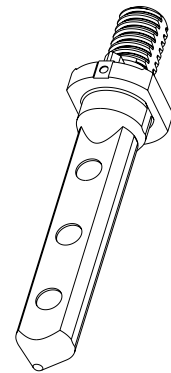





RECOMMENDED PCB LAYOUT (MILLING)
 NOTE 4, 5 & 6
 SCALE 4:1


| 10.8 MM RECEPTACLE GUIDE MODULE NOTE 4 | DIM "A" |
|---|---------|
| 10037912-1X1LF | 0° |
| 10037912-1X2LF | 45° |
| 10037912-1X3LF | 90° |
| 10037912-1X4LF | 135° |
| 10037912-1X5LF | 180° |
| 10037912-1X6LF | 225° |
| 10037912-1X7LF | 270° |
| 10037912-1X8LF | 315° |

| | | | |
|--|--|-----------------|--------------|
| | title 10.8mm GUIDE PIN, EXT. THREAD | dwg no 10037910 | Rev. D |
| | catalog no | CUSTOMER | sheet 2 of 3 |

| PART NUMBER | DIM "B" | DIM "C" 4/5 PAIR | DIM "C" 2/3 PAIR |
|----------------|---------|---------------------|---------------------|
| 10037910-101LF | 1.32 | 6.00 | 4.50 |
| 10037910-102LF | 2.60 | 6.00 | 4.50 |
| 10037910-103LF | 4.20 | 6.00 | 4.50 |
| 10037910-104LF | 5.70 | 6.00 | 4.50 |
| 10037910-105LF | 7.30 | 6.00 | 4.50 |



1. MATERIAL: ZINC ALLOY
2. FINISH: ZINC YELLOW CHROMATE
3. APPLICATION SPECIFICATION: GS-20-045
- ④ KEY HOLE ORIENTATION (DIM "A") WILL BE DEFINED BY THE MATING RECEPTACLE GUIDE MODULE PART NUMBER - SEE TABLE (ORIENTATION SHOWN IS FOR 10037912-1X2LF)
- ⑤ REFER TO CUSTOMER DRAWING 10035911 FOR INFORMATION REGARDING PCB LAYOUT OF POWER AND GUIDE MODULES RELATIVE TO SIGNAL MODULES
- ⑥ THRU HOLE PLATING AND ANNULAR RINGS MUST BE ADDED IN APPLICATIONS THAT USE THE ESD GROUNDING OPTION. FINISHED HOLE SIZE IS THE SAME REGARDLESS OF PLATED BARREL OR NOT.
7. THIS PRODUCT MEETS EUROPEAN UNION DIRECTIVES AND OTHER COUNTRY REGULATIONS AS DESCRIBED IN GS-22-008.
8. PACKAGING MEETS GS-14-920 LEAD FREE LABELING SPECIFICATION.
- ⑨  KEEP OUT ZONE MATCH PROFILE OF SEATED GUIDE PIN, SEE SHEET 1 FOR REFERENCE DIMENSIONS OF GUIDE PIN OUTLINE.
- ⑩  A  SYMBOL WILL BE NEXT TO ANY DIMENSION, VIEW OR NOTE WHICH HAS BEEN MODIFIED WITH THE CURRENT DRAWING REVISION.

| | | | | | | |
|---|-------------|-------------------|------------|----------|-------|--------|
|  | title | 10.8mm GUIDE PIN, | eng no | 10037910 | Rev. | D |
| | EXT. THREAD | | catalog no | CUSTOMER | sheet | 3 of 3 |

REV F - 2008-04-17

PDM: Rev:D STATUS:Released ⁴Printed: Dec 01, 2010

FCJ

Copyright FCJ.