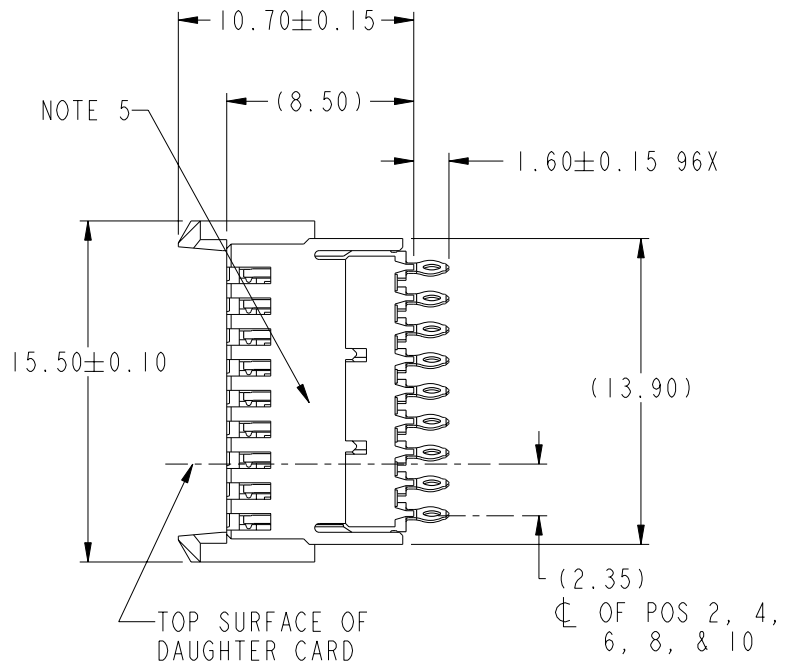
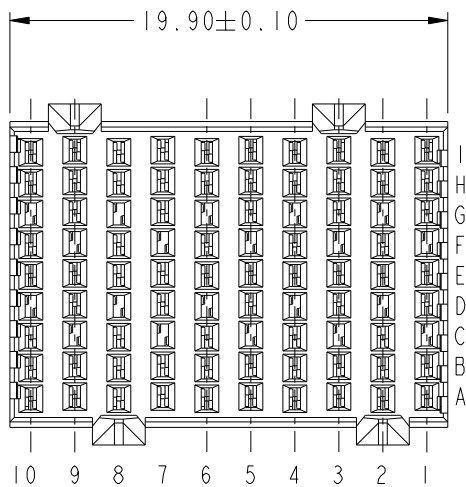




Copyright FCJ.

PRODUCT NUMBER  
SEE TABLE, SHEET 5

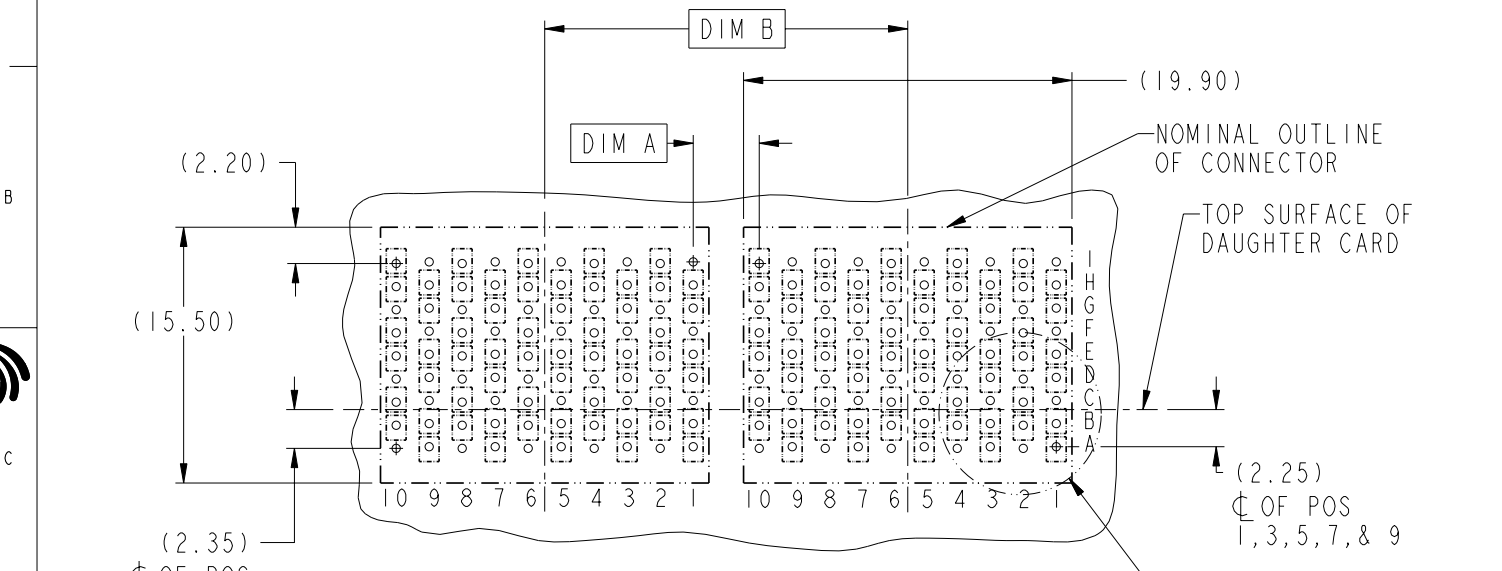


www.fciconnect.com				surface	tolerance std	projection	MM
				ASME Y14.5	ASME Y14.5		Scale 4:1
				TOLERANCES UNLESS OTHERWISE SPECIFIED			
Dr	T. HOUTZ	2004-06-15	ANGULAR	0.x	±	size A4	Scale 4:1
Eng	S. MINICH	2004-06-15	LINEAR	0.xx	±	ECN	***
Chr	C. H. TAN	2007-02-08	0°	0.xxx	±	Product family	AirMax VS
Appr	JOEY NG	2007-02-08	Product family		AirMax VS	Spec ref	RELEASED
FCJ				AirMax VS VERT RECPT ASSY		part no	10034251
				PRESS-FIT, 90 POS, 20MM		Rev.	B
				catalog no	CUSTOMER	sheet 1 of 5	

REV F - 2006-04-17

PDM: Rev:B STATUS:Released 4 Printed: Nov 30, 2010

ADJACENT HEADER WIDTHS	DIM A	DIM B
20MM/20MM	2.00	20.00
22MM/22MM	4.00	22.00
20MM/22MM	3.00	21.00

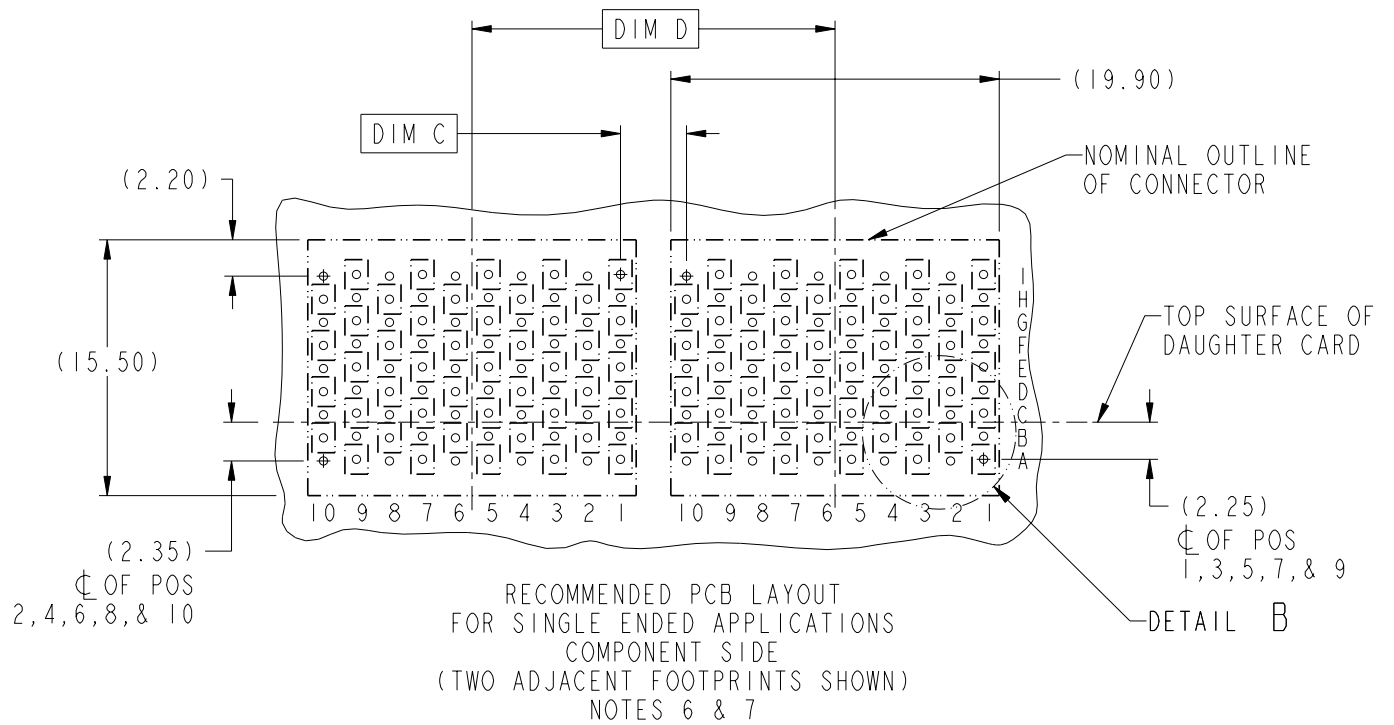


RECOMMENDED PCB LAYOUT  
FOR DIFFERENTIAL APPLICATIONS  
COMPONENT SIDE  
(TWO ADJACENT FOOTPRINTS SHOWN)  
NOTES 6 & 7

	AirMax VS VERT RECPT ASSY	10034251	Rev. B
	PRESS-FIT, 90 POS, 20MM	CUSTOMER	sheet 2 of 5
catalog no	-		

REV F - 2010-04-17

ADJACENT HEADER WIDTHS	DIM C	DIM D
20MM/20MM	2.00	20.00
22MM/22MM	4.00	22.00
20MM/22MM	3.00	21.00



REV F - 2008-04-17

	AirMax VS VERT RECPT ASSY	drawing no	10034251	Rev.	B
	PRESS-FIT, 90 POS, 20MM	catalog no	CUSTOMER	sheet	3 of 5

PDM: Rev:B

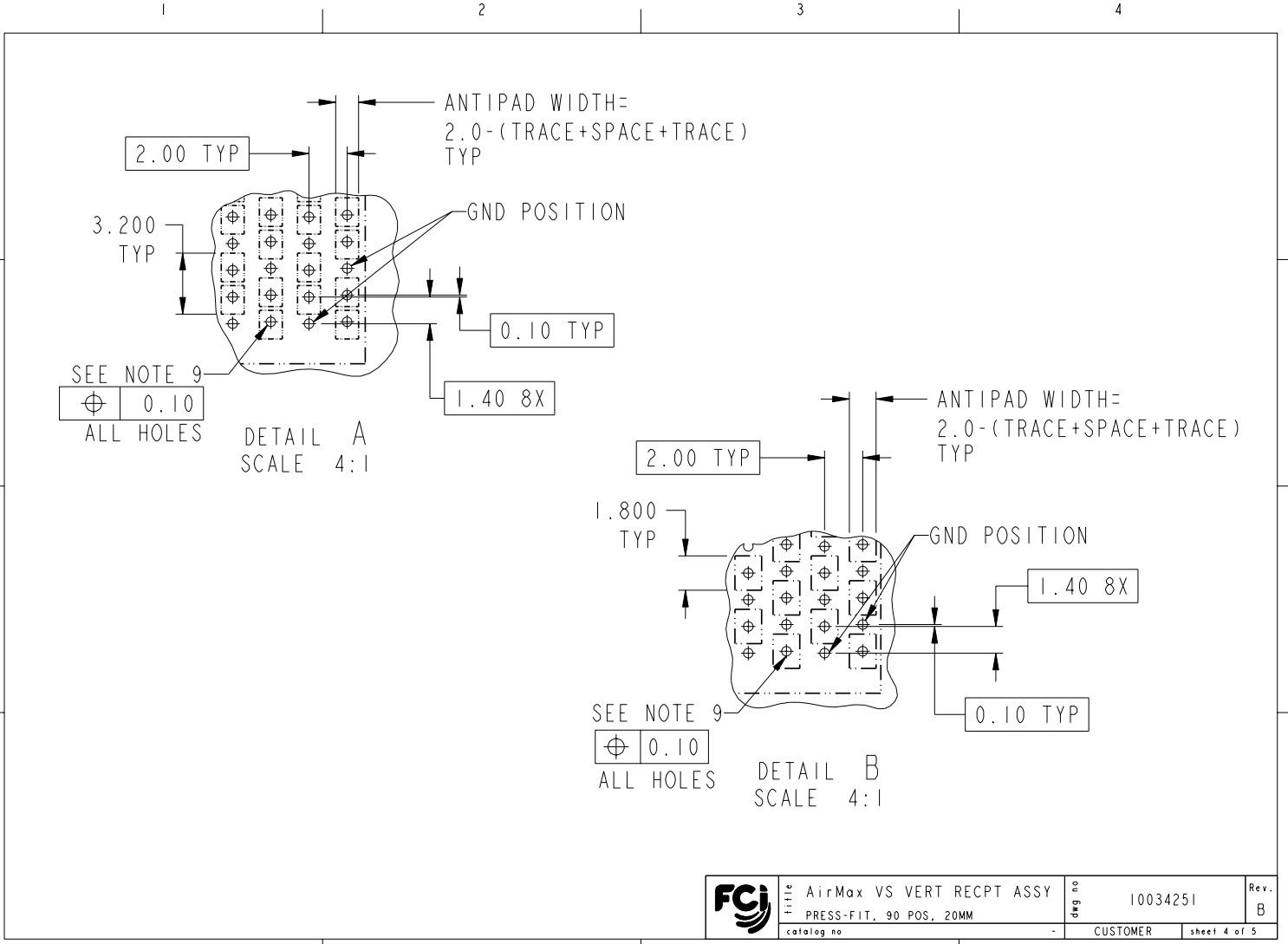
STATUS:Released

4 Printed: Nov 30, 2010

Copyright FCI.  
 FCJ



Copyright FCJ.

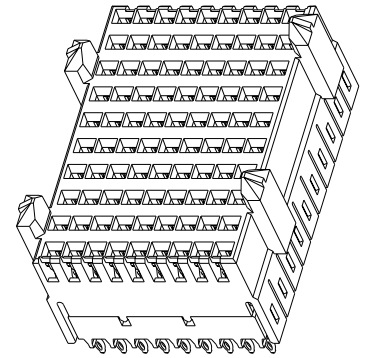


REV F - 2008-04-17

	AirMax VS VERT RECPT ASSY	10034251	Rev. B
	PRESS-FIT, 90 POS, 20MM	CUSTOMER	sheet 4 of 5
catalog no	-		

PDM: Rev:B STATUS:Released 4 Printed: Nov 30, 2010

PART NUMBER	PRESS-FIT TAIL PLATING TYPE
10034251-101	TIN/LEAD ALLOY OVER NICKEL
10034251-101LF	TIN OVER NICKEL (LEAD FREE)



NOTES:

1. CONNECTOR MATERIALS:  
HOUSING & RETAINER: HIGH TEMP THERMOPLASTIC, NATURAL, UL94V-0  
IMLA PLASTIC: HIGH TEMP THERMOPLASTIC, BLACK, UL94V-0  
CONTACT: COPPER ALLOY
2. CONTACT PLATING:  
SEPARABLE INTERFACE: PERFORMANCE-BASED PLATING, QUALIFIED TO MEET THE REQUIREMENTS OF FCI PRODUCT SPECIFICATION GS-12-239, INCLUDING TELCORDIA GR-1217-CORE (November 1995) CENTRAL OFFICE TEST SEQUENCE.  
  
PRESS-FIT TAILS: SEE TABLE
3. PRODUCT SPECIFICATION: GS-12-239
4. APPLICATION SPECIFICATION: GS-20-035
5. PRODUCT MARKING, (PART NUMBER & LOT CODE), ON THIS SURFACE
6. REFER TO CUSTOMER DRAWING 10035911 FOR INFORMATION REGARDING PCB LAYOUT OF POWER AND GUIDE MODULES RELATIVE TO SIGNAL MODULES
7. POSITIONS F OF ODD NUMBERED COLUMNS AND POSITIONS G OF EVEN NUMBERED COLUMNS CORRESPOND TO EARLY MATE HEADER PINS
8. THERE IS NO GROUND BUSSING WITHIN THE CONNECTOR SYSTEM
9. REFER TO CUSTOMER DRAWING 10045979 FOR INFORMATION ON PCB HOLE DIAMETERS AND PLATING OPTIONS.
10. THIS PRODUCT MEETS EUROPEAN UNION DIRECTIVES AND OTHER COUNTRY REGULATIONS AS DESCRIBED IN GS-22-008.
11. THE HOUSING WILL WITHSTAND EXPOSURE TO 260°C PEAK TEMPERATURE FOR 40 SECONDS IN A CONVECTION, INFRA-RED OR VAPOR PHASE REFLOW OVEN.
12. PACKAGING MEETS GS-14-920 LEAD FREE LABELING SPECIFICATION.

FCJ	title	AirMax VS VERT RECPT ASSY	dwg no	10034251	Rev.	B
	catalog no	PRESS-FIT, 90 POS, 20MM	-	CUSTOMER	sheet	5 of 5

REV F - 2008-04-17

PDM: Rev:B STATUS:Released 4 Printed: Nov 30, 2010

FCJ  
Copyright FCI.