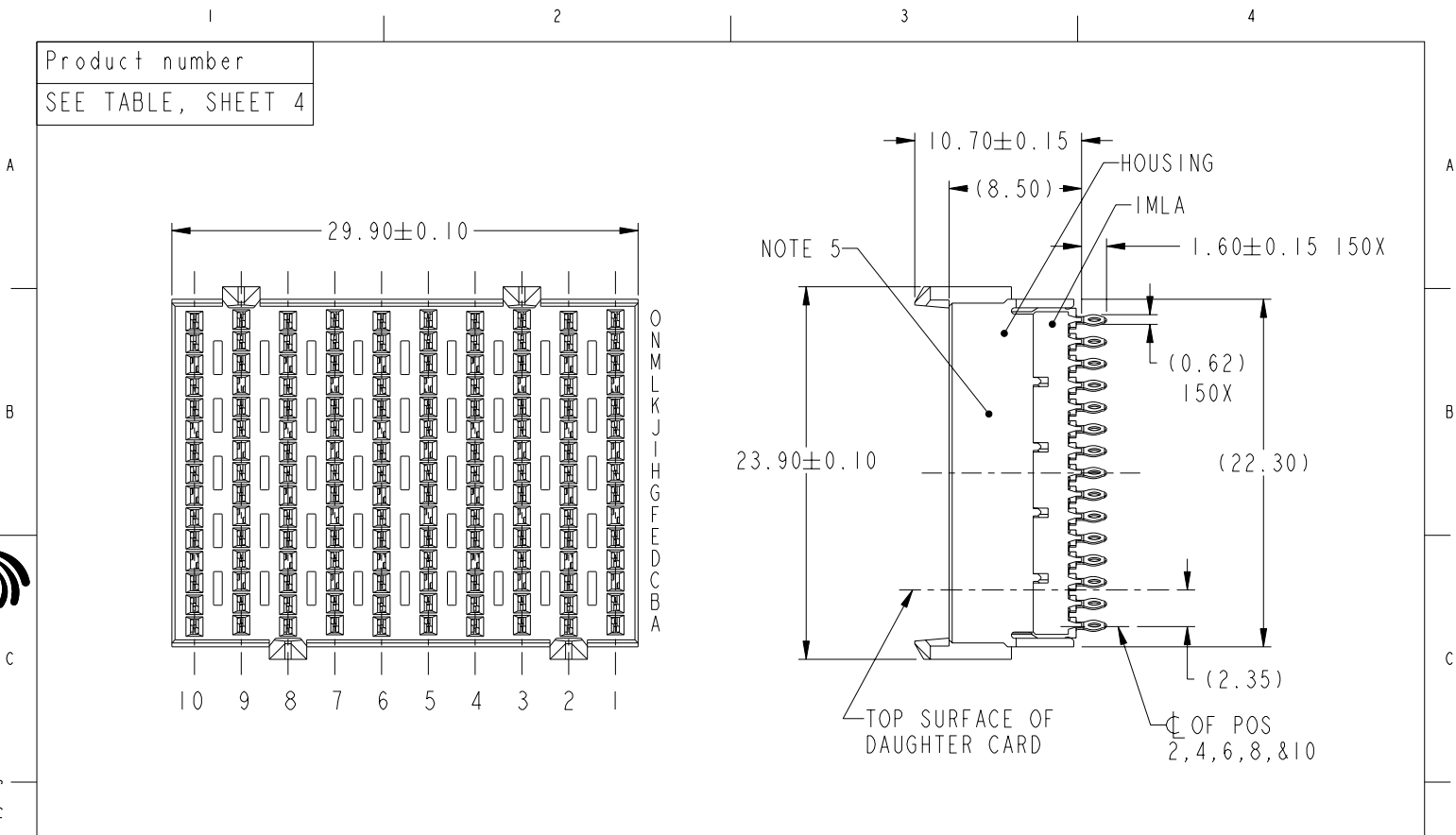


Product number
SEE TABLE, SHEET 4



Copyright FCI.

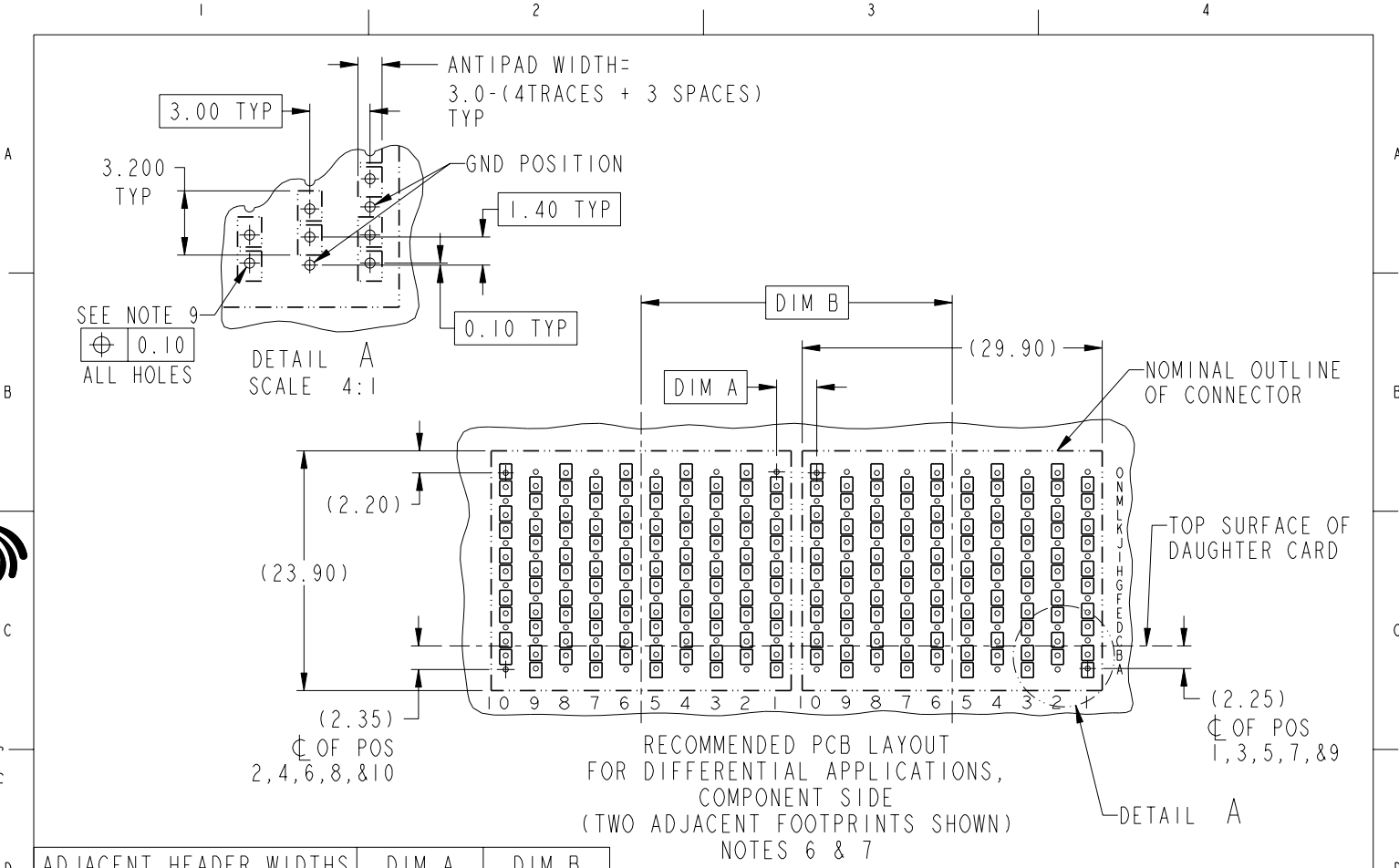
www.fciconnect.com		surface -	tolerance std ASME Y14.5	projection	MM
		ASME Y14.5	ASME Y14.5		
		TOLERANCES UNLESS OTHERWISE SPECIFIED			
Dr	T. HOUTZ	2003-10-08	ANGULAR	0.x ±	size A4
Eng	S. MINICH	2003-10-08	LINEAR	0.xx ±	Scale 3:1
Chr	C. H. TAN	2007-03-27	0° ±	0.xxx ±	ECN ***
Appr	JOEY NG	2007-03-27	Product family	AirMax VS	Spec ref
FCI		AirMax VS VERT RECPT ASSY		part no	10035146
		PRESS-FIT, 150 POSITION, 30mm		customer	B
		catalog no		CUSTOMER	sheet 1 of 4

REV F - 2006-04-17

PDM: Rev:B STATUS:Released 4 Printed: Nov 30, 2010



Copyright FCJ.



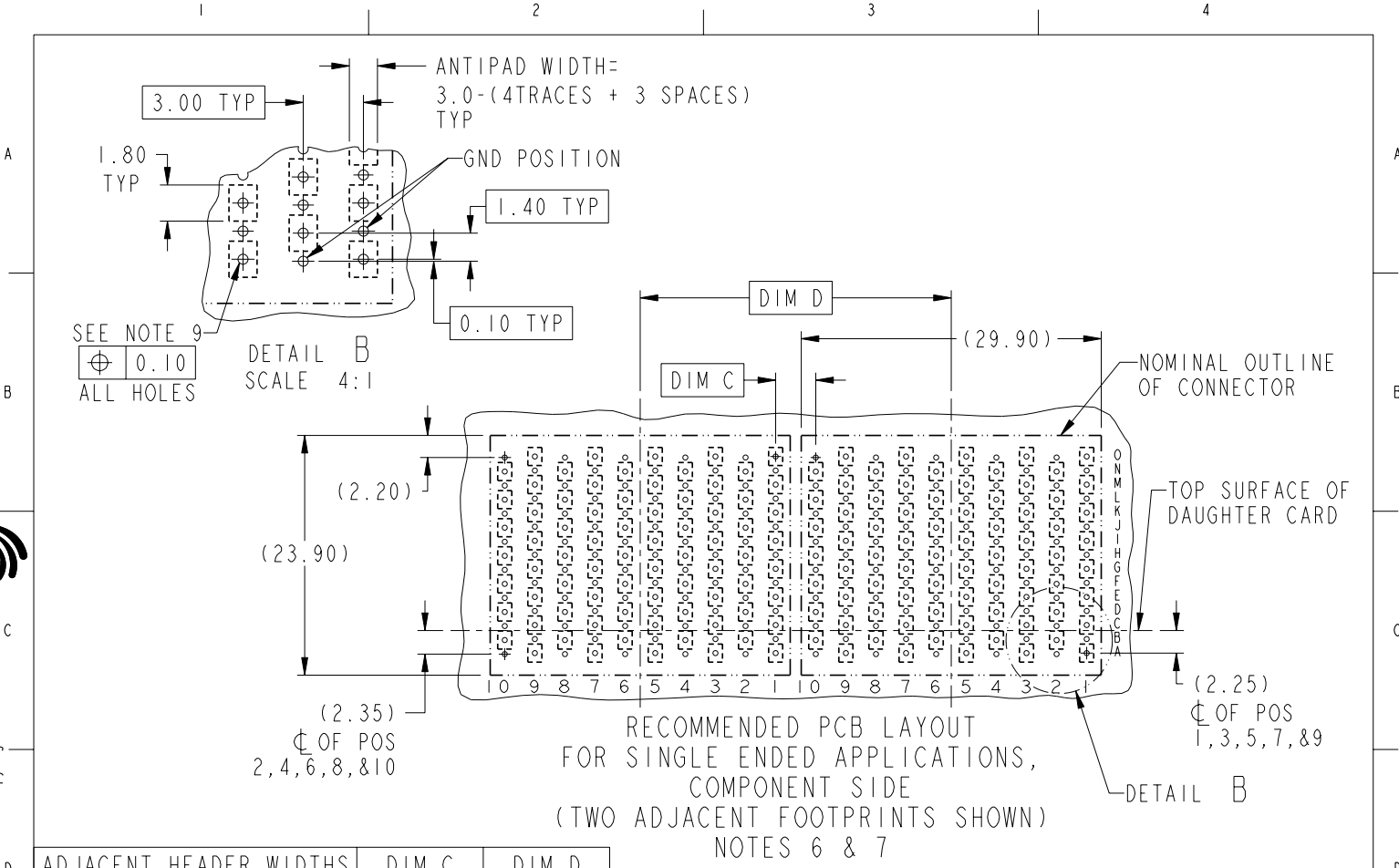
RECOMMENDED PCB LAYOUT FOR DIFFERENTIAL APPLICATIONS, COMPONENT SIDE (TWO ADJACENT FOOTPRINTS SHOWN) NOTES 6 & 7

ADJACENT HEADER WIDTHS	DIM A	DIM B
30MM/30MM	3.00	30.00
32MM/32MM	5.00	32.00
30MM/32MM	4.00	31.00

	title AirMax VS VERT RECPT ASSY PRESS-FIT, 150 POSITION, 30mm	dwg no 10035146	Rev. B
	catalog no -	CUSTOMER	sheet 2 of 4



Copyright FCJ.



RECOMMENDED PCB LAYOUT FOR SINGLE ENDED APPLICATIONS, COMPONENT SIDE (TWO ADJACENT FOOTPRINTS SHOWN) NOTES 6 & 7

ADJACENT HEADER WIDTHS	DIM C	DIM D
30MM/30MM	3.00	30.00
32MM/32MM	5.00	32.00
30MM/32MM	4.00	31.00

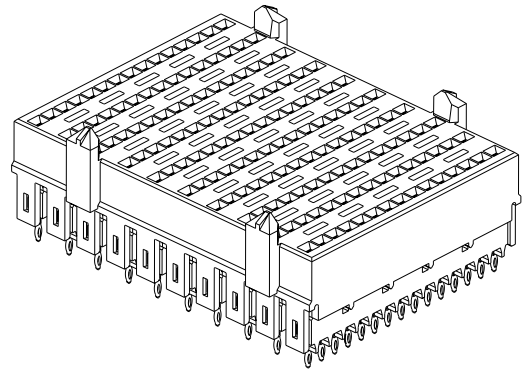
	title AirMax VS VERT RECPT ASSY PRESS-FIT, 150 POSITION, 30mm	drwg no 10035146	Rev. B
	catalog no -	CUSTOMER	sheet 3 of 4

PART NUMBER	PRESS-FIT TAIL PLATING TYPE
10035146-101	TIN/LEAD OVER NICKEL
10035146-101LF	TIN OVER NICKEL (LEAD FREE)

NOTES:

1. CONNECTOR MATERIALS:
HOUSING & RETAINER: HIGH TEMP THERMOPLASTIC, NATURAL, UL94V-0
IMLA PLASTIC: HIGH TEMP THERMOPLASTIC, BLACK, UL94V-0
CONTACT: COPPER ALLOY
2. CONTACT PLATING:
SEPARABLE INTERFACE: PERFORMANCE-BASED PLATING, QUALIFIED TO MEET THE REQUIREMENTS OF FCI PRODUCT SPECIFICATION GS-12-239, INCLUDING TELCORDIA GR-1217-CORE (November 1995) CENTRAL OFFICE TEST SEQUENCE

PRESS-FIT TAILS: SEE TABLE
3. PRODUCT SPECIFICATION: GS-12-239
4. APPLICATION SPECIFICATION: GS-20-035
5. PRODUCT MARKING, (PART NUMBER & LOT CODE), ON THIS SURFACE
6. REFER TO CUSTOMER DRAWING 10035911 FOR INFORMATION REGARDING PCB LAYOUT OF POWER AND GUIDE MODULES RELATIVE TO SIGNAL MODULES
7. POSITIONS F & L OF ODD NUMBERED COLUMNS AND POSITIONS G & M OF EVEN NUMBERED COLUMNS CORRESPOND TO EARLY MATE HEADER PINS
8. THERE IS NO GROUND BUSSING WITHIN THE CONNECTOR SYSTEM
9. REFER TO CUSTOMER DRAWING 10045979 FOR INFORMATION ON PCB HOLE DIAMETERS AND PLATING OPTIONS.
10. THIS PRODUCT MEETS EUROPEAN UNION DIRECTIVES AND OTHER COUNTRY REGULATIONS AS DESCRIBED IN GS-22-008.



11. THE HOUSING WILL WITHSTAND EXPOSURE TO 260°C PEAK TEMPERATURE FOR 40 SECONDS IN A CONVECTION, INFRA-RED OR VAPOR PHASE REFLOW OVEN.
12. PACKAGING MEETS GS-14-920 LEAD FREE LABELING SPECIFICATION.



Copyright FCI.

	title	AirMax VS VERT RECPT ASSY	drwg no	10035146	Rev.	B
	catalog no	PRESS-FIT, 150 POSITION, 30mm	-	CUSTOMER	sheet	4 of 4

REV F - 2000-04-17