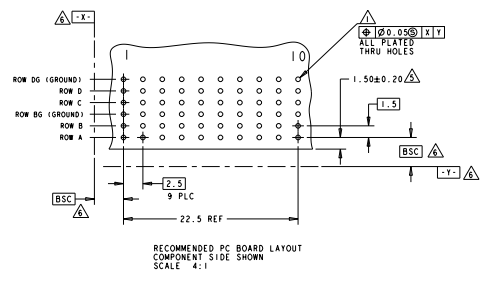
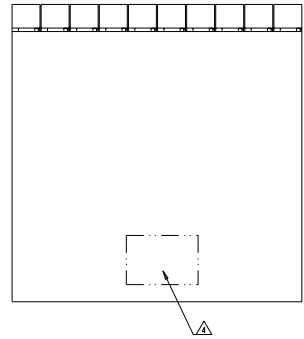
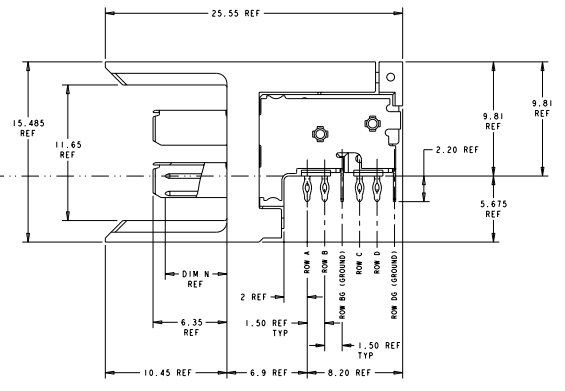
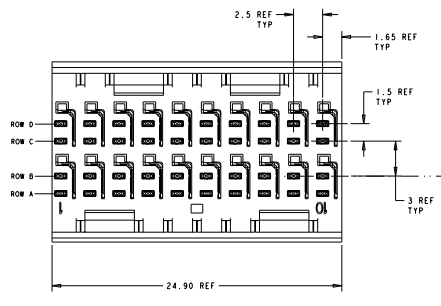


REV	DATE	DESCRIPTION	BY	CHK	APP
A	REV PER ECO-11-007577				



- △ REFERENCE APPLICATION SPEC 114-13059 FOR RECOMMENDED PLATED THRU HOLE DIAMETER AND PLATING THICKNESSES.
- △ MATERIAL: CONTACT & SHIELD - PHOSPHOR BRONZE; HOUSING & CHICKLET - GLASS FILLED POLYESTER
- △ FINISH: SIGNAL AND GROUND CONTACTS: MATING AREA - MEETS THE PERFORMANCE REQUIREMENTS OF PRODUCT SPECIFICATION 108-2055; BASED ON TELCORDIA GR-127-CORE. APPLICATIONS IN UNCONTROLLED ENVIRONMENTS COMPLIANT PIN AREA: 0.5 μm MIN MATTE TIN OVER BASE PLATING.
- △ CONNECTOR MARKED WITH PART NUMBER AND DATE CODE IN APPROXIMATE AREA SHOWN
- △ DIMENSION APPLIES TO CENTERLINE OF THRU HOLE
- △ DATUMS AND BASIC DIMENSIONS ESTABLISHED BY CUSTOMER
- 7. CONTACT AREA LUBRICATED WITH BELLCORE APPROVED LUBRICANT. TECHNICAL REFERENCE: GR-127-CORE, ISSUE 1, NOVEMBER 1995



6469169-1
 PART NUMBER

THIS DRAWING IS A CONTROLLED DOCUMENT.		REVISED: 18 JUL 2004	TE Connectivity
DESIGNED BY: M. PATTERSON	DATE: 18 JUL 2004	REVISED: 18 JUL 2004	TE Connectivity
APPROVED BY: M. PATTERSON	DATE: 18 JUL 2004	REVISED: 18 JUL 2004	TE Connectivity
APPLICATION SPEC: A	STATE: CA	CAGE CODE: 6469169	REVISION: 1
CUSTOMER DRAWING	DATE: 6-11-04	BY: M. PATTERSON	APP: M. PATTERSON