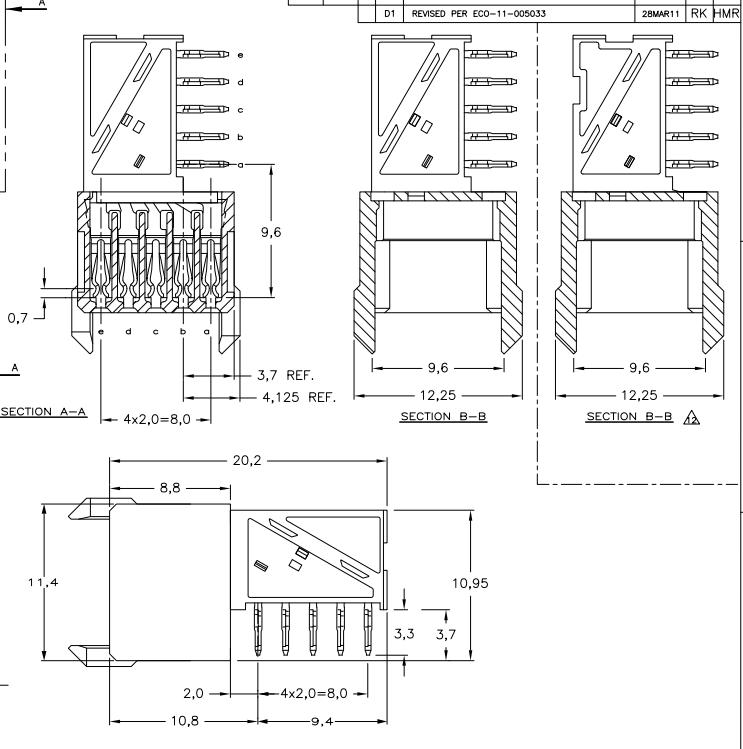
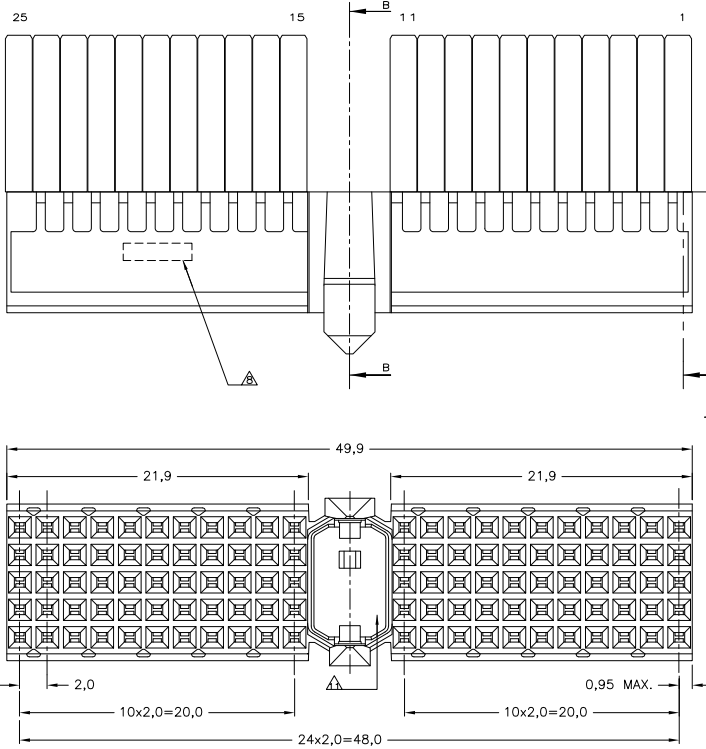
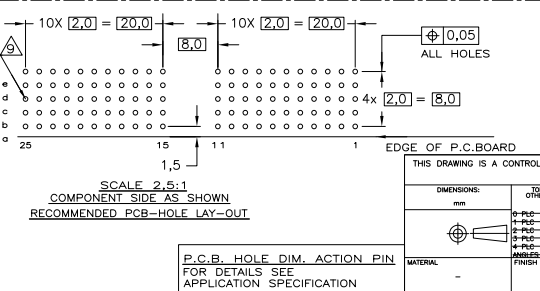


THIS DRAWING IS UNPUBLISHED. RELEASED FOR PUBLICATION. ALL RIGHTS RESERVED.

LOC	DIST	REVISIONS			
F	LR	DESCRIPTION	DATE	BY	APPD
H	-	D1 REVISED PER ECO-11-005033	28MAR11	RK	HMR



- NOTES:**
- △ MATERIAL CONTACT; PHOSPHORBRONZE
 - △ MATERIAL HOUSING; GLASSFILLED POLYESTER (GRAY) UL-RATING 49VO
 - △ GENERAL PLATING SPECIFICATION; UNDERPLATING (ENTIRE CONTACT): 1,27µm NICKEL MIN. AND ACTION PIN: 0,5µm TIN MIN. FOR PLATING OF MATING SURFACES SEE APPLICABLE SPECIFICATION REFERENCE FOR EACH DASH NUMBER.
 - △ CONFORMS TO ALL TESTING ACCORDING IEC 61076-4-101 PERFORMANCE LEVEL 2.
 - △ CONFORMS TO ALL TESTING ACCORDING IEC 61076-4-101 PERFORMANCE LEVEL 1.
 - △ CONNECTOR TESTED AND QUALIFIED AGAINST TELCORDIA GR-1217-CORE QUALITY LEVEL III, CENTRAL OFFICE APPLICATIONS.
 - △ CONNECTOR TESTED AND QUALIFIED AGAINST TELCORDIA GR-1217-CORE QUALITY LEVEL III, UNCONTROLLED ENVIRONMENT APPLICATIONS.
 - △ CONNECTOR LUBRICATED WITH TELCORDIA GR-1217-CORE APPROVED LUBRICANT.
 - △ CONNECTOR MARKED WITH PARTNUMBER AND DATECODE.
 - △ THE MARKING CAN APPEAR ON THE FRONT SIDE OR ON THE BACK SIDE.
 - △ PLATED-THROUGH HOLES AT 2x2mm SQUARE GRID, 110 HOLES.
 - △ 10 FITS WITH INTEGRATED GROUND RETURN UPPERSHIELD, BASIC P.N. 5338107 AND INTEGRATED GROUND RETURN LOWERSHIELD, BASIC P.N. 5338108
 - △ AREA RESERVED FOR CODING KEY, BASIC P.N. 100526
 - △ CONNECTOR ASSEMBLED WITH ALTERNATE FEMALE CONTACTS.
 - △ 0,76µm MIN. GOLD PLATING AT MATING SURFACES.



FINISH	MATERIAL	PARTNUMBER
△△△		3-5100147-0 △△
△△△		1-5100147-9 △△
△△△		5100147-9 △△
△△△		5100147-4 △△
△△△		5100147-1 △△

THIS DRAWING IS A CONTROLLED DOCUMENT.

DRW: K.N.KIBAN	05AUG2004
CHK: B.MOOU	22SEP2004
APP: B.MOOU	
PRODUCT SPEC: 108-19082	
APPLICATION SPEC: 114-19029	
WEIGHT: -	

TE Connectivity

Z-PACK 2mm HM TYPE A
110 POS. FEMALE CONNECTOR

SIZE: A2 ONE CODE: 00779 DRAWING NO: C=5100147 RESTRICTED TO: -

CUSTOMER DRAWING SCALE: 5:1 SHEET: 1 of 1 REV: D1