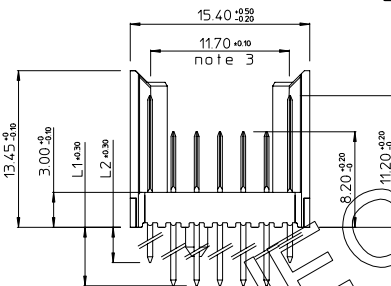
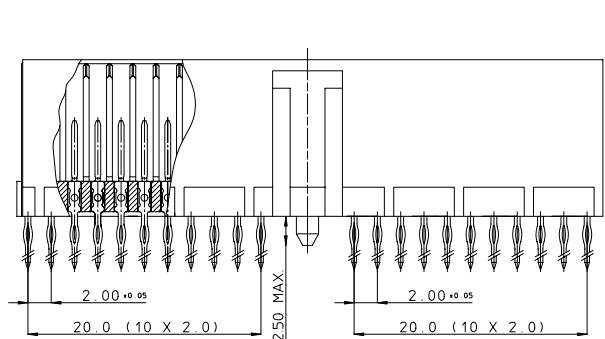


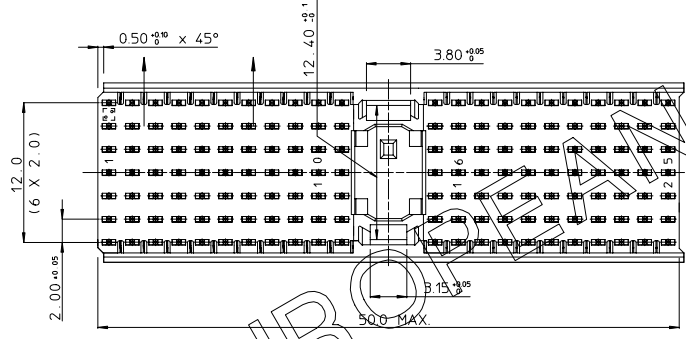
BS.C ,201632,007	C	GEN. ST.	01	02	03	04	05	06	07	08	0D	50	60	70	80	90	REV.	DATE	DESCRIPTION	BY	C'K'D'														
		INT. ST.	10	11	12	13	14	18	20	31	32	33	34	38	39	40	42	43	44	45	46	48	56	70	72	73	76	81	82	83	84	88	A	2001-09-14	CONVERSION REVISION 07
																			B	2005-10-07	105-0184	ALEX B	BKP												
																			C	2006-07-04	106-0096	VIVEX	BKP												



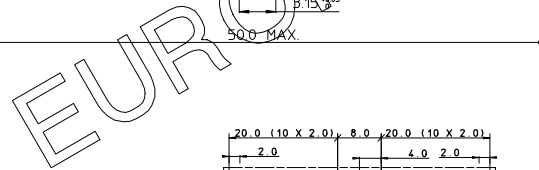
PERFORMANCE CHARACTERISTICS

CURRENT RATING : 1.5 A AT 20°C (FULLY LOADED)
 1 A AT 70°C (FULLY LOADED)
 RATED VOLTAGE : 500 V AC (CONT / CONT)
 OPERATING TEMPERATURE : -55°C TO 125°C
 CONTACT RESISTANCE : 20 mΩ MAX
 INSERTION FORCE : 0.75 N MAX / CONT
 EXTRACTION FORCE : 0.15 N MIN / CONT
 INSULATION RESISTANCE : 10⁴ MΩ MIN

CAT. NR.	L1 ±0.3	L2 ±0.3	DESCRIPTION
HM2P07PD5111	3.7	3.7	SHORT PRESS-FIT
HM2R07PC5111	4.5	4.5	SHORT PRESS-FIT
HM2P07PK5111	13	4.5	REAR PLUG-UP: LEVEL 1
HM2P07PM5111	14.5	4.5	REAR PLUG-UP: LEVEL 2
HM2P07PN5111	16	4.5	REAR PLUG-UP: LEVEL 3
HM2P07PT5111	13	4.5	WIRE WRAP

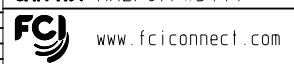


- NOTES**
- *HM2P07P#5111* PERFORMANCE LEVEL INDICATOR (REFER DWG No. BS.C ,201844,003)
LEAD FREE INDICATOR : LF=LEAD FREE (DIGIT 15&16)
 - THIS PRODUCT IS CSA APPROVED.
THIS PRODUCT IS UL RECOGNIZED.
 - MEASURED AT THE BOTTOM.
 - FOR RECOMMENDED PTH DIMENSIONS REFER DRAWING : BS.A ,201572,001
 - THE PRODUCT (LF) MEETS EUROPEAN UNION DIRECTIVES AND OTHER COUNTRY REGULATIONS AS DESCRIBED IN GS-22-008



MALE SIGNAL STRAIGHT PRESS-FIT-TO-BOARD CONNECTOR
 WITH SERVICECENTER (WIDE BODY)

1DEC ±0.2 2DEC ±0.1 ANGLES ±1°	APPR. DRAFT CHECKED	DATE 1994-05-16	SIGN. W.Panis	MILLIPACS 2 / TYPE A / SHIELDED CAT. No. HM2P07P#5111----
WE RESERVE THE RIGHT TO CHANGE DIMENSIONS OR REGULATIONS WITHOUT PRIOR NOTICE.	PROD. MGR PR. ENG. MGR PR. MGT. MGR			SCALE 3 / 1



THIS IS OUR EXCLUSIVE PROPERTY. IT IS NOT TO BE COPIED, REPRINTED OR DISCLOSED TO A THIRD PARTY. NOT USED FOR MANUFACTURING WITHOUT OUR WRITTEN CONSENT. AND HAS TO BE RETURNED TO US IN CASE OF NO USAGE.

DIT IS ONZE EIGENDOM EN MAG NIET NAEMAKEN, HERKOPERT, OVERGEHAKT AAN DERDEN, NIET VOOR PARTIJELE GEBRUIK WERDEN, ZONDER ONZE SCHRIFTELIJKE TOELATING. BIJ NIET GEBRUIK IS TERUGZENDING VERPLICHT.

BS.C ,201632,007 C
 DRAWING No. CUSTOMER DRAWING REVISION
 PDM: Rev:C STATUS: Released Printed: Dec 01, 2007