



4

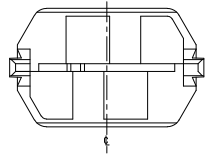
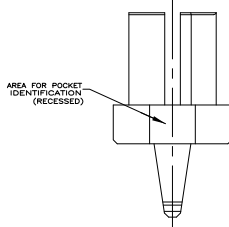
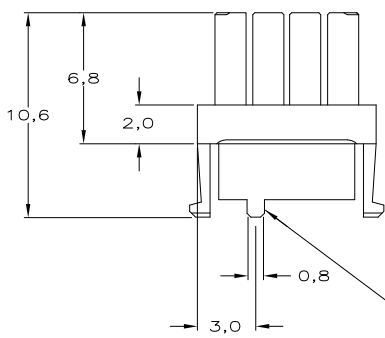
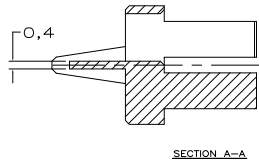
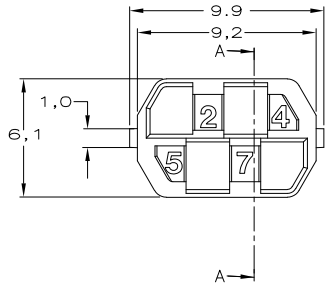
3

2

1

THIS DRAWING IS UNPUBLISHED. RELEASED FOR PUBLICATION  
 © COPYRIGHT - By - ALL RIGHTS RESERVED.

LOC		DIST		REVISIONS				
P	LTR	DESCRIPTION			DATE	DWN	APVD	
-	-	SEE SHEET1			-	-	-	



PLC	COLOUR	MALE KEY	RAL NR.	ID. NUMBER	PARTNUMBER
-	-	-	-	-	-
-	-	-	-	-	-
-	-	-	-	-	-
-	-	-	-	-	-
-	-	-	-	-	-
-	-	-	-	-	-
-	-	-	-	-	-
-	-	-	-	-	-
-	-	-	-	-	-
6-100525-9	OCHER YELLOW	1024	1235	6-100526-9	
6-100525-4	RASPBERRY RED	3027	1246	6-100526-4	
5-100525-3	OCEAN BLUE	5020	1347	5-100526-3	
5-100525-2	EMERALD GREEN	6001	1348	5-100526-2	
4-100525-9	YELLOW ORANGE	2000	1358	4-100526-9	
4-100525-8	HEATHER VIOLET	4003	1367	4-100526-8	
4-100525-4	COPPER BROWN	8004	1457	4-100526-4	
4-100525-3	STONE GREY	7030	1458	4-100526-3	
3-100525-7	PURPLE RED	3004	1578	3-100526-7	
3-100525-5	SALMON PINK	3022	2345	3-100526-5	
3-100525-4	RED LILAC	4001	2346	3-100526-4	
2-100525-7	LIGHT IVORY	1015	2368	2-100526-7	
2-100525-6	PASTEL GREEN	6019	2378	2-100526-6	
2-100525-4	YELLOW GREEN	6018	2457	2-100526-4	
2-100525-0	BLUE LILAC	4005	2478	2-100526-0	
1-100525-8	PIGEON BLUE	5014	2568	1-100526-8	
1-100525-4	OLIVE YELLOW	1020	3457	1-100526-4	
1-100525-3	CEMENT GREY	7033	3458	1-100526-3	
1-100525-2	LIGHT GREEN	6027	3467	1-100526-2	
100525-8	PURE ORANGE	2004	3568	100526-8	
100525-5	ULTRAMARINE BLUE	5002	4567	100526-5	
100525-2	GREEN BROWN	8000	4678	100526-2	

THIS DRAWING IS A CONTROLLED DOCUMENT.

DWN: D. TRUREN 03-FEB-98  
 CHK: D. TRUREN 03-FEB-98  
 APVD: F.V. KONINGSBRUGGE

NAME: E.V. KONINGSBRUGGE

PRODUCT SPEC: -  
 APPLICATION SPEC: -  
 WEIGHT: -

SIZE: A3 CAGE CODE: 00779 DRAWING NO: C-100526 RESTRICTED TO: -

CUSTOMER DRAWING SCALE: - SHEET: 2 of 2 REV: D1

TE Connectivity  
 Z-PACK 2mm HM FEMALE CODING KEYS