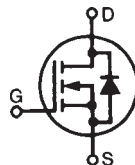


Polar™ Power MOSFET HiPerFET™

N-Channel Enhancement Mode
Avalanche Rated
Fast Intrinsic Diode

IXFH12N120P
IXFV12N120P
IXFV12N120PS

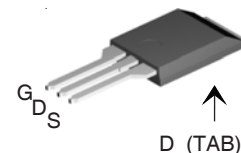


Symbol	Test Conditions	Maximum Ratings	
V_{DSS}	$T_J = 25^\circ\text{C to } 150^\circ\text{C}$	1200	V
V_{DGR}	$T_J = 25^\circ\text{C to } 150^\circ\text{C}, R_{GS} = 1\text{M}\Omega$	1200	V
V_{GSS}	Continuous	± 30	V
V_{GSM}	Transient	± 40	V
I_{D25}	$T_C = 25^\circ\text{C}$	12	A
I_{DM}	$T_C = 25^\circ\text{C}$, pulse width limited by T_{JM}	30	A
I_A	$T_C = 25^\circ\text{C}$	6	A
E_{AS}	$T_C = 25^\circ\text{C}$	500	mJ
dV/dt	$I_S \leq I_{DM}, V_{DD} \leq V_{DSS}, T_J \leq 150^\circ\text{C}$	15	V/ns
P_D	$T_C = 25^\circ\text{C}$	543	W
T_J		-55 ... +150	$^\circ\text{C}$
T_{JM}		150	$^\circ\text{C}$
T_{stg}		-55 ... +150	$^\circ\text{C}$
T_L	Maximum lead temperature for soldering	300	$^\circ\text{C}$
T_{SOLD}	Plastic body for 10s	260	$^\circ\text{C}$
M_d	Mounting torque (TO-247)	1.13/10	Nm/lb.in.
F_C	Mounting force (PLUS 220)	11..65 / 2.5..14.6	N/lb.
Weight	TO-247	6	g
	PLUS 220 types	4	g

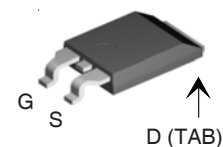
Symbol	Test Conditions ($T_J = 25^\circ\text{C}$, unless otherwise specified)	Characteristic Values		
		Min.	Typ.	Max.
BV_{DSS}	$V_{GS} = 0\text{V}, I_D = 1\text{mA}$	1200		V
$V_{GS(th)}$	$V_{DS} = V_{GS}, I_D = 1\text{mA}$	3.5		6.5 V
I_{GSS}	$V_{GS} = \pm 30\text{V}, V_{DS} = 0\text{V}$			± 100 nA
I_{DSS}	$V_{DS} = V_{DSS}$			25 μA
	$V_{GS} = 0\text{V}$			2 mA
		$T_J = 125^\circ\text{C}$		
$R_{DS(on)}$	$V_{GS} = 10\text{V}, I_D = 0.5 \cdot I_{D25}, \text{ Note 1}$	1.15	1.35	Ω

$$\begin{aligned} V_{DSS} &= 1200\text{V} \\ I_{D25} &= 12\text{A} \\ R_{DS(on)} &\leq 1.35\Omega \\ t_{rr} &\leq 300\text{ns} \end{aligned}$$

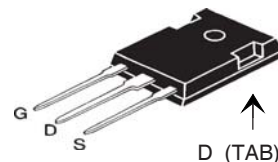
PLUS220 (IXFV)



PLUS220SMD (IXFV_S)



TO-247 (IXFH)



G = Gate D = Drain
S = Source TAB = Drain

Features

- International standard packages
- Fast recovery diode
- Unclamped Inductive Switching (UIS) rated
- Low package inductance
 - easy to drive and to protect

Advantages

- Easy to mount
- Space savings
- High power density

Applications:

- High Voltage Switched-mode and resonant-mode power supplies
- High Voltage Pulse Power Applications
- High Voltage Discharge circuits in Lasers Pulsers, Spark Igniters, RF Generators
- High Voltage DC-DC converters
- High Voltage DC-AC inverters

Symbol	Test Conditions ($T_J = 25^\circ\text{C}$ unless otherwise specified)	Characteristic Values		
		Min.	Typ.	Max.
g_{fs}	$V_{DS} = 20\text{V}, I_D = 0.5 \cdot I_{D25}$, Note 1	5	9	S
C_{iss}	$V_{GS} = 0\text{V}, V_{DS} = 25\text{V}, f = 1\text{MHz}$		5400	pF
C_{oss}			290	pF
C_{rss}			40	pF
R_{Gi}	Gate input resistance		1.5	Ω
$t_{d(on)}$	Resistive Switching Times $V_{GS} = 10\text{V}, V_{DS} = 0.5 \cdot V_{DSS}, I_D = 0.5 \cdot I_{D25}$ $R_G = 2\Omega$ (External)		34	ns
t_r			25	ns
$t_{d(off)}$			62	ns
t_f			34	ns
$Q_{g(on)}$	$V_{GS} = 10\text{V}, V_{DS} = 0.5 \cdot V_{DSS}, I_D = 0.5 \cdot I_{D25}$		103	nC
Q_{gs}			29	nC
Q_{gd}			41	nC
R_{thJC}	(TO-247, PLUS 220)			0.23 $^\circ\text{C/W}$
R_{thCS}			0.21	$^\circ\text{C/W}$

Source-Drain Diode		Characteristic Values		
$T_J = 25^\circ\text{C}$ unless otherwise specified)		Min.	Typ.	Max.
I_S	$V_{GS} = 0\text{V}$			12 A
I_{SM}	Repetitive, pulse width limited by T_{JM}			48 A
V_{SD}	$I_F = I_S, V_{GS} = 0\text{V}$, Note 1			1.5 V
t_{rr}	$I_F = 6\text{A}, -di/dt = 100\text{A}/\mu\text{s}$ $V_R = 100\text{V}, V_{GS} = 0\text{V}$			300 ns
Q_{RM}			0.5	μC
I_{RM}			6	A

Note 1: Pulse test, $t \leq 300\mu\text{s}$; duty cycle, $d \leq 2\%$.

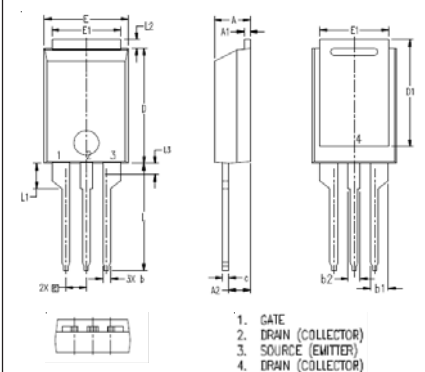
PLUS220SMD (IXFV S) Outline

Technical drawing of the PLUS220SMD (IXFV S) package showing top, side, and end views with dimension labels.

Top View Dimensions:

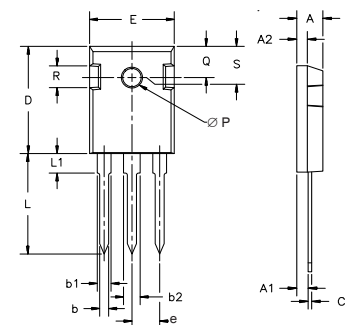
- E : Overall width
- E_1 : Width of the central gate region
- L_2 : Distance from the center of the gate to the edge of the package
- D : Overall length
- D_1 : Length of the central gate region
- H : Height of the central gate region
- L_1 : Distance from the center of the gate to the edge of the package
- L_3 : Distance from the center of the gate to the edge of the package
- L_4 : Distance from the center of the gate to the edge of the package
- L : Distance from the center of the gate to the edge of the package
- L_1 : Distance from the center of the gate to the edge of the package
- L_2 : Distance from the center of the gate to the edge of the package
- L_3 : Distance from the center of the gate to the edge of the package
- L_4 : Distance from the center of the gate to the edge of the package
- L : Distance from the center of the gate to the edge of the package
- L_1 : Distance from the center of the gate to the edge of the package
- L_2 : Distance from the center of the gate to the edge of the package
- L_3 : Distance from the center of the gate to the edge of the package
- L_4 : Distance from the center of the gate to the edge of the package
- L : Distance from the center of the gate to the edge of the package
- L_1 : Distance from the center of the gate to the edge of the package
- L_2 : Distance from the center of the gate to the edge of the package
- L_3 : Distance from the center of the gate to the edge of the package
- L_4 : Distance from the center of the gate to the edge of the package
- L : Distance from the center of the gate to the edge of the package
- L_1 : Distance from the center of the gate to the edge of the package
- L_2 : Distance from the center of the gate to the edge of the package
- L_3 : Distance from the center of the gate to the edge of the package
- L_4 : Distance from the center of the gate to the edge of the package
- L : Distance from the center of the gate to the edge of the package
- L_1 : Distance from the center of the gate to the edge of the package
- L_2 : Distance from the center of the gate to the edge of the package
- L_3 : Distance from the center of the gate to the edge of the package
- L_4 : Distance from the center of the gate to the edge of the package
- L : Distance from the center of the gate to the edge of the package
- L_1 : Distance from the center of the gate to the edge of the package
- L_2 : Distance from the center of the gate to the edge of the package
- L_3 : Distance from the center of the gate to the edge of the package
- L_4 : Distance from the center of the gate to the edge of the package
- L : Distance from the center of the gate to the edge of the package
- L_1 : Distance from the center of the gate to the edge of the package
- L_2 : Distance from the center of the gate to the edge of the package
- L_3 : Distance from the center of the gate to the edge of the package
- L_4 : Distance from the center of the gate to the edge of the package
- L : Distance from the center of the gate to the edge of the package
- L_1 : Distance from the center of the gate to the edge of the package
- L_2 : Distance from the center of the gate to the edge of the package
- L_3 : Distance from the center of the gate to the edge of the package
- L_4 : Distance from the center of the gate to the edge of the package
- L : Distance from the center of the gate to the edge of the package
- L_1 : Distance from the center of the gate to the edge of the package
- L_2 : Distance from the center of the gate to the edge of the package
- L_3 : Distance from the center of the gate to the edge of the package
- L_4 : Distance from the center of the gate to the edge of the package
- L : Distance from the center of the gate to the edge of the package
- L_1 : Distance from the center of the gate to the edge of the package
- L_2 : Distance from the center of the gate to the edge of the package
- L_3 : Distance from the center of the gate to the edge of the package
- L_4 : Distance from the center of the gate to the edge of the package
- L : Distance from the center of the gate to the edge of the package
- L_1 : Distance from the center of the gate to the edge of the package
- L_2 : Distance from the center of the gate to the edge of the package
- L_3 : Distance from the center of the gate to the edge of the package
- L_4 : Distance from the center of the gate to the edge of the package
- L : Distance from the center of the gate to the edge of the package
- L_1 : Distance from the center of the gate to the edge of the package
- L_2 : Distance from the center of the gate to the edge of the package
- L_3 : Distance from the center of the gate to the edge of the package
- L_4 : Distance from the center of the gate to the edge of the package
- L : Distance from the center of the gate to the edge of the package
- L_1 : Distance from the center of the gate to the edge of the package
- L_2 : Distance from the center of the gate to the edge of the package
- L_3 : Distance from the center of the gate to the edge of the package
- L_4 : Distance from the center of the gate to the edge of the package
- L : Distance from the center of the gate to the edge of the package
- L_1 : Distance from the center of the gate to the edge of the package
- L_2 : Distance from the center of the gate to the edge of the package
- L_3 : Distance from the center of the gate to the edge of the package
- L_4 : Distance from the center of the gate to the edge of the package
- L : Distance from the center of the gate to the edge of the package
- L_1 : Distance from the center of the gate to the edge of the package
- L_2 : Distance from the center of the gate to the edge of the package
- L_3 : Distance from the center of the gate to the edge of the package
- L_4 : Distance from the center of the gate to the edge of the package
- L : Distance from the center of the gate to the edge of the package
- L_1 : Distance from the center of the gate to the edge of the package
- L_2 : Distance from the center of the gate to the edge of the package
- L_3 : Distance from the center of the gate to the edge of the package
- L_4 : Distance from the center of the gate to the edge of the package
- L : Distance from the center of the gate to the edge of the package
- L_1 : Distance from the center of the gate to the edge of the package
- L_2 : Distance from the center of the gate to the edge of the package
- L_3 : Distance from the center of the gate to the edge of the package
- L_4 : Distance from the center of the gate to the edge of the package
- L : Distance from the center of the gate to the edge of the package
- L_1 : Distance from the center of the gate to the edge of the package
- L_2 : Distance from the center of the gate to the edge of the package
- L_3 : Distance from the center of the gate to the edge of the package
- L_4 : Distance from the center of the gate to the edge of the package
- L : Distance from the center of the gate to the edge of the package
- L_1 : Distance from the center of the gate to the edge of the package
- L_2 : Distance from the center of the gate to the edge of the package
- L_3 : Distance from the center of the gate to the edge of the package
- L_4 : Distance from the center of the gate to the edge of the package
- L : Distance from the center of the gate to the edge of the package
- L_1 : Distance from the center of the gate to the edge of the package
- L_2 : Distance from the center of the gate to the edge of the package
- L_3 : Distance from the center of the gate to the edge of the package
- L_4 : Distance from the center of the gate to the edge of the package
- L : Distance from the center of the gate to the edge of the package
- L_1 : Distance from the center of the gate to the edge of the package
- L_2 : Distance from the center of the gate to the edge of the package
- L_3 : Distance from the center of the gate to the edge of the package
- L_4 : Distance from the center of the gate to the edge of the package
- L : Distance from the center of the gate to the edge of the package
- L_1 : Distance from the center of the gate to the edge of the package
- L_2 : Distance from the center of the gate to the edge of the package
- L_3 : Distance from the center of the gate to the edge of the package
- L_4 : Distance from the center of the gate to the edge of the package
- L : Distance from the center of the gate to the edge of the package
- L_1 : Distance from the center of the gate to the edge of the package
- L_2 : Distance from the center of the gate to the edge of the package
- L_3 : Distance from the center of the gate to the edge of the package
- L_4 : Distance from the center of the gate to the edge of the package
- L : Distance from the center of the gate to the edge of the package
- L_1 : Distance from the center of the gate to the edge of the package
- L_2 : Distance from the center of the gate to the edge of the package
- L_3 : Distance from the center of the gate to the edge of the package
- L_4 : Distance from the center of the gate to the edge of the package
- L : Distance from the center of the gate to the edge of the package
- L_1 : Distance from the center of the gate to the edge of the package
- L_2 : Distance from the center of the gate to the edge of the package
- L_3 : Distance from the center of the gate to the edge of the package
- L_4 : Distance from the center of the gate to the edge of the package
- L : Distance from the center of the gate to the edge of the package
- L_1 : Distance from the center of the gate to the edge of the package
- L_2 : Distance from the center of the gate to the edge of the package
- L_3 : Distance from the center of the gate to the edge of the package
- L_4 : Distance from the center of the gate to the edge of the package
- L : Distance from the center of the gate to the edge of the package
- L_1 : Distance from the center of the gate to the edge of the package
- L_2 : Distance from the center of the gate to the edge of the package
- L_3 : Distance from the center of the gate to the edge of the package
- L_4 : Distance from the center of the gate to the edge of the package
- L : Distance from the center of the gate to the edge of the package
- L_1 : Distance from the center of the gate to the edge of the package
- L_2 : Distance from the center of the gate to the edge of the package
- L_3 : Distance from the center of the gate to the edge of the package
- L_4 : Distance from the center of the gate to the edge of the package
- L : Distance from the center of the gate to the edge of the package
- L_1 : Distance from the center of the gate to the edge of the package
- L_2 : Distance from the center of the gate to the edge of the package
- L_3 : Distance from the center of the gate to the edge of the package
- L_4 : Distance from the center of the gate to the edge of the package
- L : Distance from the center of the gate to the edge of the package
- L_1 : Distance from the center of the gate to the edge of the package
- L_2 : Distance from the center of the gate to the edge of the package
- L_3 : Distance from the center of the gate to the edge of the package
- L_4 : Distance from the center of the gate to the edge of the package
- L : Distance from the center of the gate to the edge of the package
- L_1 : Distance from the center of the gate to the edge of the package
- L_2 : Distance from the center of the gate to the edge of the package
- L_3 : Distance from the center of the gate to the edge of the package
- L_4 : Distance from the center of the gate to the edge of the package
- L : Distance from the center of the gate to the edge of the package
- L_1 : Distance from the center of the gate to the edge of the package
- L_2 : Distance from the center of the gate to the edge of the package
- L_3 : Distance from the center of the gate to the edge of the package
- L_4 : Distance from the center of the gate to the edge of the package
- L : Distance from the center of the gate to the edge of the package
- L_1 : Distance from the center of the gate to the edge of the package
- L_2 : Distance from the center of the gate to the edge of the package
- L_3 : Distance from the center of the gate to the edge of the package
- L_4 : Distance from the center of the gate to the edge of the package
- L : Distance from the center of the gate to the edge of the package
- L_1 : Distance from the center of the gate to the edge of the package
- L_2 : Distance from the center of the gate to the edge of the package
- L_3 : Distance from the center of the gate to the edge of the package
- L_4 : Distance from the center of the gate to the edge of the package
- L : Distance from the center of the gate to the edge of the package
- L_1 : Distance from the center of the gate to the edge of the package
- L_2 : Distance from the center of the gate to the edge of the package
- L_3 : Distance from the center of the gate to the edge of the package
- L_4 : Distance from the center of the gate to the edge of the package
- L : Distance from the center of the gate to the edge of the package
- L_1 : Distance from the center of the gate to the edge of the package
- L_2 : Distance from the center of the gate to the edge of the package
- L_3 : Distance from the center of the gate to the edge of the package
- L_4 : Distance from the center of the gate to the edge of the package
- L : Distance from the center of the gate to the edge of the package
- L_1 : Distance from the center of the gate to the edge of the package
- L_2 : Distance from the center of the gate to the edge of the package
- L_3 : Distance from the center of the gate to the edge of the package
- L_4 : Distance from the center of the gate to the edge of the package
- L : Distance from the center of the gate to the edge of the package
- L_1 : Distance from the center of the gate to the edge of the package
- L_2 : Distance from the center of the gate to the edge of the package
- L_3 : Distance from the center of the gate to the edge of the package
- L_4 : Distance from the center of the gate to the edge of the package
- L : Distance from the center of the gate to the edge of the package
- L_1 : Distance from the center of the gate to the edge of the package
- L_2 : Distance from the center of the gate to the edge of the package
- L_3 : Distance from the center of the gate to the edge of the package
- L_4 : Distance from the center of the gate to the edge of the package
- L : Distance from the center of the gate to the edge of the package
- L_1 : Distance from the center of the gate to the edge of the package
- L_2 : Distance from the center of the gate to the edge of the package
- L_3 : Distance from the center of the gate to the edge of the package
- L_4 : Distance from the center of the gate to the edge of the package
- L : Distance from the center of the gate to the edge of the package
- L_1 : Distance from the center of the gate to the edge of the package
- L_2 : Distance from the center of the gate to the edge of the package
- L_3 : Distance from the center of the gate to the edge of the package
- L_4 : Distance from the center of the gate to the edge of the package
- L : Distance from the center of the gate to the edge of the package
- L_1 : Distance from the center of the gate to the edge of the package
- L_2 : Distance from the center of the gate to the edge of the package
- L_3 : Distance from the center of the gate to the edge of the package
- L_4 : Distance from the center of the gate to the edge of the package
- L : Distance from the center of the gate to the edge of the package
- L_1 : Distance from the center of the gate to the edge of the package
- L_2 : Distance from the center of the gate to the edge of the package
- L_3 : Distance from the center of the gate to the edge of the package
- L_4 : Distance from the center of the gate to the edge of the package
- L : Distance from the center of the gate to the edge of the package
- L_1 : Distance from the center of the gate to the edge of the package
- L_2 : Distance from the center of the gate to the edge of the package
- L_3 : Distance from the center of the gate to the edge of the package
- L_4 : Distance from the center of the gate to the edge of the package
- L : Distance from the center of the gate to the edge of the package
- L_1 : Distance from the center of the gate to the edge of the package
- L_2 : Distance from the center of the gate to the edge of the package
- L_3 : Distance from the center of the gate to the edge of the package
- L_4 : Distance from the center of the gate to the edge of the package
- L : Distance from the center of the gate to the edge of the package
- L_1 : Distance from the center of the gate to the edge of the package
- L_2 : Distance from the center of the gate to the edge of the package
- L_3 : Distance from the center of the gate to the edge of the package
- L_4 : Distance from the center of the gate to the edge of the package
- L : Distance from the center of the gate to the edge of the package
- L_1 : Distance from the center of the gate to the edge of the package
- L_2 : Distance from the center of the gate to the edge of the package
- L_3 : Distance from the center of the gate to the edge of the package
- L_4 : Distance from the center of the gate to the edge of the package
- L : Distance from the center of the gate to the edge of the package
- L_1 : Distance from the center of the gate to the edge of the package
- L_2 : Distance from the center of the gate to the edge of the package
- L_3 : Distance from the center of the gate to the edge of the package
- L_4 : Distance from the center of the gate to the edge of the package
- L : Distance from the center of the gate to the edge of the package
- L_1 : Distance from the center of the gate to the edge of the package
- L_2 : Distance from the center of the gate to the edge of the package
- L_3 : Distance from the center of the gate to the edge of the package
- L_4 : Distance from the center of the gate to the edge of the package
- L : Distance from the center of the gate to the edge of the package
- L_1 : Distance from the center of the gate to the edge of the package
- L_2 : Distance from the center of the gate to the edge of the package
- L_3 : Distance from the center of the gate to the edge of the package
- L_4 : Distance from the center of the gate to the edge of the package
- L : Distance from the center of the gate to the edge of the package
- L_1 : Distance from the center of the gate to the edge of the package
- L_2 : Distance from the center of the gate to the edge of the package
- L_3 : Distance from the center of the gate to the edge of the package
- L_4 : Distance from the center of the gate to the edge of the package
- L : Distance from the center of the gate to the edge of the package
- L_1 : Distance from the center of the gate to the edge of the package
- L_2 : Distance from the center of the gate to the edge of the package
- L_3 : Distance from the center of the gate to the edge of the package
- L_4 : Distance from the center of the gate to the edge of the package
- L : Distance from the center of the gate to the edge of the package
- L_1 : Distance from the center of the gate to the edge of the package
- L_2 : Distance from the center of the gate to the edge of the package
- L_3 : Distance from the center of the gate to the edge of the package
- L_4 : Distance from the center of the gate to the edge of the package
- L : Distance from the center of the gate to the edge of the package
- L_1 : Distance from the center of the gate to the edge of the package
- L_2 : Distance from the center of the gate to the edge of the package
- L_3 : Distance from the center of the gate to the edge of the package
- L_4 : Distance from the center of the gate to the edge of the package
- L : Distance from the center of the gate to the edge of the package
- L_1 : Distance from the center of the gate to the edge of the package
- L_2 : Distance from the center of the gate to the edge of the package
- L_3 : Distance from the center of the gate to the edge of the package
- L_4 : Distance from the center of the gate to the edge of the package
- L : Distance from the center of the gate to the edge of the package
- L_1 : Distance from the center of the gate to the edge of the package
- L_2 : Distance from the center of the gate to the edge of the package
- L_3 : Distance from the center of the gate to the edge of the package
- L_4 : Distance from the center of the gate to the edge of the package
- L : Distance from the center of the gate to the edge of the package
- L_1 : Distance from the center of the gate to the edge of the package
- L_2 : Distance from the center of the gate to the edge of the package
- L_3 : Distance from the center of the gate to the edge of the package
- L_4 : Distance from the center of the gate to the edge of the package
- L : Distance from the center of the gate to the edge of the package
- L_1 : Distance from the center of the gate to the edge of the package
- L_2 : Distance from the center of the gate to the edge of the package
- L_3 : Distance from the center of the gate to the edge of the package
- L_4 : Distance from the center of the gate to the edge of the package
- L : Distance from the center of the gate to the edge of the package
- L_1 : Distance from the center of the gate to the edge of the package
- L_2 : Distance from the center of the gate to the edge of the package
- L_3 : Distance from the center of the gate to the edge of the package
- L_4 : Distance from the center of the gate to the edge of the package
- L : Distance from the center of the gate to the edge of the package
- L_1 : Distance from the center of the gate to the edge of the package
- L_2 : Distance from the center of the gate to the edge of the package
- L_3 : Distance from the center of the gate to the edge of the package
- L_4 : Distance from the center of the gate to the edge of the package
- L : Distance from the center of the gate to the edge of the package
- L_1 : Distance from the center of the gate to the edge of the package
- L_2 : Distance from the center of the gate to the edge of the package
- L_3 : Distance from the center of the gate to the edge of the package
- L_4 : Distance from the center of the gate to the edge of the package
- L : Distance from the center of the gate to the edge of the package
- L_1 : Distance from the center of the gate to the edge of the package
- L_2 : Distance from the center of the gate to the edge of the package
- L_3 : Distance from the center of the gate to the edge of the package
- L_4 : Distance from the center of the gate to the edge of the package
- L : Distance from the center of the gate to the edge of the package
- L_1 : Distance from the center of the gate to the edge of the package
- L_2 : Distance from the center of the gate to the edge of the package
- L_3 : Distance from the center of the gate to the edge of the package
- L_4 : Distance from the center of the gate to the edge of the package
- L : Distance from the center of the gate to the edge of the package
- L_1 : Distance from the center of the gate to the edge of the package
- L_2 : Distance from the center of the gate to the edge of the package
- L_3 : Distance from the center of the gate to the edge of the package
- L_4 : Distance from the center of the gate to the edge of the package
- L : Distance from the center of the gate to the edge of the package
- L_1 : Distance from the center of the gate to the edge of the package
- L_2 : Distance from the center of the gate to the edge of the package
- L_3 : Distance from the center of the gate to the edge of the package
- L_4 : Distance from the center of the gate to the edge of the package
- L : Distance from the center of the gate to the edge of the package
- L_1 : Distance from the center of the gate to the edge of the package
- L_2 : Distance from the center of the gate to the edge of the package
- L_3 : Distance from the center of the gate to the edge of the package
- L_4 : Distance from the center of the gate to the edge of the package
- L : Distance from the center of the gate to the edge of the package
- L_1 : Distance from the center of the gate to the edge of the package
- L_2 : Distance from the center of the gate to the edge of the package
- L_3 : Distance from the center of the gate to the edge of the package
- L_4 : Distance from the center of the gate to the edge of the package
- L : Distance from the center of the gate to the edge of the package
- L_1 : Distance from the center of the gate to the edge of the package
- L_2 : Distance from the center of the gate to the edge of the package
- L_3 : Distance from the center of the gate to the edge of the package
- L_4 : Distance from the center of the gate to the edge of the package
- L : Distance from the center of the gate to the edge of the package
- L_1 : Distance from the center of the gate to the edge of the package
- L_2 : Distance from the center of the gate to the edge of the package
- L_3 : Distance from the center of the gate to the edge of the package
- L_4 : Distance from the center of the gate to the edge of the package
- L : Distance from the center of the gate to the edge of the package
- L_1 : Distance from the center of the gate to the edge of the package
- L_2 : Distance from the center of the gate to the edge of the package
- L_3 : Distance from the center of the gate to the edge of the package
- L_4 : Distance from the center of the gate to the edge of the package
- L : Distance from the center of the gate to the edge of the package
- L_1 : Distance from the center of the gate to the edge of the package
- L_2 : Distance from the center of the gate to the edge of the package
- L_3 : Distance from the center of the gate to the edge of the package
- L_4 : Distance from the center of the gate to the edge of the package
- L : Distance from the center of the gate to the edge of the package
- L_1 : Distance from the center of the gate to the edge of the package
- L_2 : Distance from the center of the gate to the edge of the package
- L_3 : Distance from the center of the gate to the edge of the package
- L_4 : Distance from the center of the gate to the edge of the package
- L : Distance from the center of the gate to the edge of the package
- L_1 : Distance from the center of the gate to the edge of the package
- L_2 : Distance from the center of the gate to the edge of the package
- L_3 : Distance from the center of the gate to the edge of the package
- L_4 : Distance from the center of the gate to the edge of the package
- L : Distance from the center of the gate to the edge of the package
- L_1 : Distance from the center of the gate to the edge of the package
- L_2 : Distance from the center of the gate to the edge of the package
- L_3 : Distance from the center of the gate to the edge of the package
- L_4 : Distance from the center of the gate to the edge of the package
- L : Distance from the center of the gate to the edge of the package
- L_1 : Distance from the center of the gate to the edge of the package
- L_2 : Distance from the center of the gate to the edge of the package
- L_3 : Distance from the center of the gate to the edge of the package
- L_4 : Distance from the center of the gate to the edge of the package
- L : Distance from the center of the gate to the edge of the package
- L_1 : Distance from the center of the gate to the edge of the package
- L_2 : Distance from the center of the gate to the edge of the package
- L_3 : Distance from the center of the gate to the edge of the package
- L_4 : Distance from the center of the gate to the edge of the package
- L : Distance from the center of the gate to the edge of the package
- L_1 : Distance from the center of the gate to the edge of the package
- L_2 : Distance from the center of the gate to the edge of the package
- L_3 : Distance from the center of the gate to the edge of the package
- L_4 : Distance from the center of the gate to the edge of the package
- L : Distance from the center of the gate to the edge of the package
- L_1 : Distance from the center of the gate to the edge of the package
- L_2 : Distance from the center of the gate to the edge of the package
- L_3 : Distance from the center of the gate to the edge of the package
- L_4 : Distance from the center of the gate to the edge of the package
- L : Distance from the center of the gate to the edge of the package
- L_1 : Distance from the center of the gate to the edge of the package
- L_2 : Distance from the center of the gate to the edge of the package
- L_3 : Distance from the center of the gate to the edge of the package
- L_4 : Distance from the center of the gate to the edge of the package
- L : Distance from the center of the gate to the edge of the package
- L_1 : Distance from the center of the gate to the edge of the package
- L_2 : Distance from the center of the gate to the edge of the package
- L_3 : Distance from the center of the gate to the edge of the package
- L_4 : Distance from the center of the gate to the edge of the package
- L : Distance from the center of the gate to the edge of the package
- L_1 : Distance from the center of the gate to the edge of the package
- L_2 : Distance from the center of the gate to the edge of the package
- L_3 : Distance from the center of the gate to the edge of the package
- L_4 : Distance from the center of the gate to the edge of the package
- L : Distance from the center of the gate to the edge of the package
- L_1 : Distance from the center of the gate to the edge of the package
- L_2 : Distance from the center of the gate to the edge of the package
- L_3 : Distance from the center of the gate to the edge of the package
- L_4 : Distance from the center of the gate to the edge of the package
- L : Distance from the center of the gate to the edge of the package
- L_1 : Distance from the center of the gate to the edge of the package
- L_2 : Distance from the center of the gate to the edge of the package
- L_3 : Distance from the center of the gate to the edge of the package
- L_4 : Distance from the center of the gate to the edge of the package
- L : Distance from the center of the gate to the edge of the package
- L_1 : Distance from the center of the gate to the edge of the package
- L_2 : Distance from the center of the gate to the edge of the package
- L_3 : Distance from the center of the gate to the edge of the package
- L_4 : Distance from the center of the gate to the edge of the package
- L : Distance from the center of the gate to the edge of the package
- L_1 : Distance from the center of the gate to the edge of the package
- L_2 : Distance from the center of the gate to the edge of the package
- L_3 : Distance from the center of the gate to the edge of the package
- L_4 : Distance from the center of the gate to the edge of the package
- L : Distance from the center of the gate to the edge of the package
- L_1 : Distance from the center of the gate to the edge of the package
- L_2 : Distance from the center of the gate to the edge of the package
- L_3 : Distance from the center of the gate to the edge of the package
- L_4 : Distance from the center of the gate to the edge of the package
- L : Distance from the center of the gate to the edge of the package
- L_1 : Distance from the center of the gate to the edge of the package
- L_2 : Distance from the center of the gate to the edge of the package
- L_3 : Distance from the center of the gate to the edge of the package
- L_4 : Distance from the center of the gate to the edge of the package
- L : Distance from the center of the gate to the edge of the package
- L_1 : Distance from the center of the gate to the edge of the package
- L_2 : Distance from the center of the gate to the edge of the package
- L_3 : Distance from the center of the gate to the edge of the package
- L_4 : Distance from the center of the gate to the edge of the package
- L : Distance from the center of the gate to the edge of the package
- L_1 : Distance from the center of the gate to the edge of the package
- L_2 : Distance from the center of the gate to the edge of the package
- L_3 : Distance from the center of the gate to the edge of the package
- L_4 : Distance from the center of the gate to the edge of the package
- L : Distance from the center of the gate to the edge of the package
- L_1 : Distance from the center of the gate to the edge of the package
- L_2 : Distance from the center of the gate to the edge of the package
- L_3 : Distance from the center of the gate to the edge of the package
- L_4 : Distance from the center of the gate to the edge of the package
- L : Distance from the center of the gate to the edge of the package
- L_1 : Distance from the center of the gate to the edge of the package
- L_2 : Distance from the center of the gate to the edge of the package
- L_3 : Distance from the center of the gate to the edge of the package
- L_4 : Distance from the center of the gate to the edge of the package
- L : Distance from the center of the gate to the edge of the package
- L_1 : Distance from the center of the gate to the edge of the package
- L_2 : Distance from the center of the gate to the edge of the package
- L_3 : Distance from the center of the gate to the edge of the package
- L_4 : Distance from the center of the gate to the edge of the package
- L : Distance from the center of the gate to the edge of the package
- L_1 : Distance from the center of the gate to the edge of the package
- L_2 : Distance from the center of the gate to the edge of the package
- L_3 : Distance from the center of the gate to the edge of the package
- L_4 : Distance from the center of the gate to the edge of the package
- L : Distance from the center of the gate to the edge of the package
- L_1 : Distance from the center of the gate to the edge of the package
- L_2 : Distance from the center of the gate to the edge of the package
- L_3 : Distance from the center of the gate to the edge of the package
- L_4 : Distance from the center of the gate to the edge of the package
- L : Distance

PLUS220 (IXFV) Outline



SYM	INCHES		MILLIMETER	
	MIN	MAX	MIN	MAX
A	.169	.185	4.30	4.70
A1	.028	.035	0.70	0.90
A2	.098	.118	2.50	3.00
b	.035	.047	0.90	1.20
b1	.080	.095	2.03	2.41
b2	.054	.064	1.37	1.63
c	.028	.035	0.70	0.90
D	.551	.591	14.00	15.00
D1	.512	.539	13.00	13.70
E	.394	.433	10.00	11.00
E1	.331	.346	8.40	8.80
e	.100BSC 2.54 BSC			
L	.512	.551	13.00	14.00
L1	.118	.138	3.00	3.50
L2	.035	.051	0.90	1.30
L3	.047	.059	1.20	1.50

TO-247 (IXFH) Outline

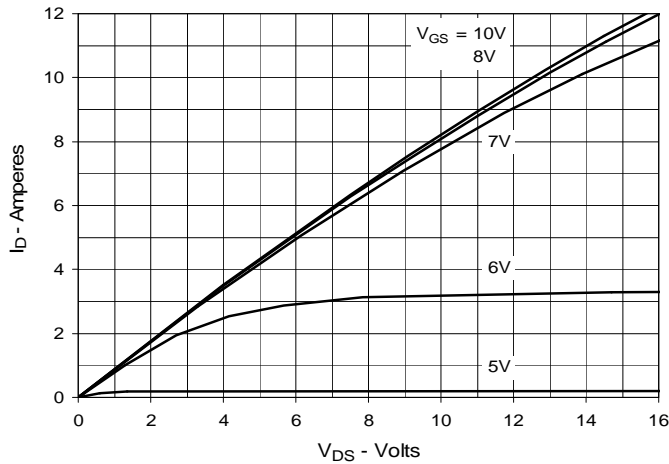


Dim.	Millimeter		Inches	
	Min.	Max.	Min.	Max.
A	4.7	5.3	.185	.209
A1	2.2	2.54	.087	.102
A2	2.2	2.6	.059	.098
b	1.0	1.4	.040	.055
b1	1.65	2.13	.065	.084
b2	2.87	3.12	.113	.123
C	.4	.8	.016	.031
D	20.80	21.46	.819	.845
E	15.75	16.26	.610	.640
e	5.20	5.72	0.205	0.225
L	19.81	20.32	.780	.800
L1		4.50		.177
ØP	3.55	3.65	.140	.144
Q	5.89	6.40	0.232	0.252
R	4.32	5.49	.170	.216
S	6.15	BSC	242	BSC

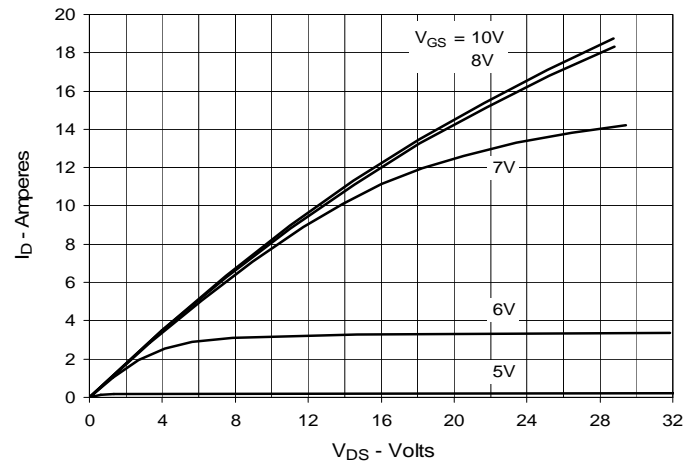
IXYS reserves the right to change limits, test conditions, and dimensions.

IXYS MOSFETs and IGBTs are covered by one or more of the following U.S. patents:	4,835,592	4,931,844	5,049,961	5,237,481	6,162,665	6,404,065 B1	6,683,344	6,727,585	7,005,734 B2	7,157,338 B2
	4,850,072	5,017,508	5,063,307	5,381,025	6,259,123 B1	6,534,343	6,710,405 B2	6,759,692	7,063,975 B2	
	4,881,106	5,034,796	5,187,117	5,486,715	6,306,728 B1	6,583,505	6,710,463	6,771,478 B2	7,071,537	

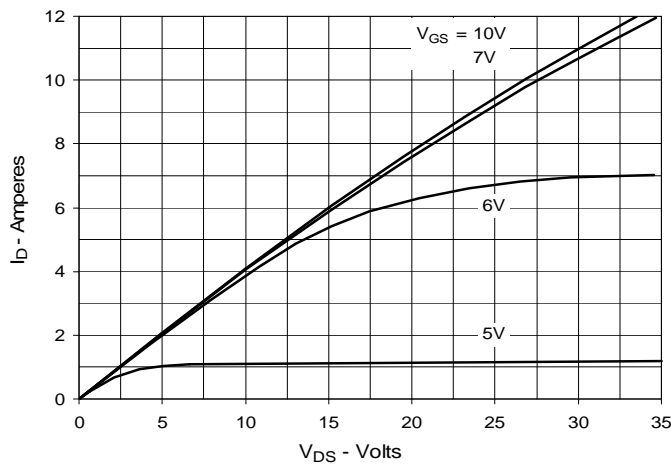
**Fig. 1. Output Characteristics
@ 25°C**



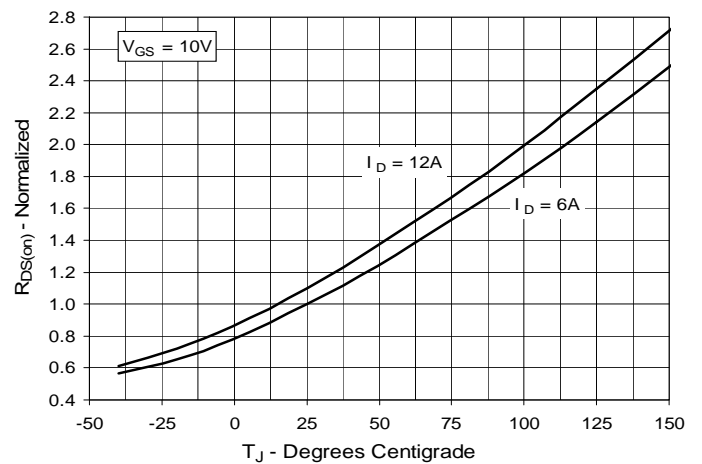
**Fig. 2. Extended Output Characteristics
@ 25°C**



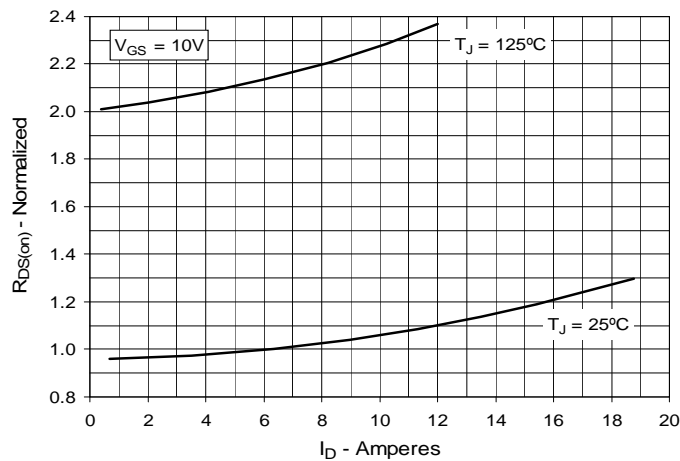
**Fig. 3. Output Characteristics
@ 125°C**



**Fig. 4. $R_{DS(on)}$ Normalized to $I_D = 6A$ Value
vs. Junction Temperature**



**Fig. 5. $R_{DS(on)}$ Normalized to $I_D = 6A$ Value
vs. Drain Current**



**Fig. 6. Maximum Drain Current vs.
Case Temperature**

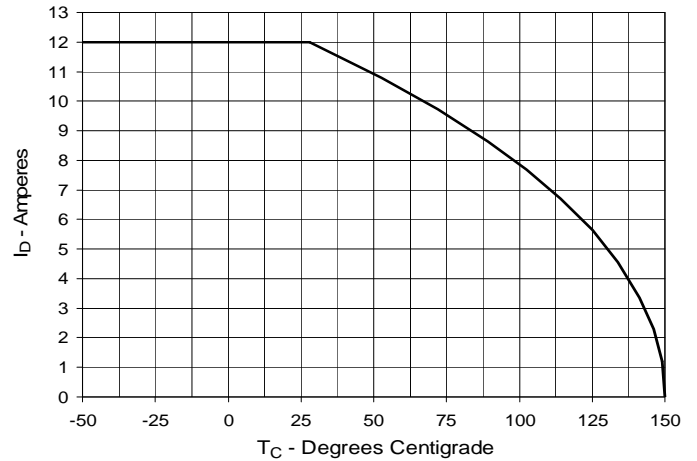


Fig. 7. Input Admittance

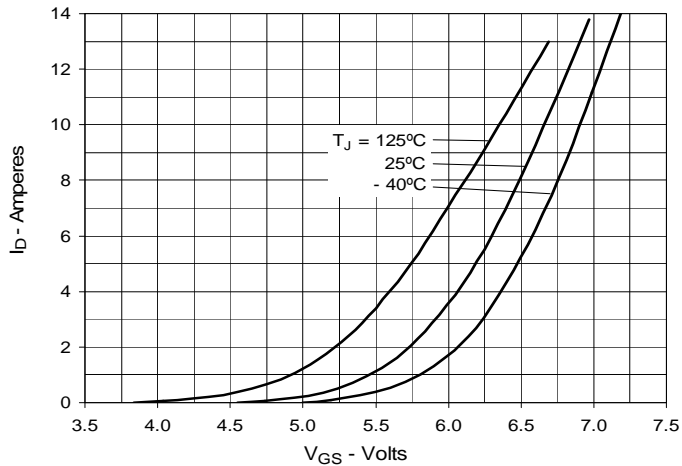


Fig. 8. Transconductance

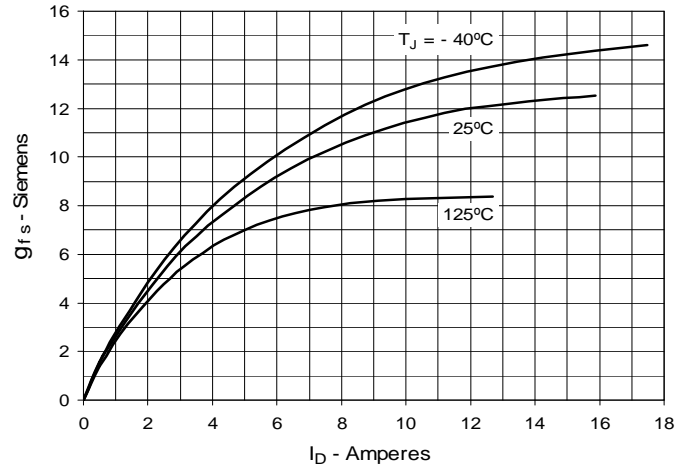


Fig. 9. Forward Voltage Drop of Intrinsic Diode

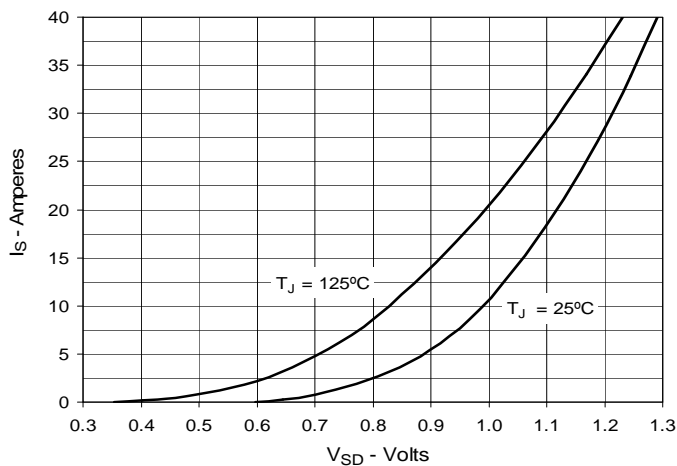


Fig. 10. Gate Charge

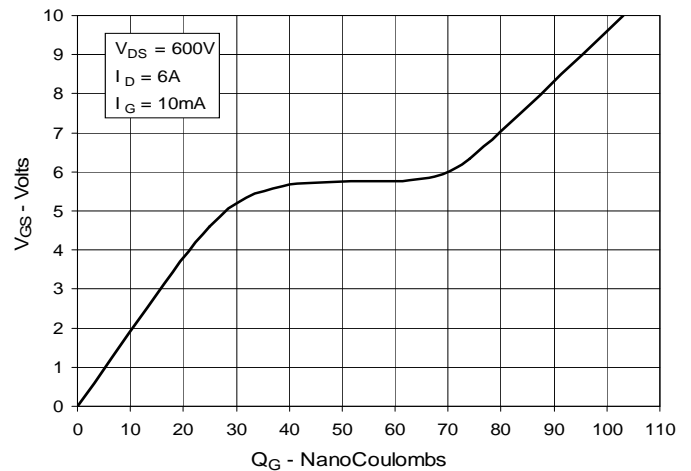


Fig. 11. Capacitance

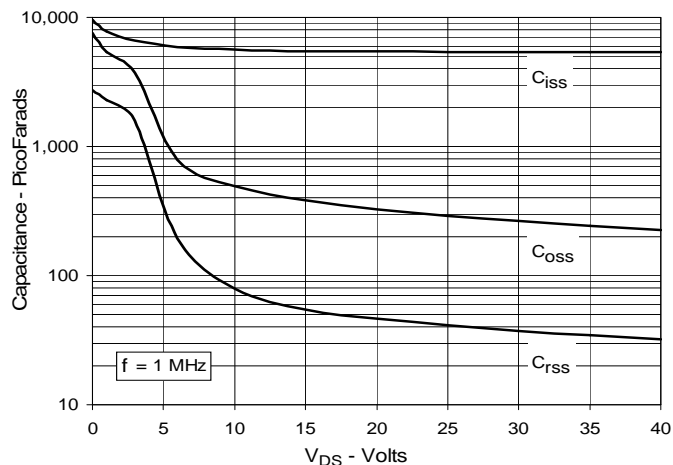


Fig. 12. Maximum Transient Thermal Impedance

