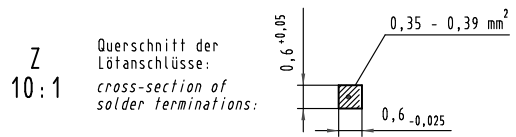
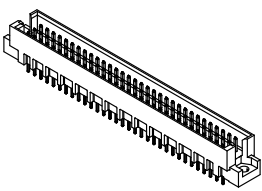
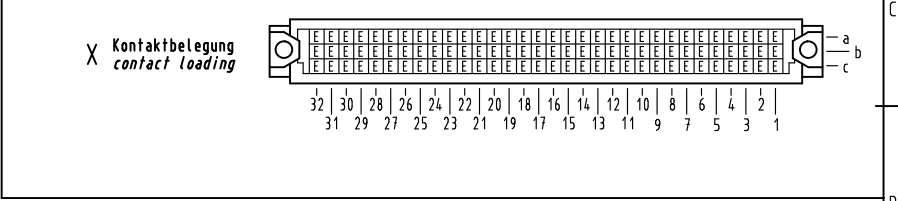
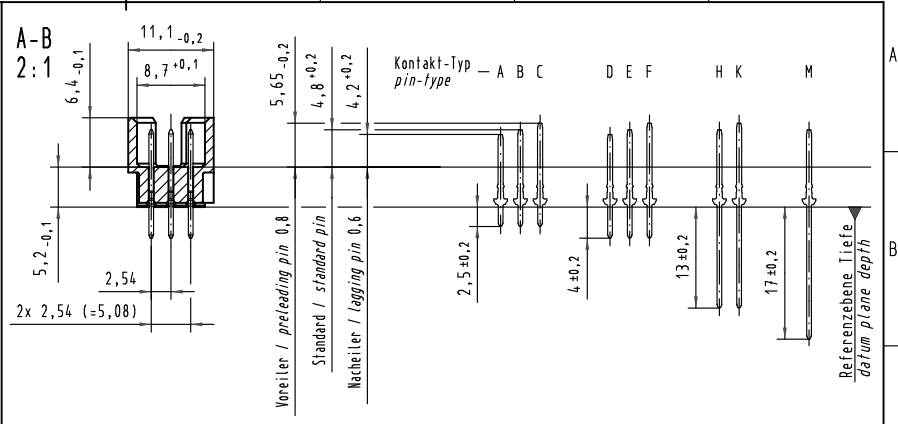
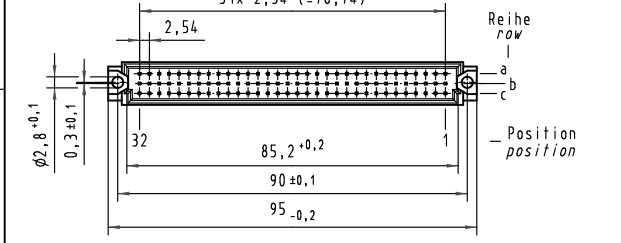
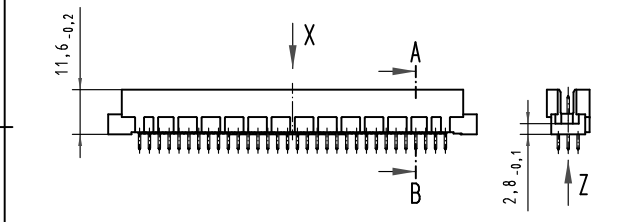
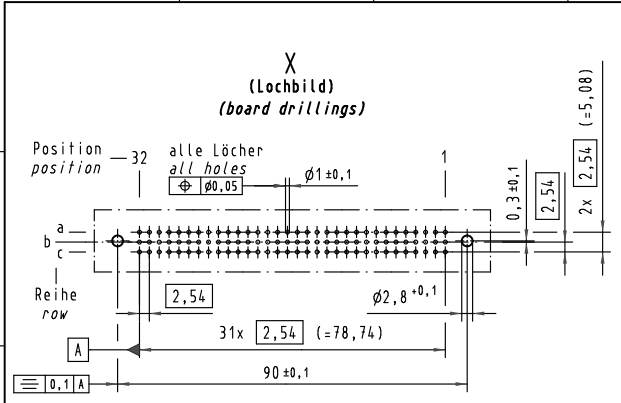


Alle Rechte vorbehalten. All rights reserved.



09 73 196 5903	-	min. 0,76µm (30µin) Au über/over min. 1,27µm (50µin) Ni
09 73 196 1903	3	Au über/over Ni
09 73 196 6903	2	Au über/over Ni
09 73 196 2903	1	Au über/over Ni
Bestell-Nr. part-no.	Anforderungsstufe nach IEC performance level acc. to IEC	Kontaktoberfläche contact plating

ALL Dimensions in mm Original Size DIN A 3		Techn. Character.		Nicht tolerierte Maß/Free size Tolerances IEC 60603-2	
Mod.	Dat.	Name	Maßstab/Scale	Bauform R Messerleiste Einlötl 4,0, 96pol. type R male connector solder 4,0, 96pol.	
34650	10.09.07	Hage.	1:1		
28737			2:1		
			10:1		
HARTING Electronics GmbH & Co. KG D-32339 ESPELKAMP					TB 09 73 196 x903
				Sub.	

Blatt/page