

Series **D xx P 24A 6 xx 09 LF**

Number of contacts  
09 , 15 , 25 , 37 , 50

Contacts  
P : Pin

Termination

Code	Type	Foot Print/Pitch	Length of termination	PCB thickness
24A	Straight version	6 / 2.84mm	2	1.6

Plating  
6 : 500 Mating / Unmating Mini

Packaging specification  
Tray

See Note RoHS

**NOTE RoHS INFORMATION**

- The "LF" product meet european union Directives and other country regulations as described in GS-22-008.
- The housing will withstand exposure to 260° peak temperature for 30 seconds in a convection , infra-red or vapor reflow oven. See application notes/procedures if are available.
- Termination plating spec: 1.27µ Nickel mini, 2.5 to 7.5µ Sn(pure mate)
- Shell plating : Nickel bright
- Accessories : Sn pure bright
- Packaging spec ; See GS-14-920

**Mounting Options**

RL	Insert M3
RV	Female Screw UNC 4-40
RX	Insert UNC 4-40

**Product Specification**

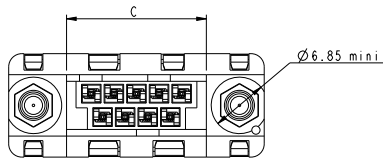
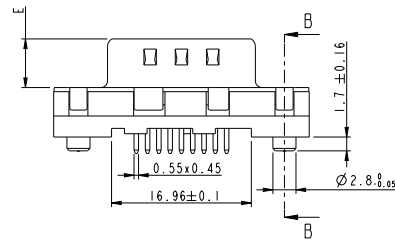
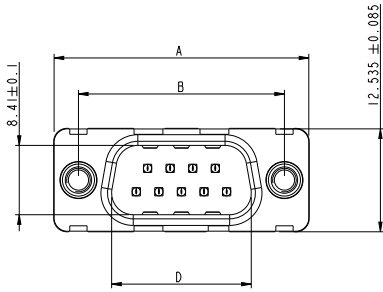
see : GS-12-372

**Packaging Specification**

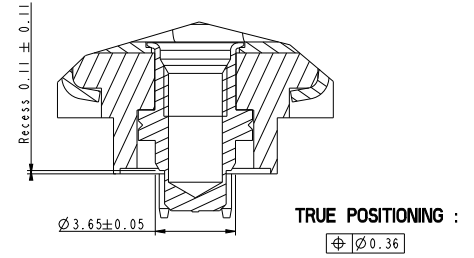
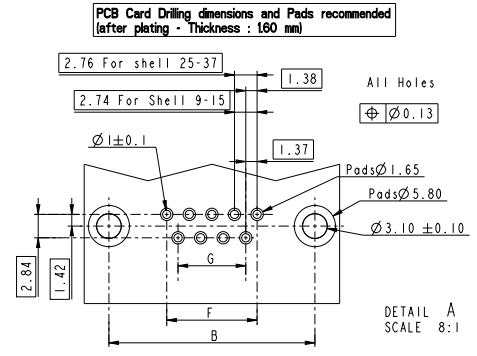
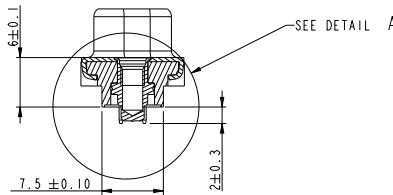
See GS-14-1061

lfr	ecn no	dr	date
A	-	HL	03/02/06
B	LS06-0040	PCR	23/03/06
C	LS06-0105	HLE	25/07/06
D	LS06-0220	PCR	2006/12/21
E	LS07-0050	HLE	2007/03/02
F	110-0120	NG	2010-05-27
G	110-0197	NG	2010-10-14

www.fciconnect.com		surface ISO 1302	tolerance std ISO 406 ISO 1101	projection mm
		TOLERANCES UNLESS OTHERWISE SPECIFIED		
Dr	P. CRON	03/02/06	ANGULAR	0.X ±0.3
Eng	H. LEGALLIC	03/02/06	LINEAR	0.XX ±0.1
Chr	NIRMAL G	2010-10-14	0° ±2°	0.XXX ±0.05
Appr	SUDHIR V	2010-10-14	Product family	SUB DELTA D PIP
title				size A3
SUB DELTA D PIP MALE				Scale 2:1
straight for tray				ECN 110-0197
catalog no				Spec ref -
SEE TABLE				ECN 110-0197
CUSTOMER COPY				Rev. G
sheet 1 of 3				dwg no C01-8646-0878



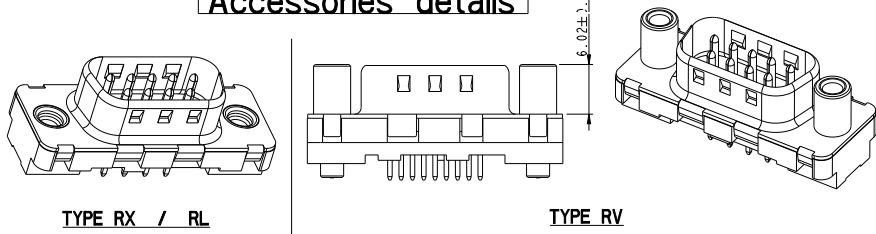
SECTION B-B



SHELL	P/N LEAD FREE	A ±0.38	B ±0.10	C ±0.10	D +0.25 0	E +0.15 0	F	G
09	D09P24A6xx09LF	30.81	24.99	16.96	16.79	5.9	10.96	8.22
15	D15P24A6xx09LF	39.14	33.32	25.18	25.12	5.9	19.18	16.44
25	D25P24A6xx09LF	53.03	47.04	39.12	38.84	5.7	33.12	30.36
37	D37P24A6xx09LF	69.32	63.50	55.68	55.30	5.7	49.68	46.92

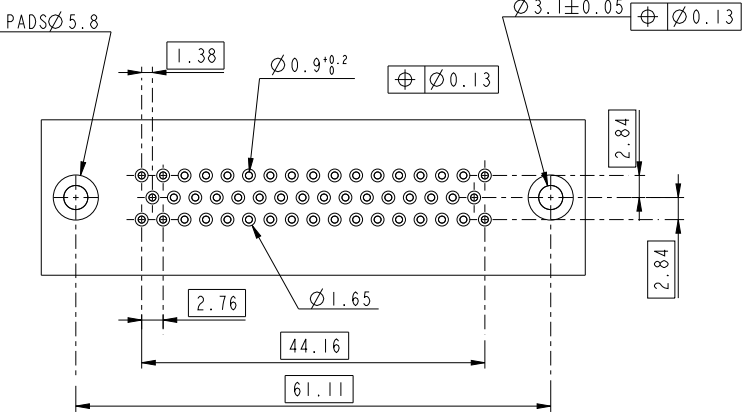
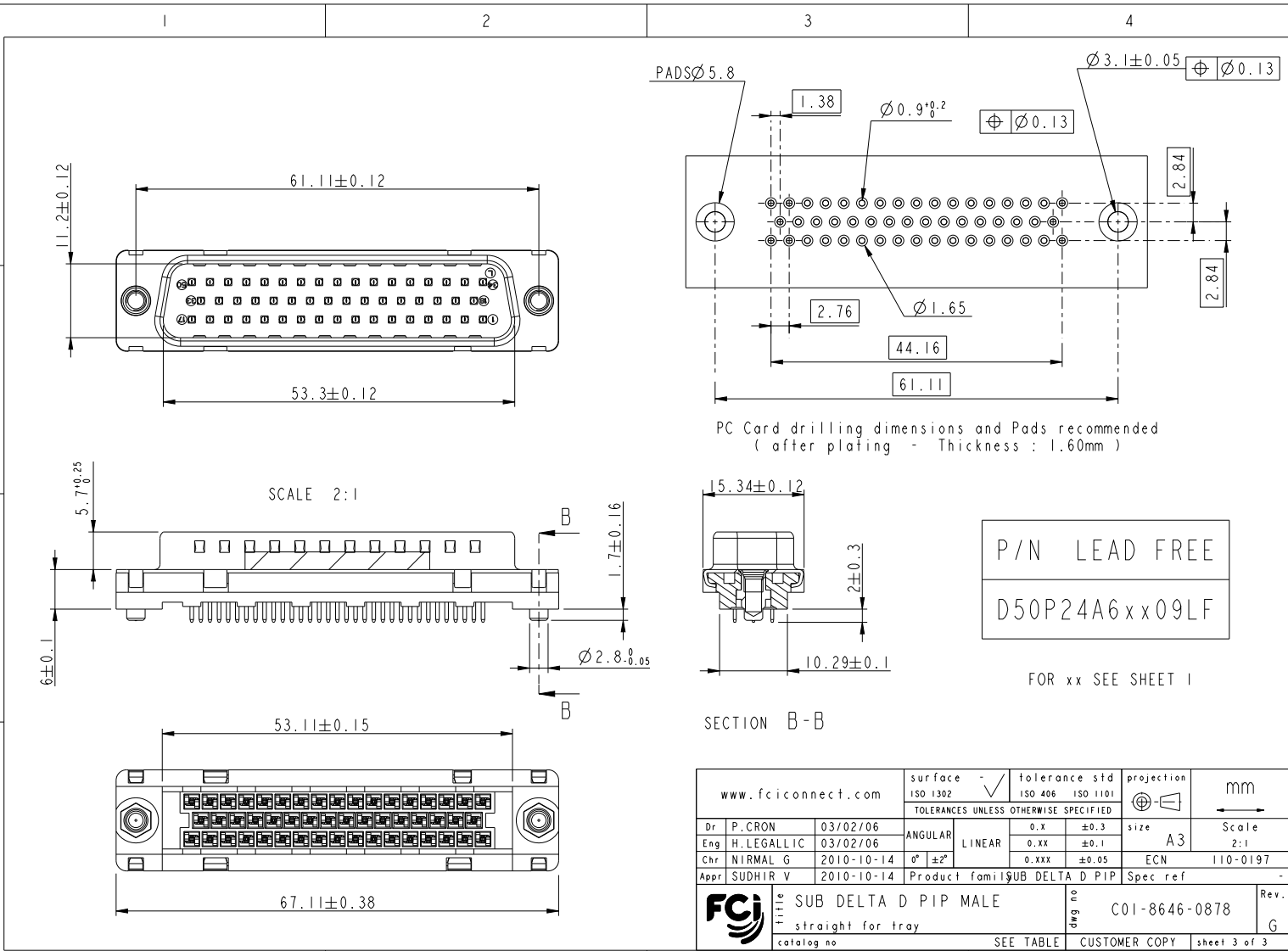
FOR xx SEE SHEET 1

Accessories details



www.fciconnect.com		surface	tolerance std	projection	mm
		ISO 1302	ISO 406	ISO 1101	
TOLERANCES UNLESS OTHERWISE SPECIFIED					
Dr	P. CRON	03/02/06	ANGULAR	0.1	±0.3
Eng	H. LEGALLIC	03/02/06	LINEAR	0.1	±0.1
Chr	NIRMAL G	2010-10-14	°	±2°	
Appr	SUDHIR V	2010-10-14	Product fami	IGUB DELTA D PIP	Spec ref
FCI SUB DELTA D PIP MALE				2	C01-8646-0878
Straight for tray				SEE TABLE	CUSTOMER COPY
category no				8	sheet 2 of 3

Copyright FCI.



PC Card drilling dimensions and Pads recommended  
( after plating - Thickness : 1.60mm )

P/N LEAD FREE  
D50P24A6x09LF

FOR xx SEE SHEET 1

www.fciconnect.com		surface ISO 1302	tolerance std ISO 406 ISO 1101	projection mm
		TOLERANCES UNLESS OTHERWISE SPECIFIED		mm
Dr	P. CRON	03/02/06	ANGULAR	0.X ±0.3
Eng	H. LEGALLIC	03/02/06	LINEAR	0.XX ±0.1
Chr	NIRMAL G	2010-10-14	0° ±2°	0.XXX ±0.05
Appr	SUDHIR V	2010-10-14	Product fami	SUB DELTA D PIP
title		SUB DELTA D PIP MALE		spec ref
straight for tray		C01-8646-0878		Rev.
catalog no		SEE TABLE	CUSTOMER COPY	sheet 3 of 3

REV F - 2006 04-11