

Size	Part Number	ØA	B maxi	C maxi
10	UTO10AC	16.30	21.60	31.00
12	UTO12AC	19.40	25.00	31.50
14	UTO14AC	22.50	27.40	34.00
16	UTO16AC	25.80	29.40	34.00
18	UTO18AC	29.20	35.20	31.40
20	UTO20AC	32.50	35.20	32.00
22	UTO22AC	35.70	41.10	31.00
24	UTO24AC	38.85	42.40	31.00

Notes :

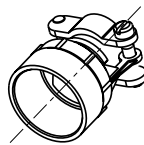
Part number: To see table
Backshell conform to MIL-C 26482 SI

Material :

- ① boot: rubber
- ② Backshell body: nickel plated copper alloy
- ③ Clamp: nickel plated steel
- ④ Screw: stainless steel

Performance Characteristics :

Operating temperature: -40°C up to 105°C
Corrosion salt spray: 96 hours



FOR INFORMATION

B	13/02/04	--	Add size 10, 12, 14, 18 and 20	--
ISS	DATE	Latest modification - by:	BERGER L	MOD N°
Designed by: C. PROVOST		Date: 01/09/03	Type of drawing: CUSTOMER	
Checked by: SEE DISTRIBUTION LIST		Date: SEE DISTRIBUTION LIST		
TITLE		Straight cable clamp UTOW CONNECTORS		
Scale	General angular	MATERIAL --		
3/1	Tolerances: ± --			
General linear	General machining	surface texture	Geometrical Tolerances	PROJECT
	Tolerances: ±0.1	Ra 3.2	See NF E 04-552	MSK I
		SOURIAU Route Nationale 23 72470 CHAMPAGNE Tel. (33)02.43.54.35.00		This document is the property of SOURIAU. It must not be reproduced or communicated without permission.
FORMAT	SOURIAU DRG N° UTOXXAC-C01			SHEET
A3				1 / 1