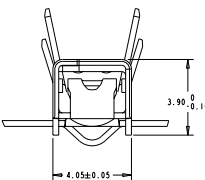
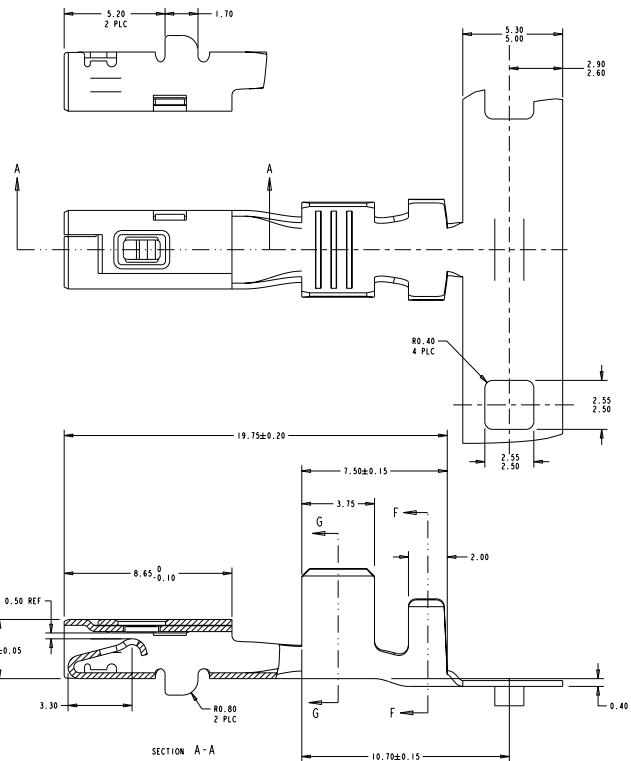


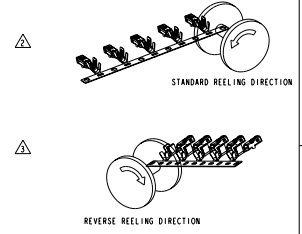
DATE MANUFACTURE REVISIONS FOR PUBLICATIONS ALL RIGHTS RESERVED

DUAL CRIMP TABLE	
PART NO	WIRE SIZE
1326030-9	0.35±0.35
AND	0.35±0.75
1-1326030-1	0.5±1.0
AND	0.5±1.5
1-1326030-0	0.5±1.5
AND	0.75±0.75
1-1326030-2	0.75±1.0
AND	0.75±1.5
	1.0±1.0
	1.0±1.5

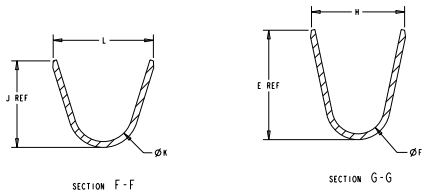


REV	DATE	DESCRIPTION	BY	CHK	APP
00		REVISED PER ECO-11-005030			

△ MATERIAL: 0.30 THICK COPPER ALLOY, PREPLATED WITH 0.0008 MINIMUM THICK REFLOW TIN OR BRIGHT TIN (ELV COMPLIANT).  
 △ ALTERNATE MATERIAL: 0.30 THICK COPPER ALLOY, PREPLATED WITH 0.0008 MINIMUM THICK BRIGHT TIN (ELV COMPLIANT).



5. QUALIFICATION OF THE CRIMP APPLICATION TOOLING SHALL BE CONTROLLED BY THE REQUIREMENTS ESTABLISHED UNDER USCAR 21.  
 6. LOOSE END SPLICING TO BE USED.



REELING	L	ØK	J	H	ØF	E	WIRE SIZE	PART NO.
△	4.6	1.80	5.35	3.9	1.70	3.88	0.35	1-1326030-2
△	3.6	1.40	4.32	3.3	1.30	2.76	0.35	1-1326030-1
△	5.2	3.20	4.22	4.7	2.70	5.25	12 AWG	1326030-8
△	3.8	1.80	3.14	3.9	1.70	3.88	14-16 AWG	1326030-7
△	3.1	1.40	2.55	3.3	1.30	2.76	18-20 AWG	1326030-6
△	2.6	1.00	2.04	2.5	0.90	2.11	22 AWG	1326030-5
△	2.6	1.00	2.04	2.5	0.90	2.11	22 AWG	1326030-4
△	2.6	1.00	2.04	2.5	0.90	2.11	22 AWG	1326030-3
△	2.6	1.00	2.04	2.5	0.90	2.11	22 AWG	1326030-2
△	2.6	1.00	2.04	2.5	0.90	2.11	22 AWG	1326030-1

THIS DRAWING IS A CONTROLLED DOCUMENT. © STRASBURG 284P899

DATE: 11-13-2013

REV: 00

DESCRIPTION: 2.8mm RECEPTACLE, UNSEALED

SIZE: 114-1326030

REVISED PER ECO-11-005030

CUSTOMER DRAWING