

4

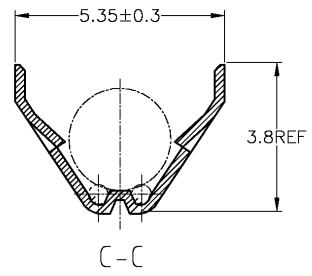
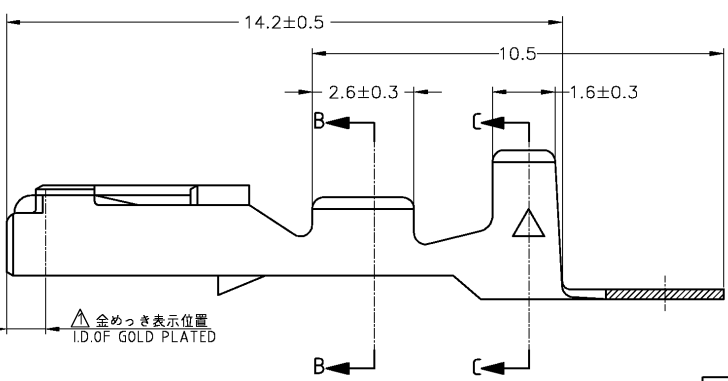
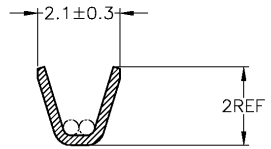
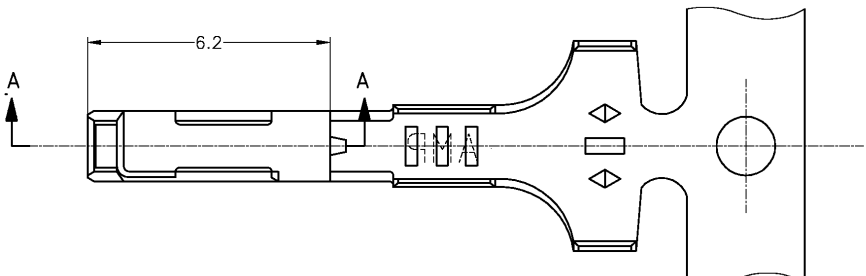
3

2

1

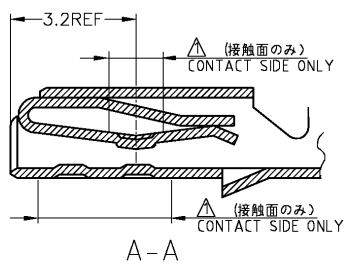
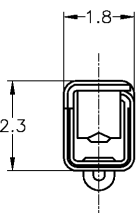
THIS DRAWING IS UNPUBLISHED. RELEASED FOR PUBLICATION
 COPYRIGHT BY TYCO ELECTRONICS CORPORATION. ALL RIGHTS RESERVED.

LOC	DIST	REVISIONS			
P	LTR	DESCRIPTION	DATE	DWN	APVD
01	REVISED	ECR-06-027725	29NOV06	MS	KB



△ SELECTIVE GOLD
 2. APPLICATION SPEC NO. 114-5111

△ 部分金めっき
 2. 取付適用規格番号 114-5111



175061-2	SELECTIVE GOLD 部分金めっき	173716-2
175061-1	PRE-TINNED 錫めっき済	173716-1
LOOSE PIECE NO.	バラ状端子型番	AMP 製品型番
	FINISH 仕上げ	PART NUMBER 製品型番
	WIRE RANGE (包含電線断面積) 0.3~0.5mm ² (AWG#22~20)	INSULATION DIA. (装電外径) 1.8~2 mmφ

THIS DRAWING IS A CONTROLLED DOCUMENT.

DIMENSIONS: 単位: 精 mm	TOLERANCES UNLESS OTHERWISE SPECIFIED: — 製造公差	DWN M. SUGAWARA 29NOV06	Tyco Electronics AMP K.K. Kawasaki, Japan
0 PLC ±	1 PLC ±	CHK K. BETSUI 29NOV06	
2 PLC ±	3 PLC ±	APVD K. BETSUI 29NOV06	NAME 名称
4 PLC ±	ANGLES ±	PRODUCT SPEC 製品規格	040 SERIES RECEPTACLE CONTACT
MATERIAL 材料 THICKNESS KLF-5 板厚 0.25		APPLICATION SPEC 取付適用規格	SIZE A3
FINISH 仕上 SEE TABLE 表参照		WEIGHT —	CAGE CODE 00779
TOLERANCES UNLESS OTHERWISE SPECIFIED: — 製造公差 1φ ±0.2 2φ ±0.25 3φ ±0.3 ANGLE ±3°		DRAWING NO 173716	RESTRICTED TO —
		CUSTOMER DRAWING	SCALE 尺度 10:1
		SHEET 1 OF 1	REV Q1