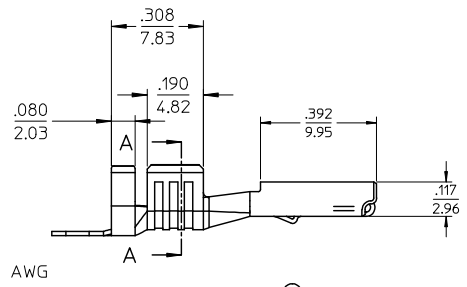
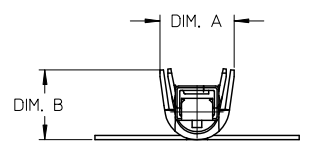
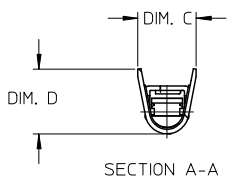
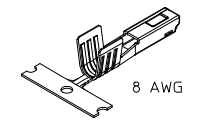
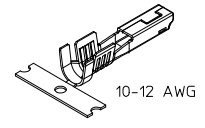
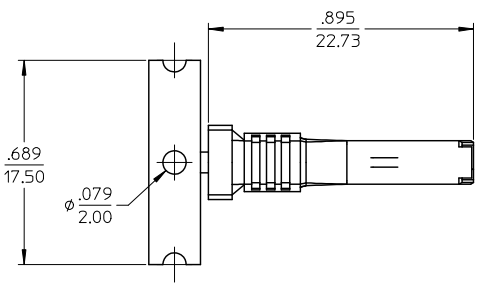
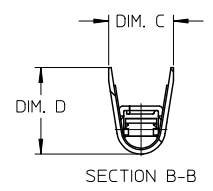
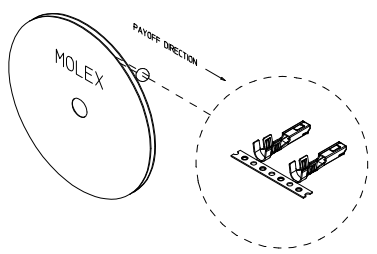


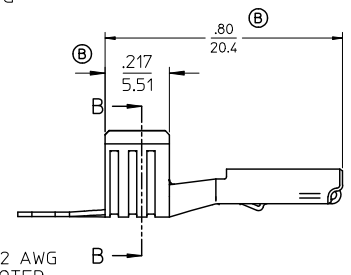
	12	11	10	9	8	7	6	5	4	3	2	19434
STRIP MATERIAL NUMBER	LOOSE PIECE MATERIAL NUMBER	AWG SIZE	DIM. 'A'	DIM. 'B'	DIM. 'C'	DIM. 'D'						
194340001	194340003	10-12	.250/6.35	.236/6.00	.197/5.00	.220/5.60						
194340002	194340004	8	N/A	N/A	.240/6.10	.276/7.00						



10-12 AWG



8 AWG
SAME AS 10-12 AWG
EXCEPT AS NOTED



- NOTES:
- MATERIAL: COPPER ALLOY.
 - FINISH: PREPLATED AND REFLOWED OVERALL.
100μ TIN OVER 50μ NICKEL, MINIMUM.
 - TERMINALS FOR USE WITH 19432**** RECEPTACLE HOUSING ASSEMBLY.
 - PRODUCT SPECIFICATION: PS-19431-001.
 - PACKAGING SPECIFICATION: PK-19434-001.
 - APPLICATION TOOLING AND CRIMP SPECIFICATIONS: CONSULT FACTORY

UPDATED DIMS & NOTES EC NO: WNA2009-0796 DRW: BRUPERT, 2005/10/05 CHKD: JPAWLICK/09/06/04 APPR: RDEROSS, 2009/07/10	QUALITY SYMBOLS	GENERAL TOLERANCES (UNLESS SPECIFIED)	SCALE 4:1	DESIGN UNITS INCH	THIRD ANGLE PROJECTION	REVISE ON CAD ONLY															
	DESCRIPTION FEMALE RECEPTACLE MX150L TERMINAL, 10-12.8 AWG AWG, .098/2.50X.031/0.79	<table border="1"> <tr> <th></th> <th>mm</th> <th>INCH</th> </tr> <tr> <td>4 PLACES</td> <td>± .01</td> <td>± .001</td> </tr> <tr> <td>3 PLACES</td> <td>± .01</td> <td>± .001</td> </tr> <tr> <td>2 PLACES</td> <td>± 0.25</td> <td>± .02</td> </tr> <tr> <td>1 PLACE</td> <td>± 0.5</td> <td>± .05</td> </tr> </table>		mm	INCH	4 PLACES	± .01	± .001	3 PLACES	± .01	± .001	2 PLACES	± 0.25	± .02	1 PLACE	± 0.5	± .05	DIMENSION STYLE IN/MM	DRAWN BY BRUPERT	DATE 01/25/05	TITLE
			mm	INCH																	
		4 PLACES	± .01	± .001																	
3 PLACES	± .01	± .001																			
2 PLACES	± 0.25	± .02																			
1 PLACE	± 0.5	± .05																			
DRAFT WHERE APPLICABLE MUST REMAIN WITHIN DIMENSIONS	ANGULAR ± 3°	APPROVED BY RDEROSS DATE 01/25/05	CHECKED BY JPAWLICK DATE 01/25/05	MOLEX INCORPORATED	MATERIAL NO. SEE CHART DOCUMENT NO. SD-19434-001 SHEET NO. 1 OF 1																
THIS DRAWING CONTAINS INFORMATION THAT IS PROPRIETARY TO MOLEX INCORPORATED AND SHOULD NOT BE USED WITHOUT WRITTEN PERMISSION																					

tb_frame_C-B1
rev. B1 2000/08/01

	11	10	9	8	7	6	5	4	3	2	1
--	----	----	---	---	---	---	---	---	---	---	---