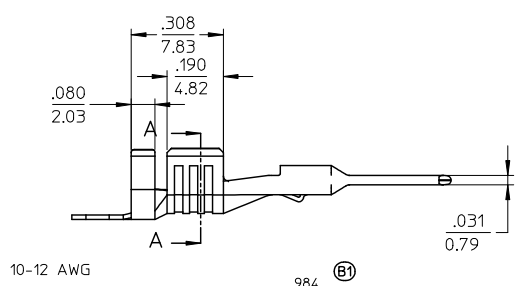
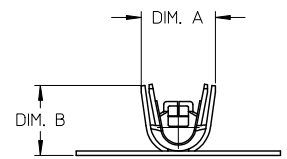
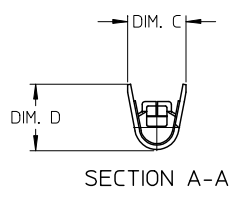
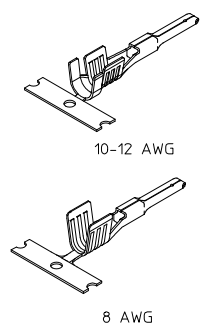
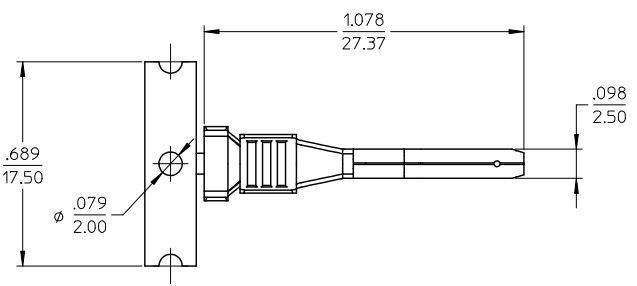
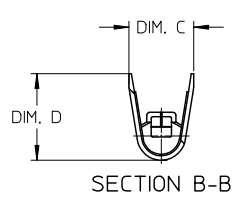
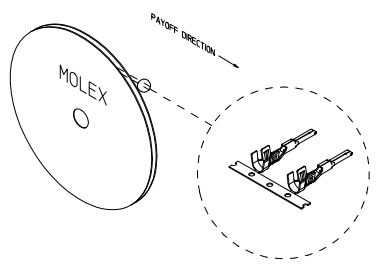


12	11	10	9	8	7	6	5	4	3	2	19431
STRIP MATERIAL NUMBER	LOOSE PIECE MATERIAL NUMBER	AWG SIZE	DIM. 'A'	DIM. 'B'	DIM. 'C'	DIM. 'D'					
194310001	194310016	10-12	.250/6.35	.236/6.00	.197/5.00	.226/5.74					
194310015	194310017	8	N/A	N/A	.240/6.10	.276/7.00					



10-12 AWG



SECTION B-B

8 AWG
SAME AS 10-12 AWG
EXCEPT AS NOTED

UPDATED DIM EC NO: VINA2009-0796 DRW: WJLEUNG, 2009/06/03 CHKD: RDEROSS, 2009/06/04 APPR: RDEROSS, 2009/07/10	QUALITY SYMBOLS	GENERAL TOLERANCES (UNLESS SPECIFIED) <table border="1"> <tr> <th></th> <th>mm</th> <th>INCH</th> </tr> <tr> <td>4 PLACES</td> <td>± .005</td> <td>± .0005</td> </tr> <tr> <td>3 PLACES</td> <td>± .004</td> <td>± .0004</td> </tr> <tr> <td>2 PLACES</td> <td>± .003</td> <td>± .0003</td> </tr> <tr> <td>1 PLACE</td> <td>± .002</td> <td>± .0002</td> </tr> </table>		mm	INCH	4 PLACES	± .005	± .0005	3 PLACES	± .004	± .0004	2 PLACES	± .003	± .0003	1 PLACE	± .002	± .0002	SCALE 4:1	DESIGN UNITS INCH	THIRD ANGLE PROJECTION	REVISE ON CAD ONLY
			mm	INCH																	
	4 PLACES		± .005	± .0005																	
	3 PLACES		± .004	± .0004																	
2 PLACES	± .003	± .0003																			
1 PLACE	± .002	± .0002																			
DESCRIPTION	DIMENSION STYLE IN/MM	DRAWN BY BRUPERT	DATE 01/25/05	TITLE MALE PIN TERMINAL MX150L 12-10 & 8 AWG, .098/2.50 X .031/0.79																	
REVISIONS	DRAFT WHERE APPLICABLE	CHECKED BY JPWALICK	DATE 01/25/05	MOLEX INCORPORATED																	
	MUST REMAIN WITHIN DIMENSIONS	APPROVED BY RDEROSS	DATE 01/25/05	MATERIAL NO. SEE CHART	DOCUMENT NO. SD-19431-002	SHEET NO. 1 OF 1															

- NOTES:
1. MATERIAL: COPPER ALLOY.
 2. FINISH: PREPLATED AND REFLOWED OVERALL, 100µ TIN OVER 50µ NICKEL, MINIMUM.
 3. TERMINAL FOR USE WITH 19433-**** PLUG HOUSING ASSEMBLY.
 4. PRODUCT SPECIFICATION: PS-19431-001.
 5. PACKAGING SPECIFICATION: PK-19431-001.
 6. APPLICATION TOOLING AND CRIMP SPECIFICATIONS: CONSULT FACTORY.

td_frame_C-B1
rev. B1 2000/08/01