



Demonstration kit for single and double axis gyroscopes in a 4 x 5 mm package

Introduction

This document applies to all demonstration kits related to ST MEMS single and double axis gyroscopes in 4 x 5 mm packages, hereafter referred to as “STEVAL-MKI0xxV1”.

The STEVAL-MKI0xxV1 is a demonstration kit designed to provide the user with a complete, ready-to-use platform for demonstration of the LPR4xxAL and LPR4xxxAL product families.

The device includes a sensing element and an IC interface capable of translating information from the sensing element into a measured signal that can be used for external applications.

In addition to the MEMS sensor, the demonstration board utilizes an ST72651AR6 microcontroller which functions as a bridge between the sensor and the PC, on which it is possible to use the downloadable graphical user interface (GUI), or dedicated software routines for customized applications.

This user manual describes the hardware included with the demonstration kit and provides the information required to install and run the demonstration kit user interface.

For details regarding the features of each member of the LPR4xxAL and LPR4xxxAL sensor families, please refer to the datasheets available for each single device.

Contents

1	Demonstration kit description	5
2	Working modes	7
2.1	Analog working mode (AWM)	7
2.2	Digital working mode (DWM)	8
2.3	Additional settings	9
3	STEVAL-MKI0xxV1 GUI installation	10
3.1	PC system requirements	10
3.2	Software installation	10
3.3	Hardware installation	11
4	Graphical user interface	14
4.1	Connecting to the virtual COM port	15
4.2	GUI main window functions	15
4.2.1	“Easy Start” button	15
4.2.2	“Home” tab	16
4.2.3	“Options” tab	16
4.2.4	“Bars” tab	17
4.2.5	“Plot” tab	18
4.2.6	“Data” tab	20
4.2.7	“FFT” tab	21
5	Data acquisition quick start	22
6	STEVAL-MKI0xxV1 Lite	23
7	Supported commands	24
7.1	Getting started	24
7.2	Supported commands	24
7.2.1	Start command (DWM only)	25
7.2.2	Debug command (DWM only)	25
7.2.3	Stop command (DWM only)	26
7.2.4	Zon and Zoff	26

	7.2.5	Device name	26
	7.2.6	Firmware version	26
	7.3	Quick start	26
8	DFU	27	
	8.1	PC requirements	27
	8.2	DFU procedure	27
9	Schematic diagram	30	
10	Bill of materials	31	
11	Revision history	33	

List of tables

Table 1.	Jumper configurations for power down (PD), self-test (ST) and high pass filter reset (HP) in AWM	7
Table 2.	Jumper configurations for JP1 and JP6 in AWM	8
Table 3.	Jumper configurations for JP9 and JP8 in AWM	8
Table 4.	Jumper configuration for DWM	8
Table 5.	Supported commands	24
Table 6.	Bill of materials	31
Table 7.	Document revision history	33

List of figures

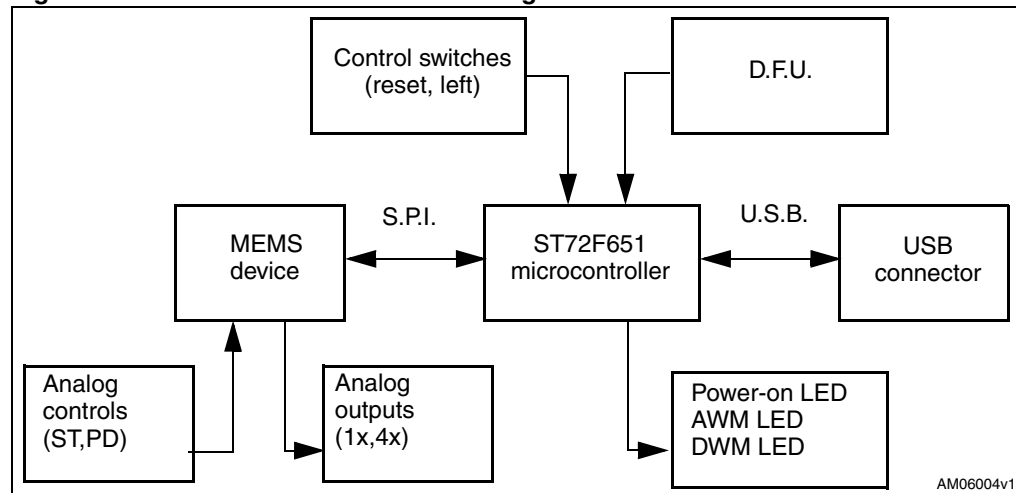
Figure 1.	Demonstration board block diagram	5
Figure 2.	Top silk screen of the STEVAL-MKI0xxV1 demonstration board	6
Figure 3.	Top view of the STEVAL-MKI0xxV1 demonstration board	6
Figure 4.	Software installation	10
Figure 5.	Notify icon	11
Figure 6.	Driver installation using the device manager	11
Figure 7.	USB driver installation using the hardware update wizard	12
Figure 8.	Virtual COM driver port assignment	13
Figure 9.	Graphical user interface: main window	14
Figure 10.	Home tab	16
Figure 11.	Options tab	16
Figure 12.	Bars tab - angular rate data	17
Figure 13.	Plot tab	18
Figure 14.	Plot tab - zoom	19
Figure 15.	Data tab	20
Figure 16.	FFT tab	21
Figure 17.	STEVAL-MKI0xxV1 Lite GUI	23
Figure 18.	Demonstration kit correctly recognized	27
Figure 19.	Select new firmware	28
Figure 20.	Flash erasing	29
Figure 21.	Flash upgrading	29
Figure 22.	Schematic diagram of the STEVAL-MKI0xxV1 board	30

1 Demonstration kit description

The STEVAL-MKI0xxV1 is a complete demonstration kit that allows evaluation of the performance of the LPR4xxAL and LPR4xxxAL low-power double/single-axis gyroscopes with analog outputs.

The block diagram of the demonstration board included in the kit is shown in [Figure 1](#).

Figure 1. Demonstration board block diagram



The analog outputs of the device are directly available through a dedicated connector. The ST72651AR6 microcontroller included on the board acquires and converts the analog outputs into digital signals, and provides the data to the user on the PC through the GUI provided with the kit.

The device firmware upgrade (DFU) is a feature allowing users to upgrade the firmware of the ST7 microcontroller whenever a new firmware release is available on www.st.com.

Switches and LED indicators are used to control and monitor the functionality of the board. The top silk screen view and photo of the full board, respectively, are shown in [Figure 2](#) and [Figure 3](#).

Figure 2. Top silk screen of the STEVAL-MKI0xxV1 demonstration board

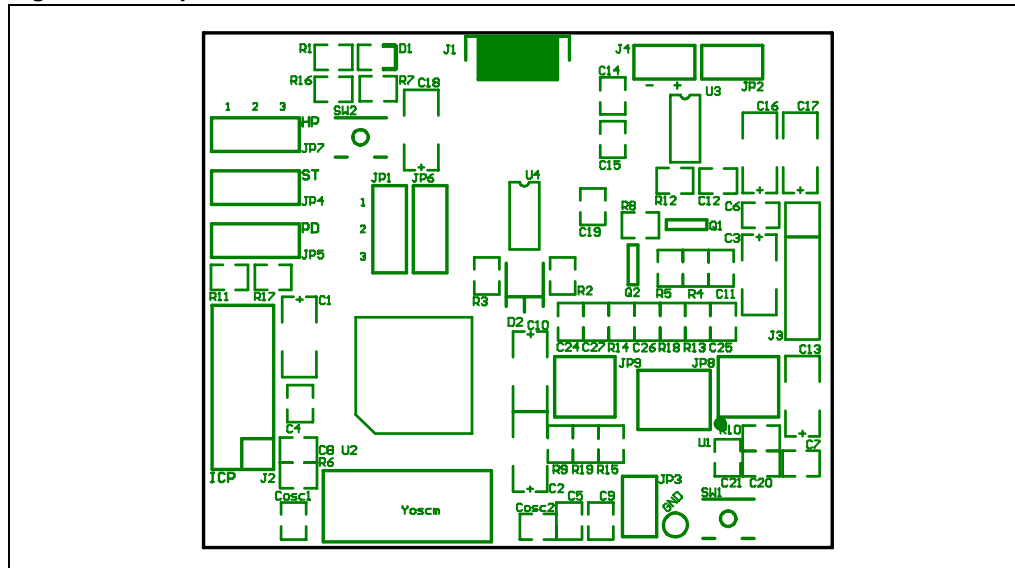
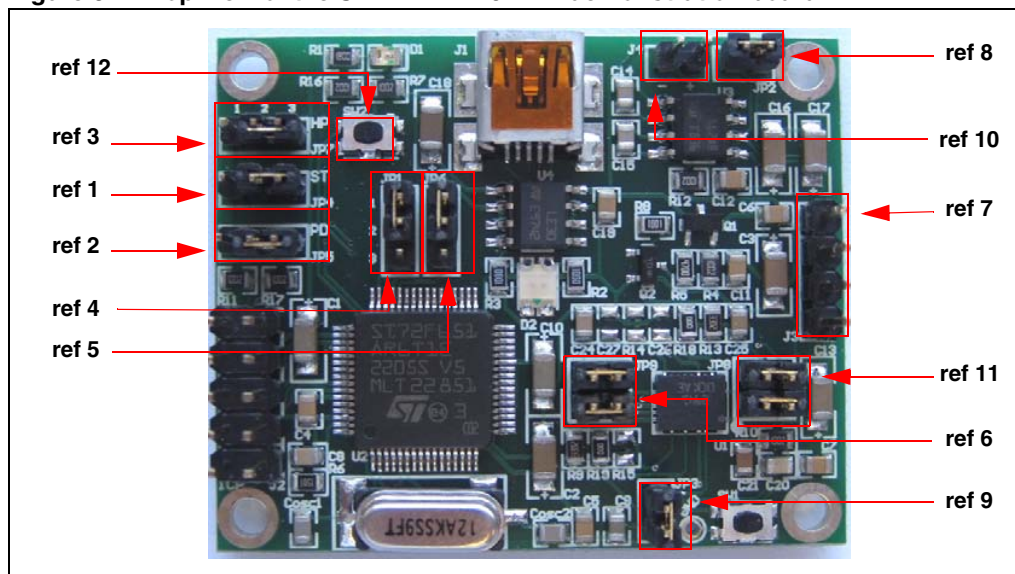


Figure 3. Top view of the STEVAL-MKI0xxV1 demonstration board



Operation of the STEVAL-MKI0xxV1 demonstration kit requires the installation of a dedicated driver which is included in the installation pack, together with a GUI interface which allows simple interaction with the sensor. The steps required for driver and software installation are described in the sections that follow.

2 Working modes

The STEVAL-MKI0xxV1 demonstration board is designed to be used in two different working modes:

- *Analog working mode (AWM)*: the microcontroller on the board is disabled and the analog outputs of the device are available to the user on the dedicated connector ([Figure 3](#), ref 7). This is the default working mode when power is applied either through the USB connector or through the supply connector ([Figure 3](#), ref 10).
- *Digital working mode (DWM)*: the microcontroller on the board is enabled and allows the user to digitally acquire the output signals of the device, to see them on the PC through the dedicated GUI and to manage the control pins of the device.

Each working mode requires a board setup, which is done by correctly setting the jumpers labeled JP4, JP5, JP7 (see ref 1, ref 2 and ref 3, respectively, in [Figure 3](#)) and the jumpers labeled JP1 and JP6 (see ref 4 and ref 5, respectively, in [Figure 3](#)).

2.1 Analog working mode (AWM)

AWM is the working mode activated by default when the board is connected to a PC by USB or when the power supply is applied to J10. The microcontroller on the board is disabled and board behavior can be controlled through the dedicated jumpers.

In this working mode, the power down (PD), self-test (ST) and high-pass filter reset (HP) functions are respectively managed by JP4, JP5 and JP7 as described below (see [Figure 3](#) to identify the jumpers):

Table 1. Jumper configurations for power down (PD), self-test (ST) and high pass filter reset (HP) in AWM

	Jumper on 1-2 position	Jumper on 2-3 position
JP4 ST	Logic level 1: self-test ON	Logic level 0: self-test OFF, default
JP5 PD	Logic level 1: power down mode	Logic level 0: normal mode, default
JP7 HP	Logic level 1: external high-pass filter reset	Logic level 0: normal mode, default

Analog output signals can be measured respectively through pin 3 (marked Out1), pin 4 (marked Out2, for single-axis devices only) and pin1 (GND) of the J3 header (see [Figure 3](#), ref 7).

The JP1 and JP6 jumpers allow the user to select which output signal is available on J3.

Table 2. Jumper configurations for JP1 and JP6 in AWM

	Jumper on 1-2 position	Jumper on 2-3 position
JP1¹	1xOut1 (not amplified): on J3-pin 3 (Out1)	4xOut1 (amplified): on J3-pin 3 (Out1)
JP6	1xOut2 (not amplified): on J3-pin 4 (Out2)	4xOut2 (amplified): on J3-pin 4 (Out2)

Note: Not connected for single axis devices

The JP9 and JP8 (for double axis devices only; see [Figure 3](#), ref 6 and ref 11) jumpers allow the management of external (HP and LP) filters, respectively, for Out2 and Out1.

Table 3. Jumper configurations for JP9 and JP8 in AWM

Configuration	Function
pin 1-2 short pin 3-4 short	HP and LP filters enabled
pin 2-4 open pin 3-4 short	HP and LP filters bypassed

Note: Not connected for single axis devices.

2.2 Digital working mode (DWM)

When the board is configured for DWM, it can be controlled by a PC through the dedicated GUI. The USB works as an interface channel between the PC and demonstration kit board by means of the microcontroller. The microcontroller takes advantage of its on-board 8-bit A/D converter to read analog values from the device and to convert them in digital values, then sends them to the PC via the USB channel.

For the board to work in DWM, the jumpers must be configured as described in [Table 4](#).

Table 4. Jumper configuration for DWM

Jumper	JUMPER position
JP4 ST	2-3 (default) or not connected
JP5 PD	2-3 (default) or not connected
JP7 HP	2-3 (default) or not connected
JP1 and JP6	Refer to Table 1
JP9 and JP8	Refer to Table 3

Users can interact with the board by means of the STEVAL-MKI0xxV1 GUI and/or Microsoft® Hyper Terminal (refer to [Section 4](#) and [Section 7](#)).

2.3 Additional settings

JP2 must be present on the board to enable the DFU feature ([Figure 3](#), ref 8). For detailed information on the DFU feature, see [Section 8](#).

JP3 allows the measurement of current consumption ([Figure 3](#), ref 9)

J4 (usually open) is used to supply the board, alternatively, through a USB connection ([Figure 3](#), ref 10).

3 STEVAL-MKI0xxV1 GUI installation

The installation of the graphical user interface (GUI) for the STEVAL-MKI0xxV1 requires two steps:

1. installation of the software downloaded from www.st.com
2. installation of the virtual COM driver needed to use the demonstration kit

3.1 PC system requirements

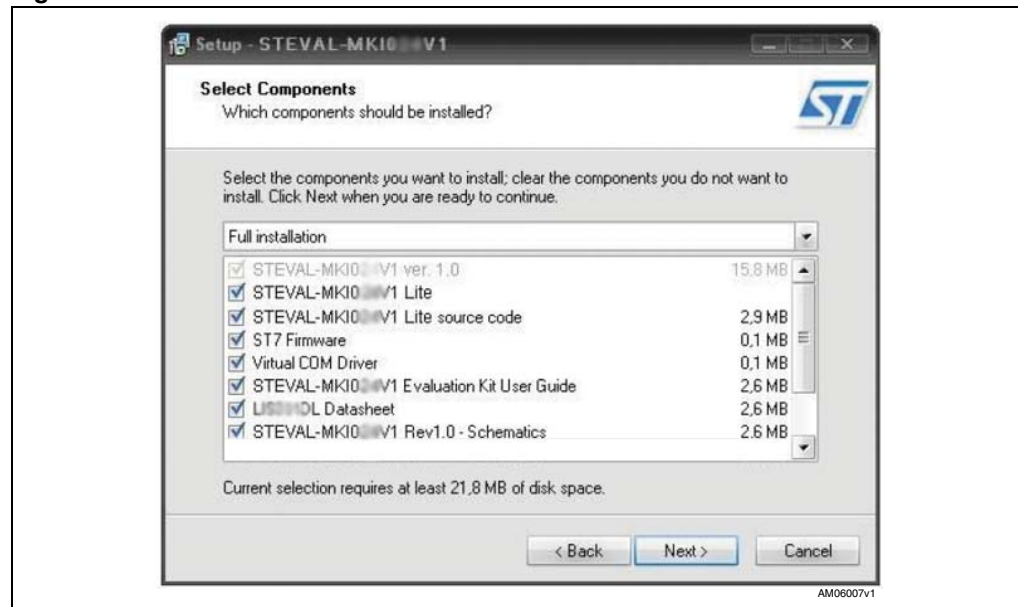
Both the hardware and software that compose the STEVAL-MKI0xxV1 demonstration kit have been designed to operate with Microsoft® Windows XP.

3.2 Software installation

To install the software:

1. double-click on "Setup.exe".
2. follow the on-screen instructions (*Figure 4*).

Figure 4. Software installation



3.3 Hardware installation

To install the virtual COM driver, insert the demonstration kit board into a free USB port. The “notify” icon should appear as in [Figure 5](#).

Figure 5. Notify icon



If the “hardware update wizard” window appears ([Figure 7](#)), follow the instructions on the screen, otherwise, the installation can be performed by following the instructions indicated in [Figure 6](#) and then [Figure 7](#).

Figure 6. Driver installation using the device manager

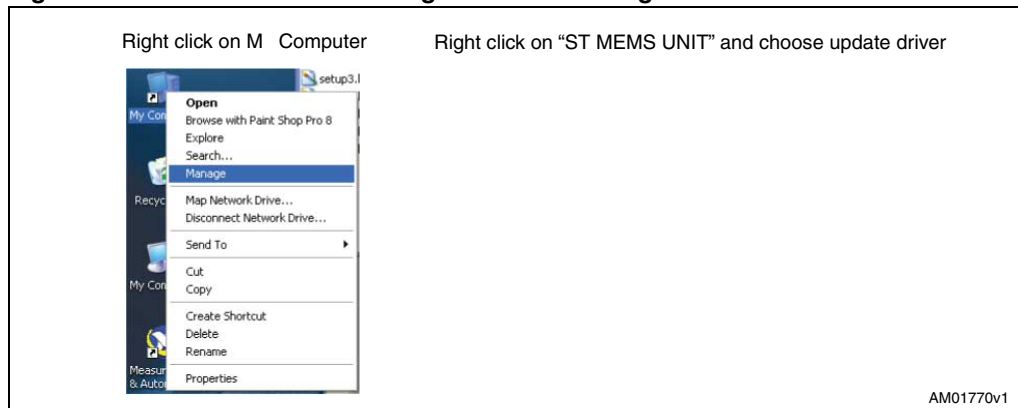
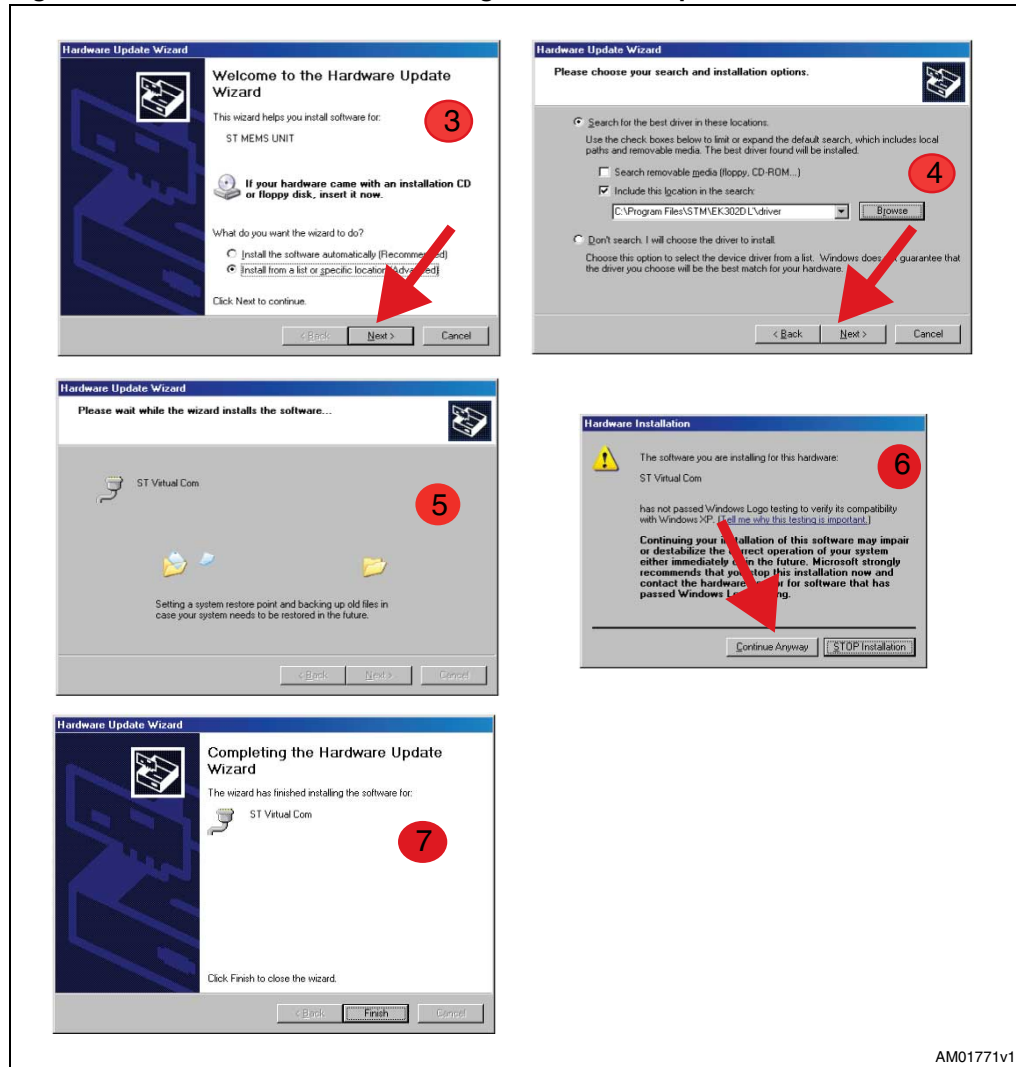
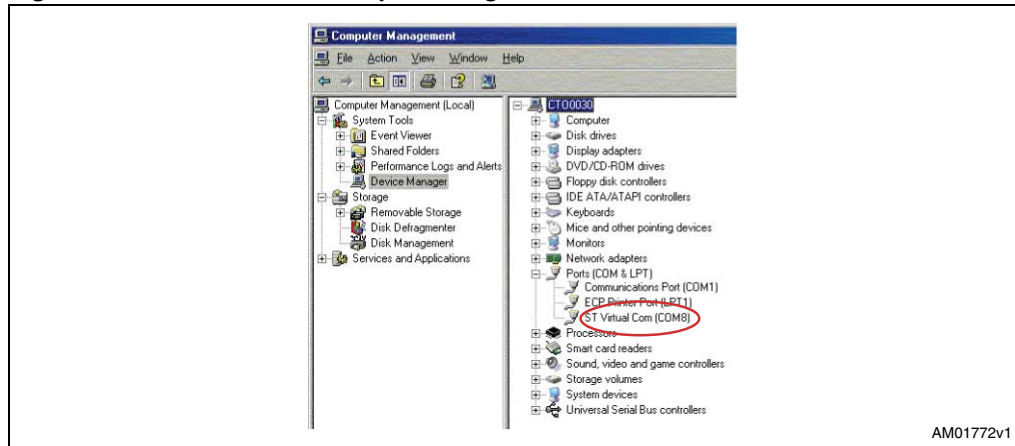


Figure 7. USB driver installation using the hardware update wizard



Once the installation is complete, a COM port number is assigned to the ST virtual COM driver ([Figure 8](#)). This number should be retained, as it is required to run the STEVAL-MKI0xxV1 demonstration software GUI. For additional details, see [Section 4.1](#).

Figure 8. Virtual COM driver port assignment



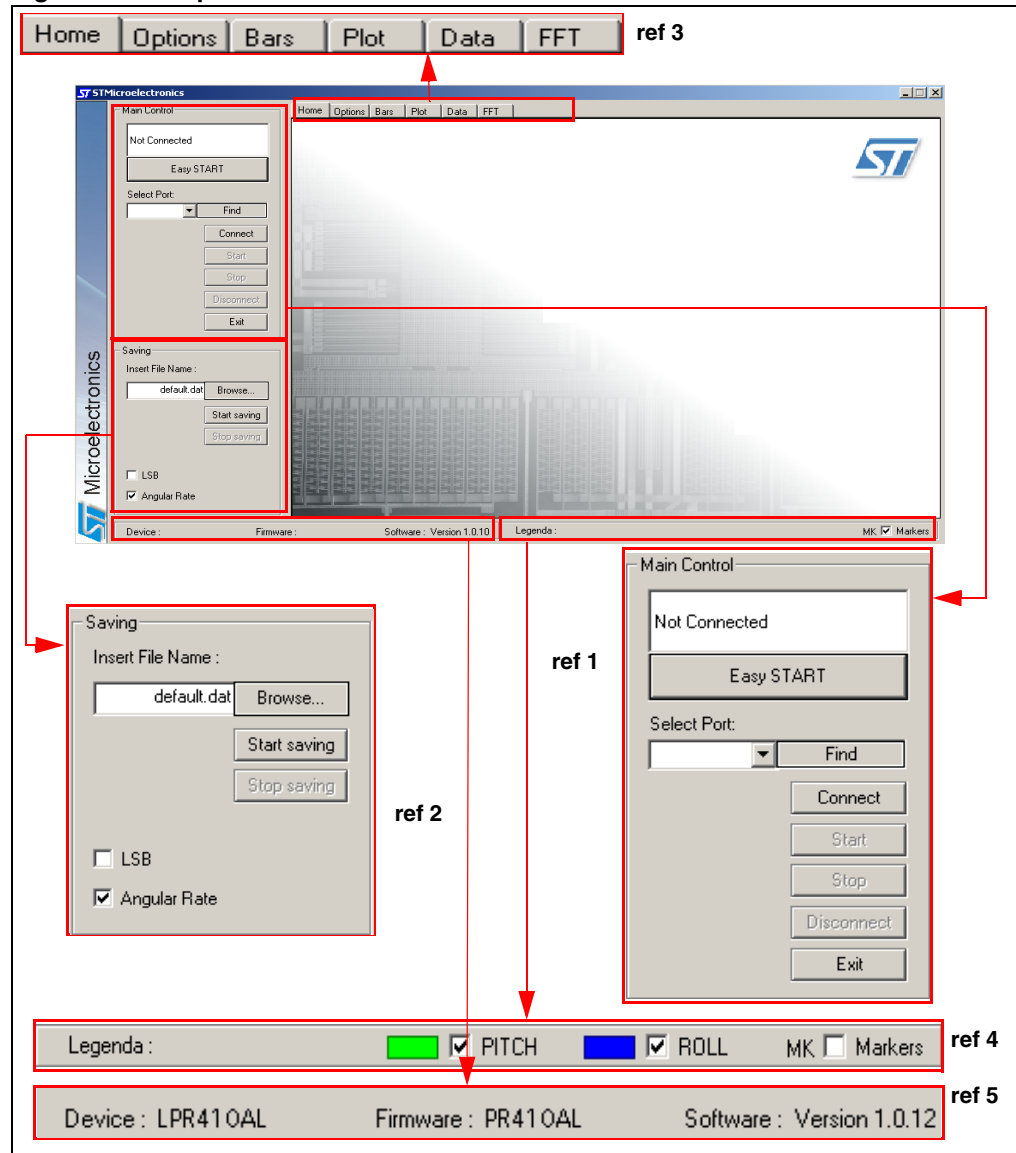
4 Graphical user interface

To run the STEVAL-MKI0xxV1 demonstration software GUI:

1. Click on Start > All Programs.
2. Select STEVAL-MKI0xxV1 > Executables.
3. Launch the program “STEVAL-MKI0xxV1 Ver.0.0.1”.

The GUI main window appears as shown in [Figure 9](#).

Figure 9. Graphical user interface: main window



The functions of the four main sections of the window are described below:

1. “Main control” ([Figure 9](#), ref 1) - connects/disconnects the board and starts acquisition via the Start/Stop buttons.
2. “Saving” box ([Figure 9](#), ref 2) - allows the user to save the data to a specified text file, choosing the data type to write. Data types available are:
 - a) LSB: the analog values measured by the 8-bit A/D converter of the microcontroller are converted to 8-bit values, hence the 256 magnitude levels.
 - b) Angular rate: LSB data are multiplied by the sensitivity to obtain the angular rate, expressed in deg/sec.
3. “Tab selector” ([Figure 9](#), ref 3) - used to toggle between the different features of the demonstration kit.
4. “Legend” ([Figure 9](#), ref 4) - used to enable/disable viewing the axes.
5. “Details” ([Figure 9](#), ref 5) - shows information about the demonstration kit, such as the name of the sensor, the version of the firmware loaded on the microcontroller and the version of the PC software.

4.1 Connecting to the virtual COM port

Before using the functions of the demonstration kit software, the connection with the STEVAL-MKI0xxV1 board must be opened using the following steps:

1. Connect the STEVAL-MKI0xxV1 to the desired USB port.
2. In the “Select COM” drop-down menu ([Figure 9](#) ref 1), choose the virtual COM number to which the board has been mapped. For additional information on how to obtain this number, see section [3.3](#). Otherwise, press “Find” to automatically get the correct COM number.
3. Open the connection by clicking on “Connect” ([Figure 9](#) ref 1). Opening the connection starts the board model recognition flow. If the flow terminates successfully, a recognized board code and mounted device code is generated and written on the “Home” tab. Otherwise, a message on the same tab alerts the user to check the board.

At this point, the user can acquire, plot and save the angular rate data measured by the sensor and access the content of the registers embedded in the device.

If the “Find” button is pressed ([Figure 9](#) ref 1), the GUI attempts to automatically find the COM number assigned to the demonstration kit, and displays it in the list box as a selected item.

4.2 GUI main window functions

The following sections provide details regarding the functions of the tabs and buttons on the GUI main window (see [Figure 9](#)).

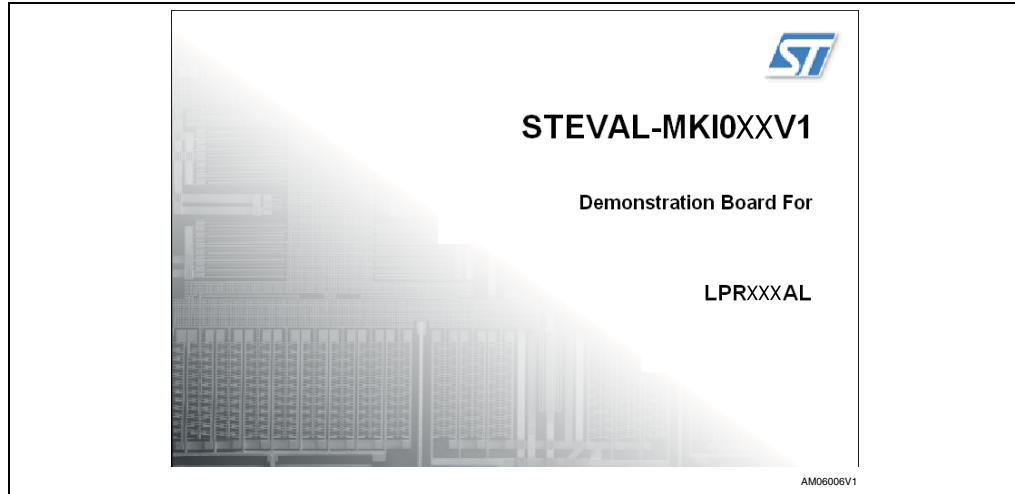
4.2.1 “Easy Start” button

When the “Easy Start” button is clicked ([Figure 9](#), ref 1), the GUI attempts to automatically find the COM number assigned to the demonstration kit, to recognize the connected board and its device and, if successful, starts the acquisition. If recognition is unsuccessful, a message alerts the user to verify that the board type is in the list of managed ones, or to update the SW.

4.2.2 “Home” tab

This tab is used to show the codes of managed and recognized devices and demonstration boards ([Figure 11](#)). In case of unmanaged devices, a message is shown on the tab.

Figure 10. Home tab

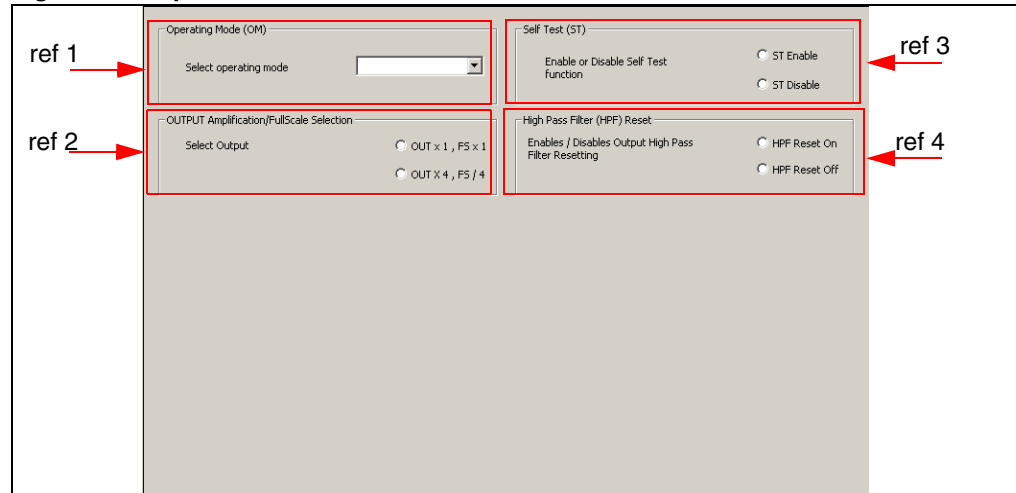


4.2.3 “Options” tab

The options tab allows the user to control the following parameters:

1. Operating mode (OM): allows the customer to select the operating mode: Normal Mode, Power Down Mode ([Figure 11](#), ref 1).
2. OUTPUT Amplification/FullScale Selection: allows the selection of the data to be acquired and plotted by the GUI between 1x amplification and 4X amplification ([Figure 11](#), ref 2).
3. Self Test (ST): enables the self-test function. ([Figure 11](#), ref 3).
4. High Pass Filter (HPF) Reset: allows user to reset the internal high-pass filter ([Figure 11](#), ref 4).

Figure 11. Options tab

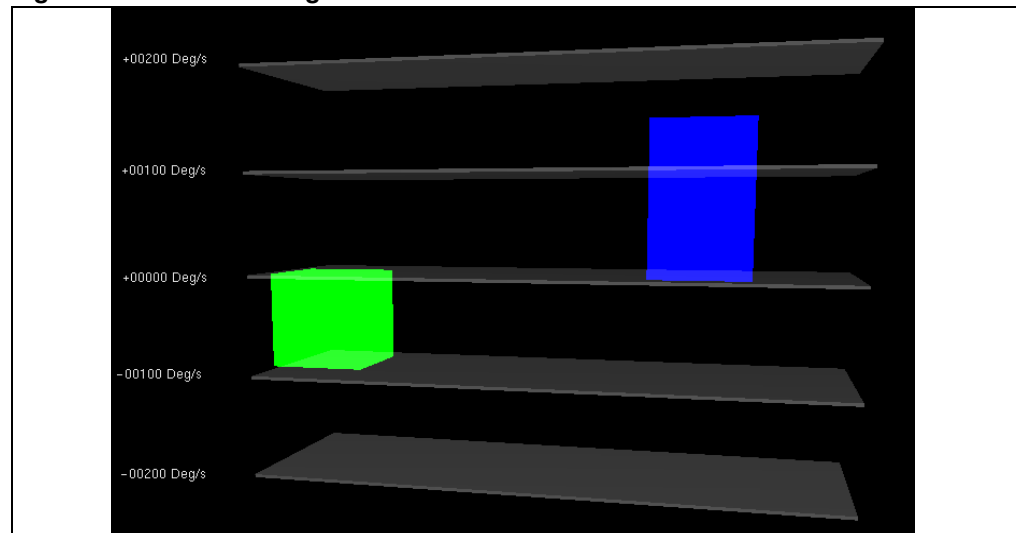


4.2.4 “Bars” tab

The bars tab ([Figure 12](#)) displays the available (pitch, roll and/or yaw) angular rate data measured by the device in a bar chart format (see [Figure 9](#), ref 4).

The height of the bar is determined by the amplitude of the signal measured around the axis. The full scale of the graph is fixed to 2 times the selected full scale of the selected device.

Figure 12. Bars tab - angular rate data



4.2.5 “Plot” tab

The plot tab (*Figure 13*) shows the sequence of selected angular rate samples that have been measured by the MEMS sensor and converted by the A/D converter.

The tab shows the “angular rate values” (*Figure 13*, ref 1) the numeric values of angular rates samples that have been measured by the sensor expressed as deg/sec.

Figure 13. Plot tab

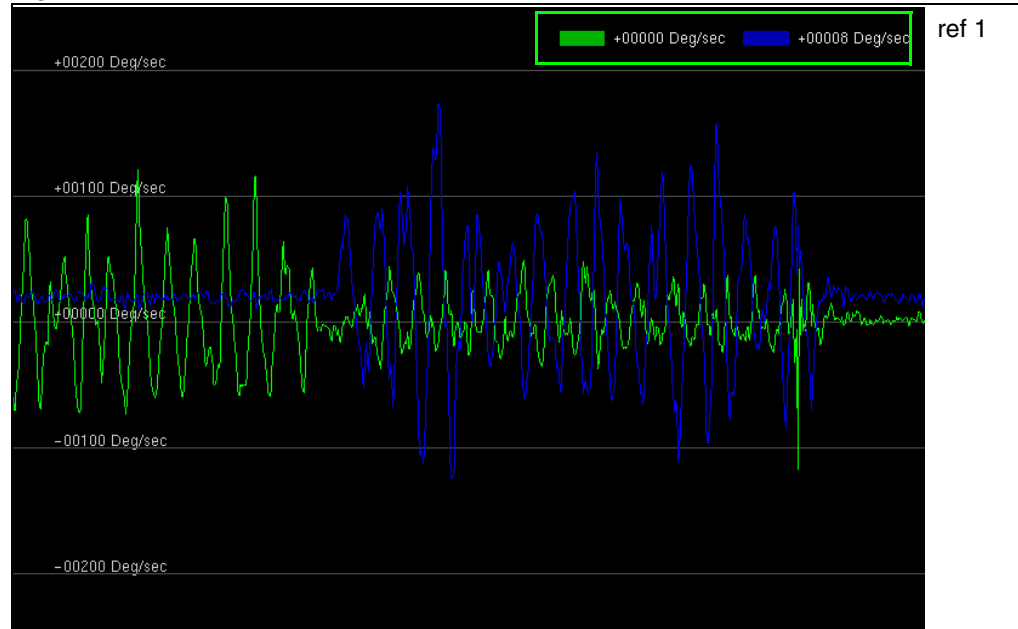
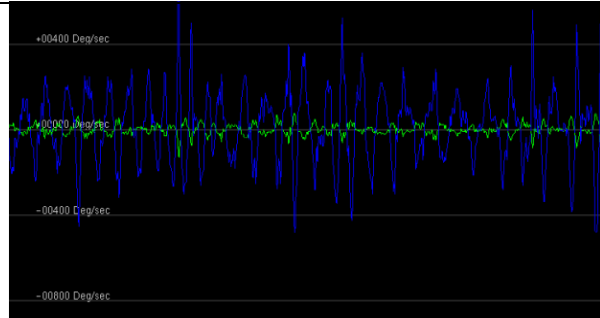
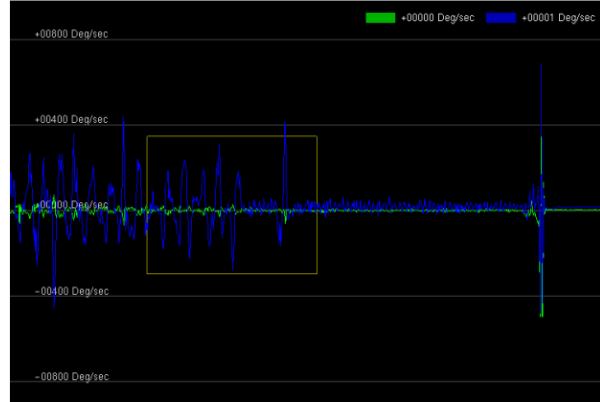


Figure 14. Plot tab - zoom

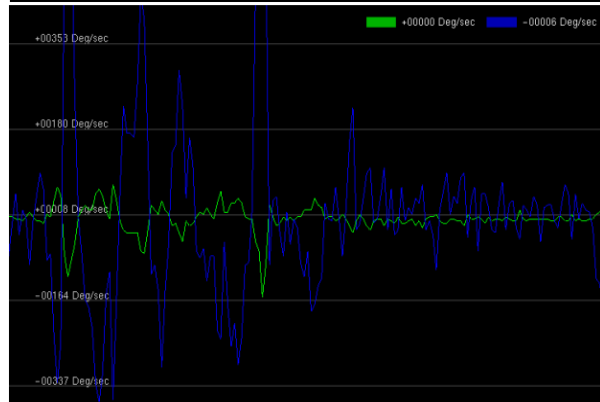
1) Select one point on the screen and click the LEFT mouse button.



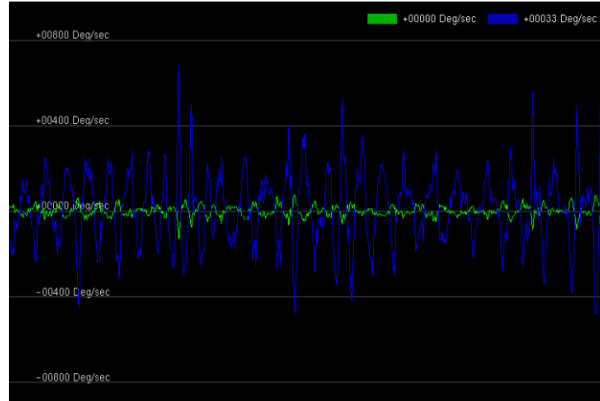
2) Holding the LEFT mouse button pressed, move the cursor to select an area on the screen.



3) Releasing the LEFT mouse button to terminate the zoom in process, a new magnified area is shown on the screen.



4) To return to the original view, click the RIGHT mouse button.



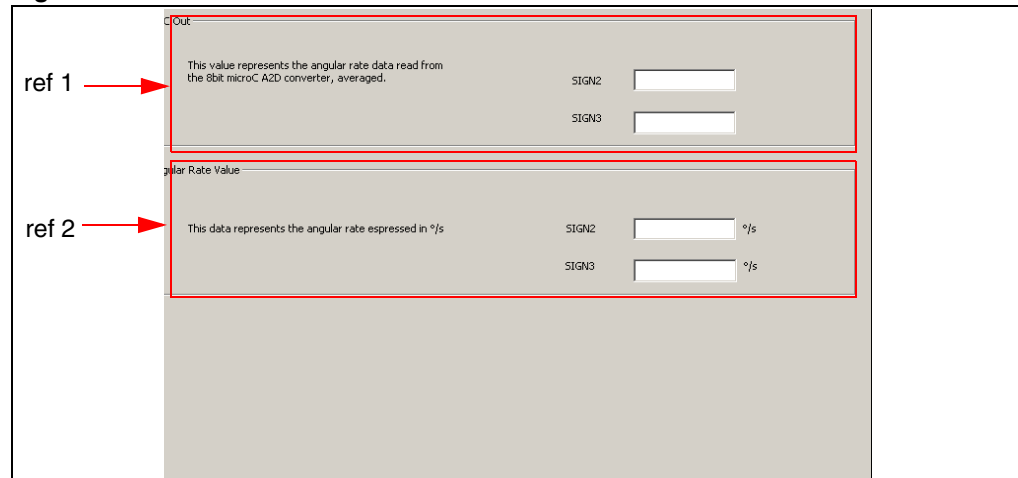
4.2.6 “Data” tab

The data tab (*Figure 15*) shows the angular rate values measured by the device. It is divided into two sections:

1. “ADC out” (*Figure 15*, ref 1) - displays the angular rate data provided by the sensor after its conversion to digital format by the 8-bit AD converter
2. “Angular rate value” (*Figure 15*, ref 2) - represents the angular rate data measured by the sensor, converted by the AD converter and multiplied by the currently-selected sensitivity. Values are expressed as deg/sec.

Note: To increase data readability, the values shown in the boxes described above are based on an average of 50 samples.

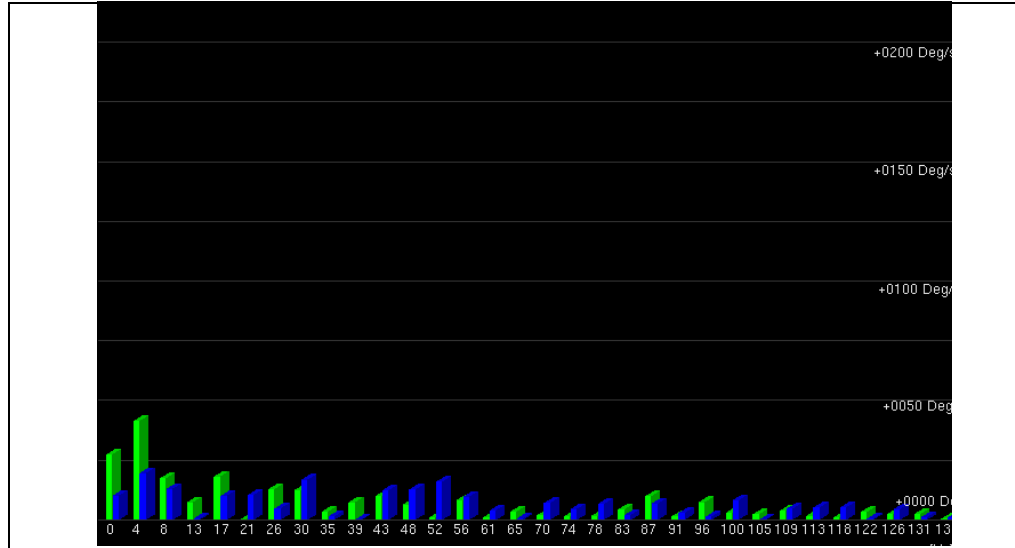
Figure 15. Data tab



4.2.7 “FFT” tab

The FFT tab (*Figure 16*) shows the FFT of the angular rate signals acquired by the sensor. The spectral data are updated for every sample arrival and are calculated on a 64-sample moving window.

Figure 16. FFT tab



5 Data acquisition quick start

This section describes the basic steps that must be performed to acquire the yaw data from the STEVAL-MKI0xxV1:

1. Connect the STEVAL-MKI0xxV1 to the USB port.
2. Start the STEVAL-MKI0xxV1 GUI.
3. Select the virtual COM port and click on the “Connect” button (*Figure 9*, ref 1).
4. Select the destination file to which the yaw data must be saved by clicking “Save” (*Figure 9*, ref 2) in the main control section (optional).
5. Use the tab menu to display the desired function.
6. Click on the “START” (or “STOP”) button to activate (or stop) the sensor data collection, saving to file, and screen plotting functions.
7. To close the application, click on “Disconnect” and then click on “Exit”.

6 STEVAL-MKI0xxV1 Lite

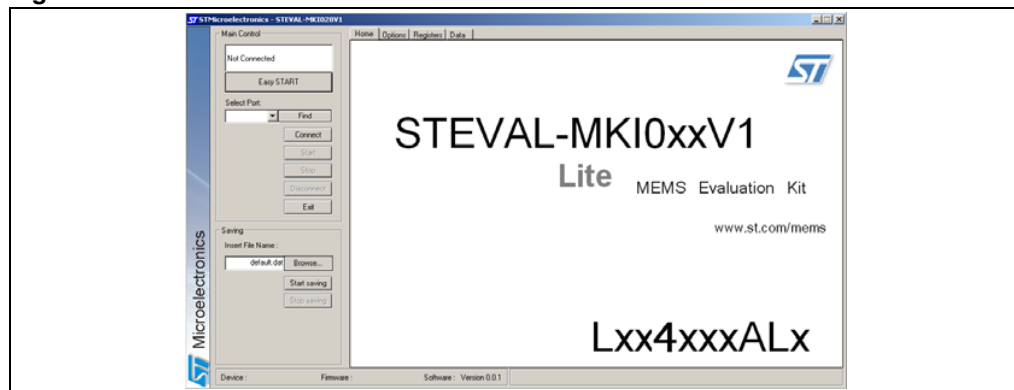
A lite version of the GUI together with its source code is also included in the installation pack. The source code can be found in the directory: (\$Home)\STM\STEVAL-MKI0xxV1\STEVAL-MKI0xxV1_lite, where (\$Home) is the directory in which the software that came with the demonstration kit was installed (C:\Program Files by default).

The purpose of the lite version is to provide the user with a foundation for the development of a customized application.

The lite version of the demonstration kit is started by launching the STEVAL-MKI0xxV1 Lite executable file located in the STEVAL-MKI0xxV1 > Executables folder.

An example of the GUI of the STEVAL-MKI0xxV1 Lite application is shown in [Figure 17](#).

Figure 17. STEVAL-MKI0xxV1 Lite GUI



Follow these instructions to use the software:

1. Connect the STEVAL-MKI0xxV1 to the USB port.
2. Launch the GUI for STEVAL-MKI0xxV1 Lite.
3. Select the virtual COM port and click on the “Connect” button.
4. Select the destination file to which the yaw rate data must be saved (optional).
5. Click on the “START” (or “STOP”) button to activate (or stop) the sensor data collection, saving to file, and screen plotting functions.
6. To close the application, click on “Disconnect” and then click on “Exit”.

7 Supported commands

The microcontroller mounted on the STEVAL-MKI0xxV1 board is equipped with dedicated firmware which supports a set of commands that allow control of the single axis digital output MEMS sensor and permit the acquisition of the measured angular rate data. The firmware also handles the communication between the STEVAL-MKI0xxV1 and the PC through the USB bus. These features allow users to easily write their own applications to exploit the capabilities of the gyroscope.

This section describes the commands that are supported by the firmware for the microcontroller of the STEVAL-MKI0xxV1 demonstration kit.

7.1 Getting started

Before using the commands supported by the firmware, the following procedure must be performed:

1. Connect the STEVAL-MKI0xxV1 to the USB port.
2. Launch an application that allows the sending of commands through the virtual serial port. The remainder of this document assumes the use of Microsoft's Hyper Terminal program, available with the Windows XP operating system.
3. Create a new connection, enter a name (ex. "STEVAL-MKI0xxV1"), and click "OK".
4. In the "Connect Using" field, select the virtual COM port to which the USB port has been mapped, and click "OK".
5. In port settings, set bits per second to 115200, data bits to 8, parity to none, stop bits to 1, and flow control to none. Click "OK".
6. In the "Hyper Terminal" application window choose "files" > "properties" > "settings", then click on the "ASCII Setup" button.
7. Select "Send line ends with line feeds" and "Echo typed characters locally".
8. Click the "OK" button to close the "ASCII Setup" window.
9. Click the "OK" button to close the "Properties" window.

Once this procedure has been completed the user can utilize the commands described in the following sections by typing them into the Hyper Terminal window.

7.2 Supported commands

The table below lists the commands supported by the STEVAL-MKI0xxV1 firmware.

Some commands are valid only for DCWM. Using them outside of DCWM could result in unexpected errors.

Table 5. Supported commands

Command	Description	Returned value	Available in WM
*start	Starts continuous data acquisition	s t R 4O2 O2 4O1 O1 oh S	DC
debug	Returns the angular rate data in readable text format	4[OUTX=XXXXXX] VREF=XXXXXX	DC

Table 5. Supported commands (continued)

Command	Description	Returned value	Available in WM
*stop	Stops data acquisition		DC
*Zon	Force 3-state (enter in AWM)		Both
*Zoff	Exit from 3-state (enter in DWM)		Both
*dev	Device name	e.g. LPR430AL	Both
*ver	Firmware version	e.g. PR430AL 1.08	Both

Where:

- R: Vref value
- 4O2: 4xOutput2
- O2: 1xOutput2
- 4O1: 4xOutput1
- O1: 1xOutput1
- 0h: byte set to 0 hex value
- s: service field

7.2.1 Start command (DWM only)

The *start command initiates the continuous data acquisition. When this command is sent to the board, it returns the angular rate data measured by the device. The angular rate data are packed in a string composed of 5 bytes (plus 2): "s t R 4O2 O2 4O1 O1 0h S". The first two bytes are always the ASCII char "s" and "t" which correspond to the hexadecimal values {73h 74h}, while "R", "4O2", "O2", "4O1" and "O1" respectively represent 8-bit AD converter digital output data for Vref, 4xOutput2, 1xOutput2, 4xOutput1, 1xOutput1.

0h: one byte at hexadecimal value 0.

The last byte, marked "S", returns information about the switches mounted on the board. Specifically, bit#0 of the "service data" correspond to the status of SW2 on the demonstration kit board. It is set to 1 when the SW2 switch is pressed (otherwise 0).

Before sending the *start command, the device must be out of 3-state and in DWM, hence *start must have been preceded by a *Zoff command.

Note: This is a digital working mode only command.

7.2.2 Debug command (DWM only)

The *debug command starts the continuous data acquisition in debug mode. When this command is sent to the board, it returns the Vref value and all 4 outputs measured by the device, digitized by the 8-bit AD converter and formatted to a readable text format. The values shown on the screen correspond to the content of the ADC output data and are shown as decimal numbers.

Note: This is a digital working mode only command.

7.2.3 Stop command (DWM only)

The *stop command interrupts any acquisition session that has been started with either the *start or *debug commands.

Note: This is a digital working mode only command.

7.2.4 Zon and Zoff

The *Zon and *Zoff commands are employed, respectively, to put into 3-state (i.e. high-impedance) and to remove from 3-state (i.e. normal mode) the lines of the ST72651AR6 microcontroller mounted on the demonstration kit. These commands allow the isolation of the sensor from the microprocessor and permit the user to interact with the sensor in a purely analog way.

By default, when the kit is turned on the lines are in 3-state mode (or AWM) and the user is required to send the command *Zoff to allow communication between the sensor and the microcontroller (or DWM).

7.2.5 Device name

The *dev command retrieves the name of the device mounted on the demonstration kit connected to the PC. The returned value is, e.g., "LPR430AL".

7.2.6 Firmware version

The *ver command queries the demonstration kit and returns the version of the firmware loaded in the microprocessor, e.g., "PR430AL 1.08"

7.3 Quick start

This section provides the basic sequence of commands to start a data communication session and to retrieve the yaw rate data from the demonstration kit, running in digital working mode:

1. Connect the STEVAL-MKI0xxV1 to the USB port.
2. Start Microsoft Hyper Terminal and configure it as described in [Section 7.1](#).
3. Inside the Hyper Terminal window, enter the command *Zoff to enable control of the device by the ST72651AR6 microcontroller.
4. Send the *debug command to get the yaw rate data measured by the sensor.
5. Send *stop to end the continuous acquisition and visualization.

8 DFU

The MEMS DFU (device firmware update) GUI is a graphical interface that allows the user to download and replace the firmware of a MEMS demonstration board, directly from a PC, through the USB port.

MEMS demonstration boards that mount an ST72651AR6 microcontroller can reprogram an application via USB, in accordance with the DFU class specification defined by the USB Implementers Forum (USB-IF). This capability is useful because it allows the reprogramming of the microcontroller directly in the field and is particularly well-suited for USB applications where the same USB connector can be used both for standard operating mode and for the reprogramming process.

Connector J4 must be shorted to allow the DFU procedure. If the demonstration kit is to be reprogrammed through the ICP (in-circuit programming) connector and the ST7 dedicated tools, J4 must be open.

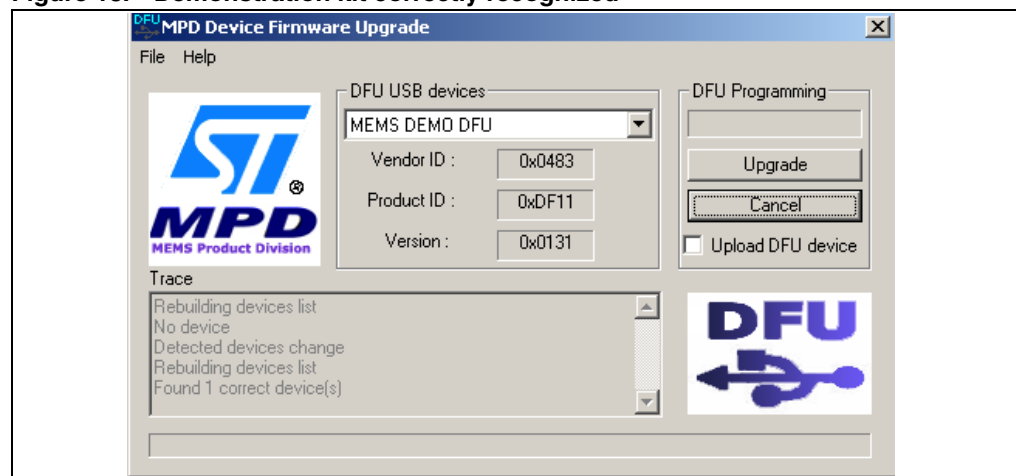
8.1 PC requirements

In order to use the device firmware upgrade (DFU) software with the Windows operating system, a recent version of Windows (such as Windows 98, Windows 98SE, Windows Millennium, Windows 2000 or Windows XP) must be installed on the PC.

8.2 DFU procedure

Run the DFU.exe file. To enter the firmware update mode the user must plug the USB cable into the demonstration kit while pressing the sw2 button on the board ([Figure 3](#), ref 12). [Figure 18](#) shows the window displayed when the board has been properly detected.

Figure 18. Demonstration kit correctly recognized



The DFU driver must be installed before using this feature. The driver can be found in “firmwareupdate.zip” in the driver installation folder of the demonstration kit.

After installation, “MEMS demonstration DFU” appears in the DFU USB devices list (*Figure 18*).

To execute the firmware upgrade:

1. Click on File > Open, select the directory where the “.dfu” file has been downloaded, and select it (*Figure 19*).
2. Click on “Upgrade”.
3. The internal Flash memory will be erased (*Figure 20*) and reflashed with the new firmware (*Figure 21*).

Once the procedure is complete, a Windows message appears, stating that a USB device is not recognized. The user can then unplug the USB cable from the STEVAL-MKI0xxV1 demonstration board and use it with the new firmware.

To back up the user’s current firmware before flashing the demonstration kit with a new one, flag “Upload DFU device” (*Figure 18*) before clicking on “Upgrade”. The user is then prompted to save the current firmware in the preferred directory before the erasing the internal Flash.

Figure 19. Select new firmware

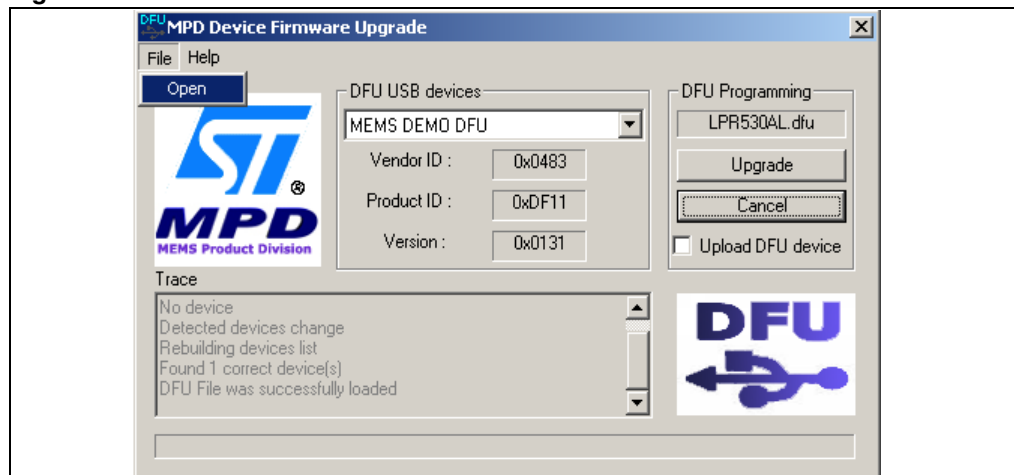


Figure 20. Flash erasing

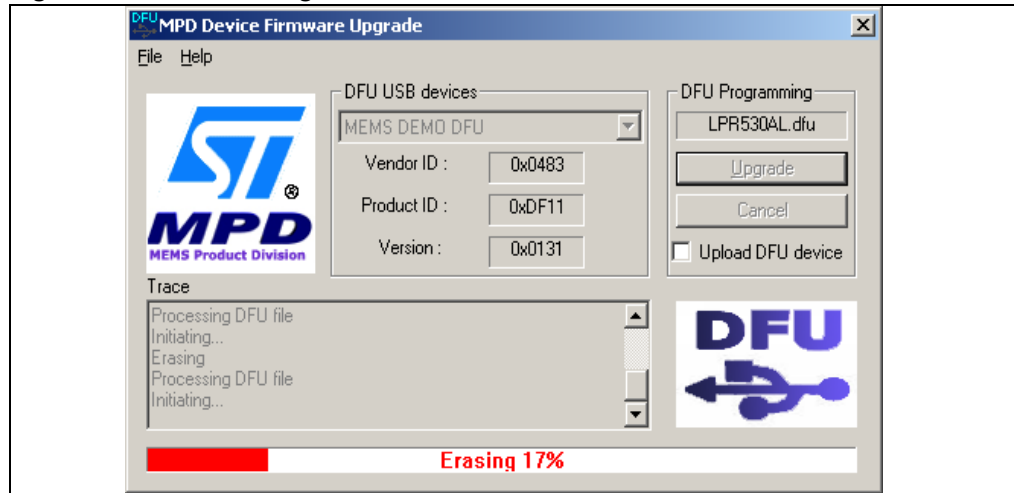
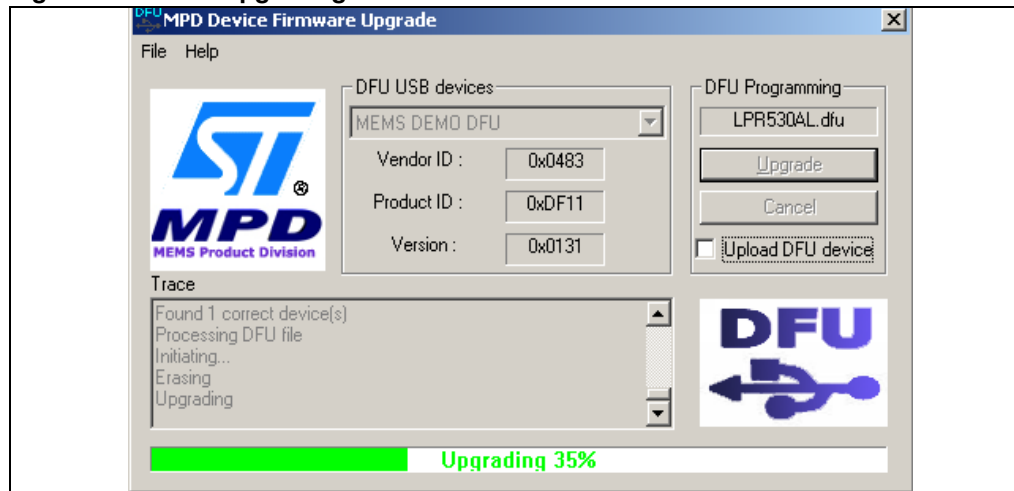


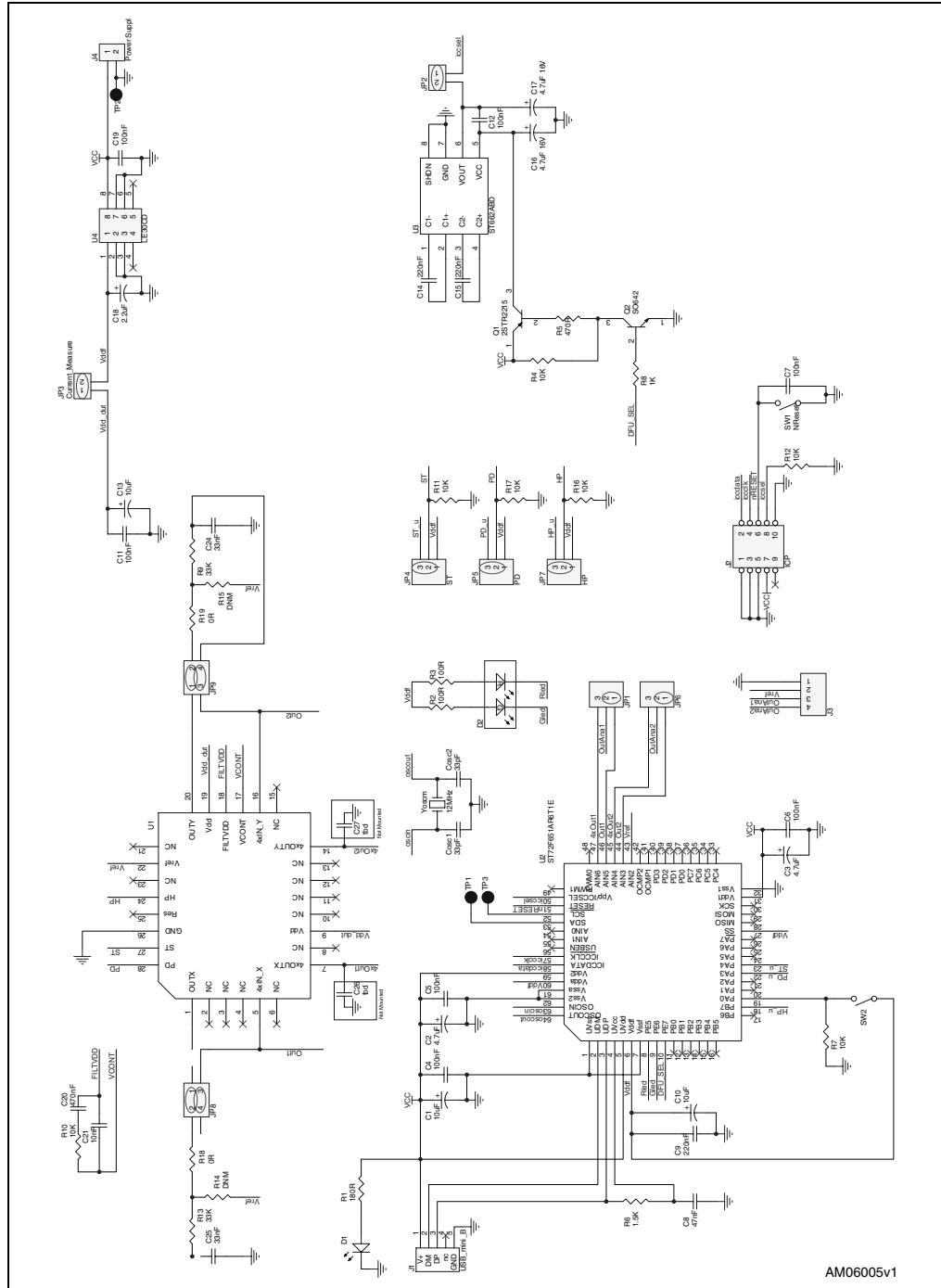
Figure 21. Flash upgrading



9 Schematic diagram

The schematic diagram of the STEVAL-MK10xxV1 demonstration kit is shown in [Figure 22](#).

Figure 22. Schematic diagram of the STEVAL-MK10xxV1 board



10 Bill of materials

The bill of materials for the STEVAL-MKI0xxV1 demonstration kit is provided in the table below.

Table 6. Bill of materials

Designator	Description	Comment	Footprint
C1	Capacitor	10 μ F	C1206_POL
C2		4 μ F	C1206_POL
C3		4 μ F	C1206_POL
C4		100 nF	0805
C5		100 nF	0805
C6		100 nF	0805
C7		100 nF	0805
C8		47 nF	0805
C9		220 nF	0805
C10		10 μ F	C1206_POL
C11		100 nF	0805
C12		100 nF	0805
C13		10 μ F	C1206_POL
C14		220 nF	0805
C15		220 nF	0805
C16		4 μ F, 16 V	C1206_POL
C17		4 μ F, 16 V	C1206_POL
C18		2 μ 2	C1206_POL
C19		100 nF	0805
C20		470 nF	0805
C21		10 nF	0805
C22		4 μ F	0805
C23		4 μ F	0805
C24		2n2	0805
C25		2n2	0805
Cosc1		33 pF	0805
Cosc2		33 pF	0805
D1	LED	SMD_LED green	LED_SMD_0805
D2		SMD_LED 3C	LED_SMD_3C
J1	USB connector	USB_mini_B	USB_mini_B
J3	Header 8	Header 1x4	Header 1x4 2mm

Table 6. Bill of materials (continued)

Designator	Description	Comment	Footprint
J4	Connector	Header 1x2	Header 1x2 2mm
JP1		Header 1x2	Header 1x2 2mm
JP2		Header 1x2	Header 1x2 2mm
JP3		Header 1x2	Header 1x2 2mm
JP4		Header 1x3	Header 1x3 2mm
JP5		Header 1x3	Header 1x3 2mm
JP6		Header 1x3	Header 1x3 2mm
JP7		Header 1x3	Header 1x3 2mm
JP8	Header 2x2	Header 2x2	Header 2x2 2mm
JP9		Header 2x2	Header 2x2 2mm
Q1	Transistor	2STR2215	SOT-23-3
Q2		SO624	SOT-23-3
R1	Resistor	180 Ω	0805
R2		100 Ω	0805
R3		100 Ω	0805
R4		10 k Ω	0805
R5		470 Ω	0805
R6		1 k Ω	0805
R7		10 k Ω	0805
R8		1 k Ω	0805
R9		33 k Ω	0805
R10		10 k Ω	0805
R11		10 k Ω	0805
R12		10 k Ω	0805
R13		33 k Ω	0805
R14		1 MW	0805
R15		1 MW	0805
R16		10 k Ω	0805
R17		10 k Ω	0805
SW1	Button	NReset	SMT_Button
SW2		SMT_Button	SMT_Button
U1	IC	Single or dual axis gyro in 4x5mm package	LGA-16_4_5_1.1
U2		ST72F651AR6T1E	TQFP64_10x10
U3		ST662ABD	SO-G8
U4		LE30CD	SO-G8
Yoscm1	Crystal	12 MHz	SXA

11 Revision history

Table 7. Document revision history

Date	Revision	Changes
11-Nov-2009	1	Initial release.

Please Read Carefully:

Information in this document is provided solely in connection with ST products. STMicroelectronics NV and its subsidiaries ("ST") reserve the right to make changes, corrections, modifications or improvements, to this document, and the products and services described herein at any time, without notice.

All ST products are sold pursuant to ST's terms and conditions of sale.

Purchasers are solely responsible for the choice, selection and use of the ST products and services described herein, and ST assumes no liability whatsoever relating to the choice, selection or use of the ST products and services described herein.

No license, express or implied, by estoppel or otherwise, to any intellectual property rights is granted under this document. If any part of this document refers to any third party products or services it shall not be deemed a license grant by ST for the use of such third party products or services, or any intellectual property contained therein or considered as a warranty covering the use in any manner whatsoever of such third party products or services or any intellectual property contained therein.

UNLESS OTHERWISE SET FORTH IN ST'S TERMS AND CONDITIONS OF SALE ST DISCLAIMS ANY EXPRESS OR IMPLIED WARRANTY WITH RESPECT TO THE USE AND/OR SALE OF ST PRODUCTS INCLUDING WITHOUT LIMITATION IMPLIED WARRANTIES OF MERCHANTABILITY, FITNESS FOR A PARTICULAR PURPOSE (AND THEIR EQUIVALENTS UNDER THE LAWS OF ANY JURISDICTION), OR INFRINGEMENT OF ANY PATENT, COPYRIGHT OR OTHER INTELLECTUAL PROPERTY RIGHT.

UNLESS EXPRESSLY APPROVED IN WRITING BY AN AUTHORIZED ST REPRESENTATIVE, ST PRODUCTS ARE NOT RECOMMENDED, AUTHORIZED OR WARRANTED FOR USE IN MILITARY, AIR CRAFT, SPACE, LIFE SAVING, OR LIFE SUSTAINING APPLICATIONS, NOR IN PRODUCTS OR SYSTEMS WHERE FAILURE OR MALFUNCTION MAY RESULT IN PERSONAL INJURY, DEATH, OR SEVERE PROPERTY OR ENVIRONMENTAL DAMAGE. ST PRODUCTS WHICH ARE NOT SPECIFIED AS "AUTOMOTIVE GRADE" MAY ONLY BE USED IN AUTOMOTIVE APPLICATIONS AT USER'S OWN RISK.

Resale of ST products with provisions different from the statements and/or technical features set forth in this document shall immediately void any warranty granted by ST for the ST product or service described herein and shall not create or extend in any manner whatsoever, any liability of ST.

ST and the ST logo are trademarks or registered trademarks of ST in various countries.

Information in this document supersedes and replaces all information previously supplied.

The ST logo is a registered trademark of STMicroelectronics. All other names are the property of their respective owners.

© 2009 STMicroelectronics - All rights reserved

STMicroelectronics group of companies

Australia - Belgium - Brazil - Canada - China - Czech Republic - Finland - France - Germany - Hong Kong - India - Israel - Italy - Japan - Malaysia - Malta - Morocco - Philippines - Singapore - Spain - Sweden - Switzerland - United Kingdom - United States of America

www.st.com

