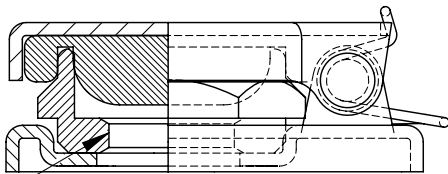


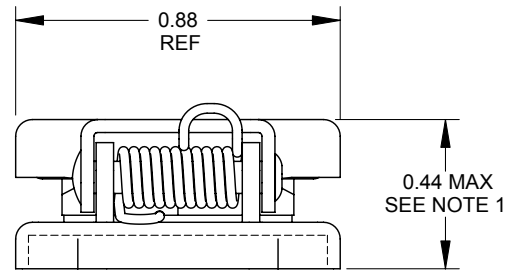
NOTES:

1. DIMENSIONS WITH PART OPEN AS SHOWN.
2. MATERIALS:
 BASE AND COVER - STEEL, BRIGHT NICKEL PLATED
 GASKET - NEOPRENE
 NUT - BRASS, NICKEL PLATED
 TORSION SPRING - STAINLESS STEEL
 AXLE - BRASS, NICKEL PLATED
3. THIS PRODUCT IS RoHS COMPLIANT.



3/8-32 UNF-2B
THREAD

Ø0.386
REF



CUSTOMER DRAWING

					THIS DRAWING DESCRIBES A DESIGN CONSIDERED PROPRIETARY IN NATURE, DEVELOPED AND MANUFACTURED BY SWITCHCRAFT INC. AND IS RELEASED ON A CONFIDENTIAL BASIS FOR IDENTIFICATION PURPOSES ONLY.				
UNLESS OTHERWISE SPECIFIED					SIZE	WIDTH	MULT	LBS/M	TEMPER
1. ALL DIMENSIONS IN INCHES					FINISH			MATERIAL	
- TWO PLACE DECIMALS ±0.02					SPEC No.			SPEC No.	
- THREE PLACE DECIMALS ±0.005					FIRST USED ON		SCALE 2.5:1		
E	23793	9-19-07	RF	TJK	DATE DRAWN	BY	CHKD	APVD	Switchcraft®
D	22434	11-9-98	RC	JF	4-21-64	IRT	CJW	LG	
REV	ECO NUMBER	DATE	BY	APVD	NAME			PART No.	
REVISIONS					DO NOT SCALE DRAWING			SHEET 1 OF 1	
SolidWorks CAD File					JAX COVER, RoHS			512	
								REV E	

SolidWorks CAD File

