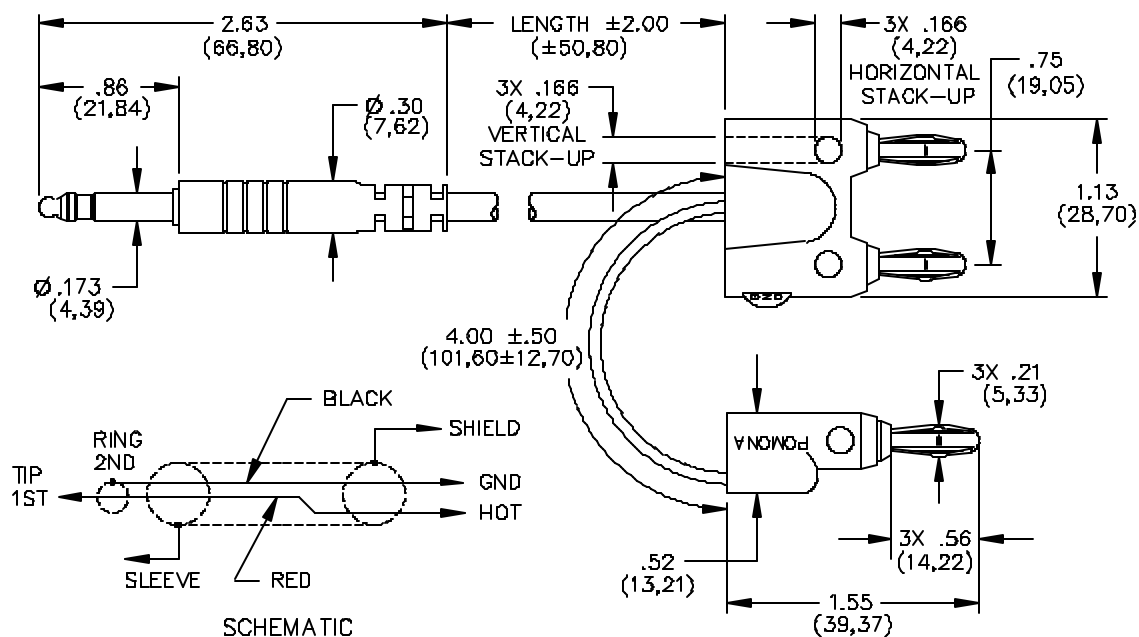


Model 4281 Miniature Phone Plug To Double Plug Balanced Line



FEATURES:

- Converts Bantam (Miniature Phone Plug) Female to Triple Banana Plug Output
- Banana Plug provided for shielding or grounding.
- Lengths other than those specified are available upon request.

MATERIALS:

Conn: 1st end – Bantam Phone Plug

Cable: 2 conductor stranded copper, 26 AWG.

PVC jacket. (.180) O.D. Color: Gray.

Marking: "POMONA 4281-XX".

Shield Lead: 20 AWG, stranding 41x36 tinned copper, PVC. 2.21 (.087) Dia. Color: Green.

Conn: 2nd end – Double and Single Banana Plug

Material: Spring – Beryllium Copper per QQ-C-533, Berylco 25 Cond. HT.

Plug Body – Brass per QQ-B-626, Alloy 360, 1/2 Hard.

Finish: Nickel plated per QQ-N-290, Class 2,

200/300 microinches.

Insulation: Double Banana Plug – Polypropylene molded to plug bodies and cable. Color: Gray.

Marking: "POMONA ELECTRONICS POMONA CALIFORNIA".

Single Banana Plug – Polypropylene molded to plug body and wire. Color: Green.

Marking: "POMONA ELECTRONICS POMONA CALIFORNIA".

RATINGS:

Operating Temperature.: +55° C. (+131° F.) Max.

Operating Voltage: 500 V Peak.

ORDERING INFORMATION: Model 4281-XX
XX=Wire Length, Standard Lengths: 36" (914),
48" (1219), 60" (1524)
Ordering Example: 4281-36 Cable Length is 36" (914)

All dimensions are in inches. Tolerances (except noted): .xx = ±.02" (.51 mm), .xxx = ± .005" (.127 mm).

All specifications are to the latest revisions. Specifications are subject to change without notice.

Registered trademarks are the property of their respective companies. Made in USA

6/9/99

SY/EH/LS

S:\Engineering\Release\DataSheets\FI\LukeDataSheet\4281_1_01.doc

Sales: 800-490-2361 Fax: 888-403-3360

Technical Assistance: 800-241-2060

PomonaACCESS 90594 (800) 444-6785 or (425) 446-6010
More drawings available at www.pomonaelectronics.com

Page 1 of 1