

10113947 - X 0 C - X 0 X L F

6-COLUMN DIFFERENTIAL SIGNAL

LEAD-FREE DESIGNATION ONLY WITH APPLICABLE PLATING CODES

LETTER	PLATING (SEE NOTE 2)	
	APPLICATION	TYPE (REFERENCE)
B	TELCORDIA CO	0.76um GOLD or GXT
C	TELCORDIA UE	1.27um GOLD
D	TELCORDIA CO	0.76um GOLD or GXT, LEAD-FREE
E	TELCORDIA UE	1.27um GOLD, LEAD-FREE

MODULE DESCRIPTION	LETTER DESIGNATION REPRESENTED IN DASH NUMBER										BASE MODULE
	J	A	B	C	D	E	F	G	H		
LEFT POLARIZING GUIDANCE MODULE (SEE SHEET 3)											
RIGHT POLARIZING GUIDANCE MODULE (SEE SHEET 4)											
OPEN MODULE (TWO WALL) (SEE SHEET 2)	0 (ZERO)										
LEFT WALL MODULE (SEE SHEET 5)	L										
RIGHT WALL MODULE (SEE SHEET 6)	M										
FOUR WALL MODULE (SEE SHEET 7)	1										

NUMBER	CONTACT MATING WIPE LENGTH		COMPLIANT PIN DRILL SIZE
	SIGNAL	WIDE GROUND	
1	2	4	Ø 0.55 [0.0217"]
2	3	4	Ø 0.55 [0.0217"]
3	2	4	Ø 0.45 [0.0177"]
4	3	4	Ø 0.45 [0.0177"]
5	2	3	Ø 0.55 [0.0217"]
6	3	3	Ø 0.55 [0.0217"]
7	2	3	Ø 0.45 [0.0177"]
8	3	3	Ø 0.45 [0.0177"]

TABLE 1: OPTIONAL PCB HOLE SIZE (SEE NOTE 11)

	GROUNDED	UNGROUNDED
FINISHED	Ø 2.35-2.55	Ø 2.35-2.55
PAD	Ø 5.50	N/A
PLATED	YES	NO
DRILL (mm/in)	2.58 / .1015	2.44 / .096

TABLE 2: OPTIONAL SCREW TYPE (SEE NOTE 10)

SCREW P/N	DESCRIPTION	BOARD THICKNESS
10104997-002LF	#2-56 X .375" PHILLIPS PANHEAD W/SO CONICAL WASHER	1.60 - 5.00
10104997-003LF	#2-56 X .500" PHILLIPS PANHEAD W/SO CONICAL WASHER	5.00 - 10.00

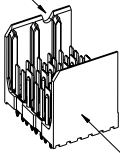
spec ref	SEE NOTES	dr	KH LEE	2010-06-15	projection	MM	size	A2	scale	2:1
tolerance std	ASME Y14.5	eng	NG. R	2011-05-16	chr	NG. R	2011-05-16	ecn no		
ASME Y14.5	TOLERANCES UNLESS OTHERWISE SPECIFIED	appr	C.H. TAN	2011-05-16	product family		XCode	rel level	Released	
surface	linear	0.1	±0.2	0.25	±0.10	0.25	±0.050	part no	10113947	rev
ASME Y14.5	angular	0°	±°					Product	Customer Drw	sheet 1 of 6

PDS: Rev :A STATUS: Released Printed: May 20, 2011

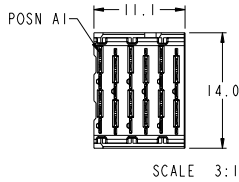
Copyright FCJ

OPEN (2-WALL) MODULE

SEE NOTE 8



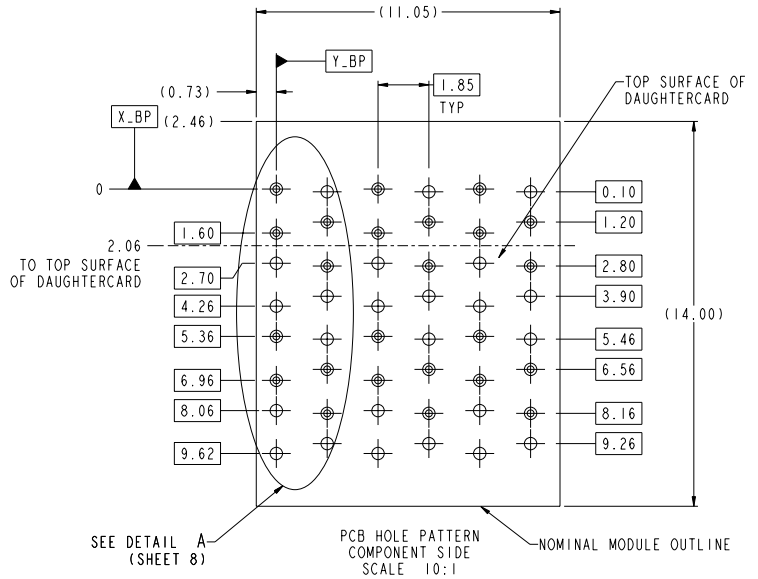
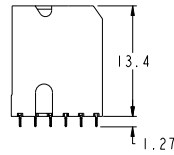
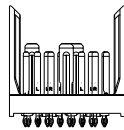
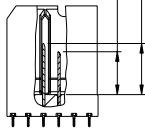
SEE NOTE 5



6.2 (4MM WIPE WIDE GROUNDS)  
5.2 (3MM WIPE WIDE GROUNDS)

5.2 (3MM SMALL END GROUNDS)  
5.2 (3MM WIPE SIGNALS)  
4.2 (2MM WIPE SIGNALS)

(SEE P/N TREE FOR ALL COMBINATIONS AVAILABLE)



SEE DETAIL A (SHEET 8)

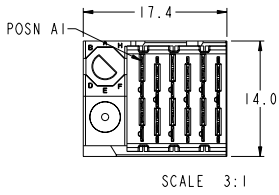
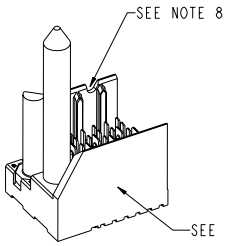
PCB HOLE PATTERN COMPONENT SIDE SCALE 10:1

NOMINAL MODULE OUTLINE SCALE 10:1

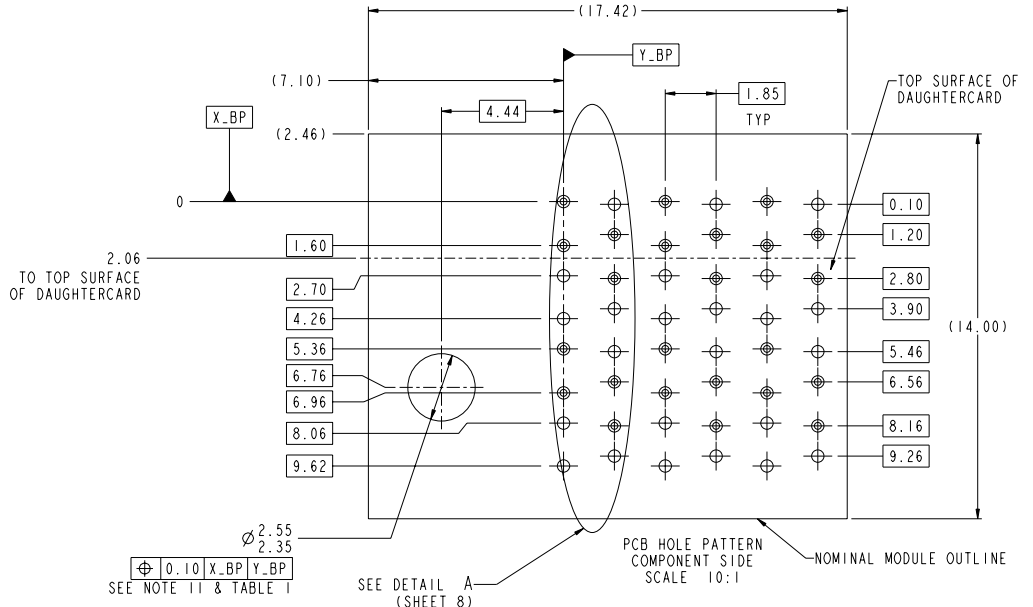
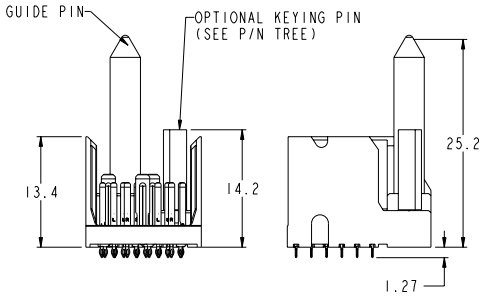
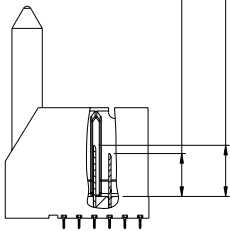
Copyright FCJ

spec ref	SEE NOTES	dr	KH LEE	2010-06-15	projection	MM	size	A2	scale	2:1
tolerance std	TOLERANCES UNLESS OTHERWISE SPECIFIED	eng	NG. R	2011-05-16	chr	NG. R	2011-05-16	ecn no		Released
ASME Y14.5		appr	C.H. TAN	2011-05-16	product family		XCode	rel level		
surface	linear	0.1	±0.2							
		0.2X	±0.10							
ASME Y14.5	angular	0.2XX	±0.050							
		0°	±°							
		www.fcj.com		cat. no.		SEE P/N TREE		Product		Customer Draw
		PDS: Rev: A		STATUS: Released		Printed: May 20, 2011				

LEFT POLARIZING/GUIDE MODULE



- 6.2 (4MM WIPE WIDE GROUNDS)
  - 5.2 (3MM WIPE WIDE GROUNDS)
  - 5.2 (3MM SMALL END GROUNDS)
  - 5.2 (3MM WIPE SIGNALS)
  - 4.2 (2MM WIPE SIGNALS)
- (SEE P/N TREE FOR ALL COMBINATIONS AVAILABLE)

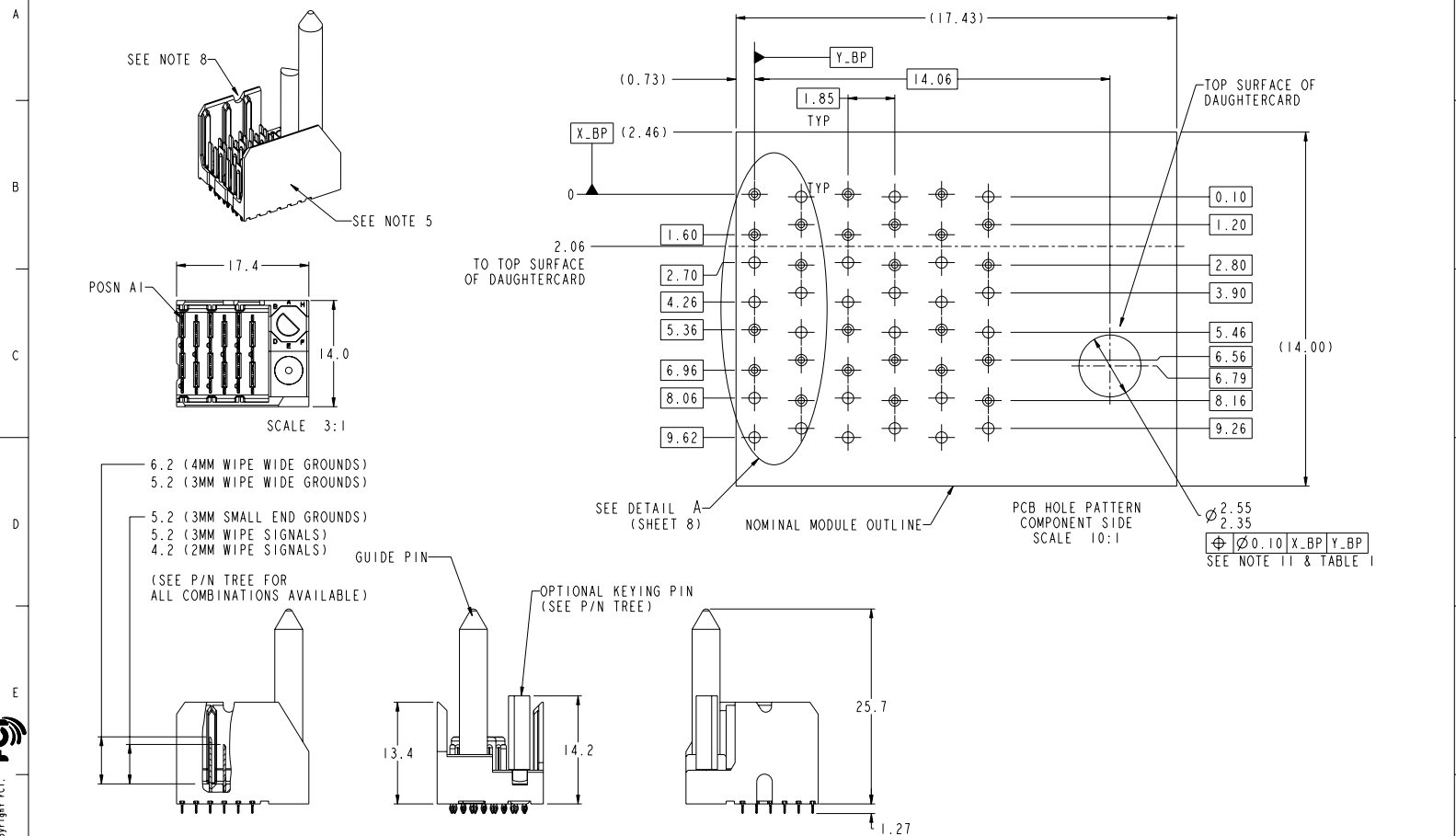


spec ref	SEE NOTES	dr	KH LEE	2010-06-15	projection	MM	size	A2	scale	2:1
tolerance std	TOLERANCES UNLESS OTHERWISE SPECIFIED	eng	NG, R	2011-05-16	chr	NG, R	2011-05-16	ecn no		Released
ASME Y14.5		appr	C.H. TAN	2011-05-16	product family		XCode	rel level		
surface	linear	0.1	±0.2							
		0.2X	±0.10							
ASME Y14.5	angular	0.2XX	±0.050							
		0°	±°							

PDS: Rev: A STATUS: Released Printed: May 20, 2011

Copyright FCJ

RIGHT POLARIZING/GUIDE MODULE

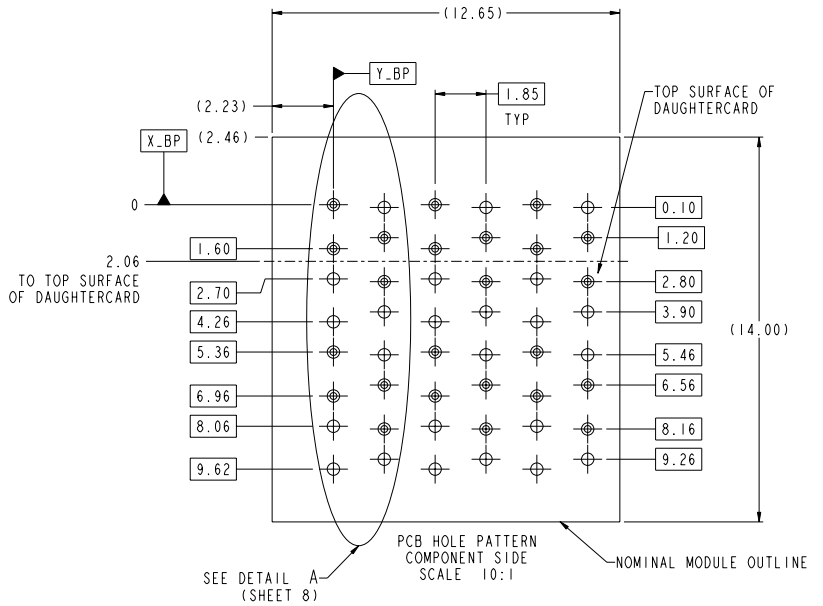
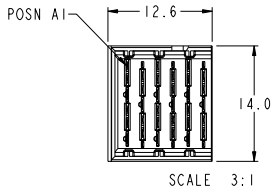
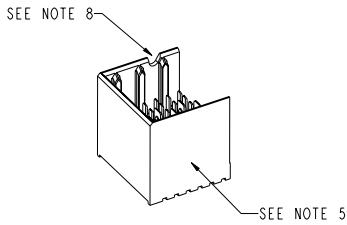


spec ref	SEE NOTES	dr	KH LEE	2010-06-15	projection	MM	size	A2	scale	2:1
tolerance std	TOLERANCES UNLESS OTHERWISE SPECIFIED	eng	NG. R	2011-05-16	chr	NG. R	2011-05-16	ecn no		Released
ASME Y14.5		appr	C.H. TAN	2011-05-16	product family		XCode	rel level		
surface	linear	0.1	±0.2		FCJ	MODULE ASSEMBLY	10113947	rev	A	
		0.2X	±0.10			VERTICAL HEADER, 6-COLUMN, 2-PAIR				
ASME Y14.5	angular	0°	±0.050			SEE P/N TREE	Product	Customer Draw	sheet 4 of 6	

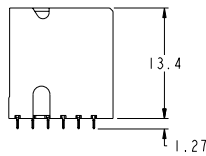
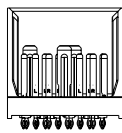
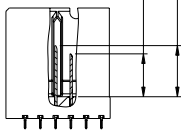
PDS: Rev: A STATUS: Released Printed: May 20, 2011

Copyright FCJ

LEFT WALL MODULE



- 6.2 (4MM WIPE WIDE GROUNDS)
  - 5.2 (3MM WIPE WIDE GROUNDS)
  - 5.2 (3MM SMALL END GROUNDS)
  - 5.2 (3MM WIPE SIGNALS)
  - 4.2 (2MM WIPE SIGNALS)
- (SEE P/N TREE FOR ALL COMBINATIONS AVAILABLE)



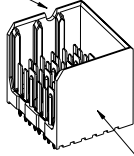
spec ref	SEE NOTES	dr	KH LEE	2010-06-15	projection	MM	size	A2	scale	2:1
tolerance std	TOLERANCES UNLESS OTHERWISE SPECIFIED	eng	NG. R	2011-05-16	chr	NG. R	2011-05-16	ecn no		Released
ASME Y14.5		appr	C.H. TAN	2011-05-16	product family		XCode	rel level		
surface	linear	0.1	±0.2	0.2X	±0.10	0.2XX	±0.050	10113947	rev	A
ASME Y14.5	angular	0°	±°							

PDS: Rev :A STATUS:Released Printed: May 20, 2011

Copyright FCJ

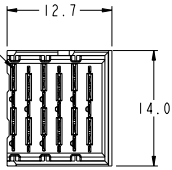
# RIGHT WALL MODULE

SEE NOTE 8



SEE NOTE 5

POSN A1

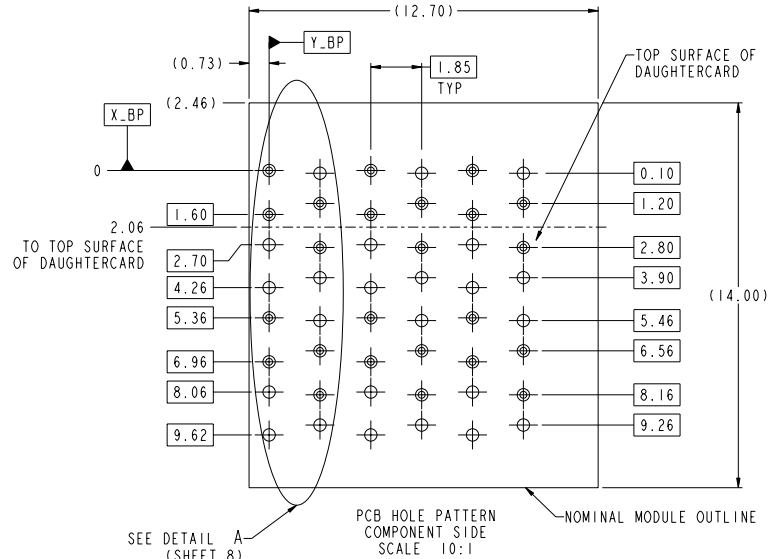
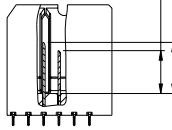


SCALE 3:1

6.2 (4MM WIPE WIDE GROUNDS)  
5.2 (3MM WIPE WIDE GROUNDS)

5.2 (3MM SMALL END GROUNDS)  
5.2 (3MM WIPE SIGNALS)  
4.2 (2MM WIPE SIGNALS)

(SEE P/N TREE FOR ALL COMBINATIONS AVAILABLE)



SEE DETAIL A (SHEET 8)

PCB HOLE PATTERN COMPONENT SIDE SCALE 10:1

NOMINAL MODULE OUTLINE

spec ref	SEE NOTES	dr	KH LEE	2010-06-15	projection	MM	size	A2	scale	2:1
tolerance std	TOLERANCES UNLESS OTHERWISE SPECIFIED	eng	NG. R	2011-05-16	chr	NG. R	2011-05-16	ecn no		Released
ASME Y14.5		appr	C.H. TAN	2011-05-16	product family		XCode	rel level		
surface	linear	0.1	±0.2		FCJ	MODULE ASSEMBLY	10113947	rev	A	
	angular	0.1XX	±0.10			VERTICAL HEADER, 6-COLUMN, 2-PAIR				
ASME Y14.5		0.1XX	±0.050			SEE P/N TREE	Product	Customer Draw	sheet 6 of 6	

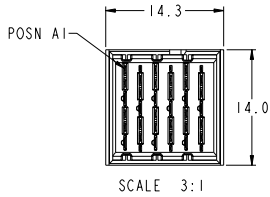
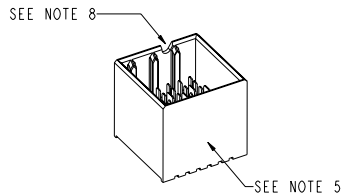
PDS: Rev :A

STATUS:Released

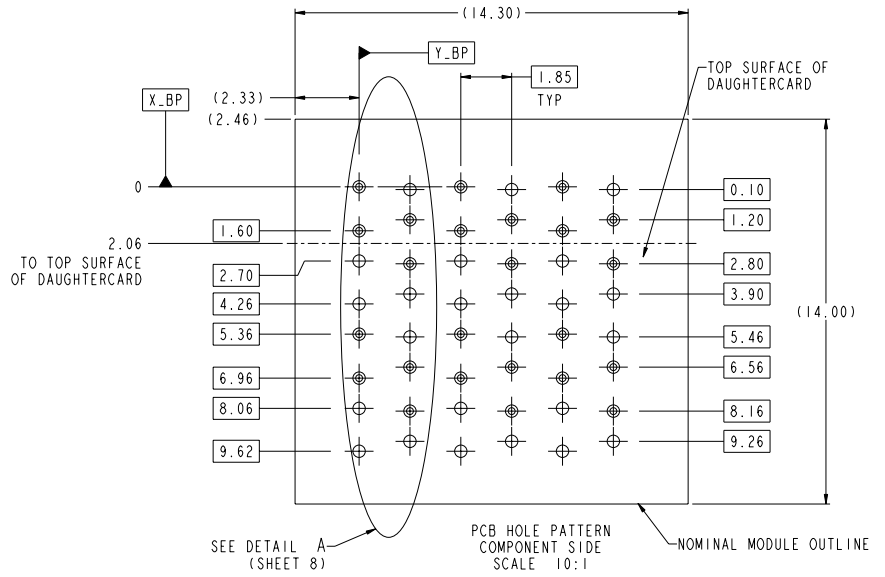
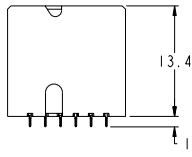
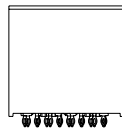
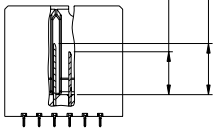
Printed: May 20, 2011

Copyright FCJ

FOUR WALL MODULE



- 6.2 (4MM WIPE WIDE GROUNDS)
  - 5.2 (3MM WIPE WIDE GROUNDS)
  - 5.2 (3MM SMALL END GROUNDS)
  - 5.2 (3MM WIPE SIGNALS)
  - 4.2 (2MM WIPE SIGNALS)
- (SEE P/N TREE FOR ALL COMBINATIONS AVAILABLE)



Copyright FCJ

spec ref	SEE NOTES	dr	KH LEE	2010-06-15	projection	MM	size	A2	scale	2:1
tolerance std	TOLERANCES UNLESS OTHERWISE SPECIFIED	eng	NG. R	2011-05-16	chr	NG. R	2011-05-16	ecn no		Released
ASME Y14.5		appr	C.H. TAN	2011-05-16	product family		XCode	rel level		
surface	linear	0.1	±0.2	0.25	±0.10	0.25	±0.050	10113947	rev	A
ASME Y14.5	angular	0°	±°							

PDS: Rev: A STATUS: Released Printed: May 20, 2011

1 2 3 4 5 6 7 8

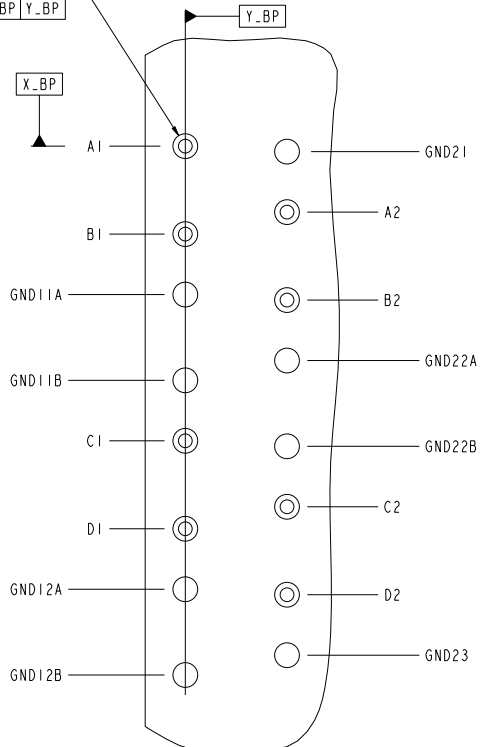
TABLE 3: PTH AND PAD SIZES WITH REFERENCE TO COMPLIANT PIN DRILL		
COMPLIANT PIN DRILL	PTH	PAD
Ø 0.55 [0.0217"]	Ø 0.45±0.05	Ø 0.85
Ø 0.45 [0.0177"]	Ø 0.36±0.05	Ø 0.75

NOTES:

1. CONNECTOR MATERIALS  
SHROUD: HIGH-TEMP THERMOPLASTIC, UL94V-0  
CONTACTS: HIGH PERFORMANCE COPPER ALLOY
2. CONTACT PLATING:  
SEPARABLE INTERFACE: PERFORMANCE-BASED PLATING, QUALIFIED TO MEET THE REQUIREMENTS OF FC1 PRODUCT SPECIFICATION GS-12-588, INCLUDING TELCORDIA GR-1217-CORE (NOVEMBER 1995) CENTRAL OFFICE TEST SEQUENCE.  
PRESS-FIT TAILS: TIN OVER NICKEL, OR TIN-LEAD ALLOY OVER NICKEL. SEE P/N TREE.
3. PRODUCT SPECIFICATION: GS-12-588 (PRELIMINARY)
4. APPLICATION SPECIFICATION: GS-20-121 (PRELIMINARY)
5. PRODUCT MARKING (PART NUMBER AND LOT CODE) ON THESE SURFACES.
6. HOUSING MUST WITHSTAND EXPOSURE TO 260°C PEAK TEMPERATURE FOR 40 SECONDS IN A CONVECTION, INFRA-RED, OR VAPOR-PHASE REFLOW OVEN.
7. PACKAGING MEETS GS-14-920 LEAD-FREE LABELING SPECIFICATION.
8. NOTCH INDICATES "ROW A" SIDE OF CONNECTOR.
9. SEE APPLICATION SPECIFICATION FOR ROUTING GUIDELINES, ADDITIONAL PTH GUIDELINES, MATED DIMENSIONS, GUIDE PN SELECTION, ETC.
10. SCREW IS OPTIONAL AND ENGAGES WITH BOTTOM OF GUIDE-PIN FROM BENEATH THE PCB FOR ADDITIONAL GUIDE-PIN SUPPORT.
11. OPTIONAL HOLE LOCATION FOR GROUNDED PIN OR ADDITIONAL GUIDE-PIN SUPPORT. SEE TABLE 1 ON SHEET 1 FOR ADDITIONAL DETAILS.

REFER TO TABLE 3 FOR PTH, DRILL & PAD SIZES

Ø 0.10 X\_BP Y\_BP



DETAIL A  
SCALE 20:1

spec ref	SEE NOTES	dr	KH LEE	2010-06-15	projection	MM	size	A2	scale	2:1
tolerance std	TOLERANCES UNLESS OTHERWISE SPECIFIED	eng	NG, R	2011-05-16	chr	NG, R	2011-05-16	ecm no		
ASME Y14.5		appr	C.H. TAN	2011-05-16	product family		XCode	rel level	Released	
surface	linear	0.1	±0.2	0.2X	±0.10	0.2XX	±0.050			
ASME Y14.5	angular	0°	±°							
		www.fcj.com		cat. no.	SEE P/N TREE	Product	Customer Draw	rev	10113947	A

PDS: Rev :A STATUS: Released Printed: May 20, 2011

1 2 3 4 5 6 7 8

