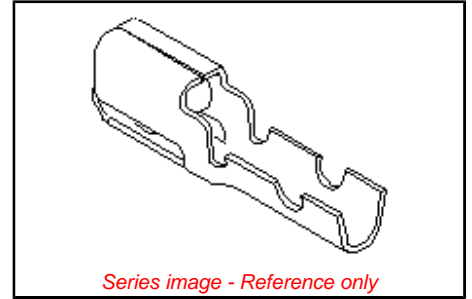


**Part Number:** [0008500005](#)  
**Status:** **Active**  
**Description:** KK® High Pressure Crimp Terminal 7879, 22-30 AWG, Bag Tin (Sn)



**General**

Product Family	Crimp Terminals
Series	7879
Product Name	KK® High Pressure

**Physical**

Gender	Female
Material - Metal	Brass
Material - Plating Mating	Tin
Material - Plating Termination	Tin
Packaging Type	Bag
Plating min: Mating (µin)	200
Plating min: Mating (µm)	5.00
Plating min: Termination (µin)	200
Plating min: Termination (µm)	5.00
Termination Interface: Style	Crimp or Compression
Wire Insulation Diameter	1.57mm (.062") max.
Wire Size AWG	22
Wire Size AWG	24
Wire Size AWG	26
Wire Size AWG	28
Wire Size AWG	30
Wire Size mm²	N/A

**Material Info**

Old Part Number	7879-1(P102)L
-----------------	---------------

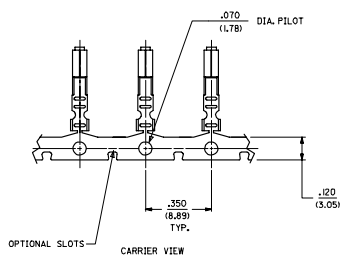
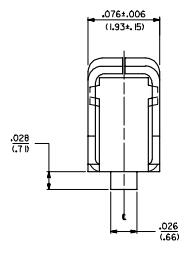
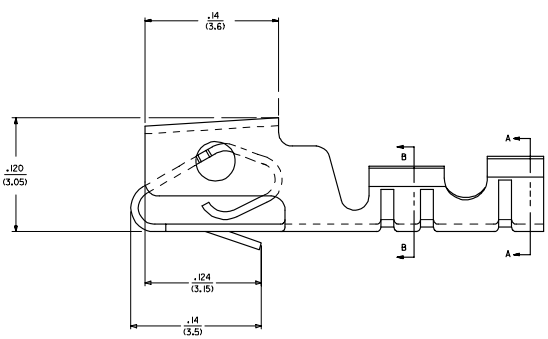
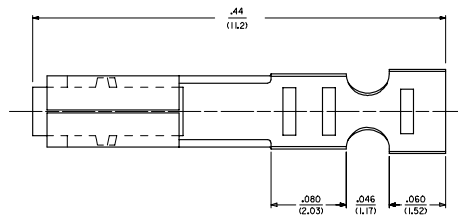
**EU RoHS**  
ELV and RoHS  
Compliant

**China RoHS**



20 19 18 17 16 15 14 13 12 11 10 9 8 7 6 5 4 3 2 1

M  
L  
K  
J  
I  
H  
G  
F  
E  
D  
C  
B  
A



- NOTES:
1. MATERIAL:
    - 1) 70/30 BRASS, PER ES-124C-6.
    - 2) PHOS. BRONZE, PER ES-124E-6.
  2. FINISH: SEE LEGEND.
  3. THIS PART CONFORMS TO PRODUCT SPEC. 7879.
  4. CRIMP FOR 24-30 AWG. WIRE WITH .050(1.27) MAX. INSULATION DIA.
  5. THIS TERMINAL TO BE USED IN 7880 HOUSING.
  6. DIMENSIONS GIVEN ACROSS CENTERLINES ARE SYMMETRICAL ABOUT THOSE CENTERLINES WITHIN HALF THE TOTAL TOLERANCE.
  7. CRIMP WILL ACCEPT 22 AWG. WIRE WITH .062(1.57) MAX. INSULATION DIA.

LEGEND:  
7879-\*\*\*

MATERIAL: +.0000 / -.0020 / .0008 THICK / .0008 THICK

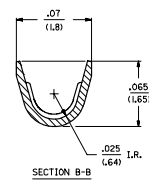
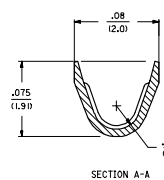
1- 70/30 BRASS, PER ES-124C-6.  
2- PHOS. BRONZE, PER ES-124E-6.

WINDING SPEC.  
BLANK PER ES-339-B  
L4 LOOSE

PLATING

(K02) OVERALL TN: .000200/(0.00508) MIN. OVER .000100/(0.00254) MIN. COPPER.  
\*(P090) OVERALL +01 TN DP: .000100/(0.00254) MIN.  
\*(Y184) OVERALL TN: .000100/(0.00254) MIN. OVERALL NICKEL UNDERPLATE: .000050/(0.00127) MIN.  
(208) SELECT GOLD: .000050/(0.00127) MIN.  
\*SELECT TN: .000100/(0.00254) MIN.  
OVERALL NICKEL UNDERPLATE: .000050/(0.00127) MIN.  
(228) SELECT GOLD: .000030/(0.00076) MIN.  
\*SELECT TN: .000100/(0.00254) MIN.  
OVERALL NICKEL UNDERPLATE: .000050/(0.00127) MIN.

\*THE PRIMARY SHIPPING CARTON WILL BE LABELED "COMPLIANT TO ROHS DIRECTIVE 2002/95/EC AND ELV ANNEX II OF DIRECTIVE 2000/53/EC" CARTONS WITHOUT THIS LABEL MAY CONTAIN PRODUCT WITH TIN-LEAD PLATING.

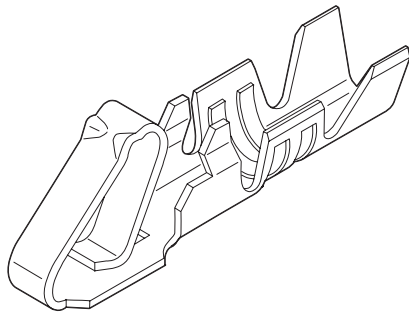


ADD. EDP. NOS. EC. NO. LCP2006-1006 DRAWING NO. 2006/0101 CHROMIUM APPROVED ZZ	QUALITY SYMBOLS	GENERAL TOLERANCES (UNLESS SPECIFIED)	DIMENSION STYLE	SCALE	DESIGN UNITS	THIRD ANGLE PROJECTION
	4 PLACES ± --- ± --- 3 PLACES ± --- ± .010 2 PLACES ± 0.25 ± .012 1 PLACE ± 0.36 ± --- ANGULAR ±1/2°	IN/MM DRAWN BY: GJZ/K DATE: 12/22/88 CHECKED BY: PATEL DATE: 12/22/88 APPROVED BY: LENZ DATE: 12/22/88	IN/MM SCALE: --- DESIGN UNITS: INCH	TITLE: (254), 100 KK, CRIMP TYPE SHROUDED TERMINAL MOLEX INCORPORATED DOCUMENT NO. SD-7879 SHEET NO. 1 OF 2		
	DRAFT WHERE APPLICABLE MUST REMAIN WITHIN DIMENSIONS	THIS DRAWING CONTAINS INFORMATION THAT IS PROPRIETARY TO MOLEX INCORPORATED AND SHOULD NOT BE USED WITHOUT WRITTEN PERMISSION				

19 18 17 16 15 14 13 12 11 10 9 8 7 6 5 4 3 2 1



# 2.54mm (.100") Pitch KK<sup>®</sup> Crimp Terminal 4809 Anti-Fishhooking



### Features and Benefits

- Avoids tangling at pre-assembly
- Available with cat ears

### Reference Information

Product Specification: PS-10-07  
Packaging: Reel or bag  
Tooling Information: See crimp tooling section  
UL File No.: E29179  
CSA File No.: LR19980  
Mates With: 5051-NM and 6471 housings  
Designed In: Inches

### Electrical

Voltage: 250V  
Current: 2.5A  
Contact Resistance: 20 milliohms max.  
Dielectric Withstanding Voltage: 1500V  
Insulation Resistance: 500K Megohms min.

### Mechanical

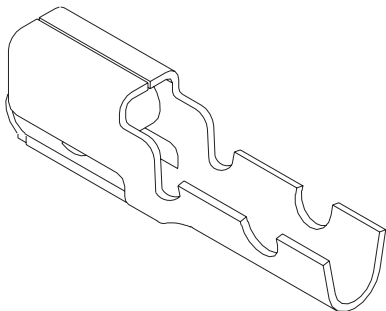
Contact Insertion Force: 681g max.  
Contact Retention to Housing: 27.21g min.  
Wire Pull-Out Force: 3 lb min.  
Mating Force: 199g max.  
Unmating Force: 57g min.  
Normal Force: 300g  
Durability: 50 cycles Gold and 25 cycles Tin

### Physical

Contact: Brass  
Plating: Gold, select Gold and Tin  
Operating Temperature: Storage— -40 to +105°C  
Operating— 0 to +75°C  
Wire Accommodation: 22 to 30 AWG

Order No.		Plating	Crimp Wire Size	Insulation Diameter	Engineering No.	Lead-free
Bag	Reel					
<a href="#">08-50-0032</a>	<a href="#">08-50-0031</a>	1.00 to 2.50 $\mu$ m Tin	22-30	1.57 (.062) max.	4809	Yes
<a href="#">08-55-0111</a>	<a href="#">08-55-0110</a>	0.38 $\mu$ m Gold in contact area only				
<a href="#">08-56-0115</a>	<a href="#">08-56-0120</a>	0.38 $\mu$ m Gold in contact area, Gold flash overall				

# 2.54mm (.100") Pitch KK<sup>®</sup> Crimp Terminal 7879 High Pressure



### Features and Benefits

- Multiple contacting points
- Patented triple cantilever with box shroud
- Suitable for high vibration requirements
- Box shroud prevents contamination to the contact surface
- Crimping die or hand tool available

### Reference Information

Product Specification: PS-7879  
Packaging: Reel or bag  
Tooling Information: See crimp tooling section  
UL File No.: E29179  
CSA File No.: LR19980  
Use With: 7880 housings  
Designed In: Inches

### Electrical

Voltage: 250V  
Current: 2.5A  
Contact Resistance: 10 milliohms max.  
Dielectric Withstanding Voltage: 1500V  
Insulation Resistance: 50K Megohms min.

### Mechanical

Wire Pull-Out Force:

Wire Gauge (AWG)	22	24	26	28	30
Pull-Out Force (lb)	10	8	6	4	3

Mating Force: 475g max.  
Unmating Force: 100g min.  
Normal Force: 430g min.

### Physical

Contact: Brass  
Plating: See Table  
Wire Accommodation: 22 to 30 AWG  
Insulation Range: 1.58mm (.062") diameter max.

Order No.		Plating	Wire Gauge (AWG)	Insulation Diameter	Lead-free
Reel	Bag				
<a href="#">08-50-0004</a>	<a href="#">08-50-0005</a>	Tin/Copper	22-30	1.57 (.062) max.	Yes
<a href="#">08-55-0124</a>	<a href="#">08-55-0129</a>	Select Gold			

Recommended wire range assumes stranded wire

