

Switch Language

English

Need Assistance?

Contact Us  
Find a Distributor  
Order Samples  
Tech Library

Printer-friendly page

Email this page

[Home](#)   [PCB Headers](#)   [Datasheet](#)

**Part Number:** 0026481065

**Status:** Active

**Description:** 3.96mm (.156") Pitch KK® Header, Breakaway, Vertical, Square Pin, with Friction Lock, 6 Circuits, Tin (Sn) Plating

**Documents:**

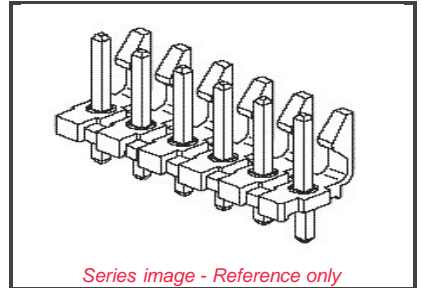
*Note - Please disable browser pop-up blockers for documents on www.molex.com*

[Drawing \(PDF\)](#)

[Product Specification PS-08-50 \(PDF\)](#)

[3D Model](#)

[Related Catalog Page \(PDF\)](#)



**Order Products:**

[Check Distributor Inventory](#)

[Add to My Parts](#)

[Request Samples](#)

**Part Detail:** [\(show all\)](#)

[General](#)   [Physical](#)   [Electrical](#)   [Material Info](#)

**General**

Product Family	PCB Headers
Series	<b>41671</b>
Application	Wire-to-Board
Product Name	KK®

**Physical**

Breakaway	Yes
Circuits (Loaded)	6
Circuits (maximum)	6
Color - Resin	Black
Durability (mating cycles) min	25 cycles
Flammability	94V-0
Lock to Mating Part	Yes
Material - Metal	Brass
Material - Plating Mating	Tin
Material - Plating Termination	Tin
Material - Resin	Polyester
Number of Rows	1
Orientation	Vertical
PC Tail Length (in)	0.172 In
PC Tail Length (mm)	4.37 mm
PCB Locator	No
PCB Retention	None
PCB Thickness Recommended (in)	0.062 In
PCB Thickness Recommended (mm)	1.60 mm
Packaging Type	Bag
Pitch - Mating Interface (in)	0.156 In
Pitch - Mating Interface (mm)	3.96 mm
Plating min: Mating (uin)	200
Plating min: Mating (um)	5
Plating min: Termination (uin)	200
Plating min: Termination (um)	5
Polarized to Mating Part	Yes
Polarized to PCB	No
Shrouded	Partial

**EU RoHS**

**ELV and RoHS Compliant**

**China RoHS**



**Need more information on product compliance?**

Email [productcompliance@molex.com](mailto:productcompliance@molex.com)

Please visit the [Contact Us](#) section for any non-product compliance questions.

Duration at Max. Process Temperature (seconds)	5
Lead-free Process Capability	Wave Capable (TH only)
Max. Cycles at Max. Process Temperature	1
Process Temperature max. C	235

**Search Parts in this Series**

[41671 Series](#)

**Mates With**

[3069](#) Crimp Housing, [2139](#) Crimp Housing, [6442](#) KK Crimp Housing, [41695](#) Crimp Housing, [7674](#) IDT Assembly, [7675](#) IDT Connector, [41815](#) PCB Connector, [2145](#) PCB Connector, [3215](#) KK PCB Connector

Stackable	No
Temperature Range - Operating	0°C to +75°C
Termination Interface: Style	Through Hole

**Electrical**

CSA	LR19980
Current - Maximum	7.000 Amp
UL	E29179
Voltage - Maximum	250V

**Material Info**

Old Part Number	A-41671-A06A102
-----------------	-----------------

**Reference - Drawing Numbers**

Product Specification	PS-08-50
Sales Drawing	SD-41671-001

6 5 4 3 2 1

D

D

C

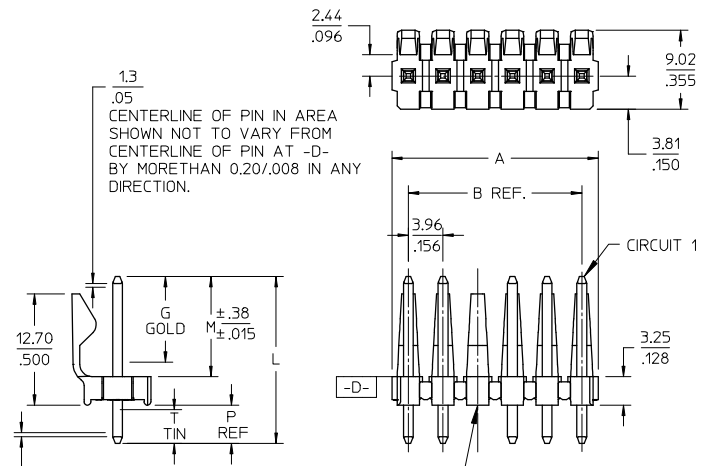
C

B

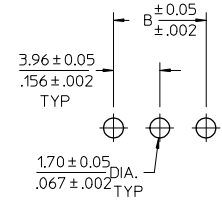
B

A

A



1.3  
.05  
CENTERLINE OF PIN IN AREA SHOWN NOT TO VARY FROM CENTERLINE OF PIN AT -D- BY MORE THAN 0.20/.008 IN ANY DIRECTION.



PCB LAYOUT: COMPONENT SIDE  
RECOMMENDED PCB THICKNESS:  
1.57 ± .18 / .062 ± .007

A-41671- \* N \* \* \* \*  
VOID LOCATIONS  
BLANK-NO VOIDS  
NO-CKT NO VOIDED  
MULT-VOIDS=51 UP

OPTION -PIN- PACKING  
A-BRASS -2161- BULK PACK  
B-BRASS -2161- TUBE PACK  
C-BRASS -43294- BULK PACK

NO OF CKTS  
DIM M.L.P  
PLATING

- NOTES:
- MATERIAL: POLYESTER, 94V-0, MOLDED BLACK  
0.00254/.000100 MIN. COPPER.
  - FINISH: PER ES-88  
(102) OVERALL TIN: 0.00508/.000200 MIN. OVER  
0.00254/.000100 MIN. COPPER.  
(122) OVERALL TIN: 0.00381/.000150 MIN  
OVERALL NICKEL: .00076/.000030 MIN  
(208) SELECT GOLD: 0.00038/.000015 MIN.  
\*SELECT TIN: 0.00254/.000100 MIN.  
OVERALL NICKEL UNDERPLATE: 0.00127/.000050 MIN.  
(228) SELECT GOLD: 0.00076/.000030 MIN.  
\*SELECT TIN: 0.00254/.000100 MIN.  
OVERALL NICKEL UNDERPLATE: 0.00127/.000050 MIN.  
(501) OVERALL GOLD: 0.00051/.000020  
OVERALL NICKEL: 0.00076/.000030  
(503) OVERALL GOLD: 0.00076/.000030  
OVERALL NICKEL: 0.00127/.000050
- \*THE PRIMARY SHIPPING CARTON WILL BE LABELED  
\*COMPLIANT TO ROHS DIRECTIVE 2002/95/EC  
AND ELV ANNEX II OF DIRECTIVE 2000/53/EC\*.  
CARTONS WITHOUT THIS LABEL MAY CONTAIN  
PRODUCT WITH TIN-LEAD PLATING.
- PRODUCT SPECIFICATION: PS-08-50.
  - PACKAGING INFO: SEE TABLE.
  - SOLDERABILITY: PER SMES-152.
  - PIN PUSH-OUT FORCE: PRIOR TO SOLDERING, 3 LB MIN.  
FORCE IN EITHER DIRECTION SHALL BE REQUIRED TO  
PUSH THE PIN OUT OF THE HEADER.
  - PARTS ARE STACKABLE END TO END ON 3.96/.156 CENTERS.  
(SPACING TABS MUST BE REMOVED ON CIRCUIT SIZES  
1-23 BEFORE PARTS ARE STACKABLE.
  - THIS PART CONFORMS TO CLASS B REQUIREMENTS OF  
COSMETIC SPECIFICATION PS-45499-002.

CKT	B	A
2	3.96 .156	6.78/7.87 .267/1.310
3	7.92 .312	10.74/11.84 .423/1.466
4	11.89 .468	14.71/15.80 .579/1.622
5	15.85 .624	18.67/19.76 .735/1.778
6	19.81 .780	22.63/23.72 .891/1.934
7	23.77 .936	26.59/27.69 1.047/1.090
8	27.74 1.092	30.56/31.65 1.203/1.246
9	31.70 1.248	34.52/35.61 1.359/1.402
10	35.66 1.404	38.48/39.57 1.515/1.558
11	39.62 1.560	42.44/43.54 1.671/1.714
12	43.59 1.716	46.41/47.50 1.827/1.870
13	47.55 1.872	50.37/51.46 1.983/2.026
14	51.51 2.028	54.33/55.42 2.139/2.182
15	55.47 2.184	58.29/59.39 2.295/2.338
16	59.44 2.340	62.26/63.35 2.451/2.494
17	63.40 2.496	66.22/67.31 2.607/2.650
18	67.36 2.652	70.18/71.27 2.763/2.806
19	71.32 2.808	74.14/75.23 2.919/2.962
20	75.29 2.964	78.11/79.20 3.075/3.118
21	79.25 3.120	82.07/83.16 3.231/3.274
22	83.21 3.276	86.03/87.12 3.387/3.430
23	87.17 3.432	89.94/91.08 3.541/3.586
24	91.14 3.588	93.85/95.00 3.695/3.740

2-*	AH8
1	REV
SHT	REV

ADD P/N TO SHT 8	2008/06/25
EC NO: UCP2008-3117	DRWN:GVERILL
2008/07/01	2008/07/01
CHKD:AEHAG	APPR:FSMITH
DESCRIPTION	
REV	

QUALITY SYMBOLS
▽=0
▽=0

GENERAL TOLERANCES (UNLESS SPECIFIED)	
	mm INCH
4 PLACES	± --- ± ---
3 PLACES	± --- ± .010
2 PLACES	± 0.25 ± .015
1 PLACE	± 0.38 ± ---
ANGULAR ±1/2°	
DRAFT WHERE APPLICABLE MUST REMAIN WITHIN DIMENSIONS	

DIMENSION STYLE	
MM/IN	
DRAWN BY	DATE
JSCHAFFER	2004/04/05
CHECKED BY	DATE
KSAMIEC	2004/04/05
APPROVED BY	DATE
MARGULIS	2004/04/05
MATERIAL NO.	
SEE CHART	

SCALE	DESIGN UNITS	THIRD ANGLE PROJECTION
1.5:1	INCH	☉ □
TITLE		
KK 156 HEADER ASSEMBLY FRICTION LOCK STRAIGHT BREAKAWAY		
MOLEX INCORPORATED		
DOCUMENT NO.	SHEET NO.	
SD-41671-001	1 OF 7	
THIS DRAWING CONTAINS INFORMATION THAT IS PROPRIETARY TO MOLEX INCORPORATED AND SHOULD NOT BE USED WITHOUT WRITTEN PERMISSION		

tb\_frame\_A\_P\_AM\_T  
Rev. E 2006/04/15

5

4

3

2

1

Group No:	A-41671-ANA102	Group No:	A-41671-CNA208	Group No:	A-41671-CNA228	
Pin No:	2161-1 (102)	Pin No:	43294-0236	Pin No:	43294-0237	
Plating:	102 TIN	Plating:	208 15 GOLD	Plating:	228 30 GOLD	
Pin Length L	.750 / 19.05	Pin Length L	.750 / 19.05	Pin Length L	.750 / 19.05	
Mating M	.450 / 11.43	Mating M	.450 / 11.43	Mating M	.450 / 11.43	
Gold Loc G	NA	Gold Loc G	.270 / 6.86	Gold Loc G	.270 / 6.86	
PC Tail P	.172 / 4.37	PC Tail P	.172 / 4.37	PC Tail P	.172 / 4.37	
Tin Loc T	OVERALL	Tin Loc T	.160 / 4.06	Tin Loc T	.160 / 4.06	
Voided Ckts	NONE	Voided Ckts	NONE	Voided Ckts	NONE	
Pack Per	PK-41671-001	Pack Per	PK-41671-001	Pack Per	PK-41671-001	
Ckts	Material No	Engineer Number	Material No	Engineer Number	Material No	Engineer Number
2	26-48-1025	A-41671-A02A102	41671-0001	A-41671-C02A208	41671-0024	A-41671-C02A228
3	26-48-1035	A-41671-A03A102	41671-0002	A-41671-C03A208	41671-0025	A-41671-C03A228
4	26-48-1045	A-41671-A04A102	41671-0003	A-41671-C04A208	41671-0026	A-41671-C04A228
5	26-48-1055	A-41671-A05A102	41671-0004	A-41671-C05A208	41671-0027	A-41671-C05A228
6	26-48-1065	A-41671-A06A102	41671-0005	A-41671-C06A208	41671-0028	A-41671-C06A228
7	26-48-1075	A-41671-A07A102	41671-0006	A-41671-C07A208	41671-0029	A-41671-C07A228
8	26-48-1085	A-41671-A08A102	41671-0007	A-41671-C08A208	41671-0030	A-41671-C08A228
9	26-48-1095	A-41671-A09A102	41671-0008	A-41671-C09A208	41671-0031	A-41671-C09A228
10	26-48-1105	A-41671-A10A102	41671-0009	A-41671-C10A208	41671-0032	A-41671-C10A228
11	26-48-1115	A-41671-A11A102	41671-0010	A-41671-C11A208	41671-0033	A-41671-C11A228
12	26-48-1125	A-41671-A12A102	41671-0011	A-41671-C12A208	41671-0034	A-41671-C12A228
13	26-48-1135	A-41671-A13A102	41671-0012	A-41671-C13A208	41671-0035	A-41671-C13A228
14	26-48-1145	A-41671-A14A102	41671-0013	A-41671-C14A208	41671-0036	A-41671-C14A228
15	26-48-1155	A-41671-A15A102	41671-0014	A-41671-C15A208	41671-0037	A-41671-C15A228
16	26-48-1165	A-41671-A16A102	41671-0015	A-41671-C16A208	41671-0038	A-41671-C16A228
17	26-48-1175	A-41671-A17A102	41671-0016	A-41671-C17A208	41671-0039	A-41671-C17A228
18	26-48-1185	A-41671-A18A102	41671-0017	A-41671-C18A208	41671-0040	A-41671-C18A228
19	26-48-1195	A-41671-A19A102	41671-0018	A-41671-C19A208	41671-0041	A-41671-C19A228
20	26-48-1205	A-41671-A20A102	41671-0019	A-41671-C20A208	41671-0042	A-41671-C20A228
21	26-48-1215	A-41671-A21A102	41671-0020	A-41671-C21A208	41671-0043	A-41671-C21A228
22	26-48-1225	A-41671-A22A102	41671-0021	A-41671-C22A208	41671-0044	A-41671-C22A228
23	26-48-1235	A-41671-A23A102	41671-0022	A-41671-C23A208	41671-0045	A-41671-C23A228
24	26-48-1245	A-41671-A24A102	41671-0023	A-41671-C24A208	41671-0046	A-41671-C24A228
STD TIN CATALOG PRODUCT		STD 15 GOLD CATALOG PRODUCT		STD 30 GOLD CATALOG PRODUCT		

<b>REV:</b> <b>AH8</b>	<b>ECR/ECN INFORMATION:</b> <b>EC. NO. UCP2008-3117</b> <b>DATE: 7/1/2008</b>	<b>TITLE:</b> <b>KK .156 HEADER ASSEMBLY FRICTION LOCK STRAIGHT 2-24 CKTS.</b>	<b>SHEET No.</b> <b>- 2 -</b>
<b>DOCUMENT NUMBER:</b> <b>SD - 41671 - 001</b>	<b>CREATED / REVISED BY:</b> <b>GAVERRILL</b>	<b>CHECKED BY:</b> <b>AELHAG</b>	<b>APPROVED BY:</b> <b>FSMITH</b>
<small>TEMPLATE FILENAME: PRODUCT_SPEC [SIZE_A](V.1). DOC</small>			

Ckts	Material No	Engineer Number	Material No	Engineer Number	Material No	Engineer Number	Material No	Engineer Number
2	26-48-2025	A-41671-A02A501	26-48-9026	A-41671-A02A503	26-48-9023	A-41671-A02D102	41671-0064	A-41671-A02B102
3	26-48-2035	A-41671-A03A501	41671-0047	A-41671-A03A503	26-48-9033	A-41671-A03D102	41671-0065	A-41671-A03B102
4	26-48-2045	A-41671-A04A501	41671-0048	A-41671-A04A503	26-48-9043	A-41671-A04D102	41671-0066	A-41671-A04B102
5	26-48-2055	A-41671-A05A501	26-48-9056	A-41671-A05A503	26-48-9053	A-41671-A05D102	41671-0067	A-41671-A05B102
6	26-48-2065	A-41671-A06A501	41671-0049	A-41671-A06A503	26-48-9063	A-41671-A06D102	41671-0068	A-41671-A06B102
7	26-48-2075	A-41671-A07A501	41671-0050	A-41671-A07A503	26-48-9073	A-41671-A07D102	41671-0069	A-41671-A07B102
8	26-48-2085	A-41671-A08A501	41671-0051	A-41671-A08A503	26-48-9083	A-41671-A08D102	41671-0070	A-41671-A08B102
9	26-48-2095	A-41671-A09A501	26-48-9096	A-41671-A09A503	26-48-9093	A-41671-A09D102	26-48-6095	A-41671-A09B102
10	26-48-2105	A-41671-A10A501	26-48-9106	A-41671-A10A503	26-48-9103	A-41671-A10D102	41671-0071	A-41671-A10B102
11	26-48-2115	A-41671-A11A501	41671-0052	A-41671-A11A503	26-48-9113	A-41671-A11D102	41671-0072	A-41671-A11B102
12	26-48-2125	A-41671-A12A501	26-48-9126	A-41671-A12A503	26-48-9123	A-41671-A12D102	41671-0073	A-41671-A12B102
13	26-48-2135	A-41671-A13A501	41671-0053	A-41671-A13A503	26-48-9133	A-41671-A13D102	41671-0074	A-41671-A13B102
14	26-48-2145	A-41671-A14A501	41671-0054	A-41671-A14A503	26-48-9143	A-41671-A14D102	41671-0075	A-41671-A14B102
15	26-48-2155	A-41671-A15A501	41671-0055	A-41671-A15A503	26-48-9153	A-41671-A15D102	41671-0076	A-41671-A15B102
16	26-48-2165	A-41671-A16A501	41671-0056	A-41671-A16A503	26-48-9163	A-41671-A16D102	41671-0077	A-41671-A16B102
17	26-48-2175	A-41671-A17A501	41671-0057	A-41671-A17A503	26-48-9173	A-41671-A17D102	41671-0078	A-41671-A17B102
18	26-48-2185	A-41671-A18A501	41671-0058	A-41671-A18A503	26-48-9183	A-41671-A18D102	41671-0079	A-41671-A18B102
19	26-48-2195	A-41671-A19A501	41671-0059	A-41671-A19A503	26-48-9193	A-41671-A19D102	41671-0080	A-41671-A19B102
20	26-48-2205	A-41671-A20A501	41671-0060	A-41671-A20A503	26-48-9203	A-41671-A20D102	41671-0081	A-41671-A20B102
21	26-48-2215	A-41671-A21A501	41671-0061	A-41671-A21A503	26-48-9213	A-41671-A21D102	41671-0082	A-41671-A21B102
22	26-48-2225	A-41671-A22A501	41671-0062	A-41671-A22A503	26-48-9223	A-41671-A22D102	41671-0083	A-41671-A22B102
23	26-48-2235	A-41671-A23A501	41671-0063	A-41671-A23A503	26-48-9233	A-41671-A23D102	41671-0084	A-41671-A23B102
24	26-48-2245	A-41671-A24A501	26-48-9246	A-41671-A24A503	26-48-9243	A-41671-A24D102	26-48-6245	A-41671-A24B102

<b>REV:</b> <b>AH8</b>	<b>ECR/ECN INFORMATION:</b> <b>EC. NO. UCP2008-3117</b> <b>DATE: 7/1/2008</b>	<b>TITLE:</b> <b>KK .156 HEADER ASSEMBLY</b> <b>FRICITION LOCK STRAIGHT</b> <b>2-24 CKTS.</b>	<b>SHEET No.</b> <b>- 3 -</b>
<b>DOCUMENT NUMBER:</b> <b>SD - 41671 - 001</b>	<b>CREATED / REVISED BY:</b> <b>GAVERRILL</b>	<b>CHECKED BY:</b> <b>AELHAG</b>	<b>APPROVED BY:</b> <b>FSMITH</b>
<small>TEMPLATE FILENAME: PRODUCT_SPEC [SIZE_A](V.1). DOC</small>			

Group No:	A-41671-ANF102
Pin No:	2161-24 (102)
Plating:	102 TIN
Pin Length L	.800 / 20.32
Mating M	.480 / 12.19
Gold Loc G	NA
PC Tail P	.192 / 4.88
Tin Loc T	OVERALL
Voided Ckts	NONE
Pack Per	PK-41671-001

Group No:	A-41671-ANB501
Pin No:	2161-1 (501)
Plating:	501 GOLD
Pin Length L	.750 / 19.05
Mating M	.523 / 13.28
Gold Loc G	OVERALL
PC Tail P	.099 / 2.51
Tin Loc T	NA
Voided Ckts	NONE
Pack Per	PK-41671-001

Group No:	A-41671-ANF501
Pin No:	2161-24 (501)
Plating:	501 GOLD
Pin Length L	.800 / 20.32
Mating M	.480 / 12.19
Gold Loc G	OVERALL
PC Tail P	.192 / 4.88
Tin Loc T	NA
Voided Ckts	NONE
Pack Per	PK-41671-001

Group No:	A-41671-ANN102
Pin No:	2161-19 (102)
Plating:	102 TIN
Pin Length L	1.032 / 26.21
Mating M	.450 / 11.43
Gold Loc G	NA
PC Tail P	.454 / 11.53
Tin Loc T	OVERALL
Voided Ckts	NONE
Pack Per	PK-41671-001

Ckts	Material No	Engineer Number
2	26-48-4026	A-41671-A02F102
3	26-48-4036	A-41671-A03F102
4	26-48-4046	A-41671-A04F102
5	26-48-4056	A-41671-A05F102
6	26-48-4066	A-41671-A06F102
7	26-48-4076	A-41671-A07F102
8	26-48-4086	A-41671-A08F102
9	26-48-4096	A-41671-A09F102
10	26-48-4106	A-41671-A10F102
11	26-48-4116	A-41671-A11F102
12	26-48-4126	A-41671-A12F102
13	26-48-4136	A-41671-A13F102
14	26-48-4146	A-41671-A14F102
15	26-48-4156	A-41671-A15F102
16	26-48-4166	A-41671-A16F102
17	26-48-4176	A-41671-A17F102
18	26-48-4186	A-41671-A18F102
19	26-48-4196	A-41671-A19F102
20	26-48-4206	A-41671-A20F102
21	26-48-4216	A-41671-A21F102
22	26-48-4226	A-41671-A22F102
23	26-48-4236	A-41671-A23F102
24	26-48-4246	A-41671-A24F102

Material No	Engineer Number
26-48-2027	A-41671-A02B501
26-48-2037	A-41671-A03B501
26-48-2047	A-41671-A04B501
26-48-2057	A-41671-A05B501
26-48-2067	A-41671-A06B501
26-48-2077	A-41671-A07B501
26-48-2087	A-41671-A08B501
26-48-2097	A-41671-A09B501
26-48-2107	A-41671-A10B501
26-48-2117	A-41671-A11B501
26-48-2127	A-41671-A12B501
26-48-2137	A-41671-A13B501
26-48-2147	A-41671-A14B501
26-48-2157	A-41671-A15B501
26-48-2167	A-41671-A16B501
26-48-2177	A-41671-A17B501
26-48-2187	A-41671-A18B501
26-48-2197	A-41671-A19B501
26-48-2207	A-41671-A20B501
26-48-2217	A-41671-A21B501
26-48-2227	A-41671-A22B501
26-48-2237	A-41671-A23B501
26-48-2247	A-41671-A24B501

Material No	Engineer Number
41671-0250	A-41671-A02F501
41671-0350	A-41671-A03F501
41671-0450	A-41671-A04F501
41671-0550	A-41671-A05F501
41671-0650	A-41671-A06F501
41671-0750	A-41671-A07F501
41671-0850	A-41671-A08F501
41671-0950	A-41671-A09F501
41671-1050	A-41671-A10F501
41671-1150	A-41671-A11F501
41671-1250	A-41671-A12F501
41671-1350	A-41671-A13F501
41671-1450	A-41671-A14F501
41671-1550	A-41671-A15F501
41671-1650	A-41671-A16F501
41671-1750	A-41671-A17F501
41671-1850	A-41671-A18F501
41671-1950	A-41671-A19F501
41671-2050	A-41671-A20F501
41671-2150	A-41671-A21F501
41671-2250	A-41671-A22F501
41671-2350	A-41671-A23F501
41671-2450	A-41671-A24F501

Material No	Engineer Number
	A-41671-A02N102
	A-41671-A03N102
	A-41671-A04N102
	A-41671-A05N102
	A-41671-A06N102
	A-41671-A07N102
	A-41671-A08N102
	A-41671-A09N102
	A-41671-A10N102
	A-41671-A11N102
	A-41671-A12N102
	A-41671-A13N102
	A-41671-A14N102
	A-41671-A15N102
	A-41671-A16N102
	A-41671-A17N102
	A-41671-A18N102
	A-41671-A19N102
	A-41671-A20N102
	A-41671-A21N102
	A-41671-A22N102
	A-41671-A23N102
26-48-8247	A-41671-A24N102

<b>REV:</b> <b>AH8</b>	<b>ECR/ECN INFORMATION:</b> <b>EC. NO. UCP2008-3117</b> <b>DATE: 7/1/2008</b>	<b>TITLE:</b> <b>KK .156 HEADER ASSEMBLY</b> <b>FRICITION LOCK STRAIGHT</b> <b>2-24 CKTS.</b>	<b>SHEET No.</b> <b>- 4 -</b>
<b>DOCUMENT NUMBER:</b> <b>SD - 41671 - 001</b>	<b>CREATED / REVISED BY:</b> <b>GAVERRILL</b>	<b>CHECKED BY:</b> <b>AELHAG</b>	<b>APPROVED BY:</b> <b>FSMITH</b>

TEMPLATE FILENAME: PRODUCT\_SPEC [SIZE\_A](V.1). DOC

Group No:	A-41671-CNP228	Group No:	A-41671-CNR208	Group No:	A-41671-ANT102	Group No:	A-41671-ANA122	
Pin No:	43294-0282	Pin No:	43294-0344	Pin No:	2161-37 (102)	Pin No:	2161-1 (122)	
Plating:	228 30 GOLD	Plating:	208 15 GOLD	Plating:	102 TIN	Plating:	122 TIN	
Pin Length L	.800 / 20.32	Pin Length L	.870 / 22.10	Pin Length L	1.100 / 27.94	Pin Length L	.750 / 19.05	
Mating M	.523 / 13.28	Mating M	.450 / 11.43	Mating M	.486 / 12.34	Mating M	.450 / 11.43	
Gold Loc G	.350 / 8.89	Gold Loc G	.400 / 10.16	Gold Loc G	NA	Gold Loc G	NA	
PC Tail P	.149 / 3.78	PC Tail P	.292 / 7.42	PC Tail P	.486 / 12.34	PC Tail P	.172 / 4.37	
Tin Loc T	.200 / 5.08	Tin Loc T	.200 / 5.08	Tin Loc T	OVERALL	Tin Loc T	OVERALL	
Voided Ckts	NONE	Voided Ckts	NONE	Voided Ckts	NONE	Voided Ckts	NONE	
Pack Per	PK-41671-001	Pack Per	PK-41671-001	Pack Per	PK-41671-001	Pack Per	PK-41671-001	
Ckts	Material No	Engineer Number	Material No	Engineer Number	Material No	Engineer Number	Material No	Engineer Number
2	41671-2451	A-41671-C02P228	41671-2474	A-41671-C02R208	41671-3400	A-41671-A02T102	41671-3423	A-41671-A02A122
3	41671-2452	A-41671-C03P228	41671-2475	A-41671-C03R208	41671-3401	A-41671-A03T102	41671-3424	A-41671-A03A122
4	41671-2453	A-41671-C04P228	41671-2476	A-41671-C04R208	41671-3402	A-41671-A04T102	41671-3425	A-41671-A04A122
5	41671-2454	A-41671-C05P228	41671-2477	A-41671-C05R208	41671-3403	A-41671-A05T102	41671-3426	A-41671-A05A122
6	41671-2455	A-41671-C06P228	41671-2478	A-41671-C06R208	41671-3404	A-41671-A06T102	41671-3427	A-41671-A06A122
7	41671-2456	A-41671-C07P228	41671-2479	A-41671-C07R208	41671-3405	A-41671-A07T102	41671-3428	A-41671-A07A122
8	41671-2457	A-41671-C08P228	41671-2480	A-41671-C08R208	41671-3406	A-41671-A08T102	41671-3429	A-41671-A08A122
9	41671-2458	A-41671-C09P228	41671-2481	A-41671-C09R208	41671-3407	A-41671-A09T102	41671-3430	A-41671-A09A122
10	41671-2459	A-41671-C10P228	41671-2482	A-41671-C10R208	41671-3408	A-41671-A10T102	41671-3431	A-41671-A10A122
11	41671-2460	A-41671-C11P228	41671-2483	A-41671-C11R208	41671-3409	A-41671-A11T102	41671-3432	A-41671-A11A122
12	41671-2461	A-41671-C12P228	41671-2484	A-41671-C12R208	41671-3410	A-41671-A12T102	41671-3433	A-41671-A12A122
13	41671-2462	A-41671-C13P228	41671-2485	A-41671-C13R208	41671-3411	A-41671-A13T102	41671-3434	A-41671-A13A122
14	41671-2463	A-41671-C14P228	41671-2486	A-41671-C14R208	41671-3412	A-41671-A14T102	41671-3435	A-41671-A14A122
15	41671-2464	A-41671-C15P228	41671-2487	A-41671-C15R208	41671-3413	A-41671-A15T102	41671-3436	A-41671-A15A122
16	41671-2465	A-41671-C16P228	41671-2488	A-41671-C16R208	41671-3414	A-41671-A16T102	41671-3437	A-41671-A16A122
17	41671-2466	A-41671-C17P228	41671-2489	A-41671-C17R208	41671-3415	A-41671-A17T102	41671-3438	A-41671-A17A122
18	41671-2467	A-41671-C18P228	41671-2490	A-41671-C18R208	41671-3416	A-41671-A18T102	41671-3439	A-41671-A18A122
19	41671-2468	A-41671-C19P228	41671-2491	A-41671-C19R208	41671-3417	A-41671-A19T102	41671-3440	A-41671-A19A122
20	41671-2469	A-41671-C20P228	41671-2492	A-41671-C20R208	41671-3418	A-41671-A20T102	41671-3441	A-41671-A20A122
21	41671-2470	A-41671-C21P228	41671-2493	A-41671-C21R208	41671-3419	A-41671-A21T102	41671-3442	A-41671-A21A122
22	41671-2471	A-41671-C22P228	41671-2494	A-41671-C22R208	41671-3420	A-41671-A22T102	41671-3443	A-41671-A22A122
23	41671-2472	A-41671-C23P228	41671-2495	A-41671-C23R208	41671-3421	A-41671-A23T102	41671-3444	A-41671-A23A122
24	41671-2473	A-41671-C24P228	41671-2496	A-41671-C24R208	41671-3422	A-41671-A24T102	41671-3445	A-41671-A24A122

<b>REV:</b> <b>AH8</b>	<b>ECR/ECN INFORMATION:</b> <b>EC. NO. UCP2008-3117</b> <b>DATE: 7/1/2008</b>	<b>TITLE:</b> <b>KK .156 HEADER ASSEMBLY</b> <b>FRICITION LOCK STRAIGHT</b> <b>2-24 CKTS.</b>	<b>SHEET No.</b> <b>- 5 -</b>
<b>DOCUMENT NUMBER:</b> <b>SD - 41671 - 001</b>	<b>CREATED / REVISED BY:</b> <b>GAVERRILL</b>	<b>CHECKED BY:</b> <b>AELHAG</b>	<b>APPROVED BY:</b> <b>FSMITH</b>

TEMPLATE FILENAME: PRODUCT\_SPEC [SIZE\_A](V.1).DOC

Group No:	A-41671-ANA102-* REF SEE SHT 1		Group No:	A-41671-ANA102-* REF SEE SHT 1		Group No:	A-41671-ANA102-* REF SEE SHT 1	
Pin No:			Pin No:			Pin No:		
Plating:			Plating:			Plating:		
Pin Length L			Pin Length L			Pin Length L		
Mating M			Mating M			Mating M		
Gold Loc G			Gold Loc G			Gold Loc G		
PC Tail P			PC Tail P			PC Tail P		
Tin Loc T			Tin Loc T			Tin Loc T		
Voided Ckts	SEE CHART BELOW		Voided Ckts	SEE CHART BELOW		Voided Ckts	SEE CHART BELOW	
Pack Per			Pack Per			Pack Per		
Material No	Engineer Number	Void Ckts	Material No	Engineer Number	Void Ckts	Material No	Engineer Number	Void Ckts
26-50-3030	A-41671-A03A102-2	2	26-50-3073	A-41671-A07A102-3	3	26-50-3202	A-41671-A20A102-51	2,4,6,8 10,12,14,16
26-50-3040	A-41671-A04A102-2	2	26-50-5080	A-41671-A08A102-51	2,4	26-50-3167	A-41671-A16A102-53	2,4,6,8
26-50-3050	A-41671-A05A102-2	2	26-50-3063	A-41671-A06A102-3	3	26-50-3152	A-41671-A15A102-52	4,6,8,10,12,14
26-50-3060	A-41671-A06A102-2	2	26-50-3071	A-41671-A07A102-52	2,4,6	26-50-3126	A-41671-A12A102-53	2,3,5,6,8,10
26-50-3070	A-41671-A07A102-2	2	26-50-3051	A-41671-A05A102-51	2,4	26-50-3240	A-41671-A24A102-2	2
26-50-3080	A-41671-A08A102-2	2	26-50-3062	A-41671-A06A102-4	4	26-50-5090	A-41671-A10A102-55	2,5
26-50-3090	A-41671-A09A102-2	2	26-50-3068	A-41671-A06A102-6	6	41671-3100	A-41671-A05A102-3	3
26-50-3100	A-41671-A10A102-2	2	26-50-3111	A-41671-A11A102-51	5,10	41671-3112	A-41671-A14A102-12	12
26-50-3110	A-41671-A11A102-2	2	26-50-3065	A-41671-A06A102-5	5	41671-3113	A-41671-A14A102-51	11, 12
26-50-3120	A-41671-A12A102-2	2	26-50-3054	A-41671-A05A102-4	4	41671-3446	A-41671-A06A102-55	1, 3, 5
26-50-3130	A-41671-A13A102-2	2	26-50-3154	A-41671-A15A102-4	4			
26-50-3140	A-41671-A14A102-2	2	26-50-3145	A-41671-A14A102-55	2,4,8,12			
26-50-3150	A-41671-A15A102-2	2	26-50-3155	A-41671-A15A102-54	3,10,13			
26-50-3160	A-41671-A16A102-2	2	26-50-3066	A-41671-A6A102-54	2,4			
26-50-3170	A-41671-A17A102-2	2	26-50-3108	A-41671-A10A102-53	3,10			
26-50-3180	A-41671-A18A102-2	2	26-50-3103	A-41671-A10A102-7	7			
26-50-3190	A-41671-A19A102-2	2	26-50-3087	A-41671-A8A102-52	5,7			
26-50-3200	A-41671-A20A102-2	2	26-50-5081	A-41671-A08A102-6	6			
26-50-3210	A-41671-A21A102-2	2	26-50-3132	A-41671-A13A102-5	5			
26-50-3220	A-41671-A22A102-2	2	26-50-3165	A-41671-A16A102-52	2,15			
26-50-3230	A-41671-A23A102-2	2	41671-0085	A-41671-A10A102-56	5,8			

REV: <b>AH8</b>	ECR/ECN INFORMATION: EC. NO. <b>UCP2008-3117</b> DATE: <b>7/1/2008</b>	TITLE: <b>KK .156 HEADER ASSEMBLY FRICTION LOCK STRAIGHT 2-24 CKTS.</b>	SHEET No. <b>- 6 -</b>
DOCUMENT NUMBER: <b>SD - 41671 - 001</b>	CREATED / REVISED BY: <b>GAVERRILL</b>	CHECKED BY: <b>AELHAG</b>	APPROVED BY: <b>FSMITH</b>

TEMPLATE FILENAME: PRODUCT\_SPEC [SIZE\_A](V.1). DOC



Group No:	A-41671-ANA503-* REF SEE SHT 3		Group No:	A-41671-AND102-* REF SEE SHT 3		Group No:	A-41671-ANB122-*	
Pin No:			Pin No:			Pin No:	2161-1 (122)	
Plating:			Plating:			Plating:	122 TIN	
Pin Length L			Pin Length L			Pin Length L	.750 / 19.05	
Mating M			Mating M			Mating M	.517 +/- .020 13.13 +/- 0.51	
Gold Loc G			Gold Loc G			Gold Loc G	NA	
PC Tail P			PC Tail P			PC Tail P	.105 +/- .020 2.67 +/- 0.51	
Tin Loc T			Tin Loc T			Tin Loc T	OVERALL	
Voided Ckts	SEE CHART BELOW		Voided Ckts	SEE CHART BELOW		Voided Ckts	SEE CHART BELOW	
Pack Per			Pack Per			Pack Per	PK-41671-001	
Material No	Engineer Number	Void Ckts	Material No	Engineer Number	Void Ckts	Material No	Engineer Number	Void Ckts
26-49-7054	A-41671-A5A503-2	2	26-49-6110	A-41671-A11D102-8	8	50-36-1877	A-41671-A16B122-51	2,5,7,9,10,11 13,14

<u>REV:</u> <b>AH8</b>	<u>ECR/ECN INFORMATION:</u> EC. NO. <b>UCP2008-3117</b> DATE: <b>7/1/2008</b>	<u>TITLE:</u> <b>KK .156 HEADER ASSEMBLY FRICTION LOCK STRAIGHT 2-24 CKTS.</b>	<u>SHEET No.</u> <b>- 7 -</b>
<u>DOCUMENT NUMBER:</u> <b>SD - 41671 - 001</b>	<u>CREATED / REVISED BY:</u> <b>GAVERRILL</b>	<u>CHECKED BY:</u> <b>AELHAG</b>	<u>APPROVED BY:</u> <b>FSMITH</b>
<small>TEMPLATE FILENAME: PRODUCT_SPEC [SIZE_A](V.1). DOC</small>			

Group No:	A-41671-ANA224	
Pin No:	2161-1(224)	
Plating:	224 Tin	
Pin Length L	.750/19.05	
Mating M	.450/11.43	
Gold Loc G	N/A	
PC Tail P	.172/4.37	
Tin Loc T	OVERALL	
Voided Ckts	NONE	
Pack Per	PK-41671-001	
Ckts	Material No	Engineer Number
5	50-36-2287	A-41671-A05A224

<u>REV:</u> <b>AH8</b>	<u>ECR/ECN INFORMATION:</u> <b>EC. NO. UCP2008-3117</b> <b>DATE: 7/1/2008</b>	<u>TITLE:</u> <b>KK .156 HEADER ASSEMBLY FRICTION LOCK STRAIGHT 2-24 CKTS.</b>	<u>SHEET No.</u> <b>- 8 -</b>
<u>DOCUMENT NUMBER:</u> <b>SD - 41671 - 001</b>	<u>CREATED / REVISED BY:</u> <b>GAVERRILL</b>	<u>CHECKED BY:</u> <b>AELHAG</b>	<u>APPROVED BY:</u> <b>FSMITH</b>

TEMPLATE FILENAME: PRODUCT\_SPEC [SIZE\_A](V.1). DOC