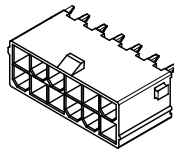
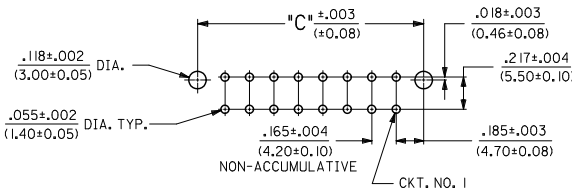
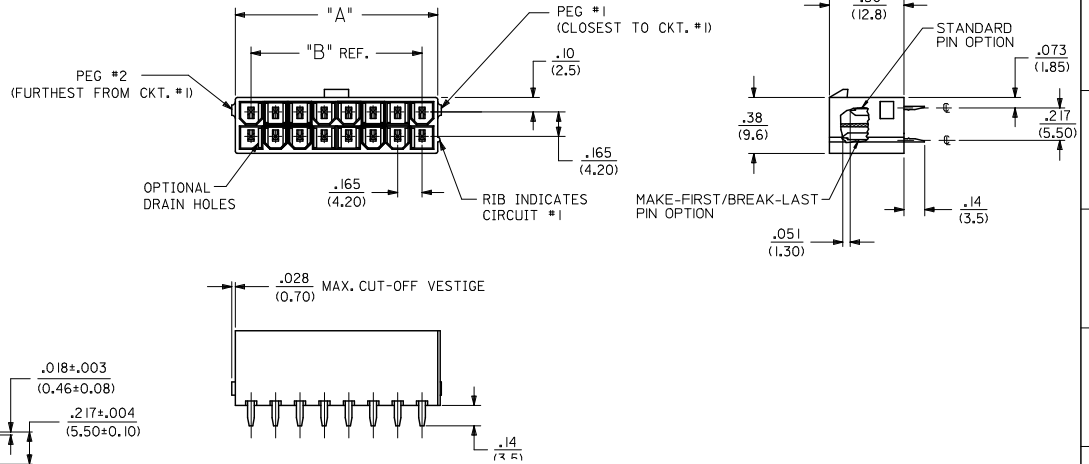


CIRCUIT SIZE	DIM. 'A'	DIM. 'B'	DIM. 'C'
2	.21 (5,4)	—	.370 (9,40)
4	.38 (9,6)	.17 (4,2)	.535 (13,60)
6	.54 (13,8)	.33 (8,4)	.701 (17,80)
8	.71 (18,0)	.50 (12,6)	.866 (22,00)
10	.87 (22,2)	.66 (16,8)	1.031 (26,20)
12	1.04 (26,4)	.83 (21,0)	1.197 (30,40)
14	1.20 (30,6)	.99 (25,2)	1.362 (34,60)
16	1.37 (34,8)	1.16 (29,4)	1.528 (38,80)
18	1.54 (39,0)	1.32 (33,6)	1.693 (43,00)
20	1.70 (43,2)	1.49 (37,8)	1.858 (47,20)
22	1.87 (47,4)	1.65 (42,0)	2.024 (51,40)
24	2.03 (51,6)	1.82 (46,2)	2.189 (55,60)



12 CKT SHOWN

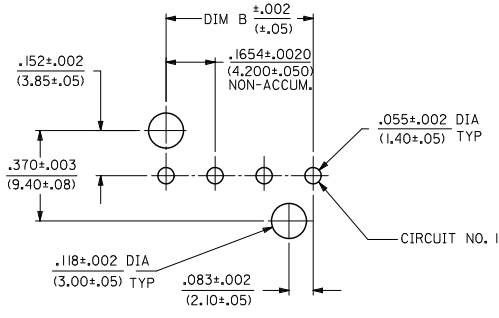
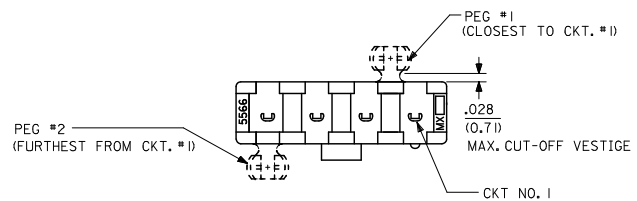
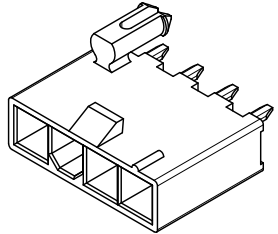
- NOTES:
- MATERIALS:  
HOUSING MATERIAL AND OPTIONS: SEE CHART  
TERMINALS: BRASS
  - TERMINAL PLATING:  
A = .000035/(0.00089) MIN. BRIGHT TIN OVER  
.000020/(0.00051) MIN. COPPER OVERALL  
B = .000030/(0.00076) MIN. SELECT GOLD AND  
.000100/(0.00254) MIN. MATTE TIN OVER  
.000050/(0.00127) MIN. NICKEL OVERALL  
C = .000100/(0.00254) MIN. BRIGHT TIN OVER  
.000050/(0.00127) MIN. NICKEL OVERALL
  - PRODUCT SPECIFICATION: PS-5556-001
  - PACKAGING: SEE CHART.
  - PART MATES WITH MINI-FIT JR. RECEPTACLE #5557.
  - PARTS ARE NOT DESIGNED FOR CURRENT SHARING.
  - CONNECTOR ASSEMBLIES ARE NOT DESIGNED TO BE MATED OR UNMATED WHILE CIRCUITS ARE LIVE.
  - LOCATION OF .118±.002/(3.00±0.05) DIAMETER HOLES ON P.C. BOARD IS FOR OPTIONAL PEGS.
  - PART CONFORMS TO CLASS 'B' REQUIREMENTS OF COSMETIC SPECIFICATION PS-45499-002 EXCEPT IN AREA OF PEG CUT-OFF.



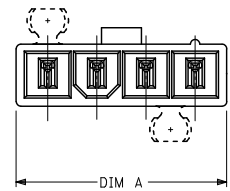
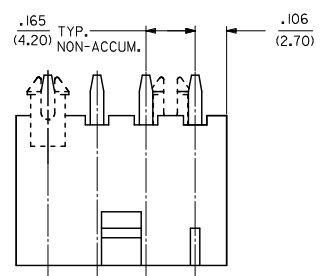
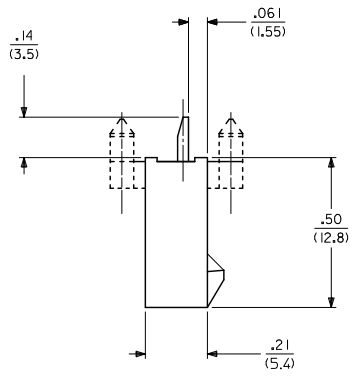
SEE SHEET 2 FOR SINGLE ROW PRODUCT

ADD -0024 EC NO. UCP2011-3352 DRAWN: JAGUILAR 2011/04/28 CHKD: JEBELL 2011/04/28 APPR: FSMITH 2011/05/02	QUALITY SYMBOLS ▽=0 ▽=0 ▽=0	GENERAL TOLERANCES (UNLESS SPECIFIED)	DIMENSION STYLE		SCALE 2:1	DESIGN UNITS METRIC	THIRD ANGLE PROJECTION
			mm	INCH			
D13	DESCRIPTION	4 PLACES ±.010 ±.010	DRAWN BY AFG	DATE 1995/07/19	TITLE	2-24 CKT VERT HDR ASSY W/PEGS REMOVED OPTION W/WO DRAIN HOLE MINI-FIT	MOLEX INCORPORATED
		3 PLACES ±.025 ±.014	CHECKED BY RJF	DATE 1995/07/19			
		1 PLACE ±0.36 ±.010	APPROVED BY FSMITH	DATE 2010/03/08			
		ANGULAR ±1/2°	MATERIAL NO.	DOCUMENT NO.			
		DRAFT WHERE APPLICABLE MUST REMAIN WITHIN DIMENSIONS	SEE SHEET 3	SDA-43588-****			SHEET NO. 1 OF 4
			SIZE C	THIS DRAWING CONTAINS INFORMATION THAT IS PROPRIETARY TO MOLEX INCORPORATED AND SHOULD NOT BE USED WITHOUT WRITTEN PERMISSION			

CKT SIZE	DIM A	DIM B
4	.709 (18.00)	.496 (12.60)
5	.874 (22.20)	.661 (16.80)
6	1.039 (26.40)	.827 (21.00)
7	1.205 (30.60)	.992 (25.20)
8	1.370 (34.80)	1.157 (29.40)
9	1.535 (39.00)	1.323 (33.60)
10	1.701 (43.20)	1.488 (37.80)
11	1.866 (47.40)	1.654 (42.00)
12	2.031 (51.60)	1.819 (46.20)



RECOMMENDED HOLE LAYOUT FOR  
.070/(1.78) MAX. THICK P. C. BOARD  
VIEWED FROM COMPONENT SIDE  
(SEE NOTE B)



SEE SHEET 1 FOR DUAL ROW PRODUCT

SEE SHEET 1 EC. NO. UCP2011-3352 DRAWN: JAGUILAR 2011/04/28 CHKD: BELL 2011/04/28 APPR: SMITH 2011/05/02	QUALITY SYMBOLS 	GENERAL TOLERANCES (UNLESS SPECIFIED)		DIMENSION STYLE	SCALE	DESIGN UNITS	THIRD ANGLE PROJECTION	
				IN/MM	2:1	METRIC		
				mm	INCH			
				4 PLACES ±.010 ±.010	3 PLACES ±.010 ±.010	2 PLACES ±.025 ±.014	1 PLACE ±.036 ±.014	ANGULAR ±1/2°
DRAWING DESCRIPTION		DRAFT WHERE APPLICABLE MUST REMAIN WITHIN DIMENSIONS		MATERIAL NO. SEE SHEET 3		DOCUMENT NO. SDA-43588-****		
REV		SIZE		THIS DRAWING CONTAINS INFORMATION THAT IS PROPRIETARY TO MOLEX INCORPORATED AND SHOULD NOT BE USED WITHOUT WRITTEN PERMISSION				



ITEM NO.	CKTS	MATERIAL	HOUSING TYPE	DRAIN HOLES	PEG 1	PEG 2	PLATING PER NOTE 2	TERMINAL VERSION REQUIRED AT EACH CIRCUIT LOCATION: V = VOID																								PACKAGING	
								1	2	3	4	5	6	7	8	9	10	11	12	13	14	15	16	17	18	19	20	21	22	23	24		
43588-0024	06	94V-0	DUAL ROW	NO	NONE	NONE	C	4	V	4	4	V	4	-	-	-	-	-	-	-	-	-	-	-	-	-	-	-	-	-	-	-	PK-5566-001

TERMINAL CODES		
TERMINAL TYPE	PLATING SEE NOTE 2	MATERIAL
1 - STANDARD	A	BRASS
2 - MF/BL	A	BRASS
3 - STANDARD	B	BRASS
4 - STANDARD	C	BRASS
5 - MF/BL	C	BRASS

**SEE SHEET 1**  
 DEC NO: UCP2011-3352  
 DRAWN: JAGUILAR 2011/04/28  
 CHKD: BELL 2011/04/28  
 APPR: SMITH 2011/05/02

**QUALITY SYMBOLS**

**GENERAL TOLERANCES (UNLESS SPECIFIED)**

	mm	INCH
4 PLACES	±.005	±.0004
3 PLACES	±.010	±.0008
2 PLACES	±0.25	±.010
1 PLACE	±0.36	±.014
ANGULAR ±1/2°		

**DIMENSION STYLE**  
IN/MM

DRAWN BY	DATE	TITLE
AFG	1995/07/19	2-24 CKT VERT HDR ASSY W/PEGS REMOVED OPTION W/NO DRAIN HOLE MINI-FIT
CHECKED BY	DATE	
RJF	1995/07/19	
APPROVED BY	DATE	
FSMITH	2010/03/08	

**SCALE** 1:1

**DESIGN UNITS** METRIC

**THIRD ANGLE PROJECTION**

**MATERIAL NO.** SEE CHART

**DOCUMENT NO.** SDA-43588-\*\*\*\*

**SHEET NO.** 4 OF 4

**THIS DRAWING CONTAINS INFORMATION THAT IS PROPRIETARY TO MOLEX INCORPORATED AND SHOULD NOT BE USED WITHOUT WRITTEN PERMISSION**