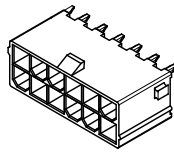
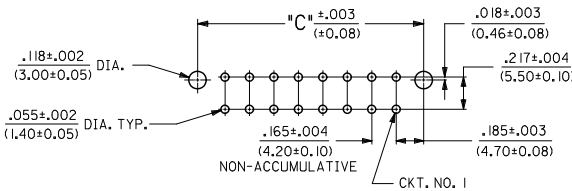
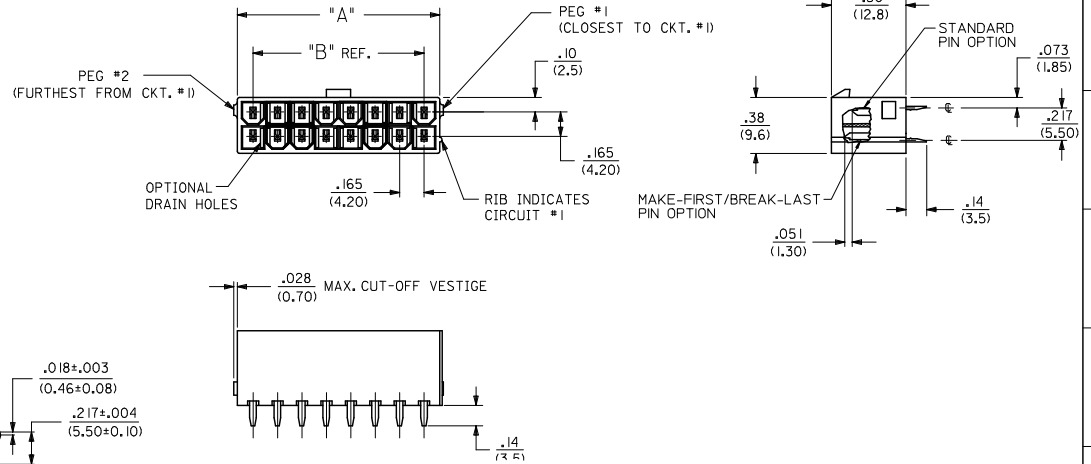


| CIRCUIT SIZE | DIM. 'A'       | DIM. 'B'       | DIM. 'C'         |
|--------------|----------------|----------------|------------------|
| 2            | .21<br>(5,4)   | —              | .370<br>(9,40)   |
| 4            | .38<br>(9,6)   | .17<br>(4,2)   | .535<br>(13,60)  |
| 6            | .54<br>(13,8)  | .33<br>(8,4)   | .701<br>(17,80)  |
| 8            | .71<br>(18,0)  | .50<br>(12,6)  | .866<br>(22,00)  |
| 10           | .87<br>(22,2)  | .66<br>(16,8)  | 1.031<br>(26,20) |
| 12           | 1.04<br>(26,4) | .83<br>(21,0)  | 1.197<br>(30,40) |
| 14           | 1.20<br>(30,6) | .99<br>(25,2)  | 1.362<br>(34,60) |
| 16           | 1.37<br>(34,8) | 1.16<br>(29,4) | 1.528<br>(38,80) |
| 18           | 1.54<br>(39,0) | 1.32<br>(33,6) | 1.693<br>(43,00) |
| 20           | 1.70<br>(43,2) | 1.49<br>(37,8) | 1.858<br>(47,20) |
| 22           | 1.87<br>(47,4) | 1.65<br>(42,0) | 2.024<br>(51,40) |
| 24           | 2.03<br>(51,6) | 1.82<br>(46,2) | 2.189<br>(55,60) |



12 CKT SHOWN

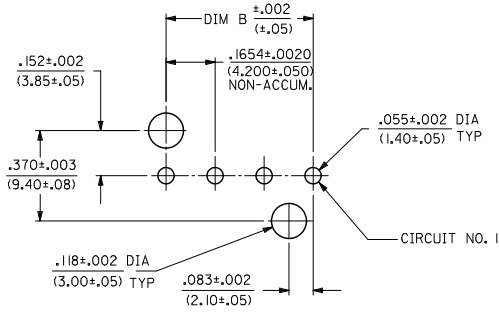
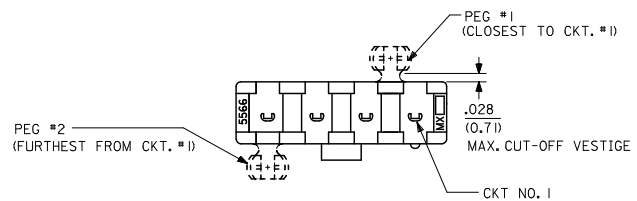
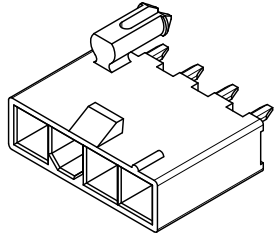
- NOTES:
- MATERIALS:  
HOUSING MATERIAL AND OPTIONS: SEE CHART  
TERMINALS: BRASS
  - TERMINAL PLATING:  
A = .000035/(0.00089) MIN. BRIGHT TIN OVER  
.000020/(0.00051) MIN. COPPER OVERALL  
B = .000030/(0.00076) MIN. SELECT GOLD AND  
.000100/(0.00254) MIN. MATTE TIN OVER  
.000050/(0.00127) MIN. NICKEL OVERALL  
C = .000100/(0.00254) MIN. BRIGHT TIN OVER  
.000050/(0.00127) MIN. NICKEL OVERALL
  - PRODUCT SPECIFICATION: PS-5556-001
  - PACKAGING: SEE CHART.
  - PART MATES WITH MINI-FIT JR. RECEPTACLE #5557.
  - PARTS ARE NOT DESIGNED FOR CURRENT SHARING.
  - CONNECTOR ASSEMBLIES ARE NOT DESIGNED TO BE MATED OR UNMATED WHILE CIRCUITS ARE LIVE.
  - LOCATION OF .118±.002/(3.00±0.05) DIAMETER HOLES ON P.C. BOARD IS FOR OPTIONAL PEGS.
  - PART CONFORMS TO CLASS 'B' REQUIREMENTS OF COSMETIC SPECIFICATION PS-45499-002 EXCEPT IN AREA OF PEG CUT-OFF.



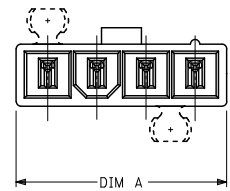
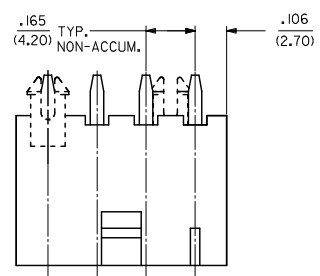
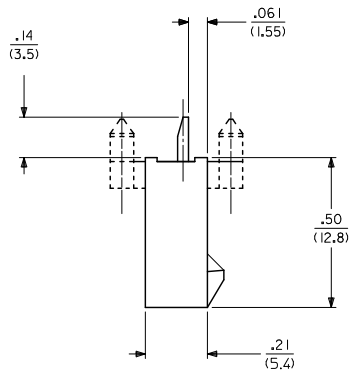
SEE SHEET 2 FOR SINGLE ROW PRODUCT

|   |                                      |  |   |      |                |                     |                        |
|---|--------------------------------------|--|---|------|----------------|---------------------|------------------------|
| ADD -0024<br>EC NO. UCP2011-3352<br>DRAWN: JAGUILAR 2011/04/28<br>CHKD: BELL 2011/04/28<br>APPR: SMITH 2011/05/02 | QUALITY SYMBOLS<br>▽=0<br>▽=0<br>▽=0 | GENERAL TOLERANCES (UNLESS SPECIFIED)                | DIMENSION STYLE   |      | SCALE 2:1      | DESIGN UNITS METRIC | THIRD ANGLE PROJECTION |
|   |                                      |  | mm  | INCH |                |                     |                        |
| D13   | DESCRIPTION                          | 4 PLACES ±.010 ±.010                                 | DRAWN BY AFG DATE 1995/07/19  |      | TITLE          | MOLEX INCORPORATED  | SHEET NO. 1 OF 4       |
|   |                                      | 3 PLACES ±.025 ±.014                                 | CHECKED BY RJF DATE 1995/07/19  |      |                |                     |                        |
|   |                                      | 2 PLACES ±0.36 ±.014                                 | APPROVED BY FSMT TH DATE 2010/03/08   |      |                |                     |                        |
|   |                                      | 1 PLACE ±0.36 ±.014                                  | MATERIAL NO.  |      | DOCUMENT NO.   |                     |                        |
|   |                                      | ANGULAR ±1/2°  | SEE SHEET 3   |      | SDA-43588-**** |                     |                        |
|   |                                      | DRAFT WHERE APPLICABLE MUST REMAIN WITHIN DIMENSIONS | THIS DRAWING CONTAINS INFORMATION THAT IS PROPRIETARY TO MOLEX INCORPORATED AND SHOULD NOT BE USED WITHOUT WRITTEN PERMISSION |      |                |                     |                        |

| CKT SIZE | DIM A            | DIM B            |
|----------|------------------|------------------|
| 4        | .709<br>(18.00)  | .496<br>(12.60)  |
| 5        | .874<br>(22.20)  | .661<br>(16.80)  |
| 6        | 1.039<br>(26.40) | .827<br>(21.00)  |
| 7        | 1.205<br>(30.60) | .992<br>(25.20)  |
| 8        | 1.370<br>(34.80) | 1.157<br>(29.40) |
| 9        | 1.535<br>(39.00) | 1.323<br>(33.60) |
| 10       | 1.701<br>(43.20) | 1.488<br>(37.80) |
| 11       | 1.866<br>(47.40) | 1.654<br>(42.00) |
| 12       | 2.031<br>(51.60) | 1.819<br>(46.20) |



RECOMMENDED HOLE LAYOUT FOR  
.070/(1.78) MAX. THICK P. C. BOARD  
VIEWED FROM THICK SIDE  
(SEE NOTE B)



SEE SHEET 1 FOR DUAL ROW PRODUCT

|   |                     |                                       |            |                          |            |                        |                        |  |
|---|---------------------|---------------------------------------|------------|--------------------------|------------|------------------------|------------------------|--|
| SEE SHEET 1<br>EC. NO. UEP2011-3352<br>DRAWN: JAGUILAR 2011/04/28<br>CHKD: BELL 2011/04/28<br>APPR: SMITH 2011/05/02          | QUALITY SYMBOLS<br> | GENERAL TOLERANCES (UNLESS SPECIFIED) |            | DIMENSION STYLE          | SCALE      | DESIGN UNITS           | THIRD ANGLE PROJECTION |  |
|   |                     | mm                                    | INCH       | IN/MM                    | 2:1        | METRIC                 |                        |  |
|   |                     | 4 PLACES ±.010                        | ±.010      | DRAWN BY                 | DATE       | TITLE                  |                        |  |
|   |                     | 3 PLACES ±.010                        | ±.010      | AFG                      | 1995/07/19 | 2-24 CKT VERT HDR ASSY |                        |  |
| 2 PLACES ±0.25  | ±.014               | RJF                                   | 1995/07/19 | W/W PEGS REMOVED OPTION  |            |                        |                        |  |
| 1 PLACE ±0.36   | ±.014               | APPROVED BY                           | DATE       | W/WO DRAIN HOLE MINI-FIT |            |                        |                        |  |
|   | ANGULAR ±1/2°       | FSMITH                                | 2010/03/08 | MOLEX INCORPORATED       |            |                        |                        |  |
| DRAFT WHERE APPLICABLE MUST REMAIN WITHIN DIMENSIONS  |                     | SEE SHEET 3                           |            | MATERIAL NO.             |            | DOCUMENT NO.           | SHEET NO.              |  |
|   |                     |                                       |            | SDA-43588-****           |            | 2 OF 4                 |                        |  |
| THIS DRAWING CONTAINS INFORMATION THAT IS PROPRIETARY TO MOLEX INCORPORATED AND SHOULD NOT BE USED WITHOUT WRITTEN PERMISSION |                     |                                       |            |                          |            |                        |                        |  |



