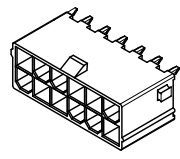
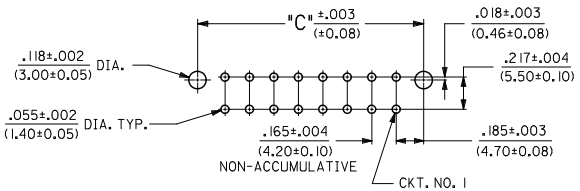
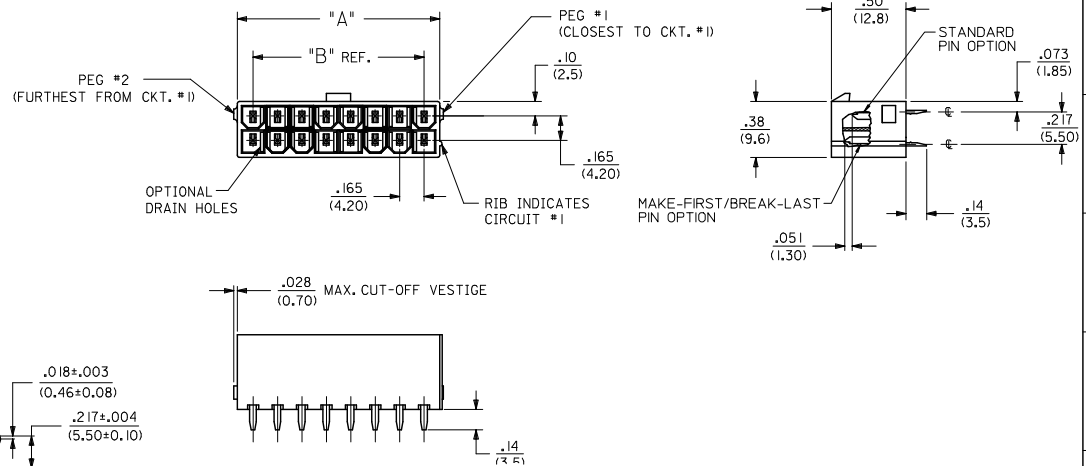


CIRCUIT SIZE	DIM. 'A'	DIM. 'B'	DIM. 'C'
2	.21 (5.4)	—	.370 (9.40)
4	.38 (9.6)	.17 (4.2)	.535 (13.60)
6	.54 (13.8)	.33 (8.4)	.701 (17.80)
8	.71 (18.0)	.50 (12.6)	.866 (22.00)
10	.87 (22.2)	.66 (16.8)	1.031 (26.20)
12	1.04 (26.4)	.83 (21.0)	1.197 (30.40)
14	1.20 (30.6)	.99 (25.2)	1.362 (34.60)
16	1.37 (34.8)	1.16 (29.4)	1.528 (38.80)
18	1.54 (39.0)	1.32 (33.6)	1.693 (43.00)
20	1.70 (43.2)	1.49 (37.8)	1.858 (47.20)
22	1.87 (47.4)	1.65 (42.0)	2.024 (51.40)
24	2.03 (51.6)	1.82 (46.2)	2.189 (55.60)



12 CKT SHOWN

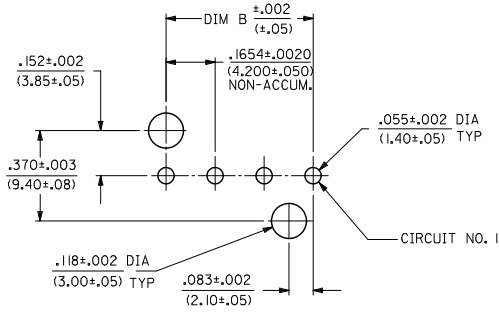
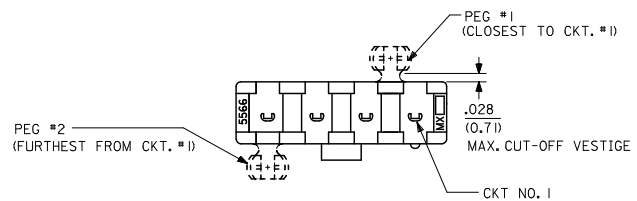
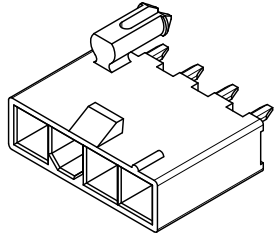
- NOTES:
- MATERIALS:
HOUSING MATERIAL AND OPTIONS: SEE CHART
TERMINALS: BRASS
 - TERMINAL PLATING:
A = .000035/(0.00089) MIN. BRIGHT TIN OVER
.000020/(0.00051) MIN. COPPER OVERALL
B = .000030/(0.00076) MIN. SELECT GOLD AND
.000100/(0.00254) MIN. MATTE TIN OVER
.000050/(0.00127) MIN. NICKEL OVERALL
C = .000100/(0.00254) MIN. BRIGHT TIN OVER
.000050/(0.00127) MIN. NICKEL OVERALL
 - PRODUCT SPECIFICATION: PS-5556-001
 - PACKAGING: SEE CHART.
 - PART MATES WITH MINI-FIT JR. RECEPTACLE #5557.
 - PARTS ARE NOT DESIGNED FOR CURRENT SHARING.
 - CONNECTOR ASSEMBLIES ARE NOT DESIGNED TO BE MATED OR UNMATED WHILE CIRCUITS ARE LIVE.
 - LOCATION OF .118±.002/(3.00±0.05) DIAMETER HOLES ON P.C. BOARD IS FOR OPTIONAL PEGS.
 - PART CONFORMS TO CLASS 'B' REQUIREMENTS OF COSMETIC SPECIFICATION PS-45499-002 EXCEPT IN AREA OF PEG CUT-OFF.



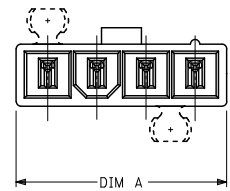
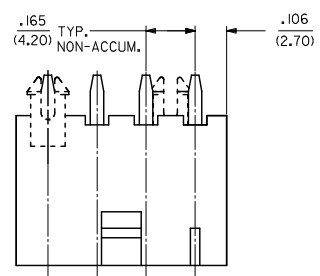
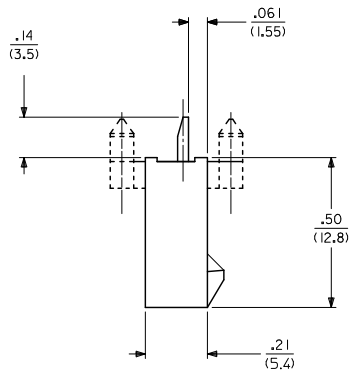
ADD -0024	EC NO. UCP2011-3352	DRAWN/JAGUILAR 2011/04/28	CHKD/JBELL 2011/04/28	APPR/SMITH 2011/05/02	QUALITY SYMBOLS	GENERAL TOLERANCES (UNLESS SPECIFIED)		DIMENSION STYLE		SCALE 2:1	DESIGN UNITS METRIC	THIRD ANGLE PROJECTION
						mm	INCH	IN/MM	IN/MM			
						4 PLACES ±.010	±.010	DRAWN BY AFG	DATE 1995/07/19	TITLE 2-24 CKT VERT HDR ASSY W/PEGS REMOVED OPTION W/WO DRAIN HOLE MINI-FIT		
						3 PLACES ±.025	±.014	CHECKED BY RJF	DATE 1995/07/19	MOLEX INCORPORATED		
						2 PLACES ±0.36	±.014	APPROVED BY FSM/TH	DATE 2010/03/08	DOCUMENT NO. SDA-43588-**** SHEET NO. 1 OF 4		
						1 PLACE ±0.36	±.014	MATERIAL NO. SEE SHEET 3		THIS DRAWING CONTAINS INFORMATION THAT IS PROPRIETARY TO MOLEX INCORPORATED AND SHOULD NOT BE USED WITHOUT WRITTEN PERMISSION		
						ANGULAR ±1/2°		DRAFT WHERE APPLICABLE MUST REMAIN WITHIN DIMENSIONS				

SEE SHEET 2 FOR SINGLE ROW PRODUCT

CKT SIZE	DIM A	DIM B
4	.709 (18.00)	.496 (12.60)
5	.874 (22.20)	.661 (16.80)
6	1.039 (26.40)	.827 (21.00)
7	1.205 (30.60)	.992 (25.20)
8	1.370 (34.80)	1.157 (29.40)
9	1.535 (39.00)	1.323 (33.60)
10	1.701 (43.20)	1.488 (37.80)
11	1.866 (47.40)	1.654 (42.00)
12	2.031 (51.60)	1.819 (46.20)



RECOMMENDED HOLE LAYOUT FOR
.070/(1.78) MAX. THICK P. C. BOARD
VIEWED FROM THICK SIDE
(SEE NOTE B)



SEE SHEET 1 FOR DUAL ROW PRODUCT

SEE SHEET 1 EC. NO. UEP2011-3352 DRAWN: JAGUILAR 2011/04/28 CHKD: BELL 2011/04/28 APPR: SMITH 2011/05/02	QUALITY SYMBOLS 	GENERAL TOLERANCES (UNLESS SPECIFIED)		DIMENSION STYLE	SCALE	DESIGN UNITS	THIRD ANGLE PROJECTION	
				IN/MM	2:1	METRIC		
				mm	INCH			
				4 PLACES ±.010 ±.010	3 PLACES ±.010 ±.010	2 PLACES ±.025 ±.014	1 PLACE ±.036 ±.014	ANGULAR ±1/2°
DRAFT WHERE APPLICABLE MUST REMAIN WITHIN DIMENSIONS		MATERIAL NO. SEE SHEET 3		DRAWN BY: AFG DATE: 1995/07/19 CHECKED BY: RJF DATE: 1995/07/19 APPROVED BY: FSMITH DATE: 2010/03/08		TITLE: 2-24 CKT VERT HDR ASSY W/PEGS REMOVED OPTION W/WO DRAIN HOLE MINI-FIT MOLEX INCORPORATED		
REV: D13		SIZE: C		DOCUMENT NO. SDA-43588-****		SHEET NO. 2 OF 4		

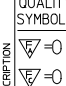
	13	12	11	10	9	8	7	6	5	4	3	2	1																					
	ITEM NO.	CKTS	MATERIAL	HOUSING TYPE	DRAIN HOLES	PEG 1	PEG 2	PLATING PER NOTE 2	TERMINAL VERSION REQUIRED AT EACH CIRCUIT LOCATION: V = VOID																PACKAGING									
									1	2	3	4	5	6	7	8	9	10	11	12	13	14	15	16	17	18	19	20	21	22	23	24		
J	43588-2001	20	94V-2	DUAL ROW	YES	WITH	REMOVED	A	1	1	1	1	1	1	1	1	1	1	1	1	1	1	1	1	1	1	1	1	-	-	-	-	BULK	
	43588-2002	20	94V-2	DUAL ROW	YES	WITH	REMOVED	C	5	5	5	5	5	5	5	5	5	5	5	4	4	4	4	4	4	4	4	4	-	-	-	-	BULK	
	43588-2003	20	94V-2	DUAL ROW	YES	REMOVED	WITH	A	1	1	1	1	1	1	1	1	1	1	1	1	1	1	1	1	1	1	V	1	-	-	-	-	BULK	
I	43588-1804	18	94V-0	DUAL ROW	YES	WITH	REMOVED	A	1	1	1	1	1	1	1	1	1	1	1	1	1	1	1	1	1	1	-	-	-	-	-	-	BULK	
	43588-2405	24	94V-0	DUAL ROW	YES	REMOVED	WITH	C	4	4	4	4	4	4	4	4	4	4	4	4	4	4	4	4	4	4	4	4	4	4	4	4	BULK	
	43588-1806	18	94V-2	DUAL ROW	NO	REMOVED	WITH	A	1	1	1	1	1	1	1	1	1	1	1	1	1	1	1	1	1	1	-	-	-	-	-	-	BULK	
H	43588-2007	20	94V-2	DUAL ROW	NO	REMOVED	WITH	A	1	1	1	1	1	1	1	1	1	1	1	1	1	1	1	1	1	1	1	-	-	-	-	-	-	BULK
	43588-0408	04	94V-2	DUAL ROW	YES	REMOVED	WITH	C	4	4	4	4	-	-	-	-	-	-	-	-	-	-	-	-	-	-	-	-	-	-	-	-	BULK	
	43588-0009	05	94V-0	SINGLE ROW	NO	REMOVED	REMOVED	B	3	3	3	3	3	-	-	-	-	-	-	-	-	-	-	-	-	-	-	-	-	-	-	-	BULK	
G	43588-0010	04	94V-2	DUAL ROW	YES	WITH	REMOVED	A	1	1	1	1	-	-	-	-	-	-	-	-	-	-	-	-	-	-	-	-	-	-	-	-	BULK	
	43588-0011	04	94V-2	SINGLE ROW	YES	WITH	WITH	C	4	V	V	4	-	-	-	-	-	-	-	-	-	-	-	-	-	-	-	-	-	-	-	-	PK-5566-002	
	43588-0012	05	94V-0	SINGLE ROW	NO	WITH	WITH	C	4	V	V	V	4	-	-	-	-	-	-	-	-	-	-	-	-	-	-	-	-	-	-	-	BULK	
F	43588-0013	05	94V-0	SINGLE ROW	NO	WITH	WITH	C	4	V	V	4	V	-	-	-	-	-	-	-	-	-	-	-	-	-	-	-	-	-	-	-	BULK	
	43588-0014	20	94V-0	DUAL ROW	YES	WITH	REMOVED	A	1	1	1	1	1	1	1	1	1	1	1	1	1	1	1	1	1	1	1	1	-	-	-	-	-	BULK
	43588-0015	05	94V-0	SINGLE ROW	NO	WITH	WITH	A	1	V	1	V	1	-	-	-	-	-	-	-	-	-	-	-	-	-	-	-	-	-	-	-	-	BULK
	43588-0016	24	94V-0	DUAL ROW	YES	REMOVED	REMOVED	A	1	1	1	1	1	1	1	1	1	1	1	1	1	1	1	1	1	1	1	V	1	1	1	1	BULK	
E	43588-0017	04	94V-0	SINGLE ROW	YES	REMOVED	WITH	C	4	V	V	4	-	-	-	-	-	-	-	-	-	-	-	-	-	-	-	-	-	-	-	-	-	BULK
	43588-0018	04	94V-0	SINGLE ROW	YES	WITH	WITH	C	4	5	5	4	-	-	-	-	-	-	-	-	-	-	-	-	-	-	-	-	-	-	-	-	BULK	
	43588-0019	10	94V-2	DUAL ROW	NO	NONE	NONE	C	4	4	4	4	4	4	V	4	4	4	4	-	-	-	-	-	-	-	-	-	-	-	-	-	-	BULK
D	43588-0020	06	94V-2	DUAL ROW	NO	NONE	NONE	C	4	V	4	4	V	4	-	-	-	-	-	-	-	-	-	-	-	-	-	-	-	-	-	-	-	BULK
	43588-0021	14	94V-0	DUAL ROW	NO	NONE	NONE	B	3	3	3	3	3	3	3	3	3	3	3	3	3	3	3	3	3	3	3	-	-	-	-	-	-	BULK
	43588-0022	24	94V-0	DUAL ROW	NO	WITH	REMOVED	C	4	4	4	4	4	4	4	4	4	4	4	4	4	4	4	4	4	4	4	4	4	4	4	4	4	PK-5566-001
C	43588-0023	05	94V-0	SINGLE ROW	NO	REMOVED	REMOVED	C	4	4	4	4	4	-	-	-	-	-	-	-	-	-	-	-	-	-	-	-	-	-	-	-	-	PK-43588-001

TERMINAL CODES		
TERMINAL TYPE	PLATING SEE NOTE 2	MATERIAL
1 - STANDARD	A	BRASS
2 - MF/BL	A	BRASS
3 - STANDARD	B	BRASS
4 - STANDARD	C	BRASS
5 - MF/BL	C	BRASS

SEE SHEET 1 DEC NO. UEP2011-3352 DRAWN: JAGUILAR 2011/04/28 CHECKED: BELL 2011/04/28 APPR: SMITH 2011/05/02 DESCRIPTION:	QUALITY SYMBOLS	GENERAL TOLERANCES (UNLESS SPECIFIED)	DIMENSION STYLE IN/MM	SCALE	DESIGN UNITS	THIRD ANGLE PROJECTION
	$\nabla = 0$ $\nabla = 0$ $\nabla = 0$	4 PLACES ± --- ± --- 3 PLACES ± --- ± .010 2 PLACES ± 0.25 ± .014 1 PLACE ± 0.36 ± --- ANGULAR ± 1/2°	mm INCH DRAWN BY DATE AFG 1995/07/19 CHECKED BY DATE RJF 1995/07/19 APPROVED BY DATE FSMITH 2010/03/08			2-24 CKT VERT HDR ASSY W/PEGS REMOVED OPTION W/NO DRAIN HOLE MINI-FIT MOLEX INCORPORATED
DRAFT WHERE APPLICABLE MUST REMAIN WITHIN DIMENSIONS		SIZE C	SEE CHART	THIS DRAWING CONTAINS INFORMATION THAT IS PROPRIETARY TO MOLEX INCORPORATED AND SHOULD NOT BE USED WITHOUT WRITTEN PERMISSION		MATERIAL NO. DOCUMENT NO. SHEET NO. SDA-43588-*** 3 OF 4

								TERMINAL VERSION REQUIRED AT EACH CIRCUIT LOCATION: V = VOID																									
ITEM NO.	CKTS	MATERIAL	HOUSING TYPE	DRAIN HOLES	PEG 1	PEG 2	PLATING PER NOTE 2	1	2	3	4	5	6	7	8	9	10	11	12	13	14	15	16	17	18	19	20	21	22	23	24	PACKAGING	
43588-0024	06	94V-0	DUAL ROW	NO	NONE	NONE	C	4	V	4	4	V	4	-	-	-	-	-	-	-	-	-	-	-	-	-	-	-	-	-	-	-	PK-5566-001

TERMINAL CODES		
TERMINAL TYPE	PLATING SEE NOTE 2	MATERIAL
1 = STANDARD	A	BRASS
2 = MF/BL	A	BRASS
3 = STANDARD	B	BRASS
4 = STANDARD	C	BRASS
5 = MF/BL	C	BRASS

SEE SHEET 1 DEC. NO. UCP2011-3352 DRAWN: JAGUILAR 2011/04/28 CHKD: BELL 2011/04/28 APPR: SMITH 2011/05/02	QUALITY SYMBOLS 	GENERAL TOLERANCES (UNLESS SPECIFIED)		DIMENSION STYLE		SCALE	DESIGN UNITS	THIRD ANGLE PROJECTION	
				IN/MM		1:1	METRIC		
		4 PLACES ±.001 ±.001		DRAWN BY DATE		TITLE			MOLEX INCORPORATED
		3 PLACES ±.002 ±.010		AFG 1995/07/19		2-24 CKT VERT HDR ASSY W/PEGS REMOVED OPTION W/WO DRAIN HOLE MINI-FIT			
2 PLACES ±0.25 ±.014		CHECKED BY DATE		APPROVED BY DATE		MATERIAL NO. DOCUMENT NO.	SHEET NO. 4 OF 4		
1 PLACE ±0.36 ±.001		RJF 1995/07/19		FSMITH 2010/03/08					
ANGULAR ±1/2°		DRAFT WHERE APPLICABLE MUST REMAIN WITHIN DIMENSIONS		SEE CHART		SDA-43588-****			
THIS DRAWING CONTAINS INFORMATION THAT IS PROPRIETARY TO MOLEX INCORPORATED AND SHOULD NOT BE USED WITHOUT WRITTEN PERMISSION									

1b_frame_C_P_AM_T Rev. F 2009/06/18