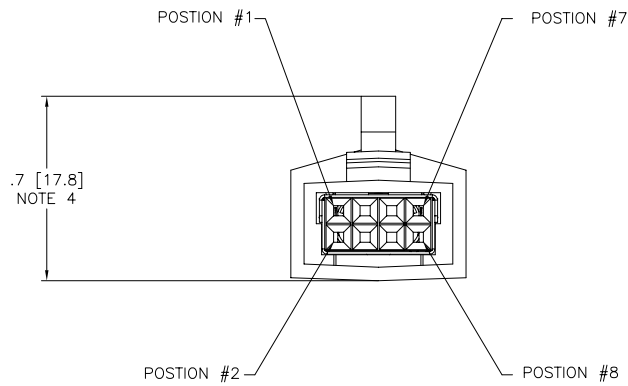
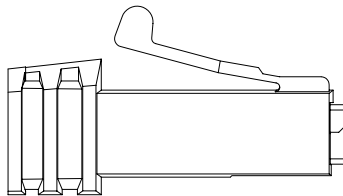
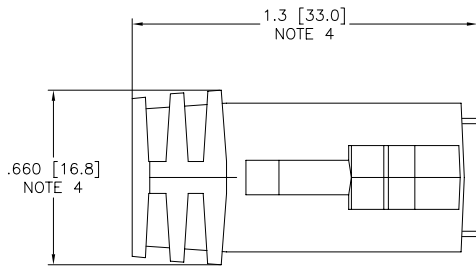


PRODUCT NO.  
SEE SHT. 2



mat'l. code		surface	tolerance	projection	product family
		ISO 1302	ISO 406 ISO 1101	ASME	LATCH-N-LOK
ltr	ecn no	dr	date	tolerances unless otherwise specified	title
A	v90622	CGC	3/4/99	angles	2X4 LNL 360° SHIELDED
B	v91818	RGD	8/12/99	linear	PLUG CONN. KIT W/O PV'S
C	v92065	RGD	11/2/99	0°±2"	scale 2:1
D	v01093	TFG	7/6/00	dr	M.HERNANDEZ 12/03/04
E	w04-0229	MHT	12/03/04	enrg	M. BARRIOS 12/03/04
F	w06-0365	AGS	9/21/06	chr	M. BARRIOS 12/03/04
				appd	M. BARRIOS 12/03/04
sheet index	revision sheet	F	F	F	
	1	2	3		
				FCJ	
				type Product Customer Drawing	
				dwg no 98028 sheet 1 of 3 size A3	

PDM: Rev:F

STATUS Released

Printed: Jul 24, 2010

98028-WXYZLF

Z key position

1	POSITION 1
2	POSITION 2
3	NO KEY

XY color


01	LT. GRAY	—	OBS
02	OFF WHITE		
03	DK. GRAY	—	OBS
04	BLACK		
05	SLATE GRAY	—	OBS
06	D. GRAY	—	OBS
07	SILVER GRAY		
08	PEARL WHITE	—	OBS
09	PEBBLE GRAY		

W cable o.d.

7	.250/6.35
8	.280/7.11

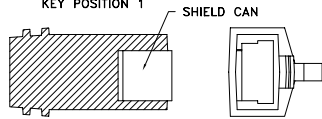
EXAMPLE

98028-7013LF: IS A 2X4 REAR EXIT PLUG IN LIGHT GRAY WITH A CABLE EXIT HOLE SIZE OF .250[6.35] CABLE RANGE, WITH NO KEYING OPTION.

mat'l. code		surface	tolerance	projection	product family
ISO 1302		ISO 1302	ISO 406	ISO 1101	LATCH-N-LOK
ltr	ecn	no	dr	date	title
F					2X4 LNL 360° SHIELDED PLUG CONN. KIT W/O PV'S
angles		linear		INCH/MM	scale 2:1
0°±2'		.XX±.01/.3		.XXX±.005/.13	
				.XXX±.0020/.051	
dr	M.HERNANDEZ		12/03/04		
enrg	M. BARRIOS		12/03/04		
chr	M. BARRIOS		12/03/04		
appd	M. BARRIOS		12/03/04		
sheet index	revision sheet				sheet 2 of 3 size A3 type Product Customer Drawing

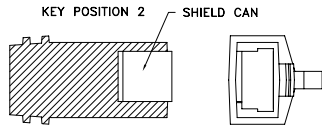
VIEWS OF BOTTOM OF PLUG

KEY POSITION 1



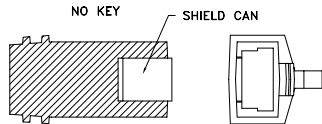
MATES WITH P/N 74355-YYY1  
MATES WITH P/N 87316-YYY1

KEY POSITION 2



MATES WITH P/N 74355-YYY2  
MATES WITH P/N 87316-YYY2

NO KEY

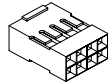


MATES WITH P/N 74355-YYY  
MATES WITH P/N 87316-YYY

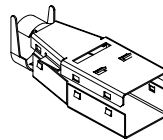
REAR CAP



MINI LATCH HOUSING

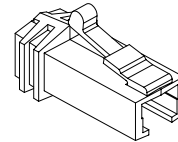


TOP SHIELD



BOTTOM SHIELD

PLUG FRONT



NOTES:

- EACH KIT CONTAINS ONE OF EACH OF THE FOLLOWING COMPONENTS  
LATCH -N- LOK PLUG  
LATCH -N- LOK END CAP  
MINI LATCH HOUSING  
360° SHIELD CANS.
- COMPONENTS ARE BULK PACKAGED WITH 100 pcs. OF A COMPONENT PER BAG. PV'S MUST BE ORDERED SEPERATELY.
- MATERIALS USED: PLUGS AND CAPS ARE MOLDED IN POLYCARBONATE. THE MINI LATCH HOUSINGS ARE MOLDED IN NYLON. COLOR IS BLACK. THE SHIELD CAN IS 3/4 HARD BRASS PLATED WITH 2.5um MIN. BRIGHT TIN. 1.0um MIN. NICKEL UNDERPLATE.
- DIMENSIONS ARE APPROXIMATE AND REFLECT PLUG IN UNLATCHED STATE.
- PART NUMBERS WITH LF IN THE END ARE LEAD FREE.
- THIS PRODUCT MEETS EUROPEAN UNION DIRECTIVES AND OTHER COUNTRY REGULATION AS DESCRIBED IN GS-22-008.

mat'l. code		surface	tolerance	projection	product family
ISO 1302		ISO 406	ISO 1101		LATCH-N-LOK
ltr	ecn	no	dr	date	title
F					2X4 LNL 360° SHIELDED PLUG CONN. KIT W/O PV'S
		tolerances unless otherwise specified		INCH/MM	scale 2:1
		angles	linear	.XX±.01/.3	
		0°±2'		.XXX±.005/.13	
		dr	M.HERNANDEZ	12/03/04	FCJ
		enrg	M. BARRIOS	12/03/04	sheet 3 of 3 size
		chr	M. BARRIOS	12/03/04	98028 A3
		appd	M. BARRIOS	12/03/04	type Product Customer Drawing
sheet	revision				
index	sheet				