

THIS DRAWING IS UNPUBLISHED. RELEASED FOR PUBLICATION
 COPYRIGHT 2000 BY TYCO ELECTRONICS CORPORATION. ALL RIGHTS RESERVED.

LOC	DIST	REVISIONS						
		P	LTR	DESCRIPTION	ECN	DATE	DWN	APVD
J		0		RELEASED	FJ00-0413-00	10MAR00	N.Y	N.S
		01		ADDED SHEET 2 OF 2	FJ00-0839-00	11MAR00	R.K	N.S
		A		REVISED	FJ00-0278-02	04FEB02	R.K	H.Y
		AI		REVISED	FJA0-0401-04	01SEP04	AY	KB

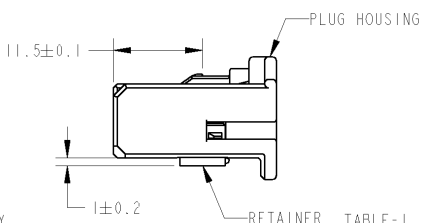
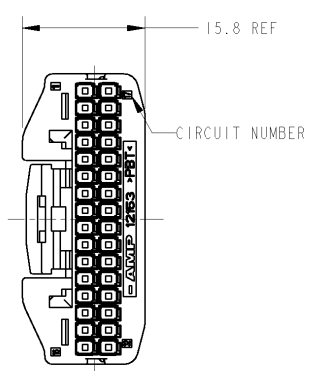
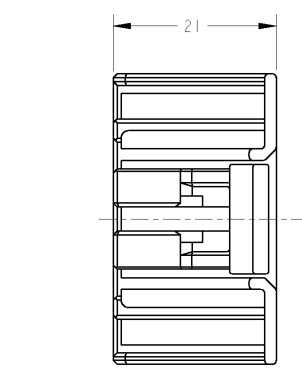
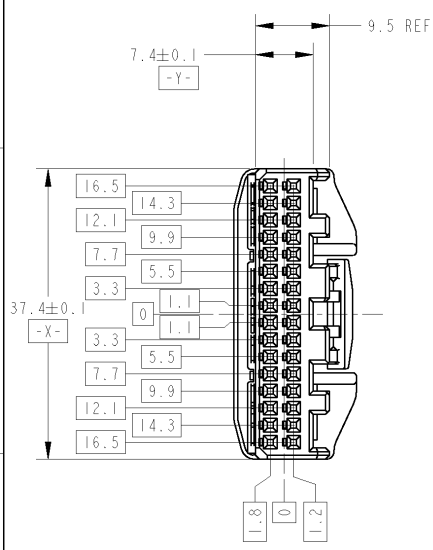


TABLE-2

		TERMINAL NO 端子型番	APPLICABLE WIRE RANGE 適用電線
SIGNAL	TIN	1123343-1	AVSS/CAVUS/AVSSH-f 0.3-0.5mm ² CAVS 0.22-0.5mm ²

PAPER BOX タボール	PLASTIC BAG ビニール袋	COLOR	PART NUMBER
OUTER 外装	INNER 内装	BLACK	1318747-2②
PACKING STYLE 梱包形態		NATURAL	1318747-1

TABLE-1

POS 極数	CAP ASSEMBLY PART NO キャップ 型番
32	1318745-1

1. RETAINER SHOULD BE SET TO THE PRE- ASSEMBLY POSITION WITHIN THE PLUG HOUSING WHEN SHIPPED TO THE CUSTOMER
2. THE RETENTION LATCH OF THE RETAINER MUST BE OUT SIDE OF PLUG HOUSING WHEN PRE-ASSEMBLY
3. RETAINER RETENTION FORCE FROM HOUSING : 20N MIN
4. INSTRUCTION SHEET NO : 411-5928
5. PART NUMBER OF CAP HOUSING TO BE MATED : SEE TABLE -1
6. APPLIED TERMINAL : SEE TABLE -2

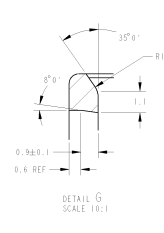
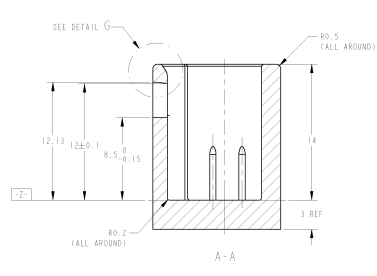
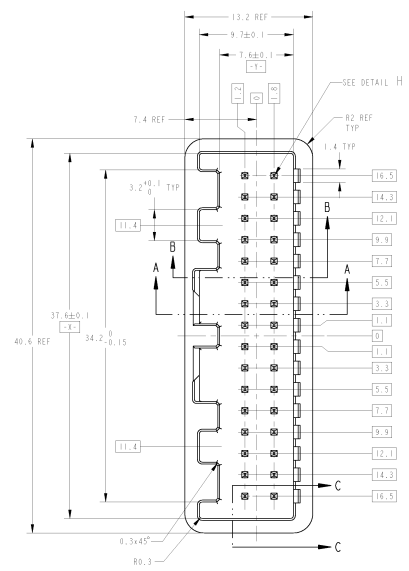
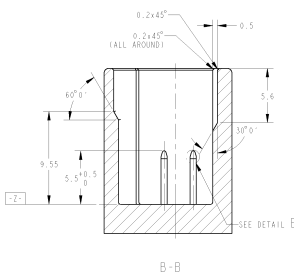
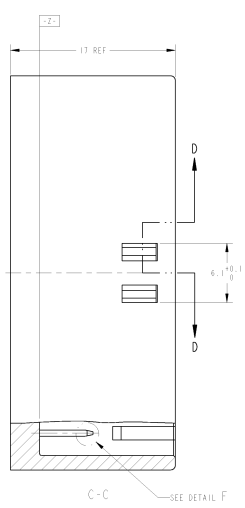
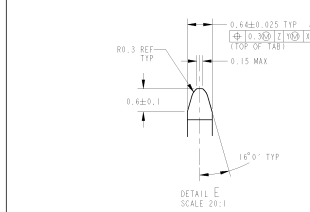
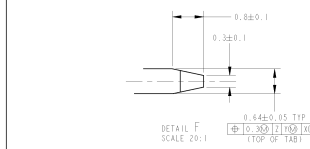
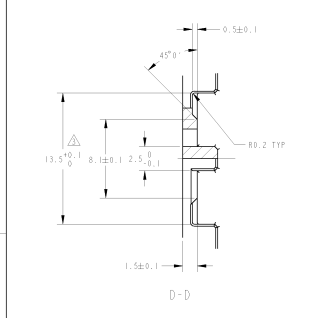
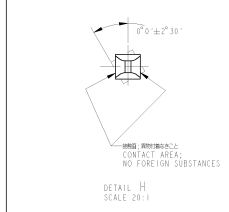
1. プラグハウジングでリテーナーを嵌止し出荷する
2. 嵌止時リテーナー突起がハウジングの外側に出ていること
3. リテーナーの嵌止保持力は 20N 以上
4. 取扱い説明書 NO : 411-5928
5. 適合相手型番は TABLE -1参照
6. 適用端子は TABLE -2参照

THIS DRAWING IS A CONTROLLED DOCUMENT FOR Tyco Electronics Corporation. IT IS SUBJECT TO CHANGE AND THE CONTROLLING ENGINEERING DEPARTMENT SHOULD BE CONTACTED FOR THE LATEST REVISION.

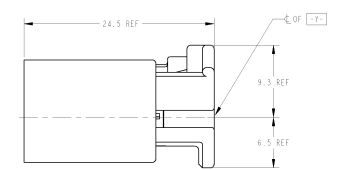
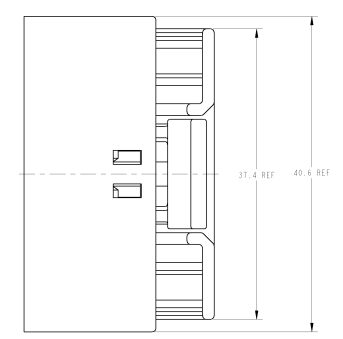
DIMENSIONS: 単位: 英 mm 	TOLERANCES UNLESS OTHERWISE SPECIFIED: 一般公差 = ± 0.3 0-PLC ± 1-PLC ±0.1 2-PLC ±0.01 3-PLC ±0.001 4-PLC ±0.0001 ANGLES ±0.001 FINISH 仕上	DWG 09MAR00 CHK N. YASUDA N. SAI APVD N. SAI IOMAR00 NAME N. SAI PRODUCT SPEC 108-5668 APPLICATION SPEC 114-5250 WEIGHT 4.71 g CUSTOMER DRAWING	Tyco Electronics AMP K.K. Kawasaki, Japan 025 SERIES 32 POSITION PLUG HOUSING ASSEMBLY SIZE A3 CAGE CODE 00779 DRAWING NO 1318747 RESTRICTED TO
--------------------------------	---	--	--

AMP 1470-19 REV 5IMAR2000

REV. NO.	DATE	DESCRIPTION
01		INITIAL RELEASE



REV. NO.	DATE	DESCRIPTION	BY	CHK	APPV
01		INITIAL RELEASE			



CAP ASSEMBLY & PLUG ASSEMBLY ENGAGEMENT VIEW
CAP ASSEMBLY & PLUG ASSEMBLY
SCALE 4:1

- UNSPECIFIED DRAFT ANGLE : 0.5° MAX
- WARPAGE : 0.15 MAX, FLASH : 0.2 MAX
- NO DRAFT ANGLE
- POSITION TOLERANCE FOR ROOT OF TAB:
(TOP VIEW) (3 POS) (IND)
- AS FOR THE HANDLING OF THIS PRODUCT,
FOLLOW THE INSTRUCTION SHEET NO. 417-5920
- HOUSING MATERIAL : PBT GF15
- TERMINAL MATERIAL : BRASS (NO. C26000, C26800)
TIN-PLATED 0.8-1.5µm OVER COPPER PLATED 0.5-1.5µm.
- THIS SHEET FOR CAP HOUSING DESIGN.
TO BE MATED WITH AMP P/N 131874T-1

REV. NO.	DATE	DESCRIPTION	BY	CHK	APPV
01		INITIAL RELEASE			

REV. NO.	DATE	DESCRIPTION	BY	CHK	APPV
01		INITIAL RELEASE			

REV. NO.	DATE	DESCRIPTION	BY	CHK	APPV
01		INITIAL RELEASE			

REV. NO.	DATE	DESCRIPTION	BY	CHK	APPV
01		INITIAL RELEASE			