

English 日本語 한국어 简体中文

Search: Go

Register | Login
My Parts (0 items)

- Product Name
 - Cross-Ref
 - Catalog
 - Literature
 - Industries
 - Standards
 - Contact Us
 - About Us
 - Investors
 - Careers
-
- Connectors
 - Sockets
 - I/O Connectors
 - Cable Assemblies
 - Fiber Optics
 - Printed Circuit Products
 - Industrial Products
 - Lighting Products

[Home](#) [Crimp Housings](#) [Datasheet](#)

Switch Language

English

Need Assistance?

- Contact Us
- Find a Distributor
- Order Samples
- Tech Library
- Ecocare
- Electrical Models

[Printer-friendly page](#)

[Email this page](#)

Part Number: 0015244048

Status: Active **Overview: Disk Drive Power Connector**

Description: 5.08mm (.200") Pitch Disk Drive Power Connection System, Female Crimp Housing

Documents: [Note - Please disable browser pop-up blockers for documents on www.molex.com](#)
[Drawing \(PDF\)](#) [Product Specification PS-8981-4M*/4P* \(PDF\)](#)
[3D Model](#) [RoHS Certificate of Compliance \(PDF\)](#)

Order Products:

Check Distributor Inventory Add to My Parts Request Samples
 Available on MolexKits.com

Part Detail: [\(show all\)](#)

[General](#) [Physical](#) [Agency Certification](#) [Material Info](#) [Reference - Drawing Numbers](#)

General

| | |
|----------------|--|
| Product Family | Crimp Housings |
| Series | 8981 |
| Application | Power |
| Overview | Disk Drive Power Connector |
| Product Name | Disk Drive Power |

Physical

| | |
|-------------------------------|----------------|
| Circuits (maximum) | 4 |
| Color - Resin | Natural |
| Flammability | 94V-2 |
| Gender | Female |
| Glow-Wire Compliant | No |
| Material - Resin | Nylon |
| Number of Rows | 1 |
| Packaging Type | Bag |
| Panel Mount | No |
| Pitch - Mating Interface | 5.08mm (.200") |
| Temperature Range - Operating | -10°C to +85°C |

Agency Certification

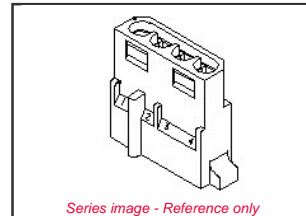
| | |
|-----|----------|
| CSA | LR19980 |
| TUV | R9551091 |
| UL | E29179 |

Material Info

| | |
|-----------------|---------|
| Old Part Number | 8981-4P |
|-----------------|---------|

Reference - Drawing Numbers

| | |
|-----------------------|-------------------------------|
| Product Specification | PS-8981-4M*/4P*, RPS-8980-002 |
| Sales Drawing | SD-8981-4P |



Series image - Reference only

EU RoHS
ELV and RoHS
Compliant

China RoHS



REACH SVHC
Contains SVHC: No

Halogen-Free Status
Low-Halogen

Need more information on product environmental compliance?

Email productcompliance@molex.com

For a multiple part number RoHS Certificate of Compliance, [click here](#)

Please visit the [Contact Us](#) section for any non-product compliance questions.

Search Parts in this Series

[8981Series](#)

Mates With

[8981 Disk Drive Power Connection System](#)

Use With

[8980p](#)

[Feedback](#) [Privacy](#) [Legal](#) [Site Map](#) [Help](#)

Find us on:

Copyright 2005-2010

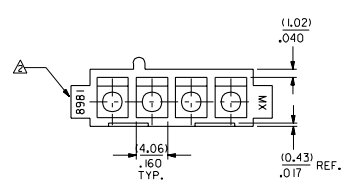
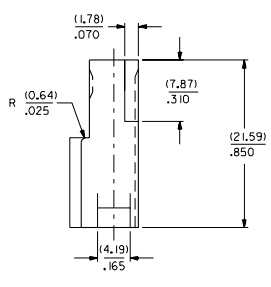
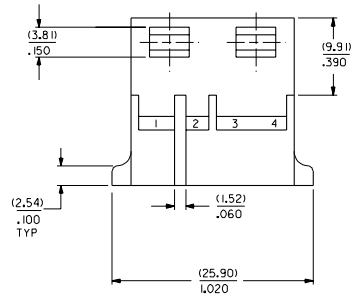
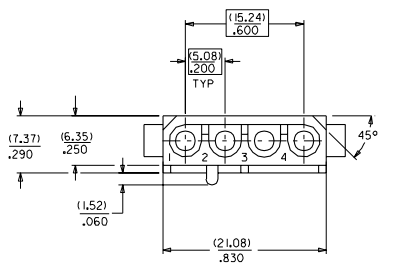
DWG. NO. SD 898 I-4P

CAD FILE S898 I4P.DGN

EDP NO: I5-24-4048

DO NOT SCALE DRAWING

8 7 6 5 4 3 2 1



NOTE:
I THIS HOUSING IS FOR USE WITH TERMINAL NO: 8980-3*

(MM)
INCH

| | | | | | | | |
|---------------------------|------------------------|-------|-----|---|--------|--|--|
| | | | | MATERIAL : NYLON 6/6, 94V-2, COLOR : NATURAL | | MOLEX SINGAPORE PTE LTD SHEET 1 OF 1 | |
| B | UPDATE ON CAD PER ECO* | S0110 | TAY | AT | 151287 | FINISH : | GENERAL TOLERANCES ± 0.20/.008 |
| A | ADD EDP NO PER ECO* | 19933 | JDK | AB | 310185 | | REV B |
| 2 | X-REL PER ECO* | 16043 | JDK | AB | 211085 | | DWG. NO. SD 898 I-4P |
| 1 | X-REL PER ECO* | 15738 | JDK | AB | 010982 | | TITLE : HSG, 4 CKT RECEPTACLE (2.13)/.084 DIA |
| LTR | REVISION RECORD | ECN | DR | CHK | DATE | DRAWN BY JDK 850131 | CHK'D BY TAY 850131 |
| REVISE ONLY ON CAD SYSTEM | | | | | | APPR'D BY AB 850131 | SCALE 2 : 1 |

THIS DRAWING CONTAINS INFORMATION THAT IS PROPRIETARY TO MOLEX (S) PTE LTD AND SHOULD NOT BE USED WITHOUT WRITTEN PERMISSION