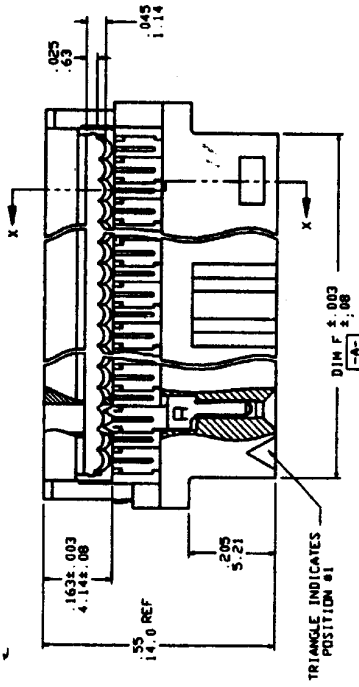
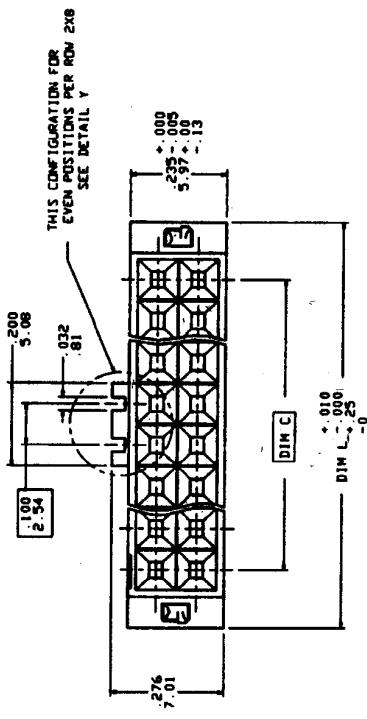


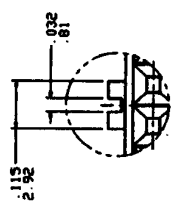
PRODUCT NUMBER
SEE TABLE



SECTION X-X



THIS CONFIGURATION FOR
EVEN POSITIONS PER ROW 2X8
SEE DETAIL Y



THIS CONFIGURATION FOR
ODD POSITIONS PER ROW 2X5
DETAIL Y

FCI www.fciconnect.com

QUICKIE BACKPLANE
FACE-LOAD-ASSEMBLY

REV: 8.1.0 DATE: 7/28/07 SHEET: 1 of 2

REV	ESN/DRWF	BY	DATE	REVISIONS	SHEET INDEX	ISSUE	TH
1			7/28/07	INITIALS	1	1	1
2			7/28/07	DESIGN	2	2	2
3			7/28/07	MANUFACTURING	3	3	3
4			7/28/07	ASSEMBLY	4	4	4
5			7/28/07	TESTING	5	5	5
6			7/28/07	QUALITY	6	6	6
7			7/28/07	MARKETING	7	7	7
8			7/28/07	SALES	8	8	8
9			7/28/07	OPERATIONS	9	9	9
10			7/28/07	FINANCE	10	10	10
11			7/28/07	LEGAL	11	11	11
12			7/28/07	HR	12	12	12
13			7/28/07	IT	13	13	13
14			7/28/07	SECURITY	14	14	14
15			7/28/07	ENVIRONMENTAL	15	15	15
16			7/28/07	LOGISTICS	16	16	16
17			7/28/07	COMPLIANCE	17	17	17
18			7/28/07	CONTRACTS	18	18	18
19			7/28/07	INVENTORY	19	19	19
20			7/28/07	TRAINING	20	20	20

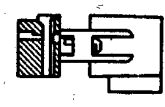
NOTE: THIS DOCUMENT IS THE PROPERTY OF FCI. IT IS TO BE KEPT IN CONFIDENTIALITY AND NOT TO BE REPRODUCED OR TRANSMITTED IN ANY FORM OR BY ANY MEANS WITHOUT THE WRITTEN CONSENT OF FCI. ANY UNAUTHORIZED REPRODUCTION OR TRANSMISSION IS STRICTLY PROHIBITED.

PRODUCT NUMBER	SIZE	DIM C	DIM F	DIM L	DASH NO	COVER ORIENTATION	BASE STYLE
66245-110	2X5	.400/10.16	.530/13.46	.680/17.27	-0XX	RIGHT	PLAIN
-X14	2X7	.600/15.24	.730/18.54	.880/22.35	-1XX	LEFT	PLAIN
-X16	2X8	.700/17.78	.830/21.08	.980/24.89	-2XX	RIGHT	POLARIZED
-X20	2X10	.900/22.86	1.030/26.16	1.180/29.97	-3XX	LEFT	POLARIZED
-X24	2X12	1.100/27.94	1.230/31.24	1.380/35.10			
-X26	2X13	1.200/30.48	1.330/33.78	1.480/37.59			
-X30	2X15	1.400/35.56	1.530/38.96	1.680/42.70			
-X34	2X17	1.600/40.64	1.730/43.94	1.880/47.75			
-X36	2X18	1.700/43.18	1.830/46.48	1.980/50.30			
-X40	2X20	1.900/48.26	2.030/51.56	2.180/55.37			
-X44	2X22	2.100/53.34	2.230/56.54	2.380/60.50			
-X50	2X25	2.400/60.96	2.530/64.26	2.680/68.07			
-X56	2X30	2.700/68.58	2.830/71.88	2.980/75.78			
-X60	2X30	2.900/73.66	3.030/76.96	3.180/80.77			
66245-164		UNASSIGNED					

NOTES:

1. TERMINAL MATERIAL: FULL HARD PHOS. BRONZE ALLOY, UNS-CS1000.
2. TERMINAL PLATING: 50u"71.27u MIN NI UNDERPLATE OVER ENTIRE TERMINAL AND 30u"7.62u MIN AG IN CONTACT AREA WITH AG FLASH ON REMAINDER OF TERMINAL.
3. MOLDING MATERIAL: BASE & COVER- GLASS FILLED POLYESTER, FLAME RETARDANT PER UL94V-0, COLOR- BLUE.
4. CONNECTOR ASSYS PACKAGED INDIVIDUALLY, 10 PER CARD, THEN BOXED IN LOTS OF 100.

COVER ORIENTATION



REV	TECH/DOCT	BY	DATE	SHEET INDEX	ISSUE SH NO	1	2	3	4	5	6	7	8	9	10

FCI www.fciconnect.com

QUICKIE BACKPLANE PRE-LOAD ASSEMBLY

DATE: 7/28/07

REV: 8.1 D

66245 2 of 2