

PROD. NO  
SEE NOTE

1 2

3

4

mod'l. code		tolerances unless otherwise specified		CUSTOMER COPY		FCI		www.fcimed.com	
litr	con no	dr	date	litr	con no	dr	date	litr	con no
A	T05-0240	JH	07/22/03						
B	T05-0013	JH	1/16/06						

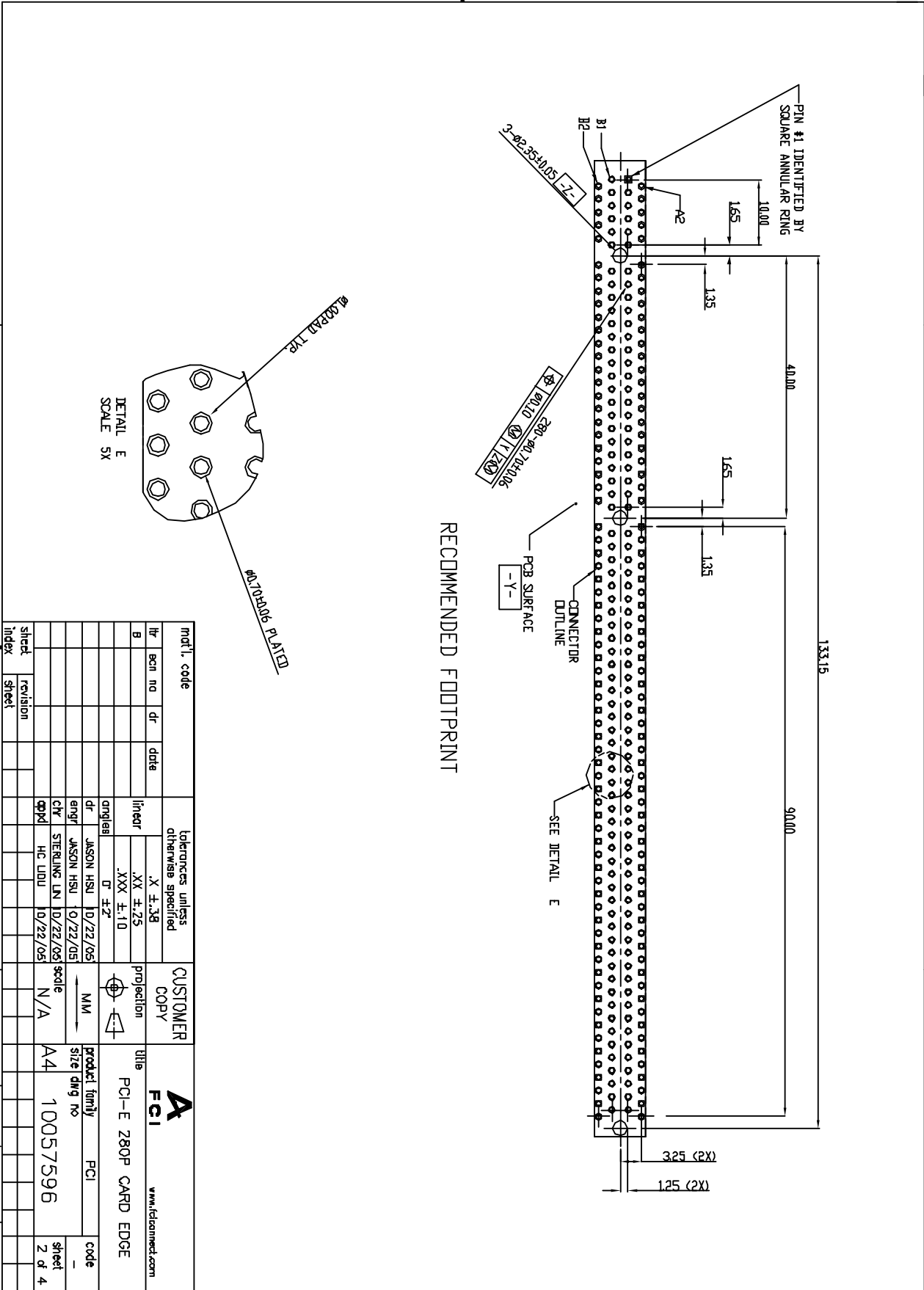
street		revision		index	
street	revision	index	street	revision	index
	B	1		B	2
	B	2		B	3
	B	3		B	4
	B	4			

product family		product no		code	
product family	product no	code	product family	product no	code
PCI	10057596	A4	PCI	10057596	A4

sheet		sheet	
sheet	sheet	sheet	sheet
1	2	3	4

ACAD

code  
22526

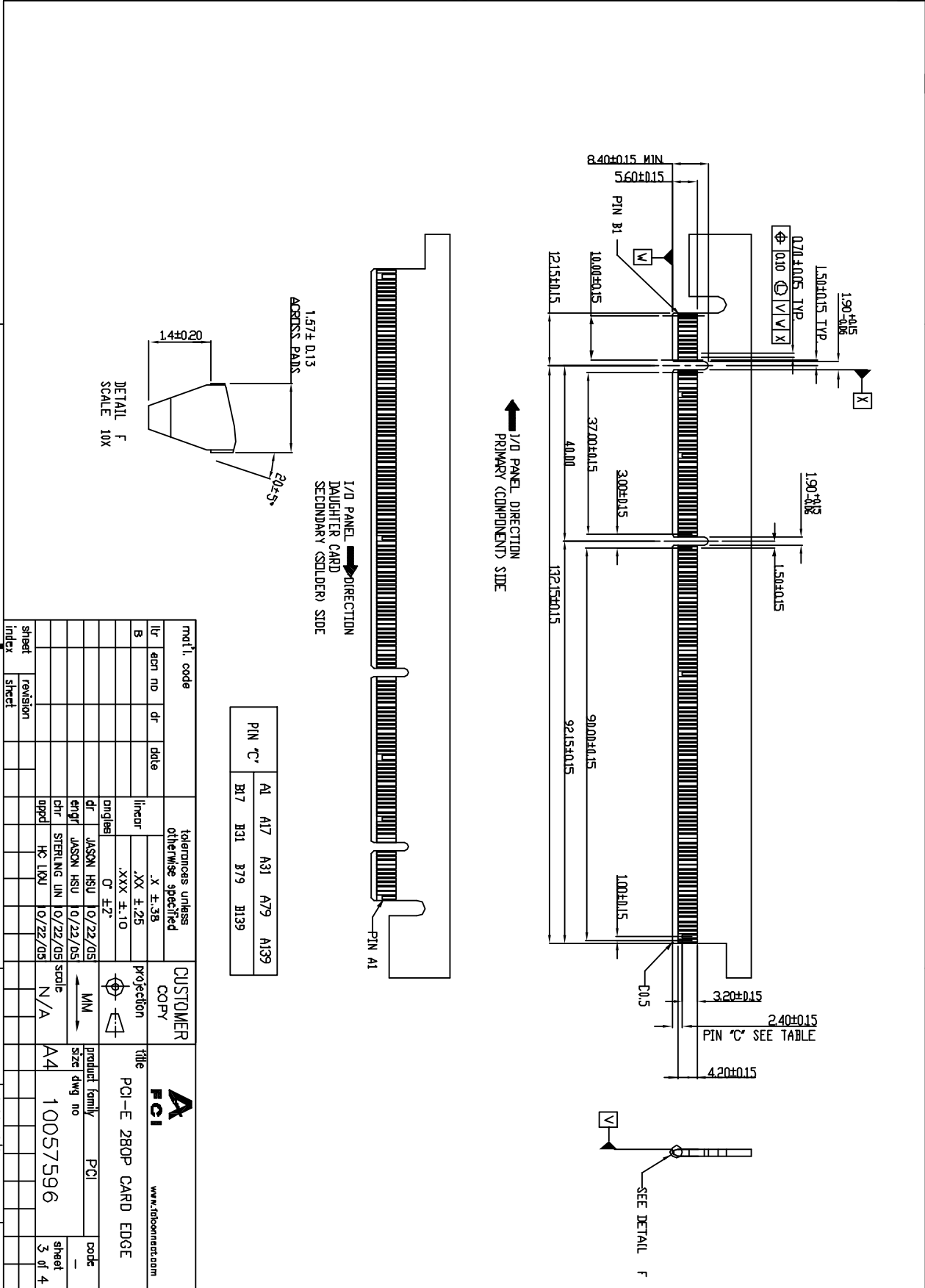


RECOMMENDED FOOTPRINT

matl. code	lot/nbrs unless otherwise specified	CUSTOMER COPY	title	product family	code
lot	.X F.38	projection	<b>FCI</b>	PCI-E Z80P CARD EDGE	
B	.XX ±.25				
	.XXX ±.10				
	D ±.2"				
	dr JASON HSU 10/22/05				
	engr JASON HSU 0/22/05				
	chf STERLING LNI 10/22/05				
	appd HC LDUU 10/22/05				
sheet	revision	scale	A4	10057596	sheet 2 of 4
index	sheet	N/A			

ACAD

page code  
22526





1 | 2

3

4

NOTES:  
 1. MATERIAL: THERMOPLASTIC WITH GLASS FIBER, UL94V-0,  
 HOUSING: GOLD IN BLACK,  
 CONTACTS: COPPER ALLOY.

2. FINISH:  
 CONTACTS: GOLD PLATING ON CONTACT AREA,  
 100 U/MIN. TIN/LEAD OR MATTE TIN (LEAD FREE OPTION) PLATING ON SOLDER TAILS,  
 50 U/MIN. NICKEL UNDERPLATING OVER ALL.

3. DURABILITY: 50 CYCLES.

4. ROHS COMPATIBLE PRODUCT SPECIFICATIONS

a. PLATING: "LF" MEANS THE PRODUCT IS LEAD FREE, 25um min. MATTE PURE TIN OVER 1.27um MIN. NICKEL UNDERPLATE.

b. MANUFACTURING PROCESS COMPATIBILITY: THE HOUSING WILL WITHSTAND EXPOSURE TO 260C+5C\* SOLDER BATH TEMPERATURE FOR 5 SECONDS IN A WAVE SOLDER APPLICATION WITH A 157MM THICK CIRCUIT BOARD.

PRODUCT NUMBER CODE  
 10057596 - X X X X X X X X

HOUSING COLOR OPTIONS  
 1-BLACK

PEGS OPTIONS  
 0-PLASTIC PEGS

TERMINAL PLATING OPTIONS  
 0-50U" NI UNDERPLATE  
 30U" Au CONTACT AREA  
 100U" TIN TAIL AREA -----COMPATIBLE ROHS  
 1-50U" NI UNDERPLATE  
 15U" Au CONTACT AREA -----COMPATIBLE ROHS  
 2-50U" N UNDERPLATE  
 GOLD FLASH CONTACT AREA  
 100U" TIN TAIL AREA -----COMPATIBLE ROHS

LEAD FREE

PACKAGING OPTIONS  
 T-TRAY PACKAGING  
 RESERVE

TAIL LENGTH OPTIONS

1	2	3	4
DIN "D"	SUGGESTED PCB THICKNESS		
310	2.36-4.010		
254	1.56-4.010		

mat'l. code		tolerances unless otherwise specified		CUSTOMER COPY		A FCI www.fcimed.com	
itr	esn no	dr	date	file/cr	projection	title	product family
B				.XX ±.25 .XXX ±.10	MNI	PCI-E 280P CARD EDGE	PCI
				angles			
				dr	JASON HBU 10/22/05		
				enpl	JASON HBU 07/22/05		
				chr	STERLING LIN 10/22/05		
				qpld	HC LCU 10/22/05		
sheet	revision						
index	sheet						

ACAD

3

4

code code  
 22526