

NOTES:
 1. MATERIAL: UNFILLED NYLON UL94 FLAMMABILITY RATING V-2 COLOR WHITE
 2. THIS PART CONFORMS TO PS-08-50
 3. DIMENSIONS GIVEN ACROSS CENTERLINES ARE SYMMETRICAL ABOUT THOSE CENTERLINES WITHIN ONE HALF THE TOTAL TOLERANCE.
 4. FOR THIS PART WITHOUT HOOK SEE 2574.
 5. CONNECTOR TO BE USED WITH CRIMP TERMINALS 2878, 2478, 2578
 6. RIB WIDTH .040 REF EXCEPT WHEN RIB IS ADJACENT OF THE HOOK, THEN RIB WIDTH IS .025+.006

NO. OF CKT'S	DIM. C	DIM. B	DIM. D
3	.632 (16.05)	.312+.002 (7.92±.05)	.618 (15.70)
4	.788 (20.02)	.468+.002 (11.89±.05)	.774 (19.66)
5	.944 (23.98)	.624+.003 (15.85±.08)	.922 (23.42)
6	1.100 (27.94)	.780+.003 (19.81±.08)	1.078 (27.38)
7	1.256 (31.90)	.936+.003 (23.77±.08)	1.232 (31.29)
8	1.412 (35.86)	1.092±.004 (27.74±.10)	1.388 (35.26)
9	1.568 (39.83)	1.248±.004 (31.70±.10)	1.544 (39.22)
10	1.724 (43.79)	1.404±.006 (35.66±.15)	1.700 (43.18)
11	1.880 (47.75)	1.560±.006 (39.62±.15)	1.854 (47.09)
12	2.036 (51.71)	1.716±.006 (43.59±.15)	2.010 (51.05)
13	2.192 (55.68)	1.872±.006 (47.55±.15)	2.164 (54.97)
14	2.348 (59.64)	2.028±.007 (51.51±.18)	2.318 (58.88)
15	2.504 (63.60)	2.184±.007 (55.47±.18)	2.474 (62.84)
16	2.660 (67.56)	2.340±.007 (59.44±.18)	2.631 (66.83)
17	2.816 (71.53)	2.496±.008 (63.40±.20)	2.784 (70.71)
18	2.972 (75.49)	2.652±.009 (67.36±.25)	2.934 (75.03)
19	3.128 (79.45)	2.808±.009 (71.32±.23)	3.085 (78.61)
20	3.284 (83.41)	2.964±.009 (75.29±.23)	3.251 (82.58)
21	3.440 (87.38)	3.120±.010 (79.25±.25)	3.407 (86.54)
22	3.596 (91.34)	3.276±.011 (83.21±.25)	3.562 (90.47)
23	3.752 (95.30)	3.432±.011 (87.17±.28)	3.716 (94.39)
24	3.908 (99.26)	3.588±.012 (91.14±.30)	3.871 (98.32)

REV. 01 10/15/94

REV. 02 03/20/94

REV. 03 06/09/94

REV. 04 06/09/94

REV. 05 06/09/94

REV. 06 06/09/94

REV. 07 06/09/94

REV. 08 06/09/94

REV. 09 06/09/94

REV. 10 06/09/94

REV. 11 06/09/94

REV. 12 06/09/94

REV. 13 06/09/94

REV. 14 06/09/94

REV. 15 06/09/94

REV. 16 06/09/94

REV. 17 06/09/94

REV. 18 06/09/94

REV. 19 06/09/94

REV. 20 06/09/94

REV. 21 06/09/94

REV. 22 06/09/94

REV. 23 06/09/94

REV. 24 06/09/94

REV. 25 06/09/94

REV. 26 06/09/94

REV. 27 06/09/94

REV. 28 06/09/94

REV. 29 06/09/94

REV. 30 06/09/94

REV. 31 06/09/94

REV. 32 06/09/94

REV. 33 06/09/94

REV. 34 06/09/94

REV. 35 06/09/94

REV. 36 06/09/94

REV. 37 06/09/94

REV. 38 06/09/94

REV. 39 06/09/94

REV. 40 06/09/94

REV. 41 06/09/94

REV. 42 06/09/94

REV. 43 06/09/94

REV. 44 06/09/94

REV. 45 06/09/94

REV. 46 06/09/94

REV. 47 06/09/94

REV. 48 06/09/94

REV. 49 06/09/94

REV. 50 06/09/94

REV. 51 06/09/94

REV. 52 06/09/94

REV. 53 06/09/94

REV. 54 06/09/94

REV. 55 06/09/94

REV. 56 06/09/94

REV. 57 06/09/94

REV. 58 06/09/94

REV. 59 06/09/94

REV. 60 06/09/94

REV. 61 06/09/94

REV. 62 06/09/94

REV. 63 06/09/94

REV. 64 06/09/94

REV. 65 06/09/94

REV. 66 06/09/94

REV. 67 06/09/94

REV. 68 06/09/94

REV. 69 06/09/94

REV. 70 06/09/94

REV. 71 06/09/94

REV. 72 06/09/94

REV. 73 06/09/94

REV. 74 06/09/94

REV. 75 06/09/94

REV. 76 06/09/94

REV. 77 06/09/94

REV. 78 06/09/94

REV. 79 06/09/94

REV. 80 06/09/94

REV. 81 06/09/94

REV. 82 06/09/94

REV. 83 06/09/94

REV. 84 06/09/94

REV. 85 06/09/94

REV. 86 06/09/94

REV. 87 06/09/94

REV. 88 06/09/94

REV. 89 06/09/94

REV. 90 06/09/94

REV. 91 06/09/94

REV. 92 06/09/94

REV. 93 06/09/94

REV. 94 06/09/94

REV. 95 06/09/94

REV. 96 06/09/94

REV. 97 06/09/94

REV. 98 06/09/94

REV. 99 06/09/94

REV. 100 06/09/94

REV. 101 06/09/94

REV. 102 06/09/94

REV. 103 06/09/94

REV. 104 06/09/94

REV. 105 06/09/94

REV. 106 06/09/94

REV. 107 06/09/94

REV. 108 06/09/94

REV. 109 06/09/94

REV. 110 06/09/94

REV. 111 06/09/94

REV. 112 06/09/94

REV. 113 06/09/94

REV. 114 06/09/94

REV. 115 06/09/94

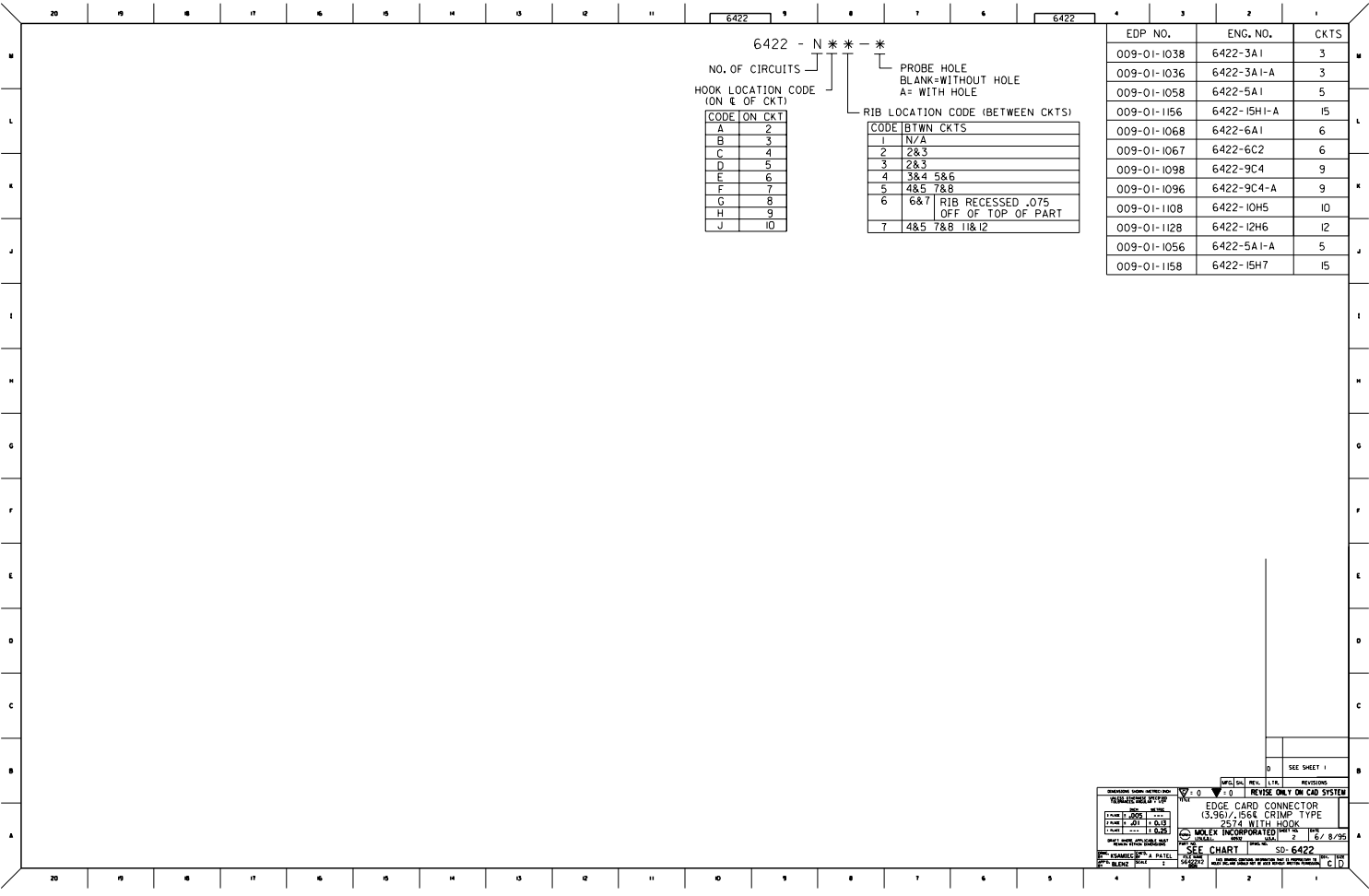
REV. 116 06/09/94

REV. 117 06/09/94

REV. 118 06/09/94

REV. 119 06/09/94

REV. 120 06/09/94



6422 - N * * *

NO. OF CIRCUITS]

HOOK LOCATION CODE (ON E OF CKT)

PROBE HOLE
BLANK-WITHOUT HOLE
A= WITH HOLE

RIB LOCATION CODE (BETWEEN CKTS)

CODE	ON CKT
A	2
B	3
C	4
D	5
E	6
F	7
G	8
H	9
J	10

CODE	BETWN CKTS
1	N/A
2	2&3
3	2&3
4	3&4 5&6
5	4&5 7&8
6	6&7 RIB RECESSED .075 OFF OF TOP OF PART
7	4&5 7&8 11&12

EDP NO.	ENG. NO.	CKTS
009-01-1038	6422-3A1	3
009-01-1036	6422-3A1-A	3
009-01-1058	6422-5A1	5
009-01-1156	6422-15H1-A	15
009-01-1068	6422-6A1	6
009-01-1067	6422-6C2	6
009-01-1098	6422-9C4	9
009-01-1096	6422-9C4-A	9
009-01-1108	6422-10H5	10
009-01-1128	6422-12H6	12
009-01-1056	6422-5A1-A	5
009-01-1158	6422-15H7	15

REV.	DATE	BY	CHKD.	REVISIONS
1	10/1/95	SD		EDGE CARD CONNECTOR (3.961) / 1566 CRIMP TYPE 25.14 WITH HOOK
2	11/8/95	SD		MOLEX INCORPORATED
3		SD		SEE CHART SD-6422