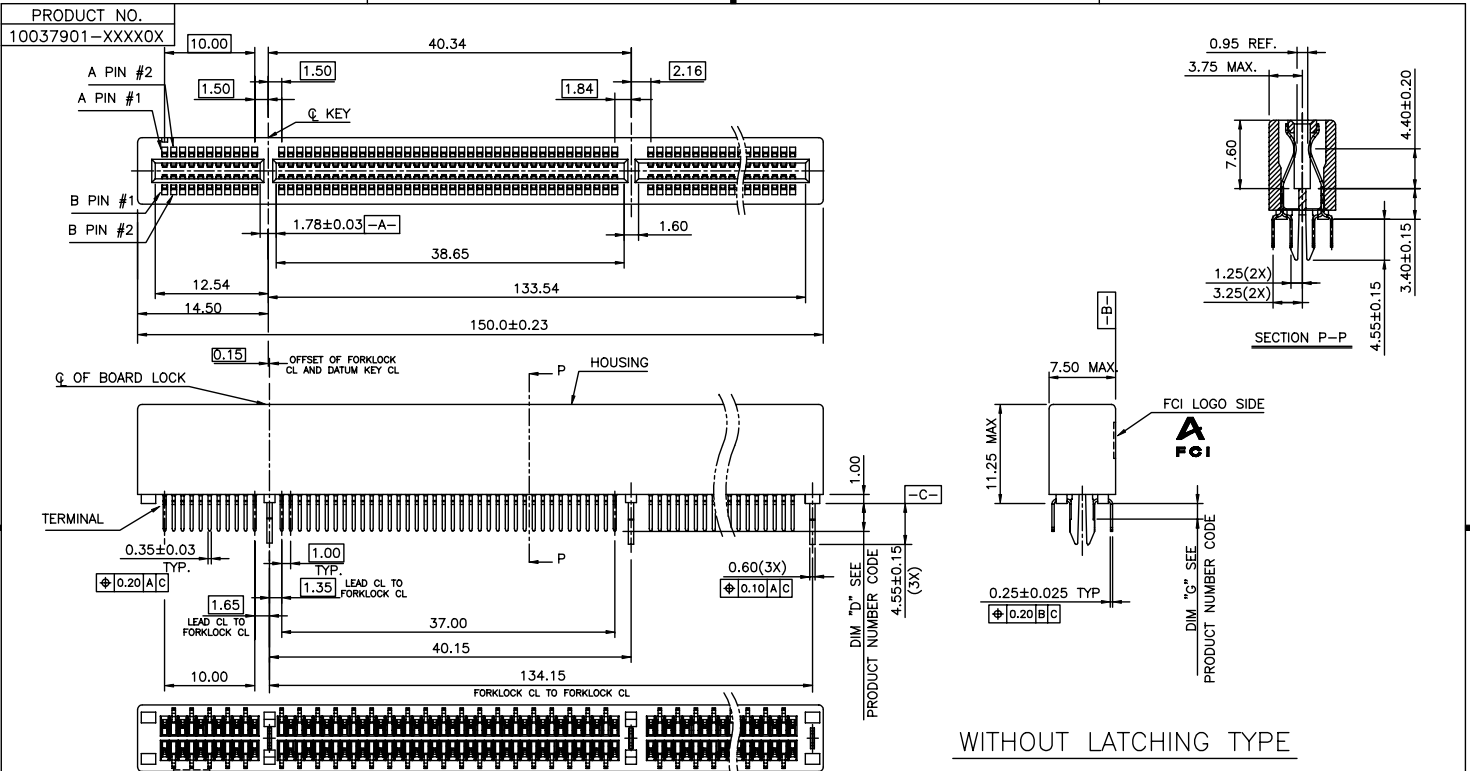


Tous droits strictement réservés. Reproduction ou communication a des tiers interdite sous quelque forme que ce soit sans autorisation écrite du propriétaire. Property of FCI. Droits de reproduction FCI.

All rights strictly reserved. Reproduction or issue to third parties in any form whatever is not permitted without written authority from the proprietor. Property of FCI. Copyright FCI.



WITHOUT LATCHING TYPE

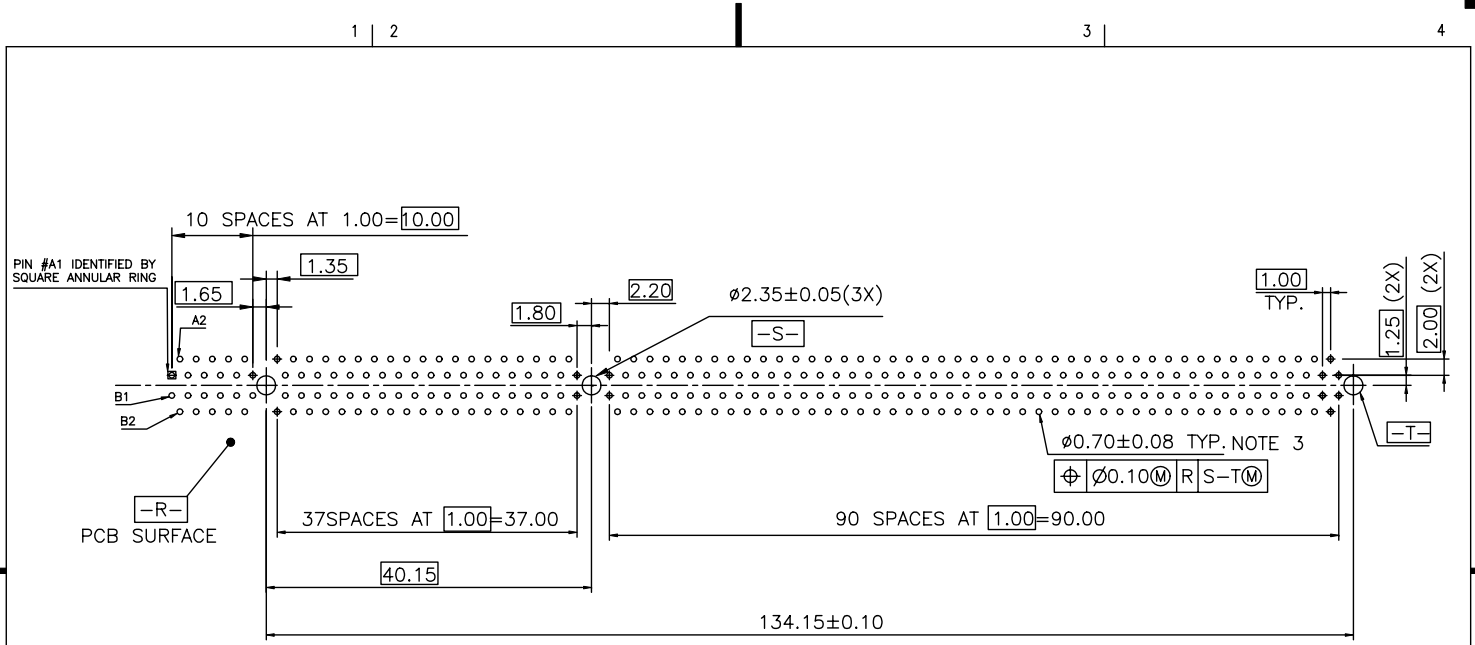
CONFIDENTIAL

mat'l. code				tolerances unless otherwise specified			CUSTOMER COPY		FCI	
ltr	ecn no	dr	date	linear	.X ± 0.30	projection	MM	title	www.fciconnect.com	
A	T04-0383	M W	10/06/04		.XX ± 0.20	MM		PCI EXPRESS SUPER SLOT		
B	T05-0012	M W	01/13/05	angles	.XXX ± 0.10	MM		CARD EDGE 280P ASS'Y		
C	T05-0210	M W	09/15/05		0° ± 2°	MM		product family	EDGE CARD	
				dr	MAGGIE WU 01/30/04	scale	2:1	size	A4	
				enrg	R Y LIU 01/30/04			dwg no	10037901	
				chr	PAUL WANG 01/30/04			code	TWN	
				appd	J. HSIA 01/30/04			sheet	1 of 4	
sheet index	revision sheet	C	A	A	C					
		1	2	3	4					

ACAD PDM: Rev:C STATUS: Released 22526 Formed Aug.02, 2008

Tous droits strictement réservés. Reproduction ou communication a des tiers interdite sous quelque forme que ce soit sans autorisation écrite du propriétaire. Property of FCI. Droits de reproduction FCI.

All rights strictly reserved. Reproduction or issue to third parties in any form whatever is not permitted without written authority from the proprietor. Property of FCI. Copyright FCI.



MOTHER BOARD FOOTPRINT PATTERN
CONNECTOR SIDE SHOWN

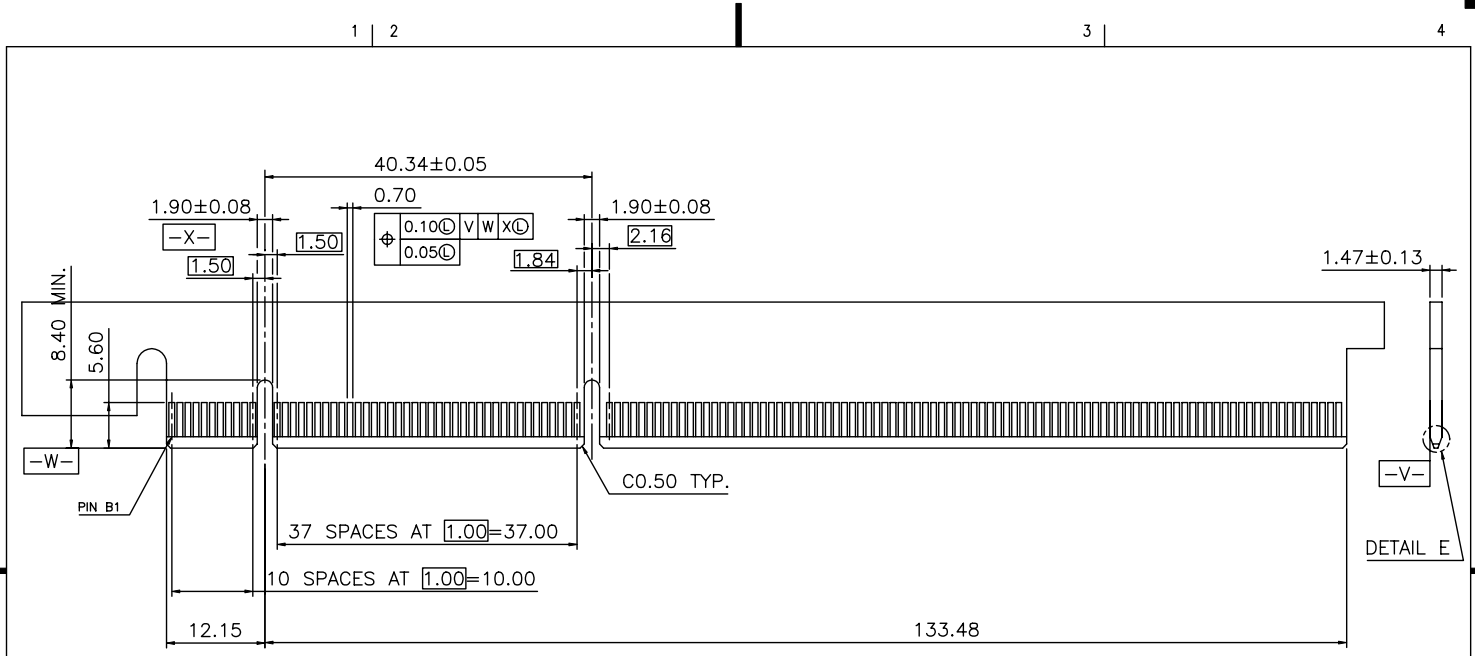
CONFIDENTIAL

mat'l. code				tolerances unless otherwise specified		CUSTOMER COPY		FCI www.fciconnect.com	
ltr	ecn no	dr	date	linear	.X ±	projection	title		
A					.XX ±		PCI EXPRESS SUPER SLOT CARD EDGE 280P ASS'Y		
				angles	.XXX ±		product family	EDGE CARD	code
					0° ±2°	MM	size	TWN	
				dr	MAGGIE WU 01/30/04	scale	A4	10037901	sheet
				enrg	R Y LIU 01/30/04	1.5:1		2 of	
				chr	PAUL WANG 01/30/04				
				appd	J. HSIA 01/30/04				
sheet index	revision sheet								

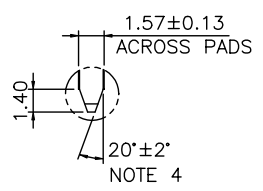
ACAD PDM: Rev:C STATUS:Released cage code 22526 Printed: Aug 02, 2008

Tous droits strictement réservés. Reproduction ou communication a des tiers interdite sous quelque forme que ce soit sans autorisation écrite du propriétaire. Property of FCI. Droits de reproduction FCI.

All rights strictly reserved. Reproduction or issue to third parties in any form whatever is not permitted without written authority from the proprietor. Property of FCI. Copyright FCI.



DAUGHTER CARD
PRIMARY (COMPONENT) SIDE



CONFIDENTIAL

mat'l. code				tolerances unless otherwise specified		CUSTOMER COPY		FCI www.fciconnect.com	
ltr	ecn no	dr	date	linear	.X ±	projection		title	
A					.XX ±			PCI EXPRESS SUPER SLOT	
				angles	.XXX ±			product family	EDGE CARD
					0° ±2°	MM	size	dwg no	TWN
				dr	MAGGIE WU 01/30/04	scale	A4	10037901	sheet
				enrg	R Y LIU 01/30/04	1.5:1			3 of
				chr	PAUL WANG 01/30/04				
				appd	J. HSIA 01/30/04				
sheet index	revision sheet								

ACAD PDM: Rev:C STATUS:Released cage code 22526 Printed Aug 02, 2008

NOTES:

- 1.MATERIAL:
 - HOUSING: HIGH TEMPERATURE NYLON, GLASS FILLED UL94V-0 RATED. SUITABLE FOR IR REFLOW.
 - TERMINAL: COPPER ALLOY
 - PLATING: 50u" NICKEL UNDERPLATE ALL OVER
CONTACT AREA PLATING - SEE PRODUCT NUMBER CODE
SOLDER TAIL: TIN OR TIN/LEAD (90/10) - SEE PRODUCT NUMBER CODE 100u" MIN. OVER 50u" NICKEL
 - METAL BOARD LOCKS: COPPER ALLOY
FINISH: 100u" TIN OR TIN/LEAD (90/10) OVER 50u" NICKEL UNDERPLATE SEE PRODUCT NUMBER CODE
- 2.PRODUCT SPECIFICATION: GS-12-233
- ③THE HORIZONTAL AXIS FOR THE HOLE PATTERN IS ESTABLISHED BY A LINE THROUGH THE CENTER OF THE TWO Ø2.35 HOLES. THE VERTICAL AXIS IS 90° TO THE HORIZONTAL AXIS, THROUGH THE CENTER OF DATUM Z.
- ④CHAMFER EDGES MUST BE FREE OF CUTTING BURRS.
- 5.RoHS COMPATIBLE PRODUCT SPECIFICATIONS
 - a - PLATING:
 - "LF" MEANS THE PRODUCT IS LEAD-FREE, 2um MINIMUM MATTE TIN OVER 1.27um MINIMUM NICKEL UNDERPLATE.
 - b - MANUFACTURING PROCESS COMPATIBILITY
 - THE HOUSING WILL WITHSTAND EXPOSURE TO 260°C±5°C SOLDER BATH TEMPERATURE FOR 5 SECONDS IN A REFLOW SOLDER APPLICATION WITH A 1.6mm MIN THICK CIRCUIT BOARD.

PRODUCT NUMBER CODE

10037901 -x x x x x □ □

HOUSING COLOR OPTIONS

1-BLACK

PEGS OPTIONS

1-METAL BOARD LOCKS

TERMINAL PLATING OPTIONS

LEAD FREE OPTION

LEAVE BLANK FOR TERMINAL PLATING 3,4,5
"LF" FOR TERMINAL PLATING OPTION 0,1,2

PACKAGING OPTIONS
T-TRAY PACKAGING


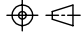
TAIL LENGTH OPTIONS

LATCHING OPTIONS
0-WITHOUT LATCHING

	DIM "D"	PCB THICKNESS	BOARD LOCKS DIM "G"
0	2.30 ±0.25	1.56±0.10	1.70±0.15
1	3.10 ±0.25	2.36±0.10	2.50±0.15
2	2.54±0.25	1.56±0.10	1.70±0.15

- 0-50u" Ni UNDERPLATE
30u" Au CONTACT AREA
100u" TIN TAIL AREA ----- COMPATIBLE RoHS
- 1-50u" Ni UNDERPLATE
15u" Au CONTACT AREA
100u" TIN TAIL AREA ----- COMPATIBLE RoHS
- 2-50u" Ni UNDERPLATE
GOLD FLASH CONTACT AREA
100u" TIN TAIL AREA ----- COMPATIBLE RoHS
- 3-50u" Ni UNDERPLATE
30u" Au CONTACT AREA
100u" TIN/LEAD TAIL AREA ----- INCOMPLIANT RoHS
- 4-50u" Ni UNDERPLATE
15u" Au CONTACT AREA
100u" TIN/LEAD TAIL AREA ----- INCOMPLIANT RoHS
- 5-50u" Ni UNDERPLATE
GOLD FLASH CONTACT AREA
100u" TIN/LEAD TAIL AREA ----- INCOMPLIANT RoHS

CONFIDENTIAL

mat'l. code				tolerances unless otherwise specified		CUSTOMER COPY		 www.fciconnect.com	
ltr	ecr no	dr	date	linear	.X ±	projection	title	PCI EXPRESS SUPER SLOT	
C					.XX ±		CARD EDGE 280P ASS'Y		
				angles	.XXX ±		product family	EDGE CARD	code
					0° ±2°	MM	size	dwg no	TWN
				dr	MAGGIE WU 01/30/04	scale	A4	10037901	sheet
				enrg	R Y LIU 01/30/04	1:1			4 of
				chr	PAUL WANG 01/30/04				
				appd	J. HSIA 01/30/04				
sheet index	revision sheet								

ACAD

PDM: Rev:C

STATUS:Released 22526
Printed: Aug 02, 2008

Tous droits strictement reserves. Reproduction ou communication a des tiers interdite sous quelque forme que ce soit sans autorisation écrite du propriétaire. Property of FCI. Droits de reproduction FCI.

All rights strictly reserved. Reproduction or issue to third parties in any form whatever is not permitted without written authority from the proprietor. Property of FCI. Copyright FCI.

A
B