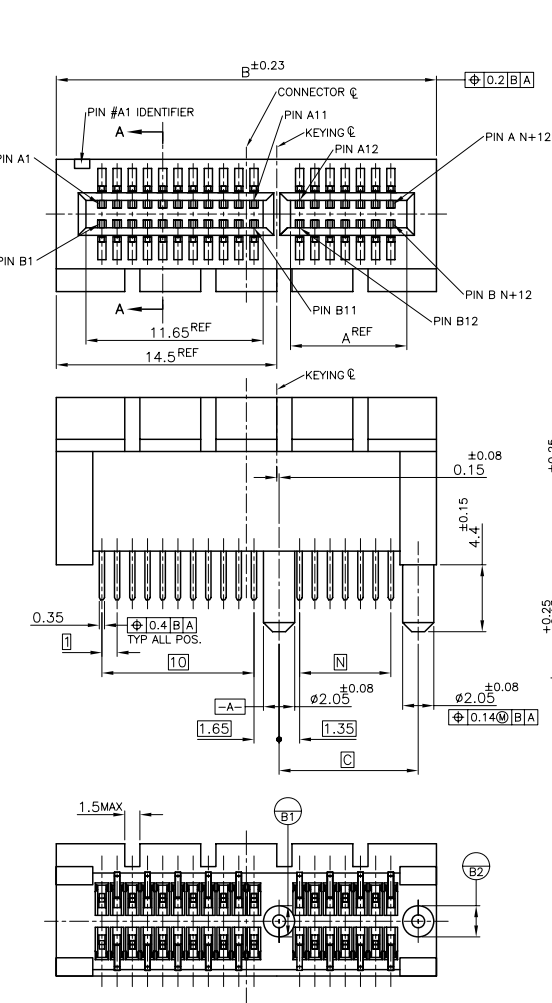


THIS DRAWING IS UNPUBLISHED. RELEASED FOR PUBLICATION FEB. 2003.  
 © COPYRIGHT 2003 BY TYCO ELECTRONICS CORPORATION. ALL RIGHTS RESERVED.

LOC	DIST	REVISIONS			
P	LTR	DESCRIPTION	DATE	DN	APVD
K		REVISED (ECR-08-027874)	04NOV08	B.W	W.K



△ MATERIAL;  
 HOUSING: HIGH TEMPERATURE THERMO PLASTIC  
 UL94V-0, COLOR; BLACK  
 CONTACT: COPPER ALLOY  
 △ FINISH;  
 CONTACT AREA: GOLD PL. 0.05 μm MIN OVER NICKEL PL.  
 TINE AREA: MATTE TIN PL. OVER NICKEL PL.  
 △ FINISH;  
 CONTACT AREA: GOLD PL. 0.38 μm MIN OVER NICKEL PL.  
 TINE AREA: MATTE TIN PL. OVER NICKEL PL.  
 △ FINISH;  
 CONTACT AREA: GOLD PL. 0.76 μm MIN OVER NICKEL PL.  
 TINE AREA: MATTE TIN PL. OVER NICKEL PL.  
 5. CONNECTOR HAS MET THE REQUIREMENTS PER PCI EXPRESS GEN 2 TECHNICAL DOCUMENT.

TOOLING STATUS	FINISH	N	D	C	B	A	POS.	PORT	P/N		
PRODUCING	↑	70	↑	73.15	89	71.65	164	16	8-	↑	-4
PRODUCING	↑	37	↑	40.15	56	38.65	98	8	8-	↑	-3
PRODUCING	↑	20	↑	23.15	39	21.65	64	4	8-	↑	-2
PRODUCING	△	6	↑	9.15	25	7.65	36	1	8-1612163-	↑	-1
PRODUCING	↑	70	↑	73.15	89	71.65	164	16	6-	↑	-4
PRODUCING	↑	37	↑	40.15	56	38.65	98	8	6-	↑	-3
PRODUCING	↑	20	↑	23.15	39	21.65	64	4	6-	↑	-2
PRODUCING	△	6	3.56	9.15	25	7.65	36	1	6-1612163-	↑	-1
PRODUCING	↑	70	↑	73.15	89	71.65	164	16	5-	↑	-4
PRODUCING	↑	37	↑	40.15	56	38.65	98	8	5-	↑	-3
PRODUCING	↑	20	↑	23.15	39	21.65	64	4	5-	↑	-2
PRODUCING	↑	6	3.1	9.15	25	7.65	36	1	5-1612163-	↑	-1
PRODUCING	↑	70	↑	73.15	89	71.65	164	16	4-	↑	-4
PRODUCING	↑	37	↑	40.15	56	38.65	98	8	4-	↑	-3
PRODUCING	↑	20	↑	23.15	39	21.65	64	4	4-	↑	-2
PRODUCING	△	6	2.3	9.15	25	7.65	36	1	4-1612163-	↑	-1
PRODUCING	↑	70	↑	73.15	89	71.65	164	16	3-	↑	-4
PRODUCING	↑	37	↑	40.15	56	38.65	98	8	3-	↑	-3
PRODUCING	↑	20	↑	23.15	39	21.65	64	4	3-	↑	-2
PRODUCING	↑	6	3.1	9.15	25	7.65	36	1	3-1612163-	↑	-1
PRODUCING	↑	70	↑	73.15	89	71.65	164	16	2-	↑	-4
PRODUCING	↑	37	↑	40.15	56	38.65	98	8	2-	↑	-3
PRODUCING	↑	20	↑	23.15	39	21.65	64	4	2-	↑	-2
PRODUCING	△	6	2.3	9.15	25	7.65	36	1	2-1612163-	↑	-1
PRODUCING	↑	70	↑	73.15	89	71.65	164	16	1-	↑	-4
PRODUCING	↑	37	↑	40.15	56	38.65	98	8	1-	↑	-3
PRODUCING	↑	20	↑	23.15	39	21.65	64	4	1-	↑	-2
PRODUCING	↑	6	3.1	9.15	25	7.65	36	1	1-1612163-	↑	-1
PRODUCING	↑	70	↑	73.15	89	71.65	164	16		↑	-4
PRODUCING	↑	37	↑	40.15	56	38.65	98	8		↑	-3
PRODUCING	↑	20	↑	23.15	39	21.65	64	4		↑	-2
PRODUCING	△	6	2.3	9.15	25	7.65	36	1	1612163-	↑	-1

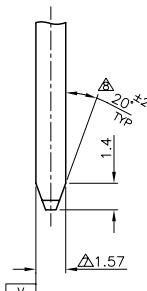
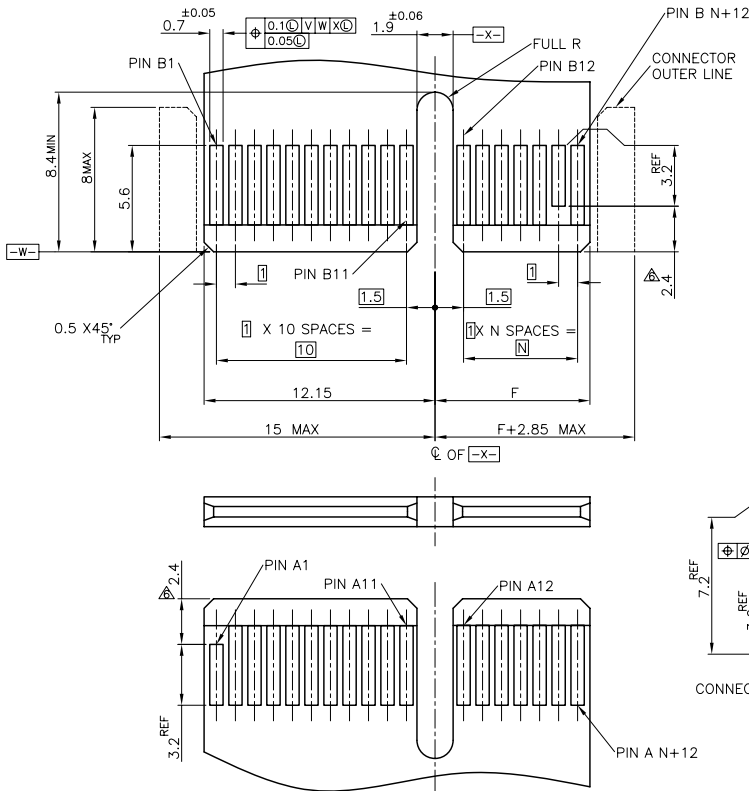
THIS DRAWING IS A CONTROLLED DOCUMENT.

DWG	K. KOBAYASHI	20FEB03	Tyco Electronics Corporation Taipei, Taiwan
CHK	H. SHIRAI	21FEB03	
APVD	Y. YAMAMOTO	21FEB03	
PRODUCT SPEC	108-5847		NAME
APPLICATION SPEC			PCI EXPRESS CARD EDGE CONN. V-TYPE
WEIGHT	A3	00779	SIZE
CUSTOMER DRAWING	SCALE 4:1		DRAWING NO
	SHEET 1 OF 2		RESTRICTED TO
	REV K		

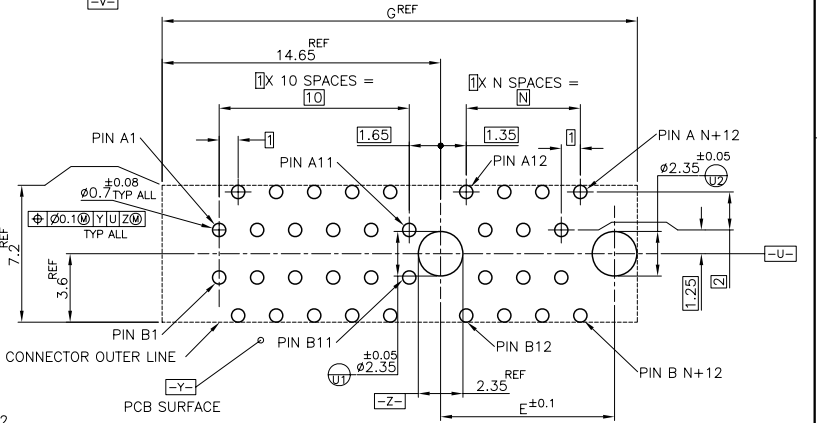
AMP 1470-19 REV 31MAR2000

THIS DRAWING IS UNPUBLISHED. RELEASED FOR PUBLICATION FEB. 2003.  
 © COPYRIGHT 2003 BY TYCO ELECTRONICS CORPORATION. ALL RIGHTS RESERVED.

LOC	DIST	REVISIONS			
P	LTR	DESCRIPTION	DATE	OWN	APPD
-	-	SEE SHEET 1	-	-	-



THIS DIMENSION IS ONLY APPLIED TO PRSNT PINS.  
 CARD THICKNESS APPLIES ACROSS TABS AND INCLUDES PLATING AND/OR METALIZATION.  
 CHAMFER EDGES MUST BE FREE OF CUTTING BURRS.  
 NO TIE BAR PERMITTED FROM CARD EDGE TO LEADING EDGE OF PAD FOR PRSNT PIN.  
 APPLICATION NOTE:  
 GOLD CONTACT PAD : ELECTROLESS GOLD PLATING 0.05μm MIN. OVER ELECTROLESS Ni PLATING 2μm MIN.



PCB PATTERN LAYOUT

MODULE LAYOUT(MATING PART ONLY)

	89	72.15	73.15	70	164	16
A1,B17,B31,B48,B81	89	72.15	73.15	70	164	16
A1,B17,B31,B48	56	39.15	40.15	37	98	8
A1,B17,B31	39	22.15	23.15	20	64	4
A1,B17	25	8.15	9.15	6	36	1
PRSNT PIN	G	F	E	N	POS.	PORT

THIS DRAWING IS A CONTROLLED DOCUMENT.

DIMENSIONS: MM	TOLERANCES UNLESS OTHERWISE SPECIFIED: ±0.13	DWN	Tyco Electronics Corporation Taipei, Taiwan
0-PLG ±	1-PLG ±	CHK	NAME
2-PLG ±	3-PLG ±	APVD	PCI EXPRESS CARD EDGE CONN. V-TYPE
4-PLG ±	ANGLES ±	PRODUCT SPEC	SIZE CAGE CODE DRAWING NO
MATERIAL	FINISH	APPLICATION SPEC	A3 00779 C-1612163
		WEIGHT	RESTRICTED TO
		CUSTOMER DRAWING	SCALE 5:1 SHEET 2 OF 2 REV K