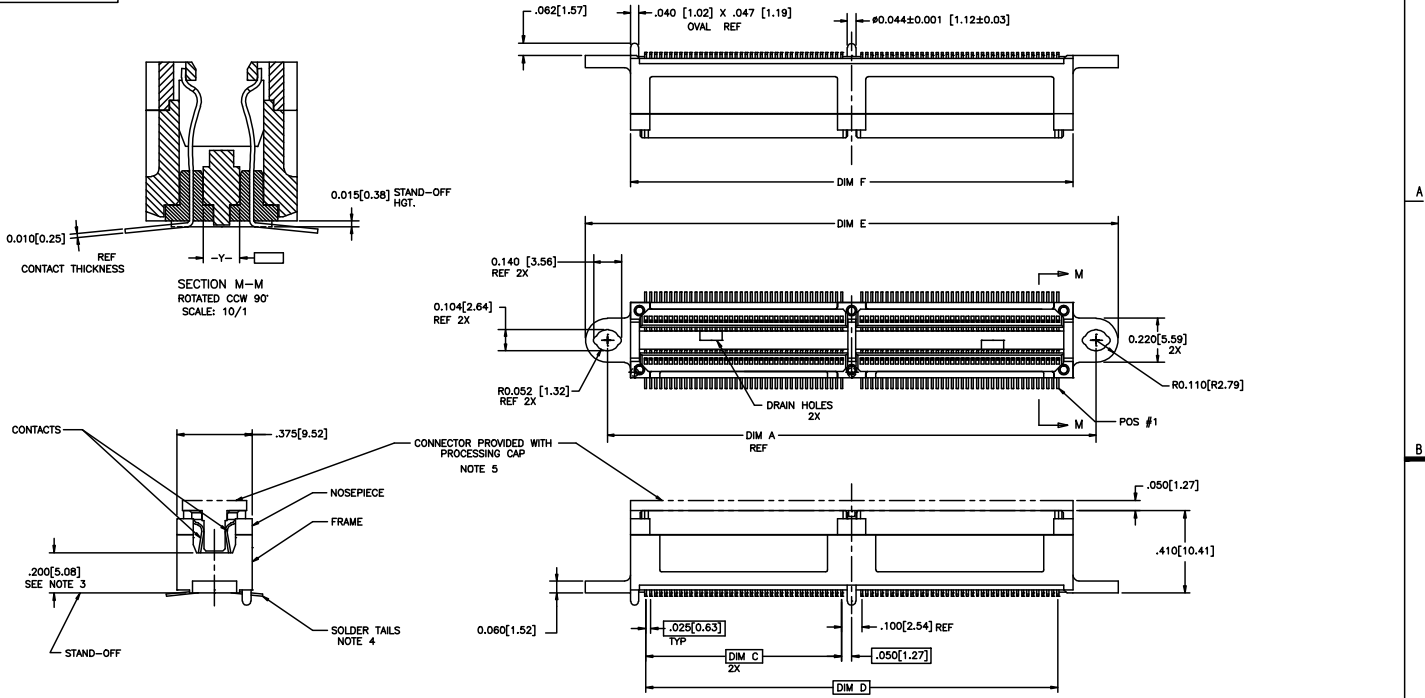
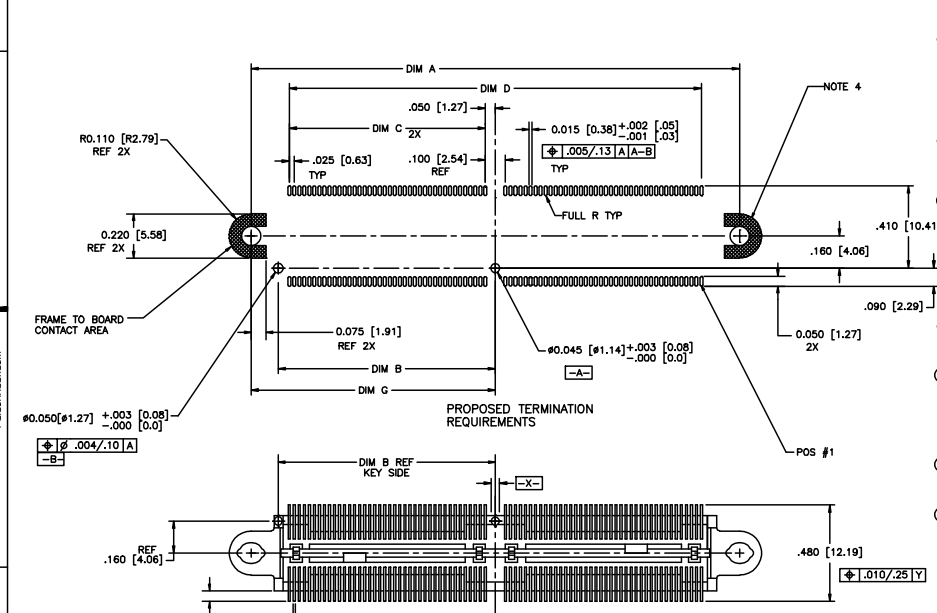


PRODUCT NUMBER
SEE TABLE



mat'l code	NOTE 1 & 2	surface	tolerance	projection	product family
ISO 1902	ISO 406	ISO 1501	INCH/MM	MICROPAX	
tolerance unless otherwise specified	linear	XXX.005/XXX.013	scale 1:1	title	
angles	0°±2'	XXX.000/XXX.006		.025M SURFACE MOUNT RECEPT., DOUBLE MODULE	
dr	date	eng	chr	dwg no	
H C70095 SAR 7/22/97		M. HERNANDEZ	11/17/04	91403	
J B81703 EPK 9/25/98		F. SALAS	11/17/04	sheet 1 of 2 size A3	
K V12473 MEM 10/10/01		F. SALAS	11/17/04	type Product Customer Drawing	
L V12850 MEM 11/02/01		F. SALAS	11/17/04		
M M04-0216 MHT 11/17/04					
N M06-0279 AEA 7/22/06					
P M08-0271 MHT 9/25/08					
revision	P	P			
sheet	1	2			
index					

PRODUCT NUMBER	NO. OF CONTACTS	DIM A	DIM B	DIM C	DIM D	DIM E	DIM F	DIM G	CONTACT PLATING NOTE 2
91403-001	120	1.930/49.02	.830/21.08	.725/18.42	1.550/39.37	2.150/54.61	1.700/43.18	.965/24.51	30 GXT
91403-001LF									
91403-002	160	2.430/61.72	1.080/27.43	.975/24.76	2.050/52.07	2.650/67.31	2.200/55.88	1.215/30.86	30 GXT
91403-002LF									
91403-003	200	2.930/74.42	1.330/33.78	1.225/31.12	2.550/64.77	3.150/80.01	2.700/68.58	1.465/37.21	30 GXT
91403-003LF									
91403-403	200	2.930/74.42	1.330/33.78	1.225/31.12	2.550/64.77	3.150/80.01	2.700/68.58	1.465/37.21	60 GXT
91403-403LF									



- NOTES:
- MATERIALS:
DIELECTRIC: LCP
CONTACTS: BeCu
FRAME: ZINC ALLOY #3
 - PLATING:
SOLDER TAILS:
TIN LEAD: 150u"/3.81um Sn Pb
LEAD FREE OPTION: 150u"/3.81um Sn
FRAME: 100u"/2.54um Ni
CONTACTS: 30u"/7.6um GXT OVER 50u"/1.27um Ni
OR 60u"/1.52um GXT OVER 75u"/1.90um Ni.
 - WHEN THE CONNECTOR IS MATED WITH THE OPPOSITE HALF, THE PARALLEL BD. TO BD. HGT. IS .47 ±.01. (APPLYS TO VERT. THRU & SURFACE MT. STYLES)
 - THE SOLDER TAILS ON THIS PRODUCT ARE DESIGNED TO BE COMPLIANT IN ORDER TO ACCOMMODATE PRINTED CIRCUIT BOARD DIMENSIONAL VARIATIONS. THEREFORE, HOLDDOWN HARDWARE IS REQUIRED TO SECURE THE CONNECTOR TO THE PRINTED CIRCUIT BOARD FOR MOST TYPES OF SOLDER REFLOW OPERATIONS. FOR FURTHER APPLICATION DATA, INCLUDING HOLE SIZES FOR VARIOUS TYPES OF HARDWARE, SEE TA-932.
 - DO NOT REMOVE PROCESSING CAP UNTIL SOLDERING IS COMPLETED. CAP WILL PREVENT POTENTIAL NOSE PIECE BOW DURING HIGH TEMP. SOLDERING PROCESS.
 - PART NUMBERS WITH LF IN THE END ARE LEAD FREE OPTION.
EXAMPLE: 91403-XXX LF
OPTIONAL LEAD FREE
 - THIS PRODUCT MEETS EUROPEAN UNION DIRECTIVES AND OTHER COUNTRY REGULATION AS DESCRIBED IN GS-22-008.
 - THE HOUSING WILL WITHSTAND EXPOSURE TO 260° PEAK TEMPERATURE FOR 20 SECONDS IN A CONVECTION, INFRA-RED OR VAPOR PHASE REFLOW OVEN.

mat'l code	surface	tolerance	projection	product family
NOTE 1 & 2	ISO 1902	ISO 406		MICROPAX
itr ecn no dr date	tolerance unless otherwise specified			title
P	angles	linear	INCH/MM	.025M SURFACE MOUNT RECEPT., DOUBLE MODULE
	0°±2'	XXX.005/XXX.013	scale 1:1	dwg no
	dr	M. HERNANDEZ 11/17/04		91403
	eng	F. SALAS 11/17/04		sheet 2 of 2 size
	chr	F. SALAS 11/17/04		A3
	appd	F. SALAS 11/17/04		type Product Customer Drawing
sheet index	revision sheet			